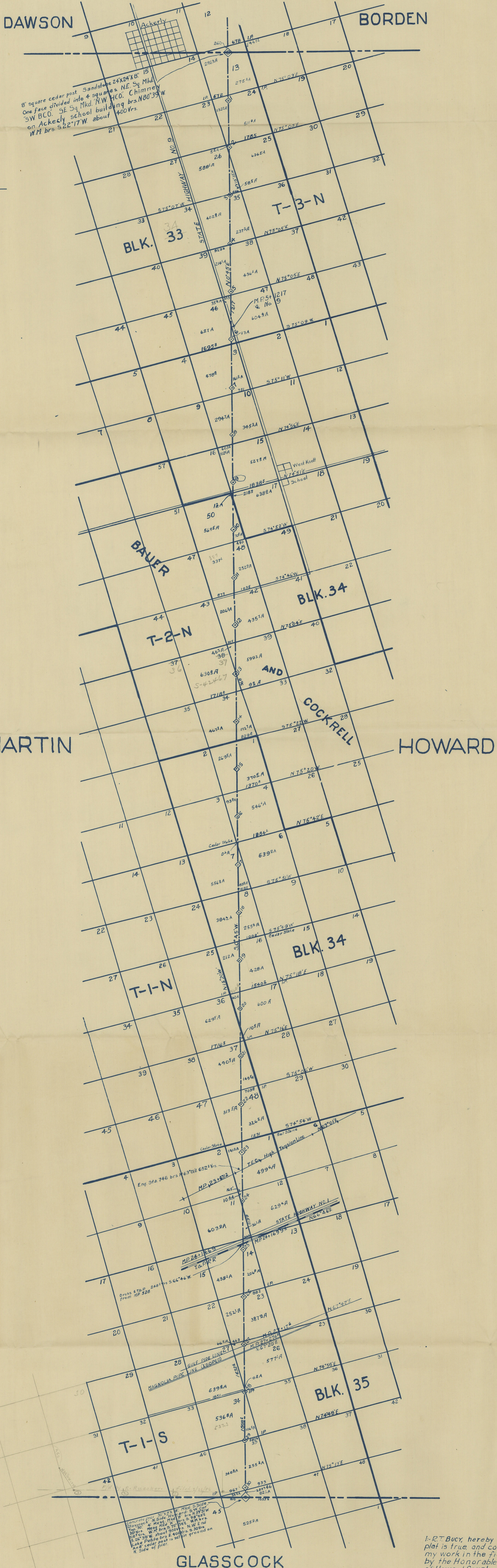


PLAT
of
WEST LINE HOWARD COUNTY
and
EAST LINE MARTIN COUNTY
TEXAS

Scale: 1" = 1500 Varas Surveyed, July & August 1928
All courses hereon refer to TRUE MERIDIAN



8' square cedar post Sandstone 24x24x8"
One face divided into 4 squares NE Sq Mkd
SW BCO. SE Sq Mkd. NW HCO. Chimney
on Ackerly school building brs. N80°39'W
WM brs S22°17'W about 400 Vrs.

MARTIN

HOWARD

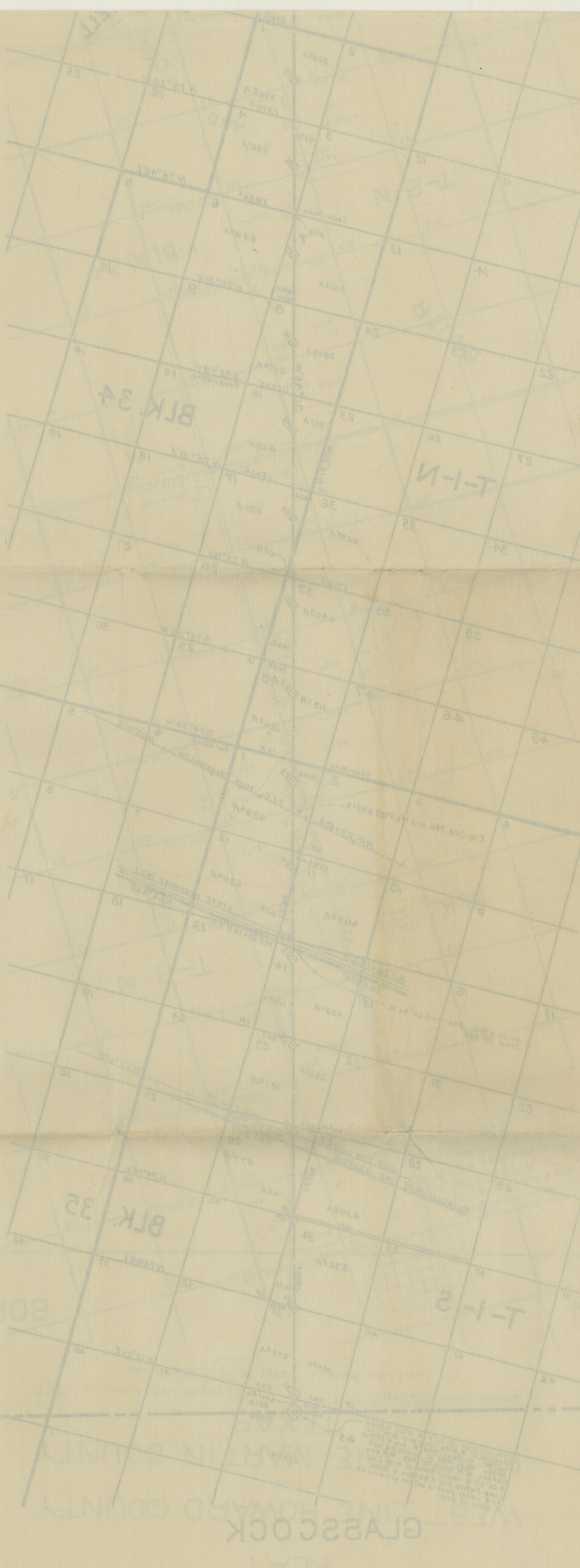
GLASSCOCK

I, R. T. Bucy, hereby certify that this plat is true and correctly represents my work in the field as ordered by the Honorable County Courts of Howard County and Martin County, Texas, Surveyed, July and August, 1928

R. T. Bucy
LICENSED LAND SURVEYOR OF TEXAS

HOWARD

MARTIN



Martin Co Bdry Line 26

Howard - Martin
County Line -

Plat -

Filed August 14, 1928

J. Robinson, Comm.
Clerk

56780

BORDEN

DAWSON

GLASSCOCK
PLAT
WEST THE HOWARD COUNTY
DE WALKIN COUNTY
TEXAS

1-27-28 hereby certify that this
plat is true and correct, represents
my work in the field as ordered
by the Honorable County Court
of Howard County and Martin
County Texas surveyed July and
August 1928.

1928
LICENSED LAND SURVEYOR IN TEXAS