

File No. 62  
undary Sines

W Martin Lea  
2

led Feby 26<sup>th</sup> 1886

Supplement July 12<sup>th</sup> /86

Abstract corrected and  
copy furnished the Comptroller  
of Pub Accts July 22/86

G. W. Beaumont

See Letter Book #191, P. 631

Separating the above County from  
Don Brun, Midland, Andrews  
and Dawson.

See letter to C. Judge  
J. M. Seavey 4/3/85  
" Letter Book  $\frac{5-85}{167}$

Receipt netig<sup>d</sup> March 3/86.

Haralson

1  
2  
3  
4  
5  
6  
7  
8  
9  
10  
11  
12  
13  
14  
15  
16  
17  
18  
19  
20  
21  
22  
23  
24  
25  
26  
26  
27  
28  
29  
30  
31  
32

*Field Notes*

*of the Boundary lines of Martin Co. Texas*

*Martin Co. Bdry Line 62*

Field Notes

of the Boundary lines of Martin County Texas surveyed by Robert Ruescher County Surveyor of Martin County Texas in the month of December 1885.

Beginning at a post mkd SWC HC also a piece of stone tile mkd the same and a Sand Md 4 feet high encircled by a ditch 10 feet in dia being the South West Corner of Howard County Texas also the South East Corner of Martin County Texas.

Thence West Variation  $12^{\circ}28'$  East 1900 Vis to a Cedar post Earth Md 42 Pits 1<sup>st</sup> mile

Thence West at 950 Vis strike Sand hill at 1710 Vis Cluster of Shin oak bears North  $47^{\circ}$  Vis 1900 Vis to Cedar post Sand Md 42 Pits 2<sup>nd</sup> mile

Thence West at 1425 Vis pass Sand hill 1900 Vis to Cedar post mkd III M Earth Md 42 Pits, a <sup>small (rolling)</sup> stake mkd <sup>Block 35 + Block 36</sup> B.35 & B.36 being 950 Vis  $S13^{\circ}E$  of South West Corner of Section N<sup>o</sup> 30 Thirty Township one South Block 35 thirty five bears  $N32^{\frac{1}{2}}W$  1029 Vis <sup>from the</sup> 3<sup>rd</sup> mile

Thence West 1900 Vis to Cedar post mkd IV M. Earth Md 42 Pits 4<sup>th</sup> mile

Thence West Variation  $12^{\circ}30'$  East 1900 Vis to Cedar post Earth Md 42 Pits 5<sup>th</sup> m

Thence West 1900 Vis to Cedar post Earth Md 42 Pits 6<sup>th</sup> mile

Thence West 1900 Vis to Cedar post

Earth Md & 2 Pits 7<sup>th</sup> mile

Thence West 1900 fms to Cedar post mkd

VIII Earth Md & 2 Pits 8<sup>th</sup> mile

Thence West 1900 fms to Cedar post

Earth Md & 2 Pits 9<sup>th</sup> mile

Thence West Variation 12°33' East at

950 fms East bank of Mustang drain 1900 fms to Hackberry post Earth Md & 2 Pits 10<sup>th</sup> m

Thence West at 475 fms West bank

of Mustang drain 1900 fms to Cedar post mkd

XI Earth Md & 2 Pits 11<sup>th</sup> mile

Thence West at 913 fms center of

Texas & Pacific Railroad track, a Telegraph post which is blazed and mkd MA is

1 Vara South of the line 1900 fms to Cedar

post mkd XII Earth mound & 2 Pits 12<sup>th</sup> m

Thence West 1900 fms to Cedar post

Earth Md & 2 Pits 13<sup>th</sup> mile

Thence West Variation 12°36' East

1900 fms to Cedar post Earth Md & 2 Pits 14<sup>th</sup> m

Thence West 1900 fms to Cedar post

mkd XV Earth Md & 2 Pits 15<sup>th</sup> mile

Thence West 1900 fms to Cedar

post Earth Md & 2 Pits 16<sup>th</sup> mile

Thence West 1900 fms to Cedar

post <sup>mkd XVI</sup> Earth Md & 2 Pits 17<sup>th</sup> mile

Thence West 1900 fms to Cedar post

Earth Md & 2 Pits 18<sup>th</sup> mile

Thence West 1900 fms to Cedar post

mkd XVII Earth Md & 2 Pits 19<sup>th</sup> mile

Thence West 1900 fms to Cedar post

mkd XVIII Earth Md & 2 Pits 20<sup>th</sup> mile

3

1 Thence West Variation  $12^{\circ}40'$  East 1900  
2 Vis to Cedar post Earth Md & 2 Pits 21<sup>st</sup> mile

3 Thence West 1900 Vis to Cedar post mkd  
4 XXII Earth Md & 2 Pits 22<sup>nd</sup> mile

5 Thence West 1900 Vis to Cedar post  
6 Earth Md & 2 Pits 23<sup>rd</sup> mile

7 Thence West 1900 Vis to Cedar post  
8 mkd XXIV Earth Md & 2 Pits 24<sup>th</sup> mile

9 Thence West 1900 Vis to Cedar post  
10 Earth Md & 2 Pits 25<sup>th</sup> mile

11 Thence West Variation  $12^{\circ}44'$  East  
12 at 1650 Vis. East bank of drain 1900 Vis to Ce-  
13 dar post mkd XXVI Earth Md & 2 Pits 26<sup>th</sup> m.

14 Thence West at 100 Vis West bank of  
15 drain 1900 Vis to Cedar post Earth Md &  
16 2 Pits being the 27<sup>th</sup> mile

17 Thence West 1900 Vis to Cedar post  
18 mkd XXVIII Earth Md & 2 Pits 28<sup>th</sup> mile

19 Thence West 1900 Vis to Cedar post  
20 mkd XXIX Earth Md & 2 Pits 29<sup>th</sup> mile

21 Thence West 1900 Vis to Cedar post  
22 mkd SWC MA & AC Rock Md & 4 Pits being  
23 the South West Corner of Martin County Tex  
24 also the South East Corner of Andrews  
25 County Texas, a stake mkd W 2 B 40 155 M  
26 CL. T & P. RR & Rock Md being the North West  
27 Corner of Section N<sup>o</sup> 2 Block N<sup>o</sup> 40 Township  
28 N<sup>o</sup> 1 South bears  $S 85^{\circ}35'E - 155$  Vis and a  
29 fence gate bears  $N 74^{\circ} E$  about  $4\frac{1}{5}$  Vis.

30 Thence North Variation  $12^{\circ}48'E$   
31 1900 Vis to Cedar post mkd I Earth Md  
32 & 2 Pits 1<sup>st</sup> mile

3

1 Thence North 1900 Vrs to Cedar post  
2 mkd II Earth Md & 2 Pits 2<sup>nd</sup> mile

3 Thence North 1900 Vrs to Cedar post  
4 Earth Md & 2 Pits 3<sup>rd</sup> mile

5 Thence North 1900 Vrs to Cedar post  
6 mkd IV Earth Md & 2 Pits 4<sup>th</sup> mile

7 Thence North 1900 Vrs to Cedar post  
8 mkd V Earth Md & 2 Pits 5<sup>th</sup> mile

9 Thence North 1900 Vrs to Cedar post  
10 mkd VI Earth Md & 2 Pits 6<sup>th</sup> mile

11 Thence North 1900 Vrs to Cedar post  
12 mkd VII Earth Md & 2 Pits 7<sup>th</sup> mile

13 Thence North at 1850 Vrs Sand hill  
14 1900 Vrs to Cedar post mkd VIII Sand Md & 2 Pits 8<sup>th</sup> m.

15 Thence North 1900 Vrs to Cedar post  
16 mkd IX Sand Md & 2 Pits 9<sup>th</sup> mile

17 Thence North 1900 Vrs to Cedar post  
18 mkd X Sand Md & 2 Pits 10<sup>th</sup> mile

19 Thence North Variation  $12^{\circ}48'$  East  
20 1900 Vrs to Cedar post mkd XI Sand Md  
21 & 2 Pits 11<sup>th</sup> mile

22 Thence North 1900 Vrs to Cedar post  
23 mkd XII Sand Md & 2 Pits 12<sup>th</sup> mile

24 Thence North at 950 Vrs pass Sand  
25 hill 1900 Vrs to Cedar post Mkd XIII Earth Md  
26 & 2 Pits 13<sup>th</sup> mile

27 Thence North 1900 Vrs to Cedar post  
28 mkd XIV Earth Md & 2 Pits 14<sup>th</sup> mile

29 Thence North 1900 Vrs to Cedar post  
30 mkd XV Earth Md & 2 Pits 15<sup>th</sup> mile

31 Thence North 1900 Vrs to Cedar post  
32 mkd XVI Earth Md & 2 Pits 16<sup>th</sup> mile

1 Thence North 1900 Vis to Cedar post mkd  
2 XVII Earth Md & 2 Pits 17<sup>th</sup> mile  
3 Thence North 1900 Vis to Cedar post  
4 mkd XVIII Earth Md & 2 Pits 18<sup>th</sup> mile  
5 Thence North 1900 Vis to Cedar post  
6 mkd XIX Earth Md & 2 Pits 19<sup>th</sup> mile  
7 Thence North 1900 Vis to Cedar post  
8 mkd XX Sand Md & 2 Pits 20<sup>th</sup> mile  
9 Thence North strike Sandhill  
10 1900 Vis to Cedar post mkd XXI Sand Md  
11 & 2 Pits 21<sup>st</sup> mile  
12 Thence North 1900 Vis to Cedar post  
13 mkd XXII Sand Md & 2 Pits 22<sup>nd</sup> mile  
14 Thence North 1900 Vis to Cedar post  
15 mkd XXIII Sand Md & 2 Pits 23<sup>rd</sup> mile  
16 Thence North 1900 Vis to Cedar post  
17 Sand Md & 2 Pits 24<sup>th</sup> mile  
18 Thence North at 500 Vis and 1000 Vis  
19 Mustang drain 1900 Vis to Cedar post  
20 mkd XXV Sand Md & 2 Pits 25<sup>th</sup> mile  
21 Thence North 1900 Vis to Cedar  
22 post mkd XXVI Sand Md & 2 Pits 26<sup>th</sup> mile  
23 Thence North 1900 Vis to Cedar post  
24 mkd XXVII Sand Md & 2 Pits 27<sup>th</sup> mile  
25 Thence North 1900 Vis to Cedar  
26 post mkd XXVIII Sand Md & 2 Pits 28<sup>th</sup> mile  
27 Thence North 1900 Vis to Cedar  
28 post mkd XXIX Sand Md & 2 Pits 29<sup>th</sup> mile  
29 Thence North 1900 Vis to Cedar post  
30 mkd NW MA large Sand Md & 4 Pits  
31 being the North West Corner of Mar-  
32 tin County Texas.

1 Thence East Variation  $12^{\circ}48'$  East  
2 1900 Vis to Cedar post Mkd I Sand Md  
3 of 2 Pits 1<sup>st</sup> mile

4 Thence East 1900 Vis to Cedar post  
5 mkd II Sand Md of 2 Pits 2<sup>nd</sup> mile

6 Thence East 1900 Vis to Cedar post  
7 mkd III Sand Md of 2 Pits 3<sup>rd</sup> mile

8 Thence East 1900 Vis to Cedar post  
9 mkd IV Sand Md of 2 Pits 4<sup>th</sup> mile

10 Thence East at 1425 Vis pass Sand  
11 hill strick hard & level Land 1900 Vis to  
12 Cedar post mkd V Earth Md of 2 Pits 5<sup>th</sup> m.

13 Thence East Variation  $12^{\circ}44'$  East  
14 1900 Vis to Cedar post mkd VI Earth Md  
15 of 2 Pits 6<sup>th</sup> mile

16 Thence East 1900 Vis to Cedar post  
17 mkd VII Earth Md of 2 Pits 7<sup>th</sup> mile

18 Thence East 1900 Vis to Cedar post  
19 mkd VIII Earth Md of 2 Pits 8<sup>th</sup> mile at  
20 top of a ridge on the East side of  
21 said level land.

22 Thence East 1900 Vis to Cedar post  
23 mkd IX Earth Md of 2 Pits 9<sup>th</sup> mile  
24 about 200 Vis South West of a little dry la-  
25 ke of 150 Vis width

26 Thence East 1900 Vis to Cedar post  
27 mkd X Earth Md of 2 Pits in the center of  
28 a basin of 475 Vis width 10<sup>th</sup> mile

29 Thence East 1900 Vis to Cedar post  
30 mkd XI Earth Md of 2 Pits 11<sup>th</sup> mile

31 Thence East Variation  $12^{\circ}39'$  East  
32 1900 Vis to Cedar post mkd XII Earth Md



1 of 2 Pits 12<sup>th</sup> mile

2 Thence East 1900 Yrs to Cedar post

3 mkd XIII Earth Md of 2 Pits 13<sup>th</sup> mile

4 Thence East 1900 Yrs to Cedar post

5 mkd XIV Earth Md of 2 Pits 14<sup>th</sup> mile

6 Thence East 1900 Yrs to Cedar post

7 mkd XV Earth Md of 2 Pits 15<sup>th</sup> mile

8 Thence East 1900 Yrs to Cedar post

9 mkd XVI Earth Md of 2 Pits 16<sup>th</sup> mile

10 Thence East 1900 Yrs to Cedar post

11 mkd XVII Earth Md of 2 Pits 17<sup>th</sup> mile

12 Thence East at 475 Yrs dry lake

13 of 150 Yrs width 1900 Yrs to Cedar post mkd

14 XVIII Earth Md of 2 Pits 18<sup>th</sup> mile

15 Thence East Variation 12° 35' East

16 1900 Yrs to Cedar post mkd XIX Earth Md

17 of 2 Pits 19<sup>th</sup> mile

18 Thence East 1900 Yrs to Cedar post

19 mkd XX Earth Md of 2 Pits 20<sup>th</sup> mile

20 Thence East at 95 Yrs wagon trail

21 of fence 1900 Yrs to Cedar post mkd XXI

22 Earth Md of 2 Pits at the lowest part of a

23 basin of 475 Yrs width 21<sup>st</sup> mile

24 Thence East 1900 Yrs to Cedar post

25 mkd XXII Earth Md of 2 Pits 22<sup>nd</sup> mile

26 Thence East 1900 Yrs to Cedar post

27 mkd XXIII Earth Md of 2 Pits 23<sup>rd</sup> mile

28 Thence East 1900 Yrs to Cedar post

29 mkd XXIV Earth Md of 2 Pits 24<sup>th</sup> mile

30 Thence East 1900 Yrs to Cedar post

31 mkd XXV Earth Md of 2 Pits 25<sup>th</sup> mile

32 Thence East Variation 12° 28' East

1 at 475 Vrs and 950 Vrs Sulphur Drain  
2 1900 Vrs to Cedar post mkd XXVI Earth  
3 Md of 2 Pits 26<sup>th</sup> mile

4 Thence East at 10 Vrs fence 1900  
5 Vrs to Cedar post mkd XXVII Earth Md  
6 of 2 Pits 27<sup>th</sup> mile

7 Thence East 1900 Vrs to Cedar post  
8 mkd XXVIII Earth Md of 2 Pits 28<sup>th</sup> mile

9 Thence East 1900 Vrs to post mkd  
10 XXIX Earth Md of 2 Pits 29<sup>th</sup> mile

X  
East line  
↓

11 Thence East 1900 Vrs to Mesquite  
12 post 8 in dia mkd N.E.C. MC of large  
13 Earth md encircled by ditch 10 feet dia  
14 being the North East Corner of Mar-  
15 tin County Texas and North West Corner  
16 of Howard County Texas, the same is  
17 same is about 100 Vrs North East of a dry  
18 lake of 100 Vrs width.

19 Thence South Variation  $12^{\circ}24'$  East  
20 1900 Vrs to post Mkd I. M Earth Md of 2 Pits 1<sup>st</sup> m.

21 Thence South 1900 Vrs to Mesquite  
22 post mkd II. M Earth Md of 2 Pits 2<sup>nd</sup> mile

23 Thence South 1900 Vrs to Mesquite  
24 post mkd III. M Earth Md of 2 Pits 3<sup>rd</sup> mile

25 Thence South 1900 Vrs to Mesquite  
26 post mkd IV. M Earth Md of 2 Pits 4<sup>th</sup> mile

27 Thence South at 1425 Vrs wagon-  
28 trail 1900 Vrs post mkd V. M Earth Md of 2  
29 Pits 5<sup>th</sup> mile

30 Thence South 1900 Vrs to Mesquite  
31 post mkd VI. M Earth Md of 2 Pits 6<sup>th</sup> mile

32 Thence South at 1567 Vrs fence

6

1 1900 Vis to Mesquite post mkd VII Earth  
2 Md & 2 Pits 7<sup>th</sup> mile

3 Thence South 1900 Vis to post mkd  
4 VIII Earth Md & 2 Pits 8<sup>th</sup> mile

5 Thence South 1900 Vis through rol-  
6 ling land to post mkd IX Earth Md & 2 Pits 9<sup>th</sup> m.

7 Thence South Variation  $12^{\circ}25'$  East  
8 1900 Vis to post mkd X Earth Md & 2 Pits 10<sup>th</sup> mile

9 Thence South 1900 Vis to post mkd  
10 XI Earth Md & 2 Pits 11<sup>th</sup> mile

11 Thence South at 1092 Vis Sand  
12 hill 1900 Vis to Mesquite post mkd XII  
13 Sand Md & 2 Pits 12<sup>th</sup> mile

14 Thence South 1900 Vis to Mesquite  
15 post mkd XIII Sand Md & 2 Pits 13<sup>th</sup> mile

16 Thence South 1900 Vis to post  
17 mkd XIV Sand Md & 2 Pits 14<sup>th</sup> mile

18 Thence South pass Sand hill and  
19 strike hard land at 1377 Vis North bank  
20 of dry alkali lake 1900 Vis to post in  
21 the center of lake Earth Md 15<sup>th</sup> mile

22 Thence South at 285 Vis South  
23 bank of said lake 1900 Vis post mkd  
24 XVI Earth Md & 2 Pits on the west side  
25 of a little hill 16<sup>th</sup> mile

26 Thence South 1900 Vis to Mesquite  
27 post mkd XVII Earth Md & 2 Pits 17<sup>th</sup> mile

28 Thence South Variation  $12^{\circ}26'$  E.  
29 at 475 Vis and 975 Vis Sulphur Spring drain  
30 1900 Vis to post mkd XVIII Earth Md & 2 Pits 18<sup>th</sup> m.

31 Thence South 1900 Vis to Cor post mkd  
32 XIX Earth Md & 2 Pits on head of drain course

1 East 19<sup>th</sup> mile  
2 Thence South 1900 Vis to post mkd  
3 XIX Earth Md & 2 Pits 20<sup>th</sup> mile  
4 Thence South 1900 Vis to post mkd  
5 XXI Earth Md & 2 Pits 21<sup>st</sup> mile  
6 Thence South 1900 Vis to post mkd  
7 XXII Earth Md & 2 Pits 22<sup>nd</sup> mile  
8 Thence South Variation 12<sup>o</sup> 27' East  
9 <sup>1900 Vis</sup> to Cedar post mkd XXIII Earth Md & 2 Pits 23<sup>m</sup>  
10 Thence South at 617 Vis Big Springs  
11 road 1900 Vis to Cedar post mkd XXIV Earth  
12 Md & 2 Pits 24<sup>th</sup> mile  
13 Thence South 1900 Vis to Cedar  
14 post mkd XXV Earth Md & 2 Pits 25<sup>th</sup> m.  
15 Thence South at 411 Vis center  
16 of Texas & Pacific Rail Road track, Vis  
17 mkd M. & H. Telegraph post West of line  
18 blazed 1900 Vis to post mkd XXVI Earth  
19 Md & 2 Pits 26<sup>th</sup> mile  
20 Thence South 1900 Vis to Cedar  
21 post mkd XXVII Earth Md & 2 Pits 27<sup>th</sup> m.  
22 Thence South 1900 Vis to Cedar  
23 post mkd XXVIII Earth Md & 2 Pits 28<sup>th</sup> m.  
24 Thence South 1900 Vis to Cedar  
25 post Earth Md & 2 Pits 29<sup>th</sup> mile  
26 Thence South 1900 Vis to a post  
27 mkd SWC HC also a piece of stone tile  
28 marked the same and a Sand Md  
29 4 feet high encircled by a ditch 10 feet  
30 in dia being the South West Corner  
31 of Howard County Texas also the South  
32 East Corner of Martin County Texas

1 The place of beginning. Difference  
2 between starting point and end point about 120 Vis.  
3 Surveyed in the month of December 1885

4  
5 J. M. Warren

} Chain Carriers

6 W. D. Warren

7 I Robert Ruecker County Surveyor of  
8 Martin County Texas do hereby certify that  
9 the foregoing Survey was made accor-  
10 ding to law and that the limits, boun-  
11 daries and corners with the marks,  
12 natural and artificial are truly  
13 described in the foregoing Plat and  
14 Field Notes.

15 Given under my hand in town of  
16 Marienfeld Martin County Texas this  
17 the 23<sup>rd</sup> day of January 1886.

18  
19 Robert Ruecker  
20 County Surveyor of  
21 Martin County Texas.

22  
23 Filed for Record July 15<sup>th</sup> 1886 at 4  
24 O'clock P.M.

25 Recorded July 20<sup>th</sup> 1886 at 5 P.M.

26 in Miscellaneous Record No One (1)  
27 Pages 20 to 29 Records of Martin Co  
28 Texas

29 Daily Lester

30 C.C.C.  
31 Martin Co L

1 State of Texas }  
2 County of Martin }

3 I, Daily Lester  
4 Co Clerk in and for Martin County  
5 do hereby certify that the above and  
6 foregoing is a true and correct copy  
7 of the field notes of the Boundary  
8 lines of Martin County Texas,  
9 now of record in Book One (1) Pages  
10 20 to 29 Miscellaneous Record of  
11 Martin County Texas,

12 Given under  
13 my hand and seal of Office on  
14 this 24<sup>th</sup> day of February A.D. 1886

15 Daily Lester  
16 Co Clerk  
17 Martin Co Tx  
18  
19  
20  
21  
22  
23  
24  
25  
26  
27  
28  
29  
30  
31  
32

62

Received and filed  
July 26<sup>th</sup> 1886

Chf Draftsman,  
Martin County  
Boundary Line 62

July 26/86  
7 Weeks  
paper  
to  
Bureau

Letter Book 191  
631 7/22/86

1 2 3 4 5 6 7 8 9 10 11 12 13 14 15 16 17 18 19 20 21 22 23 24 25 26 27 28 29 30 31 32

MARTIN COUNTY

ANDREWS COUNTY



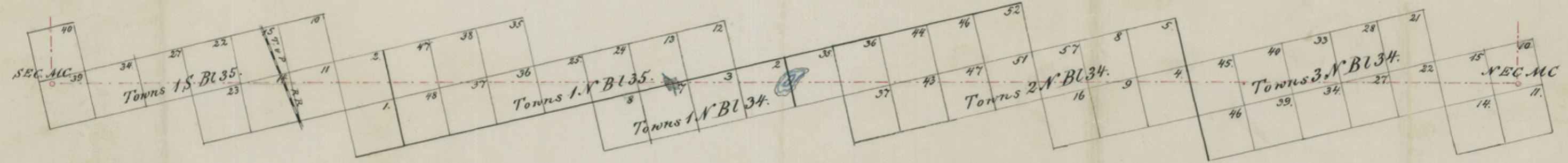
County 56797

WORTH CO. GA. 1860



Martin Co Bdry Line 82

# MARTIN COUNTY



# HOWARD COUNTY

52026

7  
Martin Co. Blk. 25

585 155 411

North.

Centerline Texas & Pacific R.R.

# MARTIN COUNTY



# MIDLAND COUNTY

Martin Co. map line 25

7

North.

DAWSON COUNTY

MARTIN COUNTY

