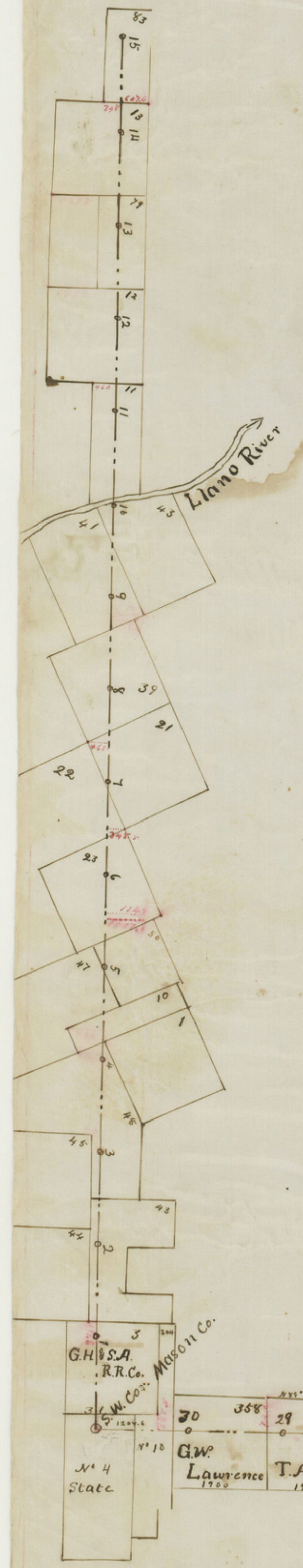


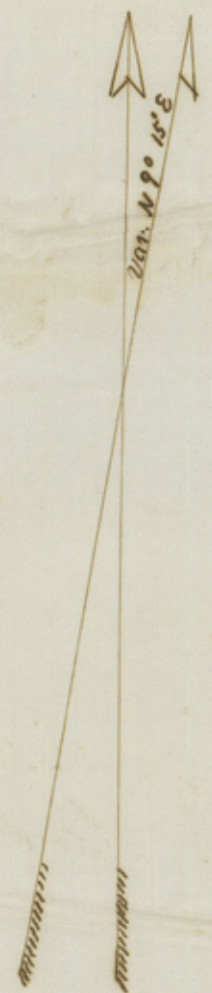
We the undersigned surveyors do hereby certify that the foregoing sketch represents the true location of South and West lines of Mason County and surveys crossed by lines - according to connections between lines and corners identified - red indicates connections between mile monuments and land corners - - - - -

W. T. Hope, County Surveyor
 Kumble Co.
 J. D. Hurley
 County Surveyor Mason Co.

Scale 200 varas to inch



X



Scale 200000000 to the inch

We the undersigned Surveyors do hereby certify that the foregoing sketch represents the true location of the South and West lines of Mason County and Surveys crossed by said lines according to connections made with identified Corners. Red figures indicate distance from the County line to identified land Corners.

o Indicate mile monuments.
 This 25th day of June AD 1895

J. D. Hurley
 County Surveyor Mason Co.
 W. J. Hope
 County Surveyor Kinble County

