



General Land Office.

State of Texas.

Austin.

J. T. ROBISON, COMMISSIONER.
~~W. A. WALKER, CHIEF CLERK.~~
J. M. MELSON, CHIEF CLERK.

June 29, 1914.

Mr. John D. Freeman,
McGregor, Texas.
Dear Sir:-

Replying to yours of the 25th instant, beg to say I have mailed copies of every document that may give you a clue by which the old county line between Coryell and McLennan Counties could be identified and retraced in remaking the old line, please give connection to as many of the survey corners through which the line passes, from which I can give the correct acreage of each survey affected on the State Abstract, the enclosed blue print plat is from a sketch accompanying the field notes of boundary line surveyed July 18, 1879, Ded Hammack and filed in this office October 15, 1879. In conclusion I would refer you to Revised Civil Statutes, 1911, Art. 1400, page 332, The county boundaries of the counties of this State, as now recognized and established, are adopted as the true boundaries of such county and the acts creating such counties and defining the boundaries are continued in force. See also 155, S. W. p. 1006, Stephens County, vs. Palo Pinto County.

Yours truly,

E von R/LSN

Commissioner.

Received Dec 14, 1914

REPORT OF SURVEYORS, MCLENNAN & CORYELL COUNTY LINE SURVEY:-

TO THE HONORABLE COUNTY COURTS OF MCLENNAN AND CORYELL COUNTIES
TEXAS:

In obedience to an order of The Honorable County Court of McLennan County, Texas, made on the 11th day of April A. D. 1914, ordering John D. Freeman to survey, in connection with a surveyor to be appointed by Coryell County the County line between McLennan and Coryell Counties and in obedience to an order of the County Court of Coryell County, Texas, made and entered at the June Term of said Court ordering R. T. Wilson to Survey in connection with John D. Freeman the line between McLennan and Coryell Counties, we R. T. Wilson and John D. Freeman began at the N. E. corner of Bell County as established by compromise between said County of Bell and McLennan, which is 307 varas S. 19 W. and 83 1/2 S. 71 E. from the N. W. corner of the Miles J. West Survey and one mile 1310 varas N. 60 E. from an Elm Stump near the Fauntly Johnson Ranch house, at which corner we drove an iron pipe 4 feet long into the ground so as to leave 2 inches above the surface; Thence we ran the line of transit, regardless of the needle, N. 30 W. at 1432.9 vs crossed South line of the -R. T. Davidson 1920 acres survey 639.3 varas S. 71 E. from its S. W. corner at 1440 varas set county line post, at one mile earth mound, at two miles earth mound: at 2 miles 634.5 varas crossed East line of the Wm. H. Payne Survey 396.5 varas from its S. E. corner; at three miles earth mound in the Payne Survey; at 3 miles 1173.1 varas crossed North line of said Payne Survey 109.2 varas from its N. W. corner: at 3 miles 1382.4vs County line post; at 3 miles 1429 varas pass 4 varas West of W. L. Haynes house; four miles earth mound in Mrs. M. E. Harris' field: on the V. L. Evans Survey: five miles 164.2 varas cross north line of V. L. Evans and South line of the Jesse Russell Survey: and 144.7 varas from said V. L. Evans N. W. corner: at 5 miles 222 1/2 varas was 10 1/2 feet west of the Jeff McClain house: at 5 miles 358.6 crossed West line of the Jesse Russell and East line of the S. Banks, having placed a county line post on the East side of Public road along this line. At six miles earth mound in the Banks Survey: at 6 miles 1429.6 varas passed 46.4 varas N. 19 E. from the B. Hartgraves N. E. corner: seven miles Earth mound: at 7 miles 741.9 varas passed 3 inches east of the

McLennan Co Bdry Line 5

N. E. corner of M. V. Dalton's house: at 7 miles 1071 varas crossed M. V. Dalton's west line and Tom Elms East line 432.7 varas N. 19 E. from N. E. corner of the Wyatt Hall pre-emption survey: Eight miles earth mound in the Banks Survey: 8 miles 214 varas County line post on South line of the St. Louis Southwestern R. R.; at 8 miles 1087 1/2 varas crossed line common to the Banks and Wm. Nye 896 varas. N. 60 E. from the S. W. corner of the Wm. Nye: at nine miles earth mound; at 9 miles 385 varas crossed North line of the Nye and South line of the John Lindall; at 9 miles 390 varas County line post on North line of Public road: 1532 varas N. 60 E. from S. W. corner of said Lindall; ten miles earth mound; at 10 miles 507 varas crossed East line of the Ramsdale and West line of the Lindall 1497.4 varas S. 19 W. from N. E. corner of the F. Ramsdale Survey: Eleven miles earth mound in the Ramsdale; at 11 miles 888 varas crossed North line of the Ramsdale 126 varas N. 71 W. from J. R. Nelson's S. E. corner: set county line post on North side of Public road along this line: Twelve miles earth mound in the Nelson: 12 miles 94.7 South Gabel of Davis' granary on the Nelson (Old W. J. G. McIlhaney place) at 12 miles 500 varas crossed West line of Nelson & East line of I. Franks 476.2 varas S. 19 W. from Nelson N. W. corner: at 12 miles 1226 varas crossed line common to Alderson and I. Franks Surveys: at 12 miles 1240.6 varas County line post on North side of Public road; at 12 miles 1496.8 varas crossed N. W. line of the H. Alderson and South line of the Samuel Evitts: Thirteen miles earth mound; at 13 miles 1444 varas crossed South line of the A. S. Roberts 1834 varas S. 60 W. from its S. E. corner: fourteen miles earth mound in Roberts; at 14 miles 598.7 varas county line post on South side of Crawford and Gatesville Public road; fifteen miles earth mound; sixteen miles earth mound; at 16 miles 404.6 passed 8 inches to the left of a forked Bois De Arc 6 inches in diameter at present marked 3 chops on North Fork; at 16 miles 516.4 varas crossed South line of the W. G. Lewis Survey 93 varas from the S. W. corner of same, 16 miles 583.6 a large rock mound from which the Hither End of Bois de Arc hedge bears North Sixty Five degrees and seven minutes East 16 miles 617 varas County line post on South line of Crawford and Osage Public road: from which the S. E. corner of the James Sidney Survey brs. S. 60 W. 93 varas; 16 miles 864 vs brick chimney of J. D. Bland's residence bears N. 60 E. 52.5 Varas: at 16 miles 1146 varas channel of Bluff Creek; at Seventeen miles earth

mound, at 17 miles 625.3 varas crossed fence recognized as North line of W. G. Lewis eighteen miles earth mound; at 18 miles 1100.5 crossed North line of the R. O. Glenn survey, having placed a county line post on South side of this Public road: Nineteen miles earth mound; at 19 miles 384 1/2 varas crossed South line of A. Flannery 32.8 varas from his S. W. corner; at 19 miles 954.7 varas crossed Rainey's creek; at 19 miles 1005 varas passed a large Bois De Arc tree marked 5 chops on each side; 10 miles 1474 varas crossed North line of Flannery and South line of the Jas. Blunt 32.3/4 varas N. 60 E. from Flunt S. W. corner: twenty miles earth mound; at 20 miles 452 varas Rock Mound on South side of Coryell and Valley Mills Public Road; and north line of Jas. Blunt survey 23.8 varas N. 60 E. from his N. W. corner: twenty-one miles earth mound; 21 miles 910 varas Rock mound on line common to McLennan and Bosque Counties from which their corner as made by them bears S. 60 W. 11.2 varas, marked by Square Cedar Post marked McL. N. W. C. on one side and S. B. Co. S. W. Surveyed between the dated of June 15th and August 12th A. D. 1914.

R. T. Wilson and John D. Freeman Chain Carriers.

We, R. T. Wilson and John D. Freeman specially appointed by the Counties of Coryell and McLennan, hereby certify that we made the above survey by actual measurement upon the ground, having run a transit line ignoring the magnetic needle, and that the lines and corners all marked both natural and artificial are truly described in the foregoing field notes and accompanying plat. We found it impossible to make our measurements agree exactly with calls of old surveys because of the sundry variations and excessive measurements used and practiced by the old surveyors in making said old Surveys.

August 14th 1914.

R. T. Wilson

THE STATE OF TEXAS,

County of McLennan.

I, J. W. BAKER, Clerk of the County Court and ex-officio Recorder of McLennan

15"

County, Texas, do hereby certify that the above and foregoing is a true and correct copy of a ~~certified~~ Report of Field notes of McLennan and Coryell ~~County~~ County Lines as Surveyed by John D. Freeman and R. T. Wilson Surveyors

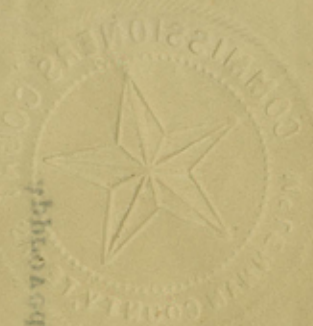
as the same appears of record in book L. pages 84 et seq. Civil Records of McLennan County.

IN TESTIMONY WHEREOF, and to certify which, I hereunto sign my name officially and affix the seal of said County Court, at my office in the City of Waco, this

12th day of December 1914

J. W. Baker
Clerk County Court and Ex-Officio Recorder, McLennan County, Texas.

By _____ Deputy



Approved and ordered of record Sept. 10, 1914.

McLennan County, Texas.

(Court Seal)

J. W. Baker, Clerk County Court,

day of August 1914.

Subscribed and sworn to by R. T. Wilson and John D. Freeman this 12th

John D. Freeman

R. T. Wilson

August 14th 1914.

practiced by the old surveyors in making said old surveys.

because of the sundry variations and excessive measurements used and
able to make our measurements agree exactly with calls of old surveys
the foregoing field notes and accompanying plat. We found it impos-
corners all marked both natural and artificial are truly described in
transit line ignoring the magnetic needle, and that the lines and
above survey by actual measurement upon the ground, having run a
Committee of Corryell and McLennan, hereby certify that we made the
we, R. T. Wilson and John D. Freeman specially appointed by the

58965

McLennan Co Cdry Line 5
Corryell and McLennan
boundary line.

Field notes

Filed Dec. 14, 1914

J. T. Robinson, Comm.

S. C. Clark, Clerk

R. T. Wilson and John D. Freeman Chain Carriers.
date of 13th and August 13th A. D. 1914.

R.C. 007-1941
N.S.

one side and S. E. Co. S. W. surveyed between the
60 W. 11.3 varas, marked by square Cedar Post marked
and Posadue Counties from which their corner as made by
31 miles 010 varas Rock mound on the common
33.8 varas N. 60 E. from his N. W. corner; twenty-
side of Corryell and Valley Mills Public Road; and north line
at 30 miles 453 varas Rock Mound
at 20 miles 33.3/4 varas N. 60 E. from Point S. W.

at 10 miles 1002 varas passed a large hole De vro tree marked 2 chops
from his S. W. corner; at 19 miles 054.7 varas crossed Rainey's creek;
19 miles 384 1/3 varas crossed south line of A. E. Fannery 32.8 varas
post on south side of this Public Road; Nineteen miles earth mound; at
north line of the R. O. Glenn survey, having placed a county line
of W. E. Lewis eighteen miles earth mound; at 18 miles 1100.2 crossed
mound, at 17 miles 035.2 varas crossed fence recognized as north line

Received Dec 18 1894

TO HON. GEORGE N. DENTON COUNTY JUDGE OF MCLENNAN COUNTY, TEXAS.

IN OBEDIENCE to the order of your Honor Mr. R. T. Wilson and I made a survey of the Line between McLennan and Coryell Counties and filed same with Hon. John W. Baker County Clerk of McLennan County. And I come now and ask to be allowed to report further:

In addition to the facts, fieldnotes, map and suggestion made in our joint report, I made a survey of the areas of the parts of the various surveys crossed by said line lying in McLennan County, which areas are as follows: Beginning at corner of Bell County:

- ✓ W. P. Johnston survey has 175 acres in McLennan County, balance in Bell & Coryell.
 - ✓ V. L. Evans (Lower Survey) 28.5 acres in McLennan County;
 - ✓ R. T. Davidson 1920 acre survey has 2011 acres in McLennan County.
 - ✓ R. T. Davidson 1/3 League survey has 676 acres in McLennan County.
 - ✓ Wm. H. Payne survey has 261 acres in McLennan County.
 - ✓ V. L. Evans (upper survey) has 939.3 acres in McLennan County.
 - ✓ All of the Jesse Russell except 5 acres is in McLennan County (4601 in McL)
 - ✓ S. Banks survey has 2427 acres in McLennan County.
 - ✓ Wm. Nye Survey has 782 acres in McLennan County.
 - ✓ John Lindall has 4221 acres in McLennan County.
 - ✓ Francis Ramsdale has 228 acres in McLennan County.
 - ✓ The J. R. Nelson survey has 229 acres in McLennan
 - ✓ The Isaac Franks survey has 23 acres in McLennan County.
 - ✓ The Henry Alderson Survey has 1806 acres in McLennan County.
 - ✓ The Samuel Ewitts survey has 66 acres in Coryell County, Balance 312 acres in McLennan.
 - ✓ All of the Jas. Walmsly survey except 24 acres is in McLennan County. In this survey there is an over run of 90 varas N° 30 W. 295 acres in McLennan Co.
 - ✓ Alexander S. Roberts survey has 1227 acres in McLennan County.
- All of the above calculations Mr. Wilson and I made jointly and agreed on same. That is to say we each made the calculations and compared and corrected same. From this point northward to N. W. corner of McLennan County Coryell County agreed to recognize the present rendition as they now are. Leaving all of the Wm. G. Lewis, T. B.

McLennan Co Baldry Line 5

White, J. R. Carter, R. S. Glenn, A. Flannery, & Joseph H. Blunt Surveys in McLennan County. There are 33 acres of the Wm. G. Lewis in Coryell County. 6 acres of the T. B. White, 12 acres of the J. R. Carter, 13.8 acres of the R. S. Glenn, 7.8 acres of the A. Flannaery and 3.4 acres of the Jos. H. Blunt surveys in Coryell County all of which has always been rendered to McLennan County. The M. Johnson survey has 79 acres in McLennan County, and the Thos. J. Goodman survey has 209 acres in McLennan County. You will note that same of the surveys are largely in excess of the amount supposed to be in them and you will note that we found the Jas. Walmsley 90 varas over its calls. In obedience to the order of Judge McCullough some years ago I ran part of the County line relying upon the Statement of Old and reliable citizens for the location of the line, and I started at the Old Jackson House in the N. E. corner of the B. Hartgraves survey, which line was run before the N. E. corner of Bell County was established by agreement and this Established corner is 95 1/2 varas East of the above point, which makes the differences of the areas of surveys now and when I ran the line formerly.

The line Mr. Wilson and I ran was run by transit regardless of the magnetic needle and is straight and I am confident is as nearly correct as can be run with the present starting point in connection with the many different variations at which the old surveys were run.

I submit herewith the several instruments furnished me by the General Land office and suggest that such as are not now of record in McLennan County be recorded and then sent to Coryell County for record there.

For this service (that is this supplemental report calculations of areas &c and the map filed with joint report) Coryell County paid Mr. Wilson \$35.00 which I think a very small fee for the service. I think the Court should allow me a like sum of \$35.00 because there was more work done by me than by Mr. Wilson viz: The calculation of the 8 surveys last named above.

Most Respectfully,

John D. Freeman

John D. Freeman

TO THE HONORABLE COUNTY JUDGE, GEORGE N. DENTON.

In addition to supplemental report filed with County Clerk Sept. 14th 1914, I beg to say I have added to the map the plats of all private lands cut by the County line with the name of the owners and the No. of acres each party owns in McLennan County on that particular Survey. Beginning at the N. E. corner of Bell County.

Abst. The M. J. West Survey has 234 1/2 acres in McLennan County
1194

J. B. Anderson 234 1/2 acres

V. L. Evans Lower Survey 28 1/2 acres owned by J. N. Alexander
(Jno. McGregor)

493 W. P. Johnson survey 175 acres in McLennan County.

J. B. Anderson 113 1/2 acres

J. N. Alexander 58 "

D. E. Anderson 3 1/2 "

Abst. R. T. Davidson 1920 acres survey has 2011 acres in
No. 311 McLennan.

Joe Cavitt 69.5 acres

C. D. Wright 100 "

W. J. Taylor 60 "

" " " 20 "

" " " 50 "

" " " 134 "

" " " 125 "

H. L. Marshall 200 "

Chas. Howard 100 "

H. N. Porterfield 96 6/10 Acres

W. S. Meador 50 "

Mary E. Meador 116 "

F.M. Porterfield 200 "

E. R. Kline 80 "

J. N. Alexander 200 "

Mrs. Mary Cummings 114 "

Mrs. John K. McGhee 147 "

J. B. McKinney 149 "

Abstract
No. 288

R. T. Davidson 1/3 League Survey 676 acres in McLennan County

Joe Cavitt 5 acres

H. N. Porterfield 111 "

Mrs. Maud Harris	103	"
C. N. Chapin	97 1/2"	
Mrs. Mary E. Meador	151.6	"
W. S. Meador	49 1/2 "	
J. T. Reed	122	"
	37.4	" Lies just North of Joe Cavitt.

Abst.717

Wm. H. Payne survey	
Mrs. C. H. Calvert	91 acres
" I. E. Neff	30 "
B. E. Neff	121 "
J. T. Reed	19 "

Abst. 323

V. L. Evans survey	939.3 acres in McLennan County.
R. A. Reece	112.1/3
H. C. Bowlin	56 1/6
J. T. Hamilton	112 1/3
W. L. Haynes	153 1/6
Mrs. M. E. Harris	408
T. A. Wells	97

Abst. 85 S. Banks Survey 2427 acres in McLennan County, the following are
Close to County Line.

Mrs. M. B. Moony	6 1/2 acres
C. D. Moony	52
M. V. Dalton	90
I. M. Isbill estate	29
J. T. Davis	678
P. E. Jones	27.6
R. M. Elms	40
Chas. F. Smith	56
E. J. Thomason	44 and others but these are close to the line, all of which I measured.

Abstract Wm. Nye Survey 782 acres in McLennan County.

664

W. J. Collins	190 acres
W. C. Cox	90
E. J. Thomason	70
Chas. F. Smith	258 "
Cunningham & Mogle	100
O.F. Jones	74

Abstr.530 John Lindall Survey 4221 acres in McLennan County.
 Bob Cox Acres and other tracts.(This is Home Tract)
 L. A. Wood and M. A. Jones

Abst. NO F. Ramsdale Survey 228 acres in McLennan County.
 1067 W. M. Moore 150 acres
 H. D. Edwards 47.3
 M. A. Jones 16.7
 Mrs.M.L.Bowers 14

Abst. 1064 J.R. Nelson Survey 229 acres in McLennan County.
 A. P. Davis 130 acres
 B. A. Davis (Mrs) 99 "

Abst. Isaac Franks Survey has 23 acres in McLennan County.
 1060 Mrs. M. J. Beaty 23 acres

Abstr. Samuel J. Evitts survey 312 acres in McLennan County.
 326 I. M. Dowis 40 acres
 W. B. Nunnelly 69 "
 R. J. Hall 203 "

Abstr. 913 James Walmsley Survey 295 acres in McLennan County.
 C. J. Edwards 65 acres
 " " " 50
 J. J. Jordan 39 2/3 "
 W. B. Nunnelly 8 1/2 "
 I. M. Dowis 37 "
 Sam L. Allen 95 "

Abst. 755 Alexander S. Roberts Survey 1227 acres in McLennan County.
 Paul Manske 128 acres
 R. L. Hickerson 170 "
 C. J. Edwards 100 "
 J.L. " 114 "
 J. J. Jordan 5 1/2 "
 J. C. Barnett 110 "
 J. H. Hockfeld 180 "
 Sam L. Allen 100 "

Abst. 755 Alexander S. Roberts survey continued

Sam L. Allen	83 1/2 acres
R. E. Edwards	120 "
J. M. Edwards	55 "
H. D. Edwards	40 "
J. M. Crain	20 " (1227)

From The Wm. G. Lewis Northward Coryell County agreed to accept present rendition which follows the survey lines to the Goodman survey.

Abstract No. Thos. J. Goodman 209 acres in McLennan County.

Mrs. Ludia Weber 161 acres

Mrs. Joe Schandler 38 "

All the tracts near the County line and many others were actually measured upon the ground, especially, The V. L. Evans, Upper survey, The Western part of the S. Banks, The entire Wm. Nye; The Western part of the John Lindall and the Eastern portion of the A. S. Roberts.

Most respectfully submitted and I hereby certify that same is correct.

John D. Freeman.

THE STATE OF TEXAS,

County of McLennan.

I, J. W. BAKER, Clerk of the County Court and ex-officio Recorder of McLennan

County, Texas, do hereby certify that the above and foregoing is a true and correct copy of ~~the~~ supplemental Report of Field Notes of McLennan ~~and~~ & Coryell County Lines as Surveyed by John D. Freeman ~~and~~ and R. T. Wilson Surveyors

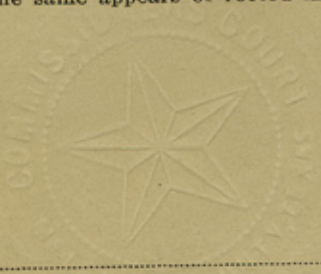
as the same appears of record in book L. pages 131^{et seq.} one of the Civil Records of McLennan County.

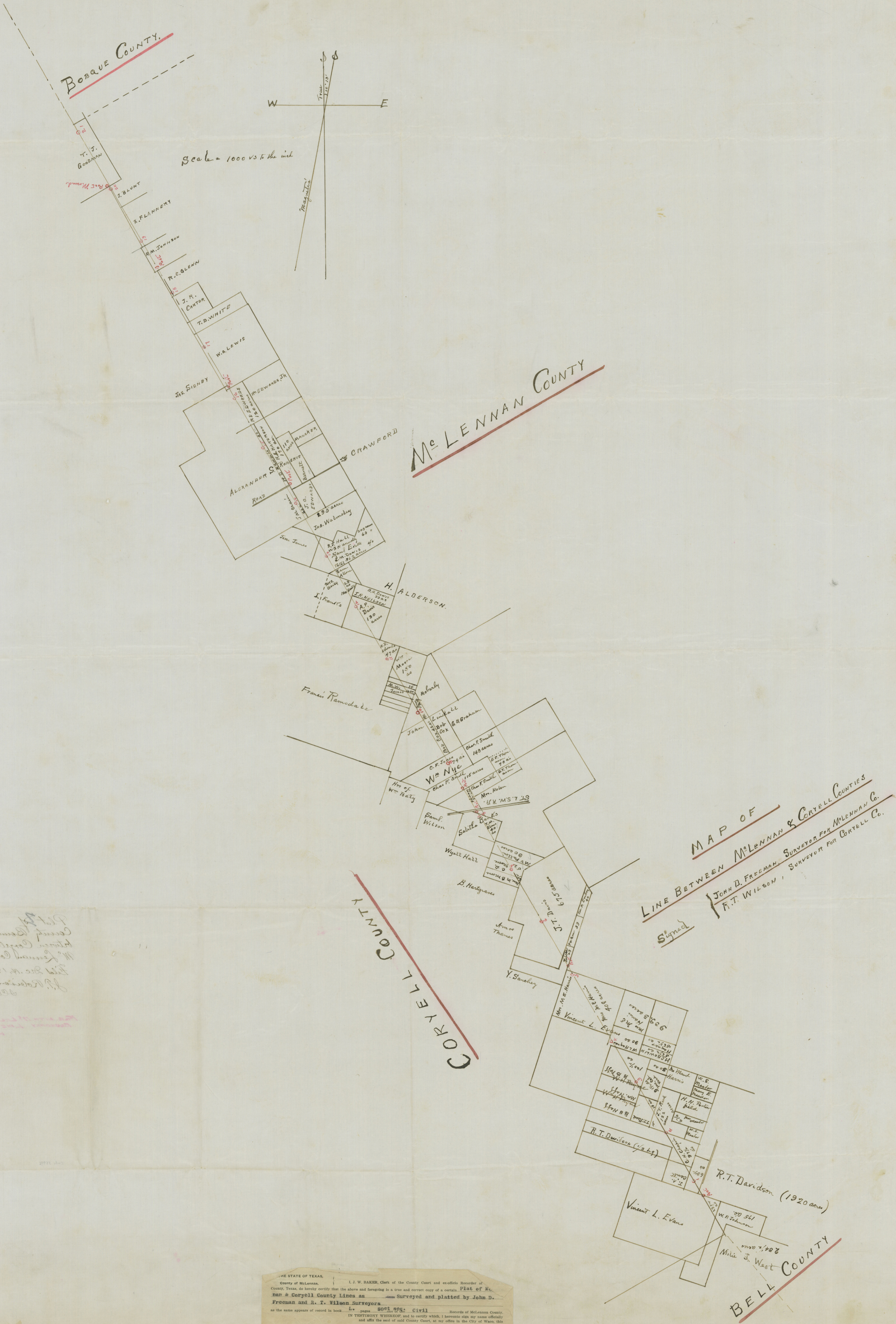
IN TESTIMONY WHEREOF, and to certify which, I hereunto sign my name officially and affix the seal of said County Court, at my office in the City of Waco, this

12th day of December 1914

J. W. Baker
Clerk County Court and Ex-Officio Recorder, McLennan County, Texas.

By _____ Deputy





Plat of
 County of McLennan
 between County of
 McLennan and
 County of Coryell
 filed Dec. 12, 1914
 R.T. Davidson
 Surveyor

THE STATE OF TEXAS,
 County of McLennan. I, J. W. BAKER, Clerk of the County Court and ex-officio Recorder of
 County, Texas, do hereby certify that the above and foregoing is a true and correct copy of a certain Plat of Mc-
 lennan & Coryell County Lines as Surveyed and platted by John D.
 Freeman and R. T. Wilson Surveyors
 as the same appears of record in book No. 288, page 278, Civil Records of McLennan County,
 in testimony whereof and to certify which, I have hereunto set my hand officially
 and affix the seal of said County Court, at my office in the City of Waco, this
 12th day of December, 1914.
 J. W. BAKER
 Clerk of County Court and Ex-officio Recorder, McLennan County, Texas.
 By _____ Deputy

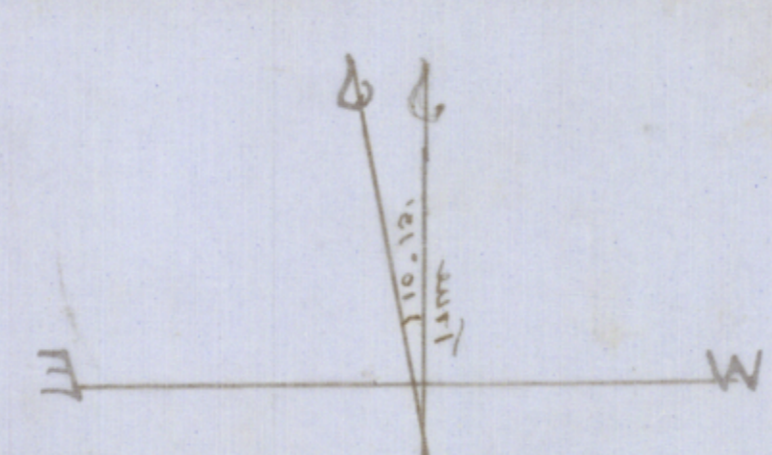
MAP OF
 LINE BETWEEN McLENNAN & CORYELL COUNTIES
 JOHN D. FREEMAN, Surveyor for McLennan Co.
 R.T. Wilson, Surveyor for Coryell Co.

BELL COUNTY

CORYELL COUNTY

McLENNAN COUNTY

BORQUE COUNTY



Scale - 1000 feet



Plot 24
 County Boundary
 between Coryell, Bell
 & McLennan Counties.
 Filed Dec. 14, 1914,
 J.P. Robinson Com.
 S.C. Clark Clk.

FOR A COPY OF RECORDS OF
 BOUNDARY LINES

