

On this the 15th day of Febry, 1889 the matter of establishing the line between McLennan County and Falls County coming on to be heard, and it appearing to the Court that Dr. A. Goddard, County Surveyor in accordance with an order heretofore passed by this Court did proceed to lay out and describe said line with metes and bounds which are more fully set forth in his report this day submitted to this Court, which report is as follows, towit:

OFFICE OF COUNTY SURVEYOR.

State of Texas ) To. the Hon Commissioners Court of  
County of McLennan ) McLennan Co., Texas.

In accordance with order of Aug. 15th, 1888 to survey and establish the boundary line between McLennan and Falls Counties West of the Brazos River, I beg leave to report that on the 3rd day of September 1888 I repaired to the place of beginning and remained until the 4th day of September at 11:30 o'clock A. M. when on account of the absence of the surveyor from Falls Co., R. S. Humicut, I returned to Waco, and by after appointment met on the 11th day of same Month, and proceeded with the above named surveyor to locate the point of beginning the N. E. corner of the L. B. Franks Lg., this being the beginning called for by both Counties, was after careful surveying, satisfactorily located, being at right distance 2500 varas from the South line which is marked from this beginning, a planted cedar post on the West bank of the River, whence a cottonwood 4 in dia. marked fore & aft bears S60W 18-1/5 varas, another cottonwood 4 in dia marked M bears N47 1/2 W 3-1/5 varas, another 3 inches dia four hacks and a blaze bears N27 1/2 W 2-1/5 varas, the original bearings have doubtless washed into the river.

On Running S 60 W we passed through a farm and struck timber where we found a wide marked line or two or three lines close together from ten to thirty varas apart. We found difficulty in obtaining the magnetic variation on which the line was originally run. From the River the timber extends on about 6 miles to Galindo, by taking the var. 9-1/4 E we found that we were gradually leaving the marked lines to the South and getting North of the County line as it is now held, quitting the old line at tge rate if about 1/4 degree, which would cut off a widening strip from McLennan County thereby missing the N. E. corner of Bell Co. a considerable distance, and believing that an old well marked line traced from an unquestionable beginning should be re-

McLennan Co Bdry Line 7

spected I declined to continue the line on var. 9-1/4 E, and would most respectfully refer the matter to the consideration of your Honorable Body for further instructions and decision as to the legal points involved in the location of said boundary line. I would, however, recommend that the line should be run at the variation of 9-1/2 E as just and equitable to both Counties.

Most respectfully submitted Sept. 21st, 1883.

Andrew Goddard, County Surveyor  
of McLennan Co., Tex.

The Court having ~~fully~~ duly considered said report ordered that same be adopted and line established according to the above field notes, which line will more fully appear from the plat on page No. 587.

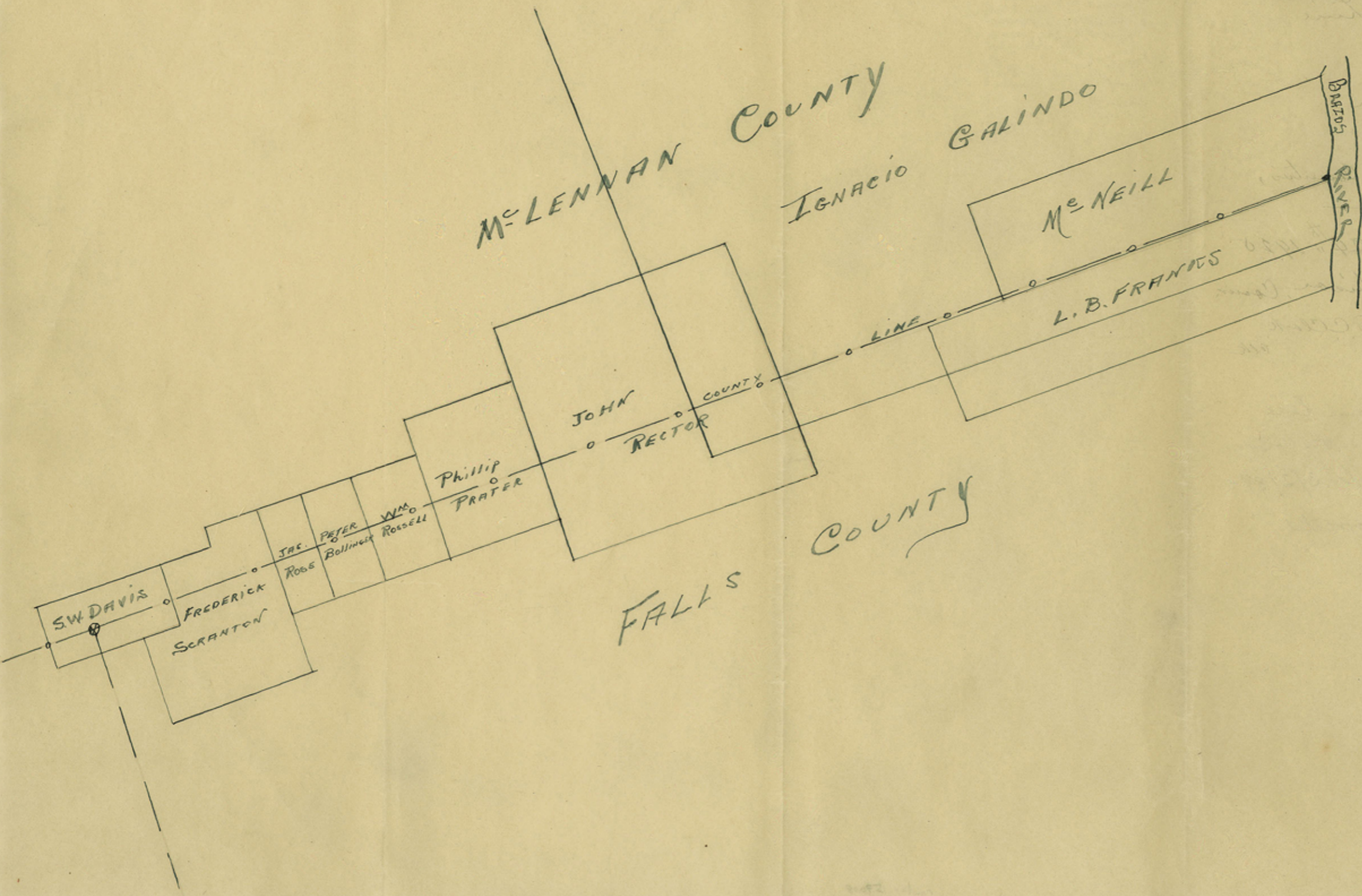
The State of Texas )

County of McLennan ) I, J. W. Baker, Clerk County Court, and Ex-officio Clerk Commissioners' Court, McLennan County, Texas, hereby certify the above and foregoing to be a true and correct copy of report of Andrew Goddard, County Surveyor and orders relating thereto as same appear of record in Vol. "C" pages 585 and 586, Commissioners' Court Minutes, McLennan County, Texas.

Given under my hand and seal of office, on this the 18th day of June, A. D. 1925.

J. W. Baker, Clerk County Court &  
Ex-officio Clerk Commissioners' Court,  
McLennan County, Texas.

By J. W. Alexander Deputy.



Vol C  
Page 587.

6075  
2/11/57

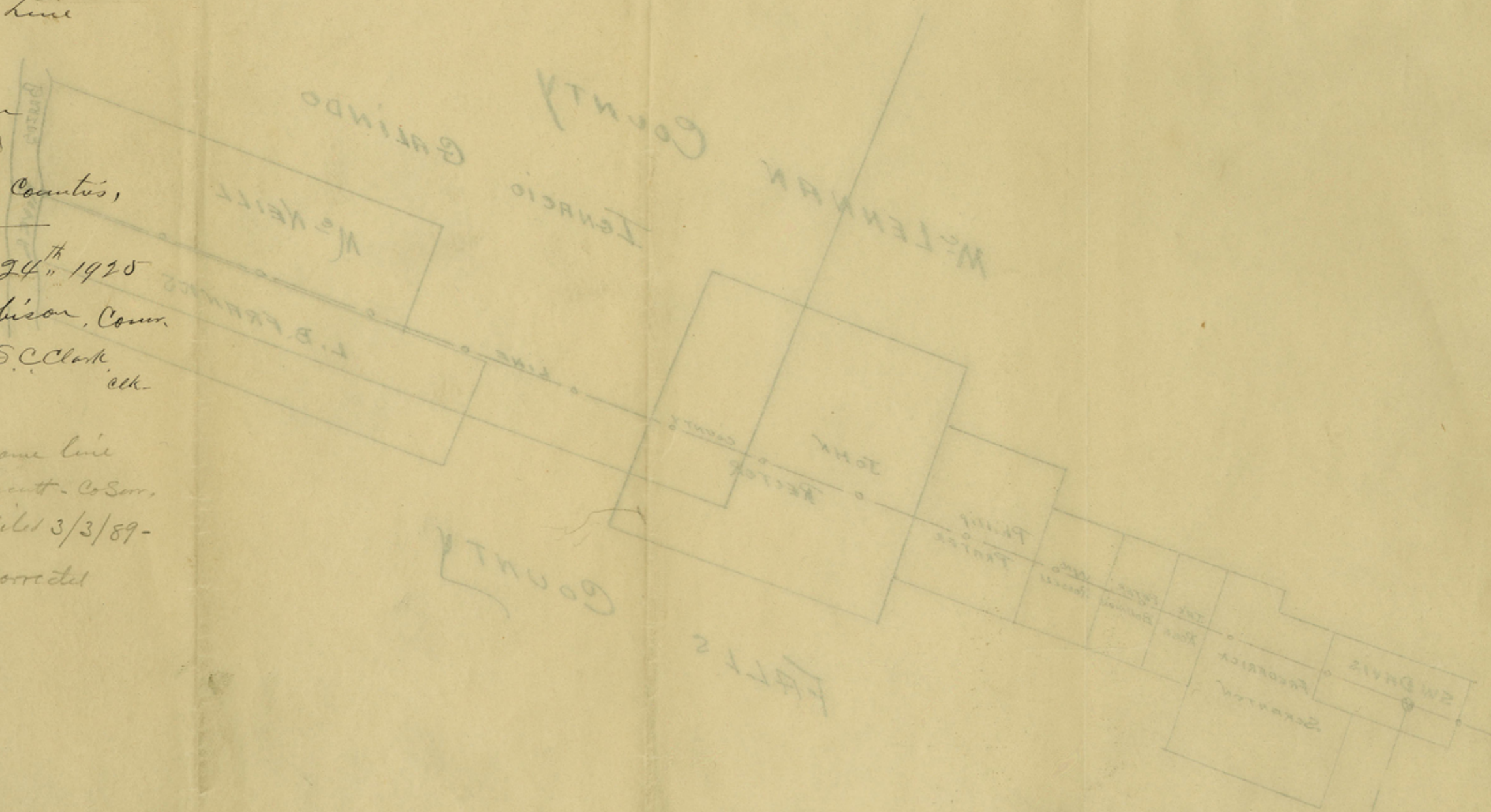
McLennan Co Bdry Line 7

Boundary Line  
Between

McLennan  
and  
Falls Counties,

Filed June 24<sup>th</sup> 1910  
J. Robinson, Comm.  
S.C. Clerk, etc.

See F/m<sup>s</sup> of same line  
by R. S. Hunt - Co. Secy.  
Falls County - Filed 3/3/89 -  
and Abstract corrected  
accordingly



10  
11  
12  
13  
14  
15  
16  
17  
18  
19  
20