

The State of Texas
Milam County. 3 At it was ordered
That there was begun
and held a Special Term of the Com-
missioners Court on Thursday the 19
day of September A.D. 1887 in and
for the County of Milam at the
Court House then of in the Town of
Cameron

There were present William King County
Judge Presiding J. D. Melton
E. J. Smith D. S. Day & A. H. Tracy
Commissioners N. D. Radner
Clerk and Myatt Lipscomb
Shuff proclamaion having been
made according to law the follow-
ing proceedings were had to wit

J. A. Howlett County Surveyor having
as a former Term of this Court been ap-
pointed to survey the County line
between this & Williamson County
presented his report which
is in words & and figures
as follows to wit

Field Notes of a Survey of the County line
between Milam & Williamson Counties
Said Survey being made under an order of
the Commissioners Court of Milam County
Beginning at a
cedar Post the S E Corner of the Thos A
Graves Survey known as the Post Oak Island
Survey from which a Post Oak brs S 16° W $6\frac{1}{2}$
Varas marked A and a Post Oak brs S 75° E 7
Varas marked T Thence W 11° E at 3800 varas
Yegua Creek at 5000 varas the East boundary
line of the A Nant Survey at 10404 varas
South boundary line of W Cook Survey at 13300
varas large branch at 13840 varas East bound-
ary line of W Cook Survey at 15200 varas a
Mound for Corner from which a Post Oak
brs N 17° W 4 varas and a Post Oak brs S 19° E
 $2\frac{1}{2}$ varas on the V W Swearinger Survey thence
N 19° W at 450 varas the North boundary line
of Said Swearinger Survey at 880 varas from
the N W Corner of same at 980 varas old line
at 1710 varas Lexington & Taylor road at 2910
varas North boundary line of W Cook Survey
at 830 varas from N E Corner at 5754 varas
Harrison Owen East boundary line at 6900
varas Rockdale & Elgin road 10050 varas
South boundary line of J P Guthrie Survey
at 2700 varas from S E Corner of same at
12940 varas South boundary line of Geo-
Foley Survey 13720 varas to a point bearing
S 70° W 335 varas from the Corner in the East

boundary line of Said Foley Survey at 16445
varas the South boundary line of the Justo Liendo
Survey at 17115 varas Brushy Creek at 20630
varas the I & G. N. R. R. at the west boundary
line of Said Liendo Survey at 23750 varas
Turkey Creek at 28130 varas to a Point in
the Prairie that bears S 71° W 450 varas from
the S.W. Corner of the Jas W Haroy Survey at
28500 varas the Rockdale & Georgetown Road
at 32300 varas the San Gabriel river at 33480
varas the South boundary line of the Miguel
Davilla Survey at 990 varas from the S.E. Corner
of Said Davilla Survey at 38000 varas a Mound
on Said Davilla Survey for Corner from which
an Elm bears S 87° W 56½ varas and an Elm
bears S 52° W 56 varas thence N 65° W ^{and Recrossing} Cropping ^{and Recrossing} All-
gator Creek & at 4100 varas the Davilla and
Taylor road at 4811 varas a Mound for
Corner from which a Musquitte bears N 67° W 319
varas & a Cottonwood bears N 34° E 209 varas
Said last mentioned Corner bearing S 19° W 5940
varas from the S.E. Corner of the Jesse Mumford
League and being the S. Corner of Bell County
The bearing trees marked M.

The above Survey was begun
on the 20th day of September 1881 and
Completed on the 30th day of Sept 1881 at
which time Mounds of Earth were
Erected at each of the initial Corners
also at the end of each mile on the
respective lines each of Said Mounds being

two feet in light and three feet at the base said County line being marked with two hacks

And said County line being resurveyed under order of Commissioners Court of Wilam County The work beginning on the 29th day of Aug 1882 and completed on the 9th day of September 1882 at which time I connected said County line with the lines of Original Surveys as well as with other natural objects found to exist on the line as described and set forth in the above and foregoing map and Field notes

I Certify that the above Map & Field notes are a true Copy of what I found to exist on the ground

Geo A Howlett
Surveyor Mc

It is ordered by the Court that the above report be approved and a certified copy be forwarded to the Commissioners Court of Williamson County and to the Commissioners of the General Land office at Austin

The State of Texas
Milam County, J. M. Padon
Clerk of the County
Court in & for said County, State
do Certify that the foregoing
contains a true report of the order
of Court approving the Survey of
the County line between Milam
& Williamson Counties and the report
of said Surveyor together with
the map accompanying the same
as the same appears from the
Minutes of said Commissioners
Court now in my office

Given under my hand
and official seal this
the 26th day of Sept 1887
J. M. Padon
Clerk of the County Court

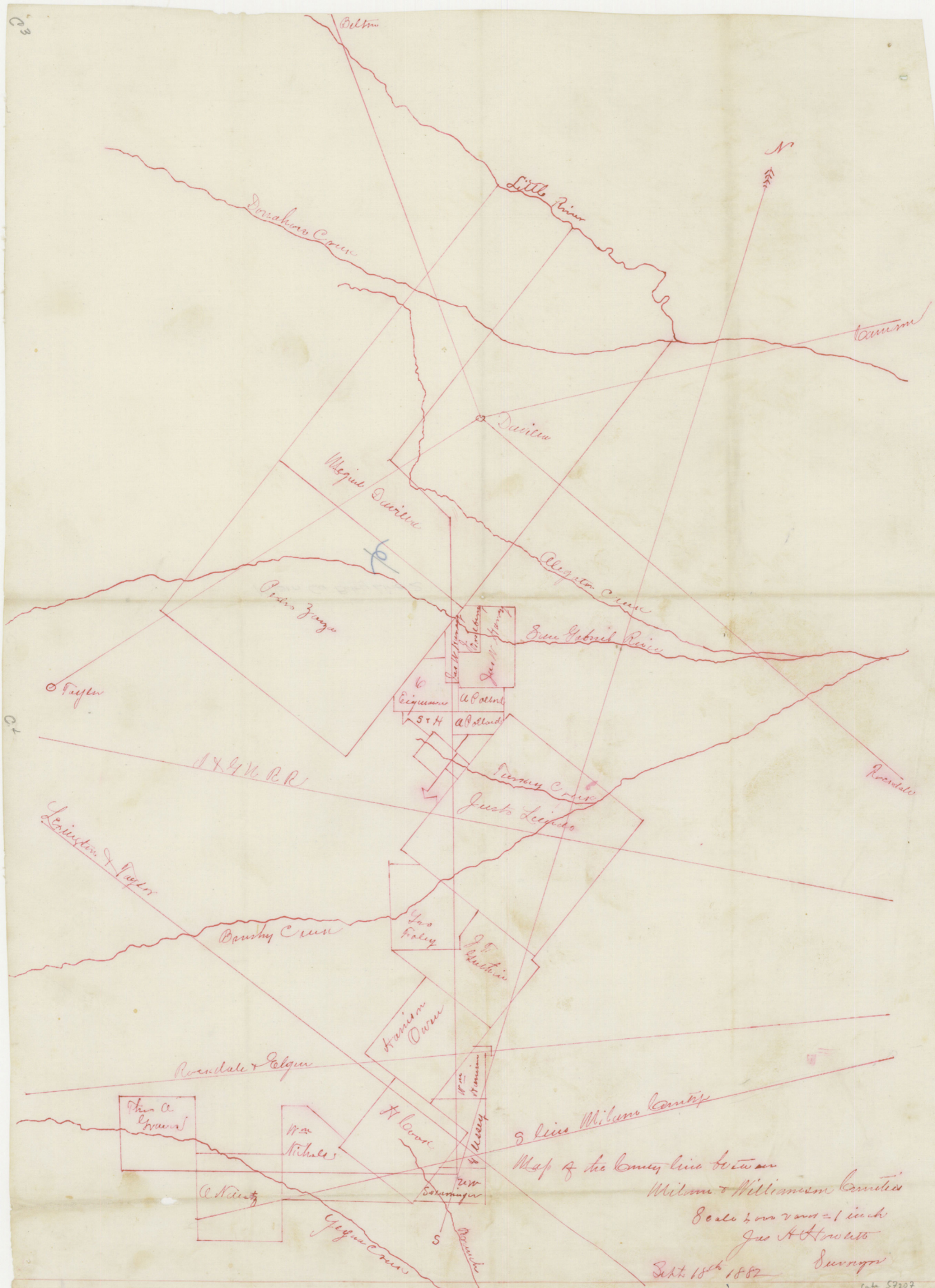
Milam Co Bary Line 2
1887

Recd. Oct. 3, 1887
J. M. Padon
Clerk

note between
Milam & Williamson
10/3/87
Swans

Pa

Milam Co Bary Line 2



3 lines Milam County
 Map of the County line between
 Milam & Williamson Counties
 Scale 2000 rods = 1 inch
 Geo. A. Howard
 Sept 18th 1882
 Surveyor