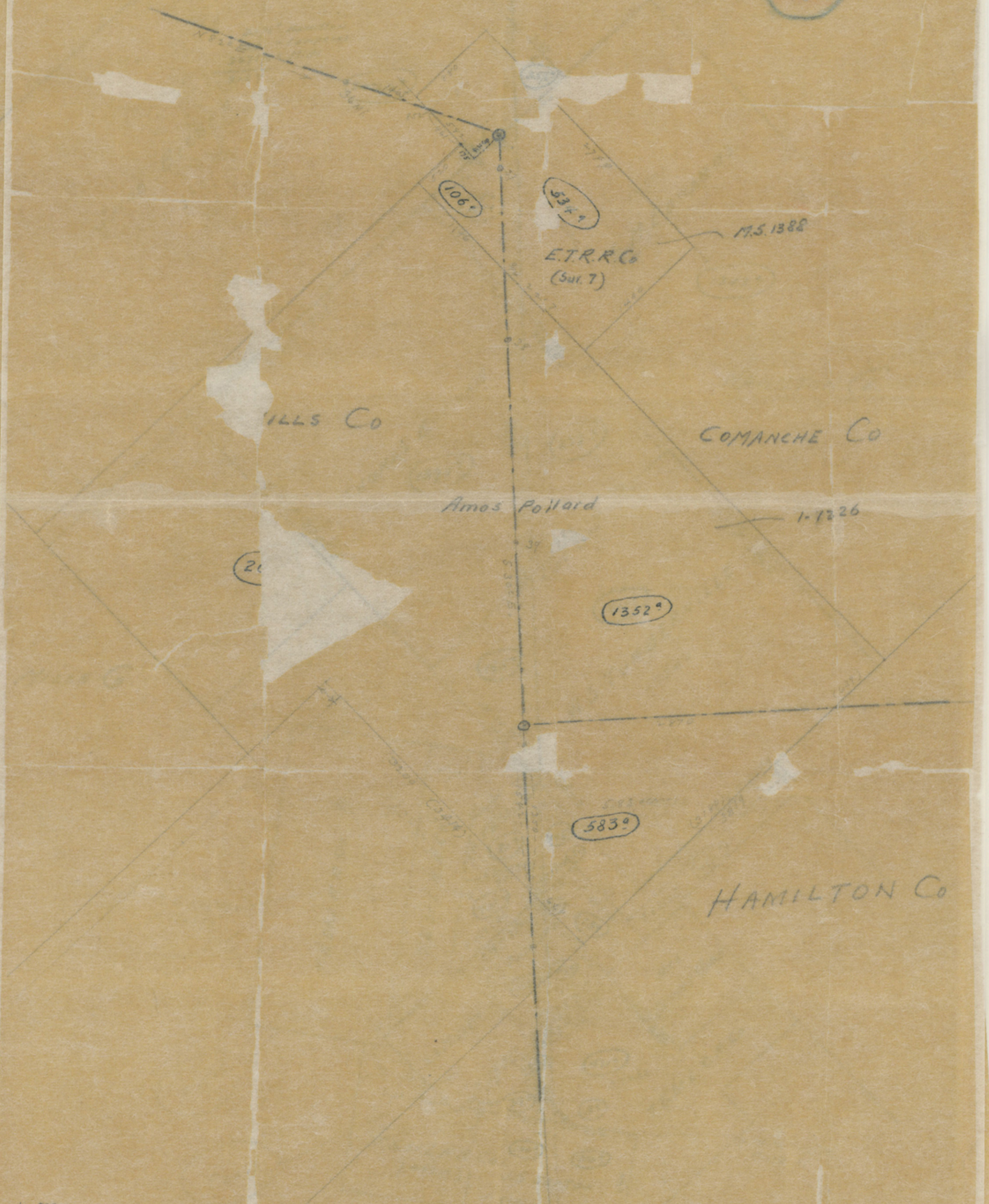


1



Amos Pollard

ETR.R.C.
(Sur. 7)

M.S. 1388

1-1326

MILLS CO

COMANCHE CO

HAMILTON CO

106°

534°

1352°

583°

20

Prepared by office
in connecting Abstrs
3-31-31

Comanche
COUNTY

POLLARD
1-1226

(1)

Hamilton Co Line

AMOS

583°

35 1/2° Hamilton
20° Lampasas
307 1/2° Mills
3127

307 1/2°

35 1/2°

JACOB BECKER
1-1730

S. M. EDWARDS
1-1901

1343°

S 1/4 W 29 27

THOMAS BOWMAN
1-1123

272°

1390°

S 7/8 E 29 25

HAMILTON Co.

MILLS Co.

N 1/2 E 29 27
N 1/2 E 29 74

1311°

165°

W 5 TURBERVILLE
1-1342

T&SLRR Co

T&SLRR Co

R. S. Keeler
1-13285

91°

70°

106°

30°

78°

52°

23°

Mrs LONNY COBB

P 1575

P 4263

SAMUEL

471°

37°

3°

T&SLRR Co
(461 A)

150°

110°

T&SLRR

J.S. DEATON
1-17360

80°

80°

A. Richardson

P 2277

