

REPORT AND FIELD NOTES OF A SURVEY OF THE BOUNDARY LINE

between

MITCHELL AND SCURRY COUNTIES.

TO THE HONORABLE COUNTY COURTS OF MITCHELL AND SCURRY COUNTIES:

Comes now, H. W. Stoneham, Special Surveyor duly appointed, qualified and acting as such for Mitchell County, Texas for survey of Boundary Lines, under and by virtue of an order of the County Court of Mitchell County, Texas made and entered at the July, 1907 Term thereof, by an order duly made and entered of record in Minutes of said Court in Book 3 on page thereof; and Hugh A. Goodwin, Special Surveyor for Scurry County, Texas, duly appointed, qualified and acting as such under and by virtue of an order of the County Court of Scurry County, Texas, made at the regular July Term 1907 thereof by an order of said Court duly entered in the minutes thereof in Book 1 Book 1 Page 488,-- and beg leave to report as follows, to-wit;

(1)

That in accordance with said orders of said Courts we met at the South-west corner of Fisher County, as is fully described and set forth in the Preliminary Report of H. W. Stoneham to the County Court of Mitchell County and on the dates therein set forth, and projected a line west a distance of thirty miles as is fully set out in said report and which said line was after wards corrected in accordance with the result of the shortage in distance found in running South on the West line of Mitchell County, all of which is fully shown in the report last above described, a copy of which is hereto attached and made a part hereof, and that the last measurement of the line indicated certain changes which were made and the line as finally established and agreed upon, is fully described in the field notes and plat hereinafter set forth.

(2)

We beg to report further that while errors in measurements in first survey have shown up and two subsequent ^{measurements} were taken and mile stones corrected, that the work has been carefully checked and that the result as shown in the field notes thereof hereinafter shown, is correct.

We respectfully ask the Courts approval.

120

Mitchell Co Bary Line 16

DESCRIPTION AND FIELD NOTES OF THE BOUNDARY LINE

between

MITCHELL AND SCURRY COUNTIES, TEXAS.

Magnetic Variation 10 14' East--Angle from Polaris in Western Elongation
1 24'.

BEGINNING AT A large stone monument marked S. W. F. Co. 30 W. and S. E. S. Co. and N. E. M. Co. 1907, and N. W. N. Co. which said corner is the original monument set for the South-west corner of Fisher County with the marks as above described --the original corner was a single stone and was marked S. W. F. Co. 30 W--additional stones were secured and marks as above described placed thereon, making the monument about 2 feet square beneath the surface of ground and about 2 feet square and 3 feet high above surface; corner is located in a cane field belong to W H. Neely of Wastella, Texas, and on the North-west quarter of Survey No. 3 in Block No. 24 of the Texas & Pacific Railway Company surveys, at a point 148 varas East of a point 450 varas South 13 East of its North-west corner, which corner is also the North-west corner of Survey No. 4 in Block 24, Texas & Pacific Railway Company surveys and also the South-west corner of Survey No. 21 and South-east corner of Survey No. 22 in Block "Y" of the Texas & Pacific surveys. in Mitchell County, Texas-

(1)

Thence West at 148 varas to lane running on the West line of Survey No. 3 Block 24 Texas & Pacific Railway Company surveys, crossing same at a point 450 varas South 13 East of its North-west corner, at 562 varas center of the track of the Roscoe & Northwestern Railway Company just completed at this point, and continuing west crossing a fence and entering a cotton field in all 1900.8 varas to a set stone monument marked N. L. M. Co. W 1 Mi. at which monument are placed 2 red brick and also cypress stakes driven deep in the ground, from whence a windmill at N. J. Turner's place bears South 10 45 East a distance of about one mile; the windmill at W. J. Turner's place bears South 22 15' West.

(2)

Thence West passing about 25 varas South of the North-west corner of Survey No. 5 in Block No. 24 of the Texas & Pacific Railway Company surveys and crossing the South line of Survey No. 23 Block "Y" of the Texas & Pacific Railway Company surveys at a point about 50 varas South 77 West from its South-east corner, and continuing in all across the open prairie and crossing the North end of a large surface lake a distance in all of 1900.8 varas to a large set stone marked N. L. M. Co. W 2 Mi which stone is surrounded with the bleached bones of a cow, from whence a windmill in a valley or in the edge of a large surface lake bears North 38 30' West about 3/4 of a mile; the windmill at Kidd's place is visible over the top of his barn and bears South 2 30' West about 500 varas;

(3)

Thence West crossing the West line of Survey No. 23 Block "Y" of the Texas & Pacific Railway Company surveys at a point about 415 varas North 13 West of its South-west corner, a fence line, and crossing a large surface lake and public road running North-west, in all a distance of 1900.8 varas to a Large stone 2 feet wide and nearly 3 long 6 inches thick marked on its North face N. L. M. Co. 3 Mi W. 1907 and H. W. S. on its south face, from which a windmill in a drain bears North 52 45' East and a small windmill on a hill bears South 50 15' West.

(4)

(4)

Thence West crossing a fence on the West line of Survey No. 24 in Block "Y" of the Texas & Pacific Railway Company surveys at a point 840 varas North 13 West of its South-west corner, and continuing West crossing a small pasture in all a distance of 1900.8 varas to a stone monument composed of three set stones marked N. L. M. Co. 4 Mi W. 1907 monument in open prairie, from which a windmill bears North 22 45' West; the windmill at Wenkem's Place bears North 37 30' East; Winston Church House on divide bears South 3 15' West about 1300 varas.

(5)

Thence West crossing a lane running along the West boundary line of Survey No. 25 in Block "Y" of the Texas & Pacific Railway Company surveys at a point 635 varas South 13 East of its North-west corner, -crossing a farm on the west side of lane and continuing in all 1900.8 varas to a set stone in stone mound marked N. L. M. Co. 5 Mi W. from whence a windmill bears North 57 15' West; another windmill bears South 83 15' W.

(6)

Thence West crossing the West line of Survey No. 26 in Block "Y" of the Texas & Pacific Railway Company surveys at a point 207 varas South 13 East of the North-west corner and continuing west and crossing the Northern line of Survey No. 27, Block "Y" of the Texas & Pacific Railway Company surveys at a point 300 varas North 77 East of its Northwest corner in all a distance of 1900.8 varas to a set stone marked N. L. M. Co. 6 Mi W. from whence a windmill bears North 47 45' East, the North-east corner of Survey No. 1 bears North 24 15 West 294 varas.

(7)

Thence West crossing the East line of Survey No. 1 at a point 270 varas South of the its North-east corner, and at same point cross the West line of Survey No. 31, Block "Y" of the Texas & Pacific Railway Company surveys, being a point on the West line of Block "Y" Texas & Pacific Railway Company surveys and the East line of Block 3 of the Houston & Great Northern Railway Company surveys, -- continuing west crossing a small pasture, a narrow lane and into another small pasture, in all a distance of 1900.8 varas to a 6" mesquite post with set stones beside it, marked N. L. M. Co. 7 Mi W from whence a Windmill bears South 17 15' West and another windmill bears South 54 45' East, and another bears North 14 15' East.

(8)

Thence West crossing the West line of Survey No. 1 in Block 3 of the Houston & Great Northern Railway Company surveys at a point 270 varas South of its North west corner and crossing a rocky hill and into filed of cotton in valley a distance in all of 1900.8 varas to a thin flat stone 2 feet high marked N. L. M. Co. 8 Mi W. and S. L. S. Co. 8 Mi W 1907 from whence a windmill bears North 30 15' East and a windmill in a draw bears North 33 15' West.

(9)

Thence West crossing a narrow lane running along the West side of Survey No. 3 Block No. 3 of the Houston & Great Northern Railway Company surveys at a point 275 varas South of its North-west corner, and entering a large cotton field, at 1900.8 varas set a large stone monument marked N. L. M. Co. 9 Mi W. 1907 and S. L. S. Co. 9 Mi W. from whence a windmill bears North 55 45' West and Ed Allen's Windmill bears South 83 45' East.

(10)

Thence West crossing a lane running along the west line of Survey No. 13 in Block No. 3 of the Houston & Great Northern Railway Company sur-

at a point 276 varas South of its North-west corner, and entering a draw and continuing west along nearly the center of the draw and crossing a fence at 720 varas, at 1900.8 varas set a large stone marked N. L. M. Co. 10 Mi W. and S. L. S. Co. 10 Mi W. in the center of a large stone mound, on the East bank of Watson's Branch or Little Sulphur Creek, from whence the the N. W. corner of Survey No. 26 is West 200 varas and North 280 varas.

(11)

Thence West crossing the West line of Survey No. 26 Block 3 of the Houston & Great Northern Railway Company surveys at a point 280 varas South of the North-west corner thereof, a fence line, and continuing west crossing and recrossing Little Sulphur Creek or Watson's Branch in all 1900.8 varas to a stone monument in corn field marked N. L. M. Co. 11 Mi W and S. L. S. Co. 11 Mi W. from whence a windmill bears North 19 45' East the west one of two mills bears South 2 30' East.

(12)

Thence West crossing the west Line of Survey No. 41 in Block 3 of the Houston & Great Northern Railway Company surveys at a point 275 varas South of its North-west corner and crossing Little Sulphur Creek or Watson's Branch in all a distance of 1900.8 varas to a set stone monument 3 feet high on rocky point North of Little Sulphur School House in sight of Little Sulphur Bridge marked N. L. M. Co. ~~12 28~~ 12 28 Mi. W. and S. L. S. Co. 12 Mi W. 1907 H. W. S. from whence center of iron span across Little Sulphur Creek on Colorado & Snyder Public bears due west - Road is due west 90 varas, which is at a point ²⁸⁹ varas South of the North-west corner of Survey No. 62 Block No. 3 of the Houston & Great Northern Railway Company surveys.

(13)

Thence West at 90 varas pass under center of Little Sulphur Creek Bridge on Snyder and Colorado Public Road at a point about 289 varas South of the North-west corner of survey No. 62 Block 3 of the Houston & Great Northern Railway Company surveys, and at 1900.8 varas set a large stone marked N. L. M. Co. 13 Mi W in center of large stone mound from whence a windmill bears North 64 15 East and another windmill bears North 79 45' East.

(14)

Thence West crossing the West line of Survey No. 83 in Block No. 3 of the Houston & Great Northern Railway Company surveys at a point 305 varas South of its North-west corner, and continuing over rocky hill and crossing heads of several small drains, in all a distance of 1900.8 varas to a large set stone marked N. L. M. Co. 14 Mi W/ from whence a 4 in mesquite bears North 68 15' East 36 varas and three prong mesquite bears South 4 30' West 10 varas;

(15)

Thence West crossing Deep Creek at a point above its mouth (having already crossed the West line of Survey No. 138, Block No. 3 of the Houston & Great Northern Railway Company surveys ~~at~~ a point ~~about--300~~ 325 varas South of its North-west corner-in all a distance of 1900.8 varas to a large set stone marked N. L. M. Co. 15 Mi W. from whence the N. E. corner stone under a new house bears North 11 West about 300 varas a 4 inch mesquite bears South 45 45' West 13 varas. This monument is on the west slope of a hill.

(16)

Thence West crossing the West line of Survey No. 141 Block No. 3 of the Houston & Great Northern Railway Company surveys at a point about 340 varas South of its North-west corner,- and continuing west crossing and recrossing the Colorado River, in all a distance of 1900.8 varas to

aset stone and a large mesquite post both marked N. L. M. Co. 16 Mi W. and S. L. S. Co. 16 Mi W. from whence a cedar on knoll bears South 3 46' E 180 varas and a 5 inch mesquite bears North 56 48' East ; Mile stone in a small swale among small mesquite.

(17)

Thence West ~~at~~ crossing the West line of Survey No. 194 Block 3 of the Houston & Great Northern Railway Company surveys at a point about 400 varas South of its North-west corner and crossing the Colorado River in all a distance of 1900.8 varas to a mesquite post and set stone marked N. L. M. Co. 17 Mi W. and S. L. S. Co. 17 Mi W. from whence the North-east corner of Survey 31, Kirkland & Field bears West 250 varas and North 1255 varas;

(18)

Thence West crossing open shenery and crossing West line of Survey 29, J. P. Smith surveys at 250 varas, at a point 1255 varas South of its North-west corner, at 1690 varas cross the West line of Survey No. 30, Kirkland & Field survey at a point 1295 varas South of its North-west corner and at ~~the~~ point cross the East line of Survey No. 99, Block No. 97 of the Houston & Texas Central Railway Company surveys at a point 610 varas North of its South-east corner, at 1900 varas a mesquite post and ~~mark~~ rock mound, post marked N. L. M. Co. 18 Mi W. and set in open ~~shenery~~ in C. A. Hardee's Field, from whence J. M. McMurry's windmill bears South 19 14' W. and Hardee's Brick Chimney bears N. 1 14' East;

(19)

Thence West crossing the Colorado River and passing just to the North of Rhode's house and through his field and crossing the West line of Survey No. 99 Block No. 97 of the Houston & Texas Central Railway Company surveys at a point 575 varas North of the South-west corner of ~~the~~, in all a distance of 1900.8 varas to a set stone in ~~the~~ Waldrops Field marked N. L. M. Co. 19 M W. and S. L. S. Co. 19 Mi W. from whence an old rock chimney at Rhode's House bears South 73 16' East-a windmill bears South 10 14' East: J. M. McMurry's windmill bears South 52 16' East.

(20)

Thence West at 1650 varas cross west line of Survey No. 98 Block 97 Houston & Texas Central Railway Company surveys at a point 535 varas North of its South-west corner, at 1900.8 varas ~~at~~ a mesquite post marked N. L. M. Co. W. 20 Mi in open shenery.

(21)

Thence West at 1680 varas cross the West line of Survey No. 97, Block No. 97 of the Houston & Texas Central Railway Company surveys at a point 500 varas North of its South-west corner, at 1900.8 varas set a mesquite post and large earthen mound, post marked N. L. M. Co. W 21 M . Mile Post in open shenery.

(22)

Thence West crossing the Colorado River and the west line of Survey No. 96 Block 97 where it crosses the Colorado River at a point 470 varas North of its South-west corner, at 1900.8 varas set a large stone marked N. L. M. Co. W 22 M in farm.

(23)

Thence West crossing a large farm and at 1631 varas cross West line of Survey No. 95, Block 97 Houston & Texas Central Railway Company surveys at a point 440 varas North of its South-west corner, at 1900.8 varas set 3 stones, one marked N. L. M. Co. W 23 Mi from whence an old cistern in field bears North 35 46' East 100 varas and a windmill bears

N. 68 45' W.

16 B

(24)

Thence West at 1631 varas cross the West line of Survey No. 94 Block No. 97 of the Houston & Texas Central Railway Company surveys, at a point 400 varas North of its South-west corner, at 1900.8 varas set stone in farm marked N. L. M. Co. W. 24 Mi from which a windmill bears North 83 West, another windmill bears South 61 45 East;

(25)

Thence West crossing the West line of Survey No. 93, Block 97 of the Houston & Texas Central Railway Company surveys at a point 360 varas North of its South-west corner, 1900.8 varas to a set stone marked N. L. M. Co. W. 25 Mi. (line passes North of Erwins house) from which a windmill bears North 60 44' East and the brick chimney at Erwin's new house bears South 80 45' West. The South-west corner of Survey No. 93 Block 97, H. & T. C. R'y Co., surveys bears South 45 East;

(26)

Thence West at 1520 varas cross the West line of Survey No. 92 Block No. 97 of the Houston & Texas Central Railway Company surveys at a point 300 varas North of the South-west corner thereof, at 1900.8 varas a set stone marked N. L. M. Co. 26 Mi W. from whence brick chimney at Erwins bears South 69 26' East, and the South-west corner of Survey 92 Block 97 Houston & Texas Central Railway Company surveys bears South 62 36' East;

(27)

Thence West at 1370 varas cross the west line of Survey No. 91 Block No. 97 of the Houston & Texas Central Railway Company surveys, at a point 245 varas North of its South-west corner, and at same point cross the East line of Survey No. 74, Block No. 20 of the Lavaca Navigation Company surveys at a point 575 varas North of its South-east corner, at 1900.8 varas a set stone marked N. L. M. Co. W 27 Mi from whence windmill at Bush & Tillar's old headquarters ranch bears North 75 36' West and another windmill bears South 66 26' East.

(28)

Thence West crossing the North end of a large tank, at 1365 varas cross the West line of Survey No. 74, Block No. 20 of the Lavaca Navigation Company surveys at a point 540 varas North of its South-west corner, at 1900.8 varas set a post and stone marked N. L. M. Co., W 28 Mi in an old field, from whence a windmill at Bush & Tillar's Head Quarters bears 60 36' West and another windmill bears South 87 16' East:

(29)

Thence West at 1395 varas cross the West line of Survey No. 73 and East line of Survey No. 72, both Block No. 20 of the Lavaca Navigation Company surveys, at a point 540 varas North of the South-west corner of 73 and of the South-east corner of Survey No. 72, at 1900.8 varas, made a large stone monument, center-stone-about-4-feet-high-and-marked-Sr-Er-Br Coy-Sr-Wr-Sr-Coy-Nr-Er-Nr-Cor-and-Nr-Wr-Mr-Cor-1907, said monument surrounded by stones making a monument about 4 feet square and 2 feet high, and placed for the North-west corner of Mitchell County, the South-west corner of Seuffy County and North-east corner of Howard County, and also the South-east corner of Borden County; the Sr-Er corner of Borden County as established by Camp in 1837 bears North marked N. L. M. Co. W 29 Mi from whence a windmill on Willow Creek bears South 60 44 1/2' West and windmill at Bush & Tillar's Headquarters bears North 3 East, center chimney at said headquarters North 19 15' East;

(30)

Thence West at 1400 varas cross the West line of Survey No. 72 and East line of Survey No. 71 both in Block 20 of the Lavaca Navigation Company surveys at a point 500 varas North of their S. E. and S. W. corners, at 1900.8 varas set a large stone about four feet high marked N. E. H. Co., S. E. B. Co., S. W. S. Co., and N. W. M. Co., and surrounded by a large pile of stone making a monument about 4 feet square and about 3 feet high, being set for the South-west corner of Scurry County and North west corner of Mitchell County, and making at the same time the N. E. corner of Howard County and S. E. corner of Borden County, --from whence the S. E. corner of Borden county, a set stone marked S.E. Borden in red paint, bears North 35 West 850 varas; the North windmill at Bush & Tillar's Ranch Headquarters bears North 67 30' East about 1 mile, a windmill on the west bank of Willow Creek bears South 79 15' East; Center chimney at Bush and Tillar Ranch bears North 71 44' East; Mill below large tank at said headquarters bears North 70 29' East. This corner is located on North side of valley on south brink of hill, north of willow creek and being on a prominent point is visible from nearly all directions at a considerable distance.

Arthur Miller.

Dwight Henderson.

Chain-Carriers.

Surveyed; August, October and December, 1907.

The State of Texas.

County of Mitchell.

County of Scurry.

We, H. W. Stoneham, Special Surveyor for County Boundary Lines for Mitchell County, and Hugh A. Goodwin, Special Surveyor of Boundary Lines for Scurry County, do hereby certify that the above and foregoing Report and Field Notes of a Survey of the Boundary Line between Mitchell and Scurry Counties, together with the Plat of the Surveys crossed by said lines and upon which said line is shown, are true and correct and that the monuments, mile stones and other objects described in said field notes, natural and artificial, are truly described in said Plat and Field notes; that the survey of said lines, together with the connections to land surveys as shown, was actually made upon the ground in accordance with law; that the chain carriers used and named were duly sworn and instructed as to their duties and responsibilities in the manner provided for by law, and we further certify that the boundary line between said counties as described in the above field notes and the plat thereof hereto attached, and as surveyed by us and located upon the ground, is the line which we have this day agreed upon as the boundary line between said Mitchell and Scurry Counties, Texas.

TO ALL OF WHICH WE HAVE hereunto subscribed our names this the
7th day of February, A. D. 1908.

H. W. Stoneham

Special Surveyor; Representing Mitchell County.

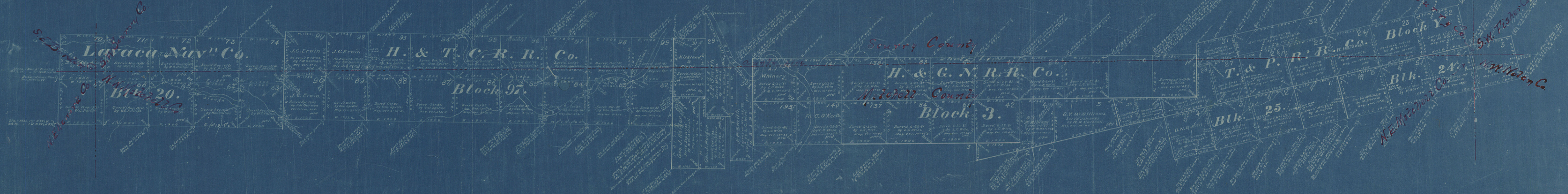
Hugh A. Goodwin

Special Surveyor; Representing Scurry County:

WORKING SKETCH
— IN —

Mitchell & Scurry Cos.

General Land Office,
AUSTIN TEXAS,
8-17-'07.



Scale: 2000 Yards = One Inch.

FCC 4000

205

1907