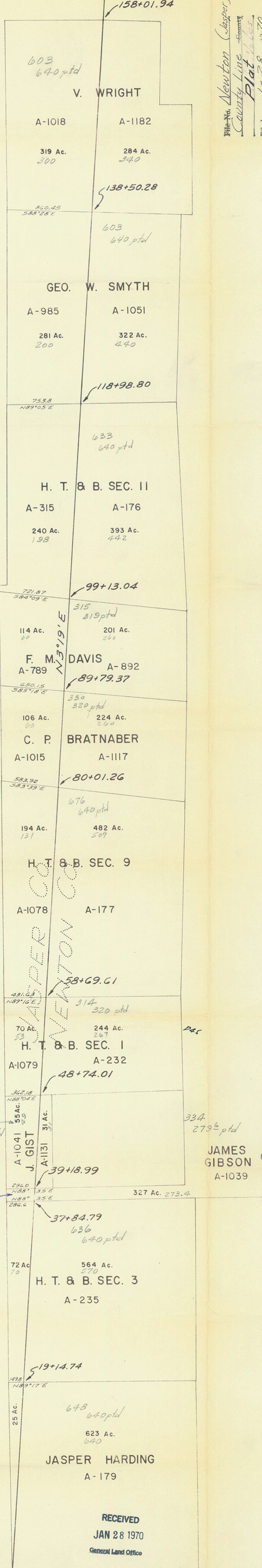
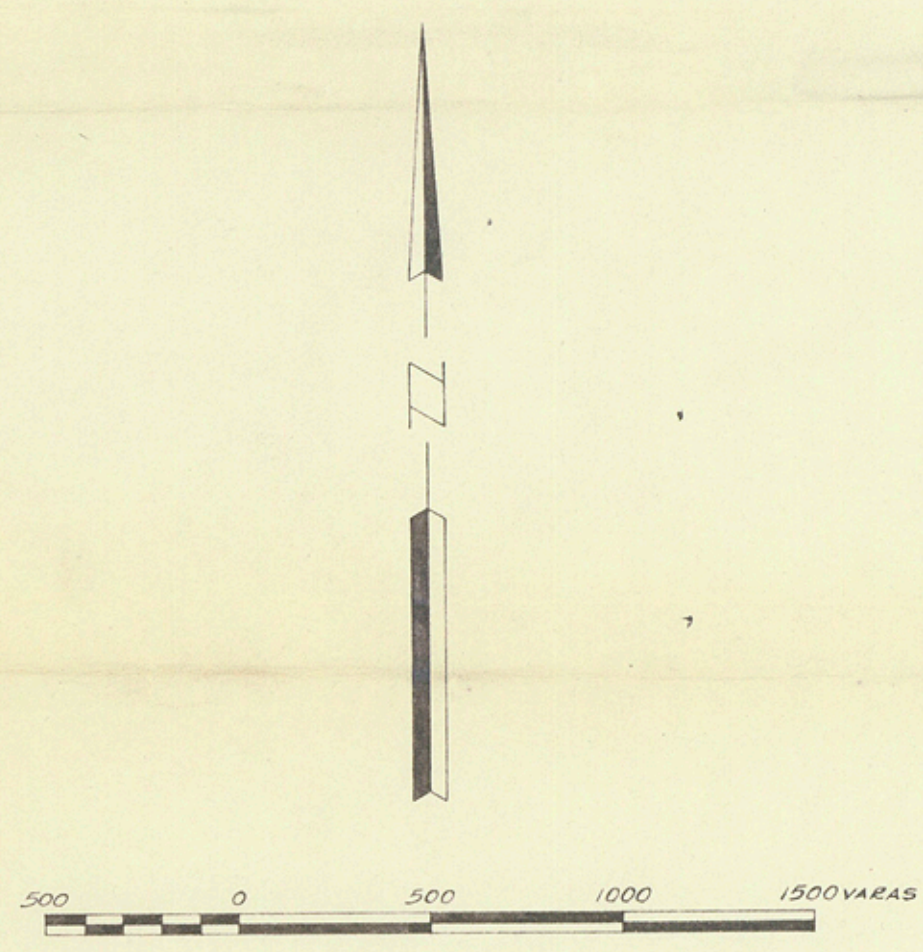


J. M. SWISHER H. T. & B. SEC. I



File No. Newton (Jasper)
 County Line Survey
 Plat 1-28
 Filed 1-28 1970
 By JERRY SADDLER Com'r
J. H. [Signature]



MAP OF
 A PORTION OF
JASPER-NEWTON
 COUNTY LINE

APPROVED:

<u>[Signature]</u> COUNTY JUDGE - JASPER CO.	<u>W. P. Adams</u> COUNTY JUDGE - NEWTON CO.
<u>E. B. [Signature]</u> COMMISSIONER PCT. 1	<u>John Newby</u> COMMISSIONER PCT. 1
<u>[Signature]</u> COMMISSIONER PCT. 2	<u>Ollis Lewis</u> COMMISSIONER PCT. 2
<u>Jack West</u> COMMISSIONER PCT. 3	<u>B. M. Clark</u> COMMISSIONER PCT. 3
<u>Carl [Signature]</u> COMMISSIONER PCT. 4	<u>Jim Stark</u> COMMISSIONER PCT. 4
<u>Euler Hancock</u> COUNTY CLERK	<u>Kathy [Signature]</u> COUNTY CLERK

Recorded Vol. K page 624
 Minutes of Commissioners
 Court Dec. 8, 1969

Recorded Vol. L page 496
 Minutes of Commissioners
 Court Dec. 8, 1969

Surveyed by:
[Signature]
 Reg. Pub. Surveyor No. 1409

JAMES
 GIBSON
 A-1039

RECEIVED
 JAN 28 1970
 General Land Office

ORANGE CO.