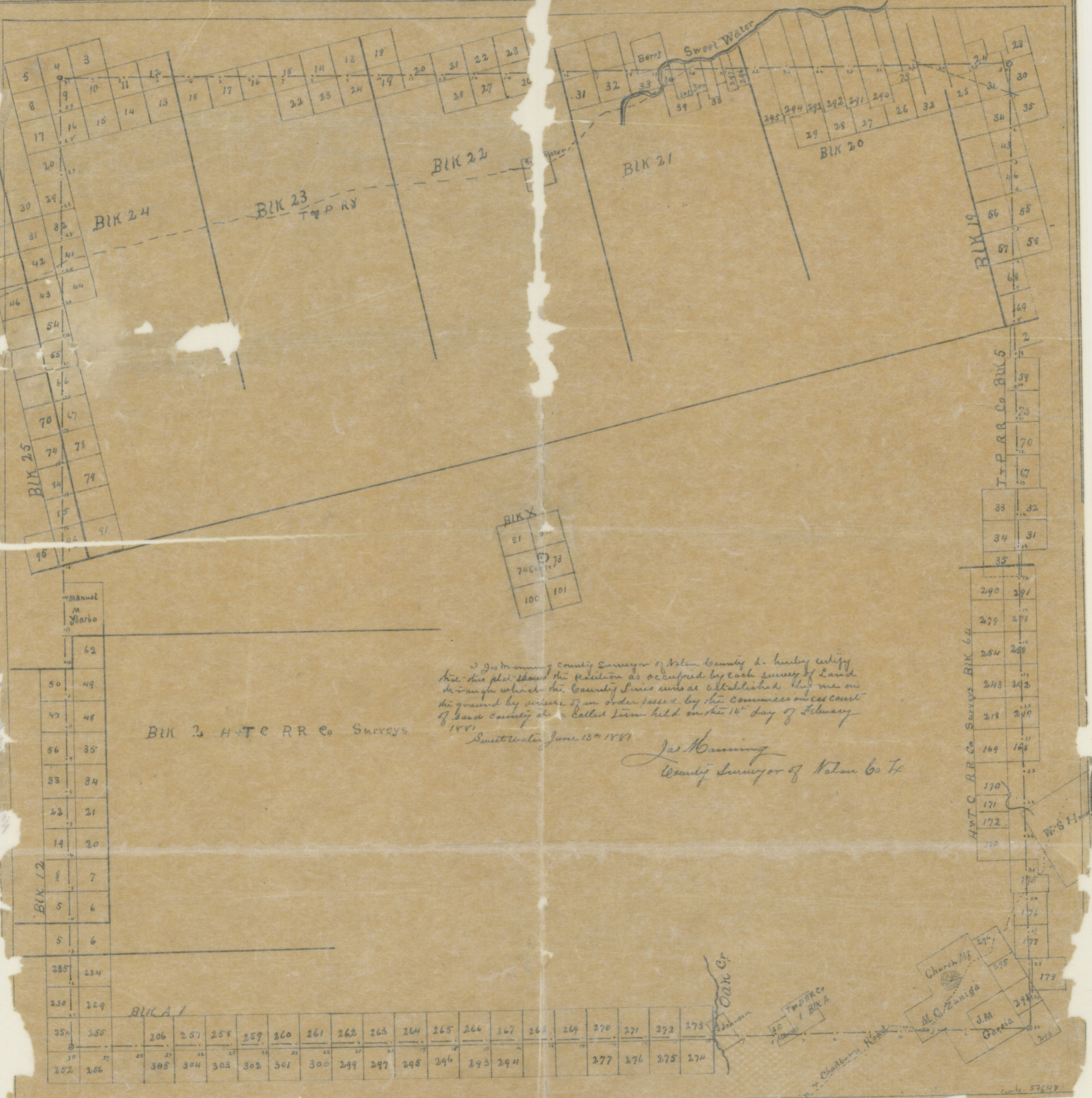


The State of Texas,
County of Nolan } I W. C. Johnson Clerk
of the County Court in and for Nolan Co.
do hereby Certify that this above is a correct
Copy of the map of the boundary lines of
Nolan County as established by the County
Surveyor and which is now on file in my Office.
In testimony whereof Witness my official
Seal and Signature at Sweet-Water this
2nd day of July A.D. 1881.

W. C. Johnson
Clerk.

NOLAN COUNTY

Scale, 4000 bars to 1 inch



Blk 22

Blk 21

Blk 20

Blk 24

Blk 23
TOP RY

Blk 19

Blk X
51
74
100

Blk 2 H T C R R Co Surveys

I, James Manning, County Surveyor of Nolan County, do hereby certify that this plat shows the position as occupied by each survey of Land in range which the County Series runs as established by me on the ground by virtue of an order passed by the Commissioners Court of said County at a Called Term held on the 14th day of February 1881.
Sweet Water June 13th 1881

James Manning
County Surveyor of Nolan Co. TX

Blk A 1

252	256	305	304	303	302	301	300	299	297	295	296	293	294	277	276	275	274		
251	258	206	257	258	259	260	261	262	263	264	265	266	267	268	269	270	271	272	273

Church M.
M.C. Zuniga
J.M. Gopala

OAK CR.

H.T.C.R.R. Co. / Blk A

Chadburn Road