

OCHILTREE-HANSFORD
COUNTY BOUNDARY.

Filed October 10th 1930.

CONTENTS.

- 1 - Field Notes & Plat.
 - 2 - Order Ct. for survey
 - 3 " " Approving survey
 - 4 - Copy Field Notes & orders Court
- } From
Ochiltree
County -
-

Abstracted in Vol. 54

10-14-31.

Wrote Allen + James 11/10/31
C

RUPERT C. ALLEN
COUNTY AND STATE
SURVEYOR
RESIDENCE PHONE 63

OFFICE PHONE NO. 147

1376
DEWEY R. ALLEN
OFFICE MANAGER
NOTARY IN OFFICE
RESIDENCE PHONE 97

ALLEN ABSTRACT COMPANY

ESTABLISHED 1905
MEMBER: TEXAS ABSTRACTERS ASSOCIATION
MEMBER: THE AMERICAN TITLE ASSOCIATION

PERRYTON, TEXAS

MAPS, BLUE PRINTS
WHITE PRINTS

OFFICE AT COURT HOUSE
NORTH ENTRANCE

March 19th, 1930.

Hon. J.H. Walker, Commissioner General ^L and ^O Office,
Austin, Texas.

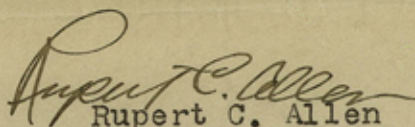
Dear Sir:

Enclosed herewith find report of survey of West Line of Ochiltree
and East line of Hansford Counties as surveyed by joint survey
by said counties.

This report has been recorded in the County Court Minutes of
Ochiltree County in Vol. 2 at page 209.

When your State Abstract Books have been corrected to show the
acres in each county please notify the tax assessor of Ochiltree
County accordingly.

Yours very truly,



Rupert C. Allen
Licensed State Land Surveyor .

RECEIVED

MAR 21 1930

REFERRED TO MAP

"YOUR TITLE IS VITAL"

cont. fut 59685

REPORT OF SURVEY OF WEST
LINE OF OCHILTREE COUNTY, TEXAS.

STATE OF TEXAS,)
COUNTY OF OCHILTREE.)

TO THE HONORABLE COUNTY COURT OF OCHILTREE COUNTY:

In compliance with your order to establish and mark the west boundary of Ochiltree County; We, the undersigned Licensed Land Surveyors met at the South-east corner of Hansford and South-west corner of Ochiltree Counties at 1:00 o'clock P. M. on the 21st day of February A.D. 1929, that being the place and time designated in your order.

By agreement we adjourned to meet the 21st day of March at the North-east corner of Hansford and North-west corner of Ochiltree Counties, being 30 miles west from the North-west corner of Lipscomb County, a large stone set by W.D. Twichell in the year 1897; from which Clark's Monument No. 10 bears west 363.7 varas. (This Monument No. 10 is now marked by concrete monument about 30" high set by U.S.G.L.O. Surveyors.) At this time we proceeded to lay out and mark the said boundary line in accordance with our findings.

A full description of said survey is given in the following pages of field notes and plat hereto attached marked EXHIBIT " A " and EXHIBIT " B " respectively.

Respectfully Submitted,

Rupert C. Allen
Licensed State Land Surveyor, representing Ochiltree County, Texas.

T. D. James
Licensed State Land Surveyor, representing Hansford County, Texas.

Ochiltree Co. Boundary Line 5

Exhibit "A"

FIELD NOTES OF THE SURVEY OF

West Line of Ochiltree County and
East Line of Hansford County

as SURVEYED by

T. O. James, Licensed Land Surveyor, representing Hansford County and
RUPERT C. ALLEN, Licensed Land Surveyor, representing Ochiltree County.

POLARIS OBSERVATION taken at the Northwest corner of Ochiltree and
Northeast corner of Hansford Counties at large stone set by W. D.
Twichell, marked "3020" on East side and "H" on West side, from which
Clarke Monument No. 10 bears West 363.6 varas.

COURSE OF COUNTY LINE bears S. 0° 04' 18" W.

Mile No. 1.

Thence S. 00° 04' 18" W. along west line of Survey 7, Block Z,
Ochiltree County and East line of Survey 22, Block 1, P.F.S. Hansford
County at 120 varas pass 2" galvanized pipe 36" long with 6" turn at
bottom set on small knoll 1242 varas north line Section 1, Block 45,
H. & T. C. Ry. Co. grant from which N.E. corner Section No. 1 bears N. 89°
20' E. 963.7 varas, N.W. corner 1 bears S. 89° 20' W. 952.3 varas, 1900.8
varas to mile post No. 1, a 2" galvanized pipe set & E. Md. 2 feet high.

Mile No. 2.

At 1261.2 varas to N. Line Survey 10, said Block 45 1900.8
varas to mile post No. 2 a 2" galvanized pipe set & E. Md 2 feet high.

Mile No. 3.

At 1247 varas to North line Section 11, Block 45, 1900.8 varas
to mile ppst No. 3 a 2" galvanized pipe set & E. Md 2 feet high

Mile No. 4.

At 1281.8 varas to North line Section 20, Block 45, 1900.8 varas
to mile post No. 4 a 2" galvanized pipe set in draw & E. Md 2 feet high

Mile No. 5.

At 850 varas on North slope of high hill 1316.9 varas to North line
Section 21, Block 45, from which N.E. corner 21 a stone Md. bears N. 89°
20' E. 1030 varas, the N.W. corner 21 bears S. 89° 20' W. 875 varas, 1900.8
varas to mile post No. 5 a 2" galvanized pipe & stone Md. & E. Md. 2 feet
high

Mile No. 6.

At 1341.1 varas to North line Section 30, Block 45, 1900.8 varas
to mile post No. 6 a 2" galvanized pipe & stone Md. 2 feet high

Mile No. 7.

1365.8 varas to North line Survey 31, Block 45, 1900.8 varas
to mile post No. 7 a 2" galvanized pipe set & rock Md. 2 feet high

Mile No. 8.

1378.8 varas to North line Survey 1, Block 2, Washington
County R.R. Co. Grant from which the N.E. corner 1 a stone set bears
N. 89° 20' E. 1100 varas, N.W. corner 1 a stone set bears S. 89° 20'
W. 805 varas, 1900.8 varas to mile post No. 8 a pipe set & E. Md 2 feet
high

Mile No. 9.

At 1390.8 varas to North line Survey 4, Block 2, 1900.8 varas
to mile post No. 9 a 2" pipe set & E. Md 2 feet high

See letter of correction by Rupert C. Allen
dated January 15th 1931 -
1-19-31 Clark

Mile No. 10.

At 1392.6 varas to North line Section 5, Block 2, from which N.E. corner Section 5 bears North $89^{\circ} 20'$ E. 1151 varas, N.W. corner Section 5 bears S. $89^{\circ} 20'$ W. 761 varas, 1900.8 varas to mile post No. 10 a 2" pipe set & E. Md. 2 feet high

Mile No. 11.

At 1391.8 varas to North line Section 8, Block 2, 1900.8 varas to mile post No. 11 a 2" pipe set & E. Md. 2 feet high

Mile No. 12.

At 1376.8 varas to North line of Survey 9, Block 2, 1900.8 varas to mile post No. 12 a 2" pipe set & E. Md. 2 feet high

Mile No. 13.

At 1376.8 varas to North line Section 11, Block 2, 1900.8 varas to mile post No. 13 a 2" pipe set & E. Md. 2 feet high

Mile No. 14.

At 1380 varas to North line of Section 22, Block 2, 1900.8 varas to mile post No. 14 a 2" pipe set & E. Md. 2 feet high

Mile No. 15.

At 1379.5 varas to North line of Section 23, Block 2, 1900.8 varas to mile post No. 15 a 2" pipe set & E. Md. 2 feet high

Mile No. 16.

At 1399.1 varas to South line Section 23, Block 2, W. C. R. R. Co. Grant & North line Survey 10, Block 4T, T. & N. O. R. R. Co. Grant from which the S.E. corner 23 bears N. $89^{\circ} 10'$ E. 1306 varas, the S.W. corner 23 a $\frac{3}{4}$ " pipe bears S. $89^{\circ} 10'$ W. 594 varas, the N.E. corner Survey 10, Block 4T, a 2" pipe at fence corner bears N. $89^{\circ} 10'$ E. 1032.5 varas, the N.W. corner of Survey 10, Block 4T, bears S. $89^{\circ} 10'$ W. 870.5 varas, 1900.8 varas a 2" pipe & E. Md. 2 feet high

Mile No. 17.

At 501 varas cross center line of N.T. & S. Fe R.R. track, from which Railroad mile post No. 76 bears N. ~~32X~~ $58^{\circ} 59'$ E. 535.7 varas 1385.2 varas to North line of Section 27, Block 4T, 1900.8 varas to mile post No. 17 a 2" pipe set & E. Md. 2 feet high

Mile No. 18.

At 1394.9 varas to N. line Section 43, Block 4T, 1900.8 varas to mile post No. 18 a 2" pipe set & E. Md. 2 feet high

Mile No. 19.

At 1404.8 varas to North line of Section 52, Block 4T, 1900.8 varas to mile post No. 19 a 2" pipe set & E. Md. 2 feet high

Mile No. 20.

At 1407 varas to ^{North} ~~South~~ line Section 73, Block 4T, 1900.8 varas to mile post No. 20 a 2" pipe set & E. Md. 2 feet high

Mile No. 21.

At 1406.8 varas to North line Section 82, Block 4T, 1900.8 varas to mile post No. 21 a 2" pipe set & E. Md. 2 feet high

Mile No. 22.

At 1900.8 varas to mile post No. 22 a 2" pipe and E. Md. 2 ft. high

Mile No. 23.

At 1900.8 varas to mile post No. 23 a 2" pipe set & E. Md. 2 feet high

Mile No. 24.

At 1900.8 varas to mile post No. 24 a 2" pipe set & E. Md 2 feet high

Mile No. 25.

At 1900.8 varas to mile post 25 a 2" pipe set & E. Md 2 feet high

Mile No. 26.

At 1408.3 varas to South line Section 142, Blk. 4T & North line Survey 1, Block 2, J. F. Torrey Grant from which S. W. corner 142 bears S. 89° 25' W. 611.5 varas same being the N.W. corner Survey 1, Block 2, J. F. Torrey Grant, 1900.8 varas to mile post No. 26 a 2" pipe & E. Md. 2 feet high

Mile No. 27.

At 1900.8 varas to mile post No. 27 a 2" pipe & E. Md. 2 feet high

Mile No. 28.

At 1421.8 varas to North line Survey No. 25, Block R, 1900.8 varas to mile post No. 28 a 2" pipe & E. Md. 2 feet high

Mile No. 29.

At 1422.8 varas to North line of Survey 46, Block R at 1900.8 varas to mile post No. 29 a 2" pipe & E. Md. 2 feet high

Mile No. 30.

N. line of Sec. 55 BIK. R. - 1900.8 varas to
At 1423.8 varas to mile post No. 30 a 2" pipe & E. Md. 2 feet high

30 miles plus 12731 varas to Concrete monument set 30" high marked "O.H.H. & R." the S.W. Corner of Ochiltree, S.E. corner Hansford, N.E. corner Hutchinson and N.W. corner Roberts Counties, from which a concrete monument by Twichell bears South 40.3 varas.

All of the above mentioned pipe set for mile post are from 30" to 36" in length and marked "O" on E. side and "H" on W. side.

The acreage in Ochiltree and Hansford Counties in Surveys traversed by the line is shown on the attached plat marked "Exhibit B"

Dated January 7th, A. D. 1930.

T. J. James
Licensed Land Surveyor representing
Hansford County, Texas.

Rupert C. Allen
Licensed Land Surveyor representing
Ochiltree County, Texas.

① Ochiltree & Hansford
County Boundary -
Field Notes & Plat.

Filed Oct. 10th 1930

J. H. Walker, Comm.
Clark.

County Line Report
+ Survey of
West line Ochiltree
and
East line Hansford
Counties, Texas.

Filed Feb 10 1930
Deer Shanks
Co. Tex
By B Allen
Depr.

< Vol 2 Page 204
Co. Clark Min. >

Vol. 2. Page 209
Co. Clark Min.

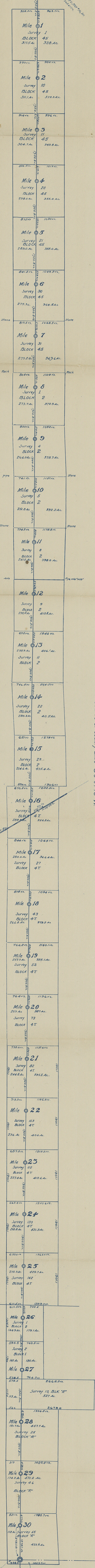
1965 5969

TEXAS COUNTY OKLAHOMA

NE. COR. HANSFORD CO. NW. COR. OCHILTREE CO.



NOTE:
All county line mile posts are marked by an iron pipe set in earth round except miles 28 & 29, which are iron pipes in mounds of rock.



PLAT OF A SURVEY
of the
WESTERN BOUNDARY OF OCHILTREE CO.
EASTERN BOUNDARY OF HANSFORD CO.
SURVEYED
by
RUPERT CALLEN, Licensed Land Surveyor, Ochiltree County,
T. O. JAMES, Licensed Land Surveyor, Hansford County.
Scale: 1 inch = 1000 feet.

True Course of County Line S 0° 04' 18" W

570
590
276

SURVEYORS CERTIFICATE

We, Rupert Callen & T. O. James, Licensed Land Surveyors, do hereby certify that the PLAT hereon is true and correct and of a survey made by us on the ground pursuant to orders of the County Courts of Ochiltree & Hansford Counties, Texas, authorizing the survey and marking of the common boundary between said counties. In witness whereof we sign, this 7th day of October, 1930.

Rupert Callen
Licensed Land Surveyor
T. O. James
Licensed Land Surveyor



EXHIBIT B

Exhibit "B"

HANSFORD CO. OCHILTREE COUNTY
HUTCHINSON CO. ROBERTS COUNTY

From NW. Cor. Ochiltree County
to NE. Cor. Hansford County
by
Survey of 1930
by
Rupert Callen & T. O. James