

600  
317  
343

Upper figures Surv. Acreage  
Lower Show Area on Files.

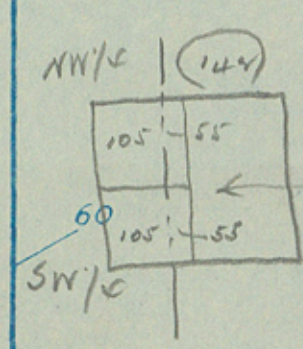
Abstracted in Vol. 54.  
10-11-1931

W.T. Hungate 25 W. Hungate 7 W. Hungate 8 W. Hungate 9 W. Hungate 9  
R.B. Newcome

Hansford 12  
Ochiltree

18/14/31

HANSFORD COUNTY



2	1	28	27	26	25
317 <sup>5</sup> 317 5.7206	328 333 335	William Wilmoth Anthony 49869			
9	10	ptd.			
12	11	ptd.			
19	20	H.C. Day T.J. Sparks W.J. Mitch 52808			
22	21	ptd.			
29	30	ptd.			
32	31	ptd.			
2	1	G. H. & H. I			
273 <sup>2</sup> 273 8360	372 <sup>9</sup> 367 347	ptd.			
3	4	ptd.			
6	5	Block			
7	8	ptd.			
10	9	ptd.			
12	11	ptd.			
21	22	ptd.			
24	23	ptd.			
28	27	ptd.			
42	43	ptd.			
53	52	ptd.			
72	73	ptd.			
83	82	Block 4T.			
102	103	ptd.			
113	112	ptd.			
132	133	ptd.			
143	142	ptd.			
8	7	ptd.			
140	139	ptd.			
113	112	ptd.			
26	25	ptd.			
45	46	ptd.			
56	55	ptd.			
80	79	ptd.			
15	14	ptd.			
3	2	ptd.			
52	51	ptd.			
181	180	ptd.			
181	180	ptd.			
167	166	ptd.			
35	34	ptd.			
40	39	ptd.			
40	39	H.F.M. Donald.			