

January 12, 1940

Assessor-Collector
Lipscomb County
Lipscomb, Texas

Dear Sir:

Inclosed please find photostat copy of the Lipscomb-Ochiltree boundary line showing number of acres in each tract of land in each county thru which the County line runs.

The acres in Ochiltree County are shown to the left of the County line, and in Lipscomb County on the right side of the line, in the Section Number, and the total number of acres to the right of the section, with the Land Office File number, which you will readily understand. In many instances the acreage shown by the surveyor sketch does not agree with the latest field notes filed in this office.

We have followed the acreage as shown on our files at this time. The corrected acreage-division shown on this print will be reflected in the next printed Abstract Volume, Number 62.

Carbon of this letter, and an exact photostatic copy of the boundary line is being mailed to the Assessor-Collector of Ochiltree County, at Pertyton.

Very respectfully

Bascom Giles

Bascom Giles
Commissioner
General Land Office

1 Incl.
cc:to Assr-Coll-
Ochiltree Co.
RBN:cl

January 12, 1940

Mr. E. H. Ervin
Special Surveyor
Lipscomb, Texas

Dear Sir:

Inclosed find photostatic print of the Lipscomb-Ochiltree boundary line, as surveyed by you and Mr. Rupert C. Allen, as special surveyors for these two counties, which print shows a few corrections in the acreage from your figures. We have had to follow the acreage as shown from the official files at the present time in determining the total in each survey.

You will notice at the North end of this line, I have inserted one extra survey not shown by you; this being the 90.4 acre Survey Number 3, S. F. 13869, lying immediately North of survey 10, W. P. Wiser 640 acres, and South of the Oklahoma line. This tract of land was surveyed for Evan Anderson by Albertis Montgomery, Licensed State Land Surveyor, and the field notes are recorded in the office of Rupert C. Allen, County Surveyor of Ochiltree County, Volume 2, Page 142, and awarded to Evan Anderson by this office on November 15, 1938. These field notes show that one acre is in Ochiltree County, but we have abstracted the full 90.4 acres in Lipscomb County.

Carbon of this letter, and photostat copy of the boundary line is being sent to Mr. Rupert C. Allen, Special Surveyor at Perryton.

I wish to congratulate you two gentlemen on this nice piece of work.

Very respectfully

Bascom Giles

Bascom Giles
Commissioner
General Land Office

1 Incl.
cc: to Assr-Coll.
Lipscomb Co.
RBN;cl

PLAT OF A SURVEY OF THE WEST BOUNDARY OF LIPSCOMB CO. EAST BOUNDARY OF OCHILTREE CO.

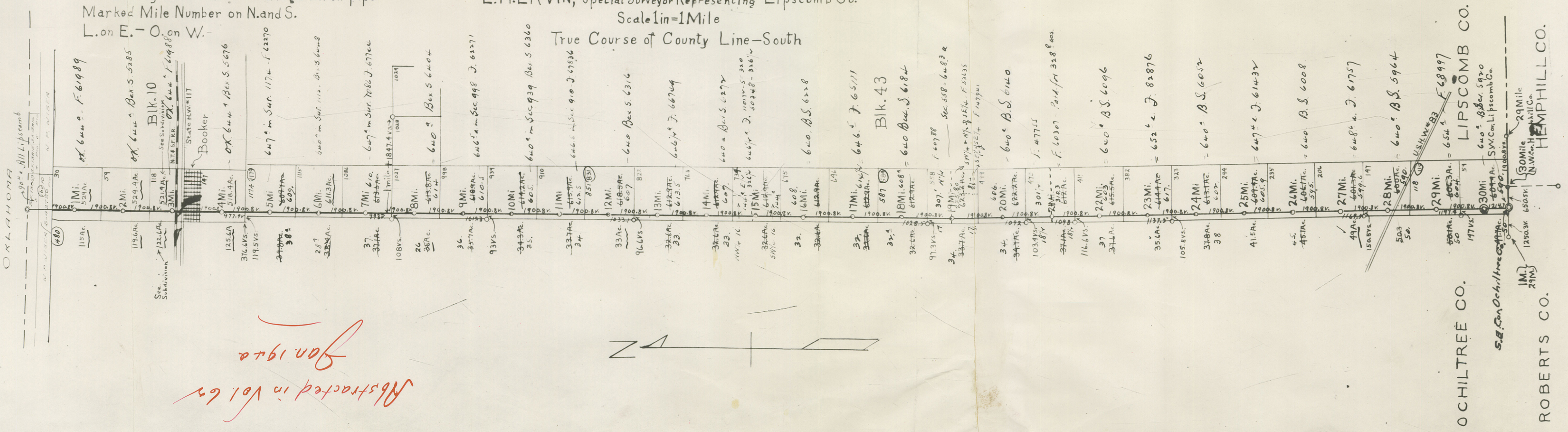
SURVEYOR'S CERTIFICATE

We, Rupert C. Allen & E. H. Ervin, Special Surveyors for Ochiltree & Lipscomb Co. do hereby certify that the plat here on is true and correct and a survey made by us on the ground, pursuant to orders of the County Courts of Lipscomb & Ochiltree Counties, Texas, authorizing the survey and marking of the common boundary between said Counties.
In Witness whereof we sign this the 7th day of September 1935.

Rupert C. Allen
Special Surveyor for Ochiltree Co.
E. H. Ervin
Special Surveyor for Lipscomb Co.

SURVEYED BY
RUPERT C. ALLEN, Special Surveyor Representing Ochiltree Co.
E. H. ERVIN, Special Surveyor Representing Lipscomb Co.
Scale 1 in = 1 Mile
True Course of County Line - South

NOTE -
All County Line Mile Posts, 2" galv. iron pipe
Marked Mile Number on N. and S.
L. on E. - O. on W.



Abstracted in Vol 62
Jan 1914