

7  
Field Notes of south boundary  
line of Hartley County and north  
boundary line of Oldham County  
state of Texas

Beginning at a large rock set in  
ground in the line of the  
United States and Texas bound-  
ary line as surveyed in 1859  
said stone is marked on  
~~south~~<sup>north</sup> side. S.W. H<sup>x</sup> on south side  
N.W. O<sup>m</sup> is the S.W. corner of Hartley  
County and the N.W. corner of  
Oldham County and is <sup>comely</sup>  
south of cedar post and flat stone  
set in ground post marked west  
side "N.M. L. 103 1859" and on east side  
"X T L A. BOBO, A D 1859" the North west  
corner of the Panhandle of Texas.

From said rock a mound  
and 4 pits the N.W. corner of Cop-  
itol league 194 <sup>1/2</sup> Vrs. N. 2633 <sup>1/2</sup> Vrs.

Thence East 202 <sup>1/2</sup> Vrs. to large rock set in  
ground marked O which is 121 <sup>1/2</sup> Vrs.  
north of north prong of the Agua  
Caballo.

Thence East 1900 <sup>1/2</sup> Vrs. to rock set in ground  
marked 1

Thence East 1900 Vrs. to rock set in ground  
marked 2

Thence East at 588 Vrs. whence 4 stones  
the S. E. corner of Capitol League  
194 Vrs. South 2420 Vrs.  
at 1900 Vrs. to rock in ground  
marked 3.

Thence East 1900 Vrs. to rock set in ground  
marked 4

Thence East at 1882 Vrs. to point whence  
stones of large rocks the N. W. corner  
of Capitol League 196 Vrs. South  
2557 Vrs., 1900 Vrs. to 2 rocks set in  
ground marked 5

Thence East 1900 Vrs. to rock in ground  
marked 6.

Thence East 1900 Vrs. to mound and circular  
trough (7)

Thence East 1900 Vrs. mound 8.

Thence East 486 Vrs. cross Ymirmeosa Creek.

Thence East at 1000 Vrs. cross Ymirmeosa Creek

~~Thence East~~ at 1337 cross Ymnucoso Creek

~~Thence East~~ at 1900 lbs to rock set in ground marked 9

Thence East at 1227 lbs Ymnucoso Creek at mouth of branch from the north at 1294 lbs cross Ymnucoso Creek at 1900 lbs to rock in ground marked 10.

Thence East at 886 lbs cross Spring Creek 1900 lbs <sup>to rock</sup> set in ground in middle of old road 11

Thence East at 1144 cross Stay Creek at 1512 lbs cross branch 1900 lbs to well & stones piled around marked 12. 7

Thence East at 1116 lbs cross creek at 1792 lbs to point where a mound and 4 feet the N.W. corner of Copitol <sup>of</sup> ~~Prayer~~ 188 lbs North 7249 lbs 1900 lbs to well set in ground marked 13 with 5 stones piled around it.

Thence East at 1674 lbs cross ~~draw~~ running towards North 1900 lbs to rock set in ground marked 14

4

Thence East at 1395 across draw 1900 Vrs  
to rock set in ground marked 15.

Thence East at 620 Vrs across draw at 477  
across draw at 612 at 820 Vrs across  
at 892 Vrs whence pile stones S.W. Cor-  
ner 246 Vrs. S 7880 Vrs at 1697 Vrs across  
draw 1900 to rock set in ground  
marked 16.

Thence East at 18 Vrs cross Buck Arroya  
at 774 Vrs across Buck Arroya at  
945 junction of Buck Arroya and  
Pomera Creek at 972 Vrs leave Pomera  
creek at 1900 Vrs rock set in ground  
on west slope of ridge marked  
17

Thence East at 1424 Vrs cross East line of  
survey 40 L.C. 2 at 1900 Vrs rock  
in ground marked 18

Thence East at 1782 cross draw at 1900 Vrs  
rock in ground and pile of stones  
on north slope of bluff marked 19

Thence East at 1440 cross west prong of  
Pedrosa Creek at 1900 Vrs stone  
in ground marked 20

Thence East at 756<sup>th</sup> cross prong of Pedrosa  
Creek at 1900<sup>th</sup> rock set in ground  
marked 21

Thence East at 1656<sup>th</sup> cross draw at 1782  
cross draw at 1900<sup>th</sup> to rock set  
in ground marked 22

Thence East at 234<sup>th</sup> cross draw at 1476  
cross draw at 1872 cross draw  
at 1900<sup>th</sup> rock in West edge of  
draw marked 23

Thence East at 1800 cross draw at 1900<sup>th</sup>  
rock in ground marked 24

Thence East at 108<sup>th</sup> cross draw at 1900  
to 2 rocks set in ground marked  
25

Thence East at 1584<sup>th</sup> cross West prong of  
Pedrosa Creek at 1900 rock set in  
ground marked 26

Thence East at 504<sup>th</sup> cross draw at 1872  
cross draw at 1900 to stone set  
in ground marked 27

Thence East at 1044<sup>th</sup> cross Road Amosita ~~at~~

6

Rita Blanca at 1728 cross draw at 1900Vw  
to rock set in ground marked 28

Thence East at 108Vw cross draw at 720Vw  
head of draw at 1836Vw cross  
Moneta Creek at 1900 rock in ground  
and 2 large stones marked 29

Thence East 200Vw cross draw at 1260Vw  
cross draw at 1900 rock set in  
ground marked 30

✓ Thence East at 280Vw Edge of West Break of  
Rita Blanca at 1206Vw cross draw  
at 1440Vw cross draw at 1900Vw to  
rock set in ground marked 31

Thence East at 1211Vw point: whence  
Rock in ground marked "FMM 1878  
November 20<sup>th</sup>" on north West side  
North West corner Survey 38 Blk  
49 br North 2684Vw 1900Vw to Rock  
in ground marked 32

Thence East at 294Vw Rock Mound on  
edge of Bluff at 432Vw enter Rita  
Blanco Creek at 484 leave Rita  
Blanco Creek at 1900Vw Rock in  
ground marked 33

7

Thence East at 940 a forked Cottonwood  
Tree the west one of the  
5 large Cottonwoods in bed  
of Las Padas marked  $\Sigma$  at 1900  
rock set in ground marked  
34

Thence East at 1900 W Rock in ground  
marked 35

Thence East at 390 W cross drain at 1420  
cross drain at 1900 rock set in  
ground marked 36

Thence East at 1900 W to mound and  
circular trench (37)

Thence East at 522 W cross drain at 754 W  
cross Tascosa x El Muroa Road at  
1900 mound and circular trench  
(38)

Thence East 90 W cross drain at 1476 W  
cross West Prong Cheyenne Creek  
at 1900 W rock set in ground  
and pile of stones marked 39

Thence East at 28 W cross center of F.W.  
+ D. C. R. R. br + North  $36^{\circ} 25'$  East

8

107 1/2 Vm. South 36° 25' West from mile  
post  $\frac{D421}{F.W.383}$  at 828 Vm Edge of Break mid  
dle prong of Cheyenne Creek at  
1188 Vm cross draw at 1800 cross draw  
at 1900 2 rocks in ground out marked  
40

Thence East at 144 Vm cross draw at 504 Vm  
cross head of draw at 752 Vm point  
whence stone on ground S.W.  
corner Capitol Legue 222 Vm South  
1348 at 1160 Vm cross draw at 1440 Vm  
cross Middle Prong Cheyenne Creek  
at 1900 rock on ground marked  
41

Thence East at 270 Vm cross draw at  
1900 rock in ground marked  
42

Thence East 290 Vm cross draw at 1900 Vm 2  
rocks in ground marked  
43

Thence East at 126 Vm cross road prong  
Cheyenne Creek at 1900 mound  
and circular Truck (44)

Thence East at 360 cross draw at 900 Vm  
cont. 57741



9

cross draw at 972 cross draw  
at 1900 rock in ground marked 45

Thence East at 120 cross draw at 346 point  
whence S. E. corner Cap. Sq. 228 brs  
North 3487 and S. W. corner Blk 44  
N. + E. brs North 8508 and North 89  
15 West 1400 brs at 1296 main prong  
of Rice Creek at 1900 pile of stones  
(46)

Thence East at 744 cross draw at 1026 brs  
cross draw at 1728 cross draw  
at 1900 Rock in ground marked  
47

Thence East at 1044 brs cross draw at  
1440 brs cross draw at 1900 brs  
rock on ground marked 48

Thence East at 152 brs Large Rock on  
ground S. E. <sup>and N. W. P. S.</sup> H<sup>y</sup> + N. E. O<sup>m</sup>. The  
South East corner of Hartley  
County, South West corner  
Moore County, North West  
corner Potter County and  
the North East corner  
Oldham County.

I, D. B. Braid, Surveyor of Oldham  
 Land District Texas, do hereby  
 certify that the foregoing survey <sup>was</sup> made on the Ground, <sup>by E. J. Batte & myself</sup> and that  
 the limits, boundaries, and corners  
 natural and artificial are fully  
 described in the accompanying  
 sketch, & foregoing Field Notes.

D. B. Braid  
 Surveyor  
 Oldham Land Dist.  
 Texas.

Jasosa }  
 8<sup>th</sup> Feb. 192 }

1624. CERTIFICATE OF RECORD.

For Sale by Geo. D. Barnard & Co., Pres., St. Louis. E-GX. Class 6

THE STATE OF TEXAS,

County of Oldham } I, O. B. Bower, County Clerk  
 in and for said County, do hereby certify that the foregoing ..... dated  
 the 8<sup>th</sup> day of Feb 1892, with its certificate of authentication, was filed for Record  
 in my office, this 8<sup>th</sup> day of Feb A. D. 1892 at ..... o'clock ..... M., and  
 duly Recorded the 6<sup>th</sup> day of June A. D. 1892 at 5 o'clock P M.,  
 in the Deuel Records of said County, in Vol 3 on Page 365 to 369

Witness my hand and the seal of the County Court of said County, at office in  
Jasosa Texas, the day and year last above written.

O. B. Bower  
 Clerk County Court, Oldham County.

By ..... Deputy. J. P.

Filed for  
Records Feb 8<sup>th</sup> 1892  
C. W. Bauer  
Cochran  
Oldham Co  
Tex

Filed June 21<sup>st</sup> 1892

North Bay Line

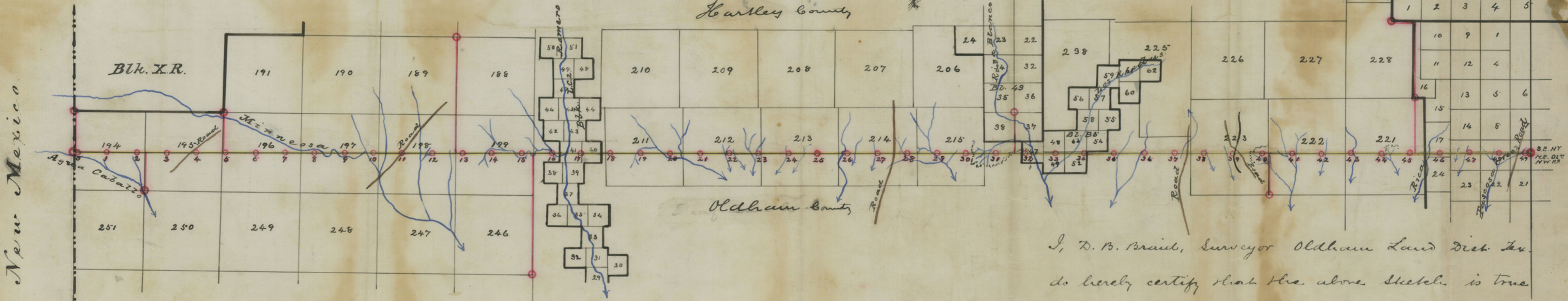
Oldham Co  
Oldham Co Bag Line

count 5744

Oldham Co. Bag Line

Sketch shewing the North  
Boundary Line of Oldham  
County, Texas, accompanying  
Field Notes.

Scale 4000 ft = 1 inch



New Mexico

194  
195  
196  
197  
198  
199  
200  
201  
202  
203  
204  
205  
206  
207  
208  
209  
210  
211  
212  
213  
214  
215  
216  
217  
218  
219  
220  
221  
222  
223  
224  
225  
226  
227  
228  
229  
230  
231  
232  
233  
234  
235  
236  
237  
238  
239  
240  
241  
242  
243  
244  
245  
246  
247  
248  
249  
250  
251  
252  
253  
254  
255  
256  
257  
258  
259  
260  
261  
262  
263  
264  
265  
266  
267  
268  
269  
270  
271  
272  
273  
274  
275  
276  
277  
278  
279  
280  
281  
282  
283  
284  
285  
286  
287  
288  
289  
290  
291  
292  
293  
294  
295  
296  
297  
298  
299  
300  
301  
302  
303  
304  
305  
306  
307  
308  
309  
310  
311  
312  
313  
314  
315  
316  
317  
318  
319  
320  
321  
322  
323  
324  
325  
326  
327  
328  
329  
330  
331  
332  
333  
334  
335  
336  
337  
338  
339  
340  
341  
342  
343  
344  
345  
346  
347  
348  
349  
350  
351  
352  
353  
354  
355  
356  
357  
358  
359  
360  
361  
362  
363  
364  
365  
366  
367  
368  
369  
370  
371  
372  
373  
374  
375  
376  
377  
378  
379  
380  
381  
382  
383  
384  
385  
386  
387  
388  
389  
390  
391  
392  
393  
394  
395  
396  
397  
398  
399  
400  
401  
402  
403  
404  
405  
406  
407  
408  
409  
410  
411  
412  
413  
414  
415  
416  
417  
418  
419  
420  
421  
422  
423  
424  
425  
426  
427  
428  
429  
430  
431  
432  
433  
434  
435  
436  
437  
438  
439  
440  
441  
442  
443  
444  
445  
446  
447  
448  
449  
450  
451  
452  
453  
454  
455  
456  
457  
458  
459  
460  
461  
462  
463  
464  
465  
466  
467  
468  
469  
470  
471  
472  
473  
474  
475  
476  
477  
478  
479  
480  
481  
482  
483  
484  
485  
486  
487  
488  
489  
490  
491  
492  
493  
494  
495  
496  
497  
498  
499  
500

I, D. B. Braith, Surveyor Oldham Land Dist. Tex.  
do hereby certify that the above sketch is true  
& correct, that the survey was made on the ground  
and that the corners are marked as shewn.

Jacobsa 8<sup>th</sup> Feb. /92.

D. B. Braith  
Surveyor  
Oldham Land Dist.  
Texas.

THE STATE OF TEXAS,  
County of Oldham

W. B. Bourn, County Clerk

in and for said County, do hereby certify that the foregoing  
the 8th day of Sept 1890  
in my office, this 29th day of May 1890 at 10 o'clock  
duly recorded the Deed of Wm. B. Bourn A. D. 1890 at 4 o'clock  
in the Deed Records of said County, in Vol 370 M.,  
on page 370

Witness my hand and the seal of the County Court of said County, at office in  
Texas, the day and year last above written.  
W. B. Bourn Clerk County Court,  
Deputy.

and that the corners are marked as  
shown on the plat  
I, R. B. Bourn, Surveyor Oldham County  
do hereby certify that the above plat  
is correct, that the survey was made



Oldham Co Bdry Line is  
N. body line  
Oldham Co

Oldham County

Scale 4000 ft = 1 inch

Sketch showing the location  
Boundary line of Oldham  
County, Texas, accompanying  
this plat.

W. B. Bourn

Filed for record  
May 29 1890  
W. B. Bourn  
County Clerk  
Oldham Co  
Texas