

1 Field notes of the East boundary line
2 of Oldham County, Texas; and the
3 West boundary line of Potter County
4 Texas; -

5 Beginning at a large rock set in
6 ground marked S.E. H^r N.E. O^m. and N.W. P^s.
7 which was set for the S.E. cor. of Hartley
8 Co. Texas; it being also the N.E. cor.
9 of Oldham Co. and N.W. cor. Potter
10 County.

11 Hence South at 1 mile set rock in ground m^kd 1

12 at 2 miles set rock in ground m^kd 2

13 " 3 " " " " " " 3

14 " 4 " " " " " " 4

15 " 5 " " " " " " 5

16 " 6 " " " " " " in prong

17 of Casino creek m^kd 6

18 " 6 m^s + 525 vs. cross prong Casino creek.

19 " 6 " + 1180 " " main " "

20 " 6 " + 1360 " " " " "

21 " 7 miles set rock in ground m^kd 7

22 " 7 " + 110 cross Casino creek

23 " 7 " + 440 " road

24 " 8 " set rock in ground m^kd 8

25 " 8 " + 44 vs. a bearing stone m^kd X;

26 (as called for from second south west
27 corner of sur. No. 106 Blk 47 Potter
28 County which cor is 38 vs. West
29 of the mouth of Casino creek) vs.
30 East 995 vs.

31 at 8 miles + 389 vs. said second west

32 cor. of sur. 106 Blk 47 Potter Co

lvs.

THE STATE OF TEXAS,

County of Oldham } I, W. A. Sawyer, County Clerk
 in and for said County, do hereby certify that the foregoing Instrument dated
 the 9th day of May 1892, with its certificate of authentication, was filed for Record
 in my office, this 23 day of May A. D. 1892, at _____ o'clock _____ M., and
 duly Recorded the 4th day of June A. D. 1892 at _____ o'clock _____ M.,
 in the Durd Records of said County, in Vol. 3 on Page 352 to 357

Witness my hand and the seal of the County Court of said County, at office in
Joscoar, Texas, the day and year last above written.

W. A. Sawyer
 Clerk County Court, Oldham County.
 By _____ Deputy. Fox

8
9
10
11
12
13
14
15
16
17

2

Fried notes
the East boundary
of Oldham Co
and
west boundary
of Potter Co
Texas
I did for
Record May 23rd 1892
W. A. Sawyer
Deputy

The surveys through
which the body of them
are not called for
or distance given
to corners -
8/1/92
Instrument
David B. Braid
Surveyor
April 1892
The enclosed statement of 8 body lines of
them correct & is approved by Com. Clerk -

Oldham Co Bar Line 1c

East Boundary Line
Filed June 21st 1892

There is no evidence
in this office that
Potter Co was ever
by notified, or that
the surveys of Potter
assisted in surveying
this County boundary -
W. A.
7/20/99

See F. H. 29, Plat filed
5/6/31 - Clerk

LEGHORN ABSTRACT
 FROM GEO. D. BARNARD & CO
 ST. LOUIS.

1 brs. East 1294 vs.
 2 at 8 mls. + 524 vs. the north side of
 3 Canadian River
 4 at 8 " + 1320 " the south bank Canadian "
 5 at 8 " + 1725 " cross the Ft. Worth and
 6 Denver Railroad 1440 vs. West of
 7 the mill post marked F.W. 366: D. 438.
 8 at 9 miles set rock in ravine mtd 9
 9 at 10 " mtd + circular trench
 10 at 10 " + 2000 vs cross road.
 11 at 11 miles large mound
 12 " 12 " made large mound
 13 " 13 " set rock in ground mtd 13
 14 " 14 " " " " " " 14
 15 " 15 " " " " " " " "
 16 " 15" + 400 vs cross creek.
 17 " 15" + 1240 cross Sierra La Cruz cr.
 18 " 16" set rock in ground mtd 16
 19 " 16" + 310 vs. at 16 mls + 800 vs. + at 16 miles
 20 + 1860 vs cross creek.
 21 " 17" set rock in ground mtd 17
 22 " 17" + 900 vs cross creek.
 23 " 18 miles set rock on edge of prong of cr.
 24 at 18" + 1618 vs. top of bluff
 25 at 19" set rock in ground mtd 19
 26 at 20" " " " " " 20
 27 " 20" + 500 vs. edge of Bluff.
 28 " 20" + 980 " cross road.
 29 " 21" set rock in ground mtd 21
 30 " 22" " " " " " 22
 31 " 23" " " " " " 23
 32 " 23" + 940 vs cross Tascosa and

Frying Pan

Frying Pan road.

at 24 mls. set rock in ground noted 24

" 25 " " " " " " 25

" 25" + 1105' a monument, the N.E.
corner of sur. No. 10 Blk 145
brs. W. 11885 vs.

at 25 mls + 1265 vs edge of Staked Plains

" 26 " set rock in ground noted 26

" 27 " " " " " " 27

" 28 " " " " " " 28

" 29 " " " " " " 29

" 30 miles set two large rocks
in ground, inside a large
circular trench, the N. rock noted
S.E. OLD^M, & S.W. POT^R. and the S. rock
marked N.E.D.S.; for the S.W. cor. of
Potter Co., S.E. cor. of Oldham Co
and N.E. cor. of Deaf Smith Co.
also the N.W. cor. of Randall Co. Tex.

I. D. B. Braid, Surveyor of Oldham
Land Dist. Texas, do hereby
certify that the above and fore-
going Field notes are true and
correct, that the survey was
made on the ground, and that
the limits, boundaries, & corners,
natural and artificial, are fully
described in the accompanying
Sketch and foregoing Field notes

D. B. Braid
Surveyor

Oldham Land Dist
Texas.

Lascosa }
9th May 1892 }

THE STATE OF TEXAS,

County of Oldham I, W. B. Sawyer, County Clerk
in and for said County, do hereby certify that the foregoing
the 9th day of May 1894 with its certificate of authentication, was filed for Record
in my office, this 23 day of May A. D. 1894 at 10 o'clock A. M., and
duly Recorded the 23 day of June A. D. 1894 at 4 o'clock A. M.,
in the Smith Records of said County, in Vol 3 on Page 356

Witness my hand and the seal of the County Court of said County, at office in
Doscoed, Texas, the day and year last above written.

W. B. Sawyer
Clerk County Court, Oldham County.

By _____ Deputy. Fix

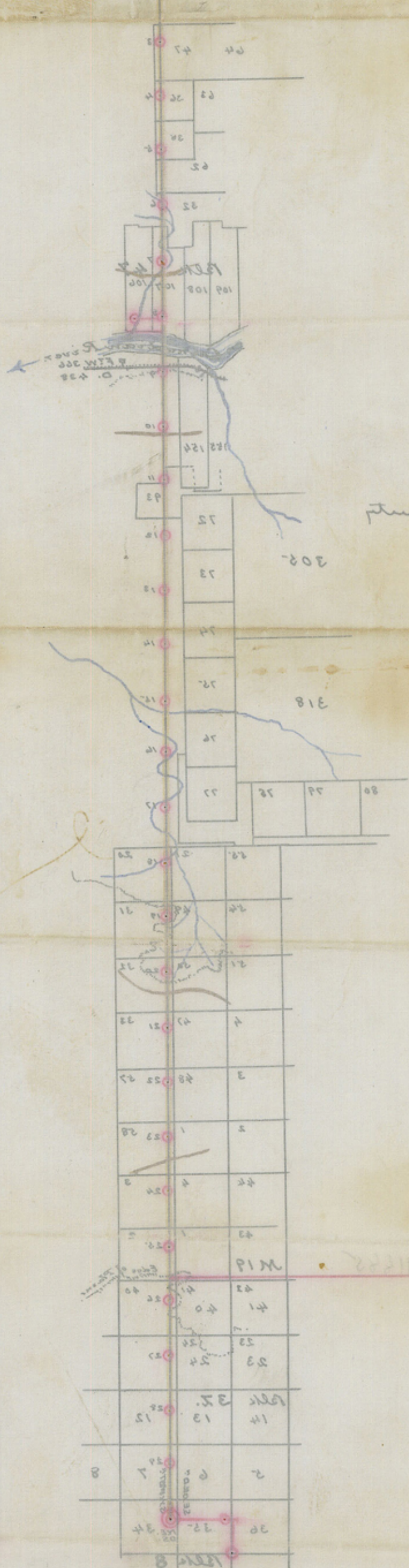
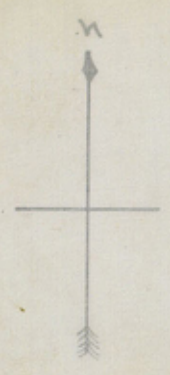
*Filed for recd
Apr 23^d day
May 23^d 1894
at 10 o'clock
A.M.
W.B. Sawyer
County Clerk
Oldham Co Tex*

*Oldham Co
Oldham*

1	2	4
7	8	4
12	55	55

*1894
2681*

5758



Peter County

Oldham County

*L. H. ...
Texas; do hereby certify that the above ...
is true and correct, and that errors are ...
on the ground, and that errors are ...
as shown.
Dated at ...
Oldham County, Texas
W. B. Sawyer
County Clerk*