

FIELD NOTES.

Beginning at the N.W. Cor. of Parker County. Stone 3" high set in ground, the bearings to the P.O. which is still standing and stump of mesquite with marks as called for, to be found the corner fully identified by the calls it is in the S.E. 1/4 of the Texas Emigration & Land Co. survey No. 2568 the S.E. Cor. of which survey brs. S. 81 1/4 E. 455 vrs.

1st Mile - Thence West at 300 vrs. pass a large P.O. marked with three hacks on North side, for a line tree on old line, at 902 vrs. West line of T. E. & L. Co. survey No. 2568 ~~300~~⁷⁶ vrs. North of its S.W. Cor. 6 acres of said ^{Survey} land in Parker County, 13 acres in Palo Pinto, and 311 acres in Jack County At 1900 vrs. stone set in ground for first mile post. Marked-I-P.P.C. in ~~W~~ South side and ^{J.C.} IX on North side.

2nd mile - Continuing West at 354 vrs. West line of T. E. & L. Co. survey No. 2567, 105 vrs. North of its S.W. Cor. 23 acres of said survey in Palo Pinto Co. and 297 acres in Jack County, at 935 vrs. cross branch, at 1607 vrs. West line of T. E. & L. Co. survey No. 2566 122 vrs. North of its S.W. Cor. 27 acres of said survey in Palo Pinto County and 293 acres in Jack County, at 1900 vrs. set stone in ground for the 2nd mile, marked on North side J.C. X and on South side P.P.C. II.

3rd mile - Continuing West at 1158 vrs. West line of T. E. & L. Co. survey No. 2565, 158 vrs. north of its S.W. Cor. 31 acres of said land in Palo Pinto County and 289 acres in Jack County. 1900 vrs. set stone in ground for 3rd mile, marked on Northside XI J.C. and on South side P.P.C. III.

4th mile - Continuing West at 610 vrs. West line of T. E. & L. Co. survey No. 2564, 158 vrs. North of its S.W. Cor. 36 acres of said land in Palo Pinto County and 284 acres in Jack County, at 1175 vrs. cross branch, at 1240 vrs. leave branch, at 1366 cross same branch/ 1900 vrs. set stone in ground for 4th mile marked on Southside P.P.C. IV and on North side XII J.C.

5th mile - continuing West at 62 vrs. West line of the T. E. & L. Co. survey No. 2563 176 varas North of its S.W. Cor. 40 acres of said survey in Palo Pinto and 280 acres in Jack County, at 810 vrs. East ^{73 banks} Keechi Creek, 835 vrs. West bank of same, at 1414 vrs. West line of T. E. & L. Co. survey No. 2562 194 vrs. North of its S.W. Cor. 44 acres of ~~1/2~~ said land in Palo Pinto County and 276 acres in Jack County, at 1742 vrs. cross branch. 1900 vrs. stake 4" square 5th mile marked on North side XIII J.C. and on South side P.P.C. V, double P.O. marked ^{J.C.} brs. N. 22 1/2 E. 34 vrs. and a P.O. marked ^{P.P.} brs. S. 29 W 50 vrs.

6th mile - Continuing West at 350 vrs. small draw, at 866 vrs. West line of T. E. & L. Co. survey No. 2580 in Jacksboro and Mineral Wells road, 212 vrs. North of its S.W. Cor. 49 acres of said survey in Palo Pinto County and 271 acres in Jack County. 1900 vrs. stone set in ground for six miles marked on North side XIV J.C. and on South side P.P.C. VI.

THE W. H. HARRIS
LAND & CO. SURVEYORS

7th mile - Continuing West at 318 varas West line of T.E. & L. Co. survey No. 258I 229 varas North of its S.W. Cor. 53 acres of said land in Palo Pinto County and 267 acres in Jack County, at 368 varas cross branch. 1900 varas set stone in ground for 7th mile marked on North side J.C. XV. and on South side VII P.P.C.

8th mile - Continuing West at 1175 varas branch. 1900 varas set stone in ground for 8th mile marked on North side J.C. XVI and on Southside P.P.C. VIII.

9th mile - Continuing West at 60,75 and 125 varas cross same branch, at 527 varas branch, at 1474 varas West line of the W.P. Kinkenon survey 206 varas North of its S.W. Cor. 1310862 square varas in Palo Pinto County and 11774-230 square varas in Jack County, at 1760 varas top of bluff or ridge. 1900 varas set stone in ground for 9th mile marked on North side J.C. XVII and on South side P.P.C. IX.

10th mile - Continuing West at 1616 varas cross West line of F.M. Hawks survey No. 12 321 varas North of its S.W. Cor. leaving 111 1/2 acres in Palo Pinto County and 465 acres in Jack County, at 1875 varas ^{top} ~~Pile~~ ^{Bluff} of stone (at 1900 varas) ^{Pile of stone} for 10th mile one stone on North side marked J.C. XVIII and one on South side P.P.C. X.

11th mile - Continuing West at 1008 varas cross west line of F.M. Hawks survey No. 2, now the D.W. Rider school survey. At 338 varas North of its S.W. Cor. leaving ~~474 1/2~~ 751/2 acres of said land in Palo Pinto County and 501 acs. in Jack County. 1900 varas 11th mile stone set in ground in P. ~~On~~ timber in East edge of Keechi Valley marked on North side ^{XIX} J.C. and on South side P.P.C. XI.

12th mile - Continuing West at 200 vrs. centre of Jacksboro and Palo Pinto road, at 418 varas East bank of Keechi Creek, at 468 varas West bank of same at 942 varas West edge of Keechi Valley, at 1125 varas top of Bluff, at 1439 varas West line of Isham McMullam survey, ~~47~~ 369 varas North of its S.W. Cor. leaving 99 acres of said land in Palo Pinto County and 221 acra in Jack County. 1900 varas 12th mile stone set in prairie with stones piled around it. One on North side marked J.C. XX and one on South side P.P.C. XII.

13th mile - Continuing West at 320 varas branch, at 405 varas branch, at 907 varas West line of G.W. Wakefield survey, 386 varas North of its S.W. Cor. leaving 91 1/2 acres of said land in Palo Pinto County and 138 1/2 acres ^{Jack County} At 1863 varas S.W. Cor. of Ira E. Graves Survey. All said land in Jack County in Jack County? 1900 varas set stone in open prairie for 13th mile marked on North side J.C. XXI and on South side P.P.C. XIII.

14th mile - Continuing West at 982 varas West line of I. & G.N.R.R. Co.

survey 412 varas North of its S.W. Cor. 73 acres of said land in Palo Pinto and 172 acres in Jack County. 1900 varas 14th mile stone set in prairie marked on North side J.C. XXII and on South side P.P.C. XIII.

15th mile Continuing West at 165 varas branch, at 744 varas West line of the E.B. ~~73~~ Davis survey 434 varas North of its S.W. Cor. leaving 124 1/2 acres in Palo Pinto County and 515 acres in Jack County. At 971 varas West line of M.B. Lloyd survey 437 varas North of its S.W. Cor. leaving 17 1/2 acres of said survey in Palo Pinto County and 244 1/2 acres in Jack County, at 1285 varas branch at foot of hill, at 1625 varas top of hill, East edge of Dillingham Prairie. 1900 varas 15th mile stone set in ground in said Prairie marked on North side J.C. XXIII and on South side P.P.C. XV.

16th mile - Continuing West at 231 varas West line of B.B.B. & C. R.R. Co. survey 452 varas North of its S.W. Cor. leaving 93 acres of said survey in Palo Pinto County and 547 acres in Jack County. 1900 varas 16th mile stone set in ground marked on North side J.C. XXIV and on South side P.P.C. XVI.

17th mile - Continuing West at 246 vrs. West line of W.F. Wells survey 477~~8~~ North of its S.W. Cor. leaving 157 1/2 acres of said land in Palo Pinto Co. and 482 1/2 acres in Jack County Texas. At 1598 varas West line of T.E. & L. Co. survey No. 851 495 varas North of its S.W. Cor. leaving 11 ^{Acres} ~~6 varas~~ of said land in Palo Pinto County and 204 acres in Jack County. 1900 varas 17th ~~th~~ mile stone set in Open Prairie marked on North side J.C. XXV and on South side P.P.C. XVII.

18th mile - Continuing West at 1050 varas West line of T.E. & L. Co. survey No. 852 512 varas North of its S.W. Cor. leaving 121 acres of said land in Palo Pinto County and 199 acres in Jack County. At 1410 varas draw, at 1900 varas 18th mile stone set in ground marked on North side J.C. XXVI and on South side P.P.C. XVIII.

19th mile - Continuing West at 502 varas West line of T.E. & L. Co. survey No. 853 530 varas North of its S.W. Cor. leaving 124 3/4 acres of said land in Palo Pinto County and 195 1/4 acres in Jack County. At 1150 varas draw, at 1850 varas West line of T.E. & L. Co. survey No. 854 548 varas North of its S.W. Cor. leaving 129 acres of said land in Palo Pinto County and 191 acres in Jack County. 1900 varas 19th mile stone set in open prairie marked on North side J.C. XXVII and on South side P.P.C. XIX.

20th mile - Continuing West at 1100 varas branch, at 1306 varas West line of T.E. & L.Co. survey No. 855 565 varas North of its S.W. Cor. leaving 132 acres of said land in Palo Pinto County and 188 acres in Jack County. 1900 varas 20th mile stone set in Shinery on brakes of Rock Creek marked on North side J.C. XXVIII and on South side P.P.C. XX.

21st mile Continuing West at 128 varas branch in deep ravine, at 758 varas West line of A.B. & M. survey No 1,762 varas South of its N.W. Cor. leaving 456 acres of said land in Palo Pinto County and 184 acres in Jack County AT 1900 varas 21st mile stone set in Valley of Rock Creek stake in P.O. timber marked on North side P.P.C. XXVIII and on South side P.P.C. XX.

22nd mile - Continuing West at 225 varas Rock Creek, at 337 varas top of bluff, at 1193 varas intersect East line of Young County at 380 varas South of the 3rd mile post on said line and 18 varas East of a point on the N.E. line of B.B.B. & C.R.R. Co. survey No. 6 310 varas N. 45 W. from the East Cor of same. Stone set in ground marked N.W.P.P. and S.W.J. with stones piled around it from which a P.O. marked P.P. brs. S. 71 1/4 varas and a P.O. marked P.P. brs. S. 67 1/4 W. 75 1/2 varas; leaving 87 acres of the Geo. Dedrick survey in Palo Pinto County and 1304 acres in Jack County the balance survey in Young County.

Surveyed Aug 26-27-28-29- and 31-1904 with variation of 8° 30' East

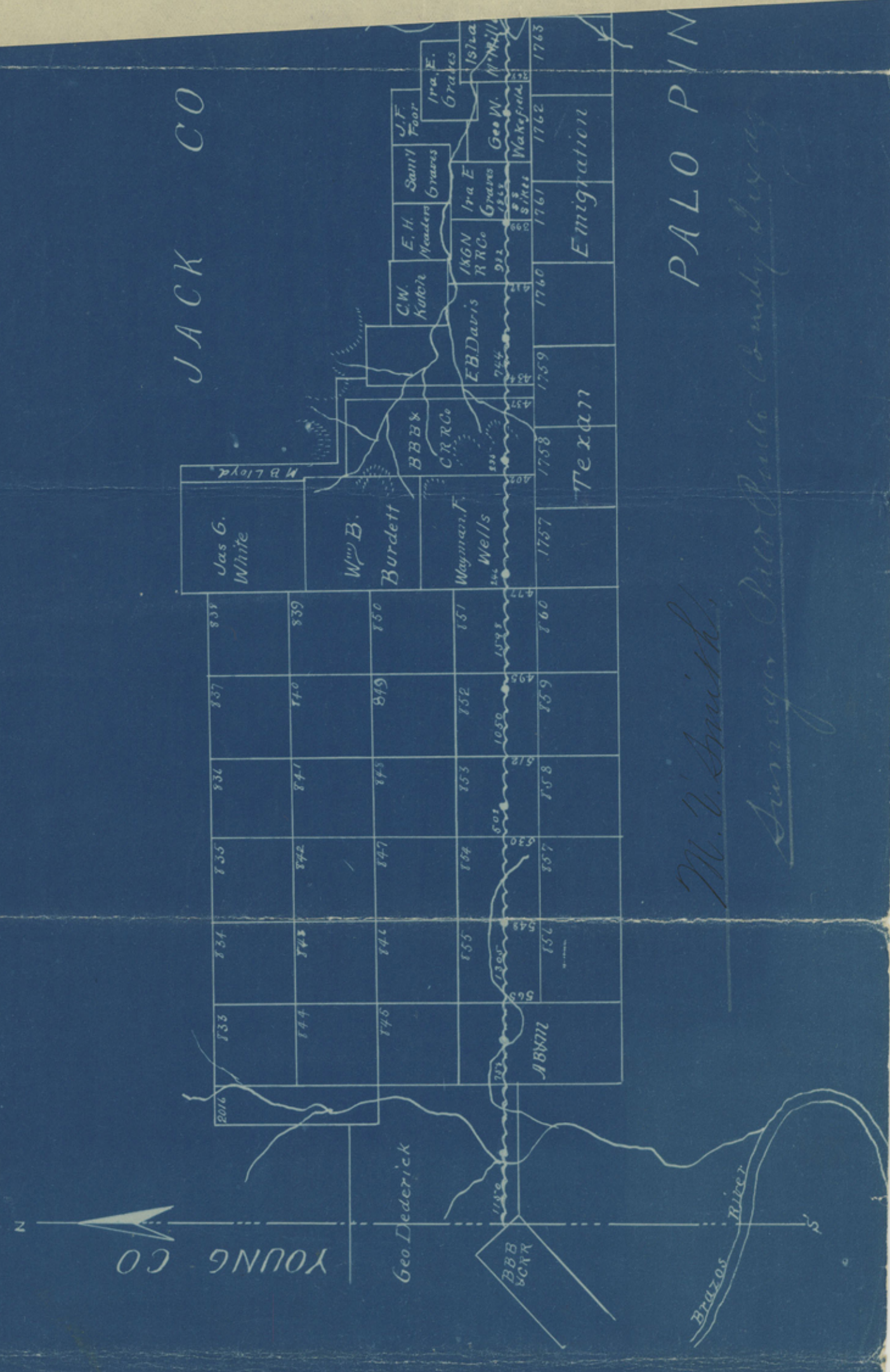
R. K. Stewart)
 H. B. Hensley) Chain carriers.
 Hampden Spiller, Front Flagman.
 Frank N. McClure, Back Flagman.

by Geo. Spiller and M. V. Smith surveyors of Jack and Palo Pinto Counties respectively

We the undersigned surveyors of Palo Pinto and Jack Counties respectively do hereby certify that the survey of the Boundary Line between Jack and Palo Pinto Counties as represented by the foregoing field notes was made by us on the ground according to law and the description as given in said field notes are found on the ground and are correctly described in said field notes and are truly shown on the accompanying sketch.

*M. V. Smith
 Surveyor of Palo Pinto County
 Geo. Spiller
 Surveyor of Jack County*

Count 59803

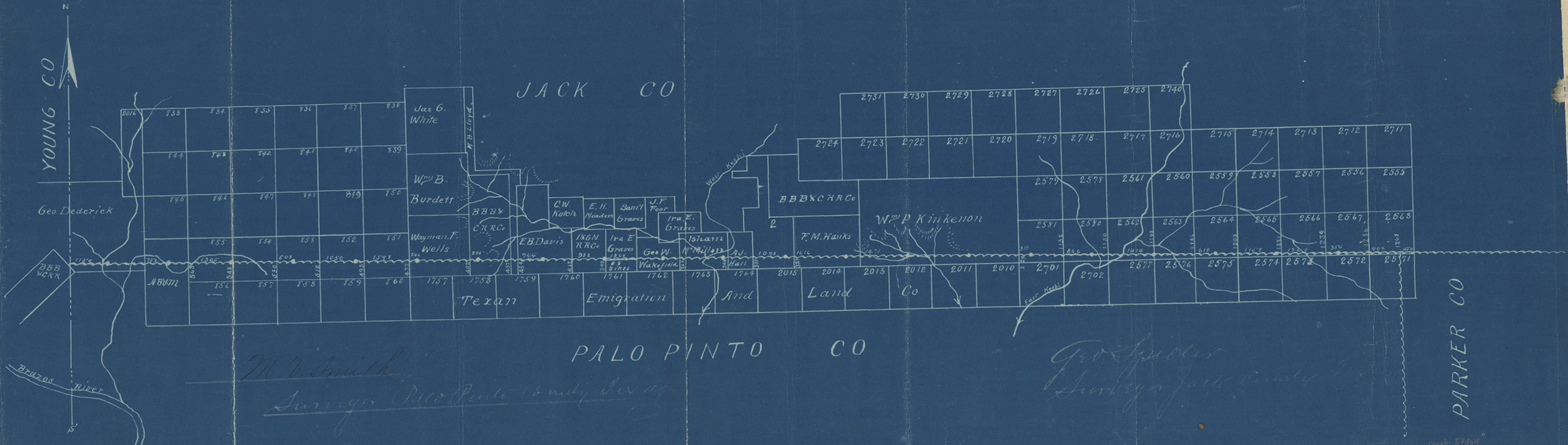


YOUNG CO

JACK CO

PALO PINTO CO

PARKER CO



W. V. Smith
 Surveyor Palo Pinto County Texas

Geo. Spiller
 Surveyor Jack County Texas

Cont'd 57804

LAND LOAN COMPANY,
 JACKSBORO, TEXAS

STATE OF TEXAS))

COUNTY OF JACK)

Be it remembered that we, the County Judge and

County Commissioners holding the Commissioners Court of Jack County

do hereby certify that we have this day in open Court examined and approv-

ed of the foregoing and attached field notes and plat of the survey of

the Boundary line between Jack and Palo Pinto Vountjes as made by Geo.

Spiller and M. W. Smith surveyors of the respective Counties.

This 22 Day of Nov. 1904.

Sil Stark
County Judge Jack County Texas.

M. A. Gross
Commissioner Precinct No. 1, Jack County

J. H. Rogers
Commissioner Precinct No. 2, Jack County.

ATTEST

Wm. J. Jones
County Clerk, Jack County

J. A. Raley
Commissioner Precinct No. 3, Jack County.

G. M. Vance
Commissioner Precinct No. 4, Jack County

STATE OF TEXAS)

COUNTY OF JACK)

I, S. L. Leeman Clerk of County Court of Jack County T

Texas do hereby certify that the foregoing and attached field notes

and plot together with the attached certificate of the Boundary Line

between Jack and Palo Pinto have been recorded in Vol 11 Pages of

the records of the Commissioners Court of Jack County Texas. as given in

said field notes and

In Testimony whereof I have hereunto set my hand and official seal
at Jacksboro the Day of 1904.

M. V. Smith
County Clerk of Jack County Texas

Geo. Spiller
M. W. Smith
Surveyors of Jack County Texas

To the Commissioners Court of Jack and Palo Pinto Counties Texas.

Whereas there was a certain order promulgated by the Commissioners Court of Jack County Texas authorizing and directing Geo. Spiller Surveyor of said Jack County Texas to run and establish the Boundary Line between the Counties of Jack and Palo Pinto which order is duly recorded in Minute Book Page in the minutes of the Commissioners Court of Jack County Texas.

And whereas a copy of said order was duly and legally ~~served~~ served on the Commissioners Court of Palo Pinto County Texas as required by Article 802 of the revised Civil Statutes of the State and said Commissioners Court of Palo Pinto County acting upon said notice ~~and order passed on~~, entered an order which is duly recorded in Minute Book Page of the Minutes of the Commissioners Court for Palo Pinto County ~~Tex~~ Texas authorizing and appointing and directing M. V. Smith Surveyor of Palo Pinto County to proceed and assist in running and establishing said Line as required by Law;

Therefore in obedience to said mentioned orders we Geo. Spiller and M. V. Smith met at the appointed place to wit; The North West Corner of Parker County on the South line of Jack County and proceeded to run, survey, measure, mark, and establish said Boundary Line between the said Counties of Jack and Palo Pinto as required by Law and specified and designated in above named orders and now ^{by} leave to submit to said Courts the following field notes and plat ^{of} said Line.

STATE OF TEXAS

COUNTY OF PALO PINTO

Be it remembered that we, the County Judge and Co. Commissioners holding the Commissioners Court of Palo Pinto County do hereby certify that we have this day in open Court examined and approved of the foregoing and attached field notes and plat of the survey of the Boundary Line between Jack an Palo Pinto Counties as made by Geo. Spiller and M. V. Smith surveyors of the respective Counties.

This 15 Day of Nov. 1904.

E. B. Ritchie

County Judge of Palo Pinto Texas.

S. J. S. Abernathy

Commissioner Precinct No. 1, Palo Pinto Co

ATTEST

[Signature]

County

B. J. Whiteaker

County Clerk Palo Pinto Commissioner Precinct No. 2, Palo Pinto County.

J. P. Brawder

Commissioner Precinct No. 3, Palo Pinto County

L. L. Spithers

Commissioner Precinct No. 4, Palo Pinto County

STATE OF TEXAS

COUNTY OF PALO PINTO

I, *Geo. M. Kealy*

Clerk of County Court of

Palo Pinto County Texas do hereby certify that the foregoing and attached field notes and plat together with the attached certificate of the Boundary Line between Palo Pinto and Jack Counties have been recorded in Vol 33 Pages 278 of the records of the ^{Seeds} Commissioners Court of Palo Pinto County Texas.

In Testimony whereof I have hereunto set my hand and official seal at Palo Pinto this 21 Day of Aug 1906

Geo M Kealy

County Clerk of Palo Pinto County Texas

THE STATE OF TEXAS,

County of Jack

I, *Wm Turner*

Clerk of the County Court of

said County, do hereby certify that the foregoing instrument, of writing, dated on the..... day of.....

A. D. 190..... with its certificate..... of Authentication, was filed for record in my office, this..... day of

Sept A. D. 1906 at *8* o'clock..... M. and duly recorded this *14* day of *Sept*

A. D. 1906 at *6* o'clock..... P. M. in the Deed Records of said County, in Volume *40*

on pages.....

WITNESS my hand and the seal of the County Court of said County, at office in Jackshoro the day and year last above written.

Wm Turner

Clerk, County Court Jack County, Texas.

By..... Deputy.

Field notes
*Part of **
Boundary Line
from Palo Verde
County

Palo Verde Co Bary Line 3

THOS. D. SPORER,
ATTORNEY AT LAW,
JACKSBORO, TEXAS.

County 5988
Palo Verde Line # 3

Delega.
ne 13th 1810

Pedro José
Esparza
T. May 13th 1810

Isaiah Kirby

Ramires

River

ptd

Conto 57819

Delores Corinas
T and N.O.R.R.

A.H. Edwards

ptd

Eunice Butler ptd

W.T. Martin ptd

John Armstrong ptd

Mary Pike ptd

John W. Martin ptd

John Brown ptd

Nathan W. Gann ptd

S. Coastleberry ptd

John P. ptd

Wm. H. M. Payton ptd

John P. ptd

Wm. Frisby ptd

Juan Billareal ptd

Juan Mora ptd

George S. Hyde

Nenomicery de la Corda

A.P. Montes ptd

Juan Gonzalez ptd

W. Collins ptd

Luis Zona ptd

Charles Hotchkiss ptd

J.P. Chertino ptd

Jos. Archer ptd

A. Hotchkiss ptd

P. Grimes ptd

W.C. Nations ptd

Andrés Bermea
T. July 29th 1835

ncenti Michelli
Pedro de Lara
T. Dec. 20th 1805

Joaquin's
ossing

Angelina

Bayou
La Nana

Genio

Jose Luis de la Hoya
(See old Maps)

J.S. Thor

John
Hilber

T.C.R.R.Co

4 ptd

6

5

"Kirby Highway" - see Prospect

Bayou
Mordal

L. Ramus ptd

A. Dewitz ptd

J.E. Tucker ptd

James Carter ptd

Palisada Spring

~~4~~

Jack-Palo Pinto
County Line

Sept. 18, 1906.

Palo Pinto Co Entry Line 3

1

Abstract corrected in
Abstract Vol. 31