

State of Texas,

County of Palo Pinto To the County Court of Palo Pinto and Stephens Counties. Whereas there was a certain order made and promulgated by the County Court of Palo Pinto County, Texas, on the 15th day of Oct. 1906, authorizing and directing M V Smith, Surveyor, of Palo Pinto County, Texas, to run and establish the boundary line between Palo Pinto and Stephens Counties, which order is duly recorded in Minute Book No 3 page 97, Minutes of the County Court of Palo Pinto County, Texas.

And whereas a copy of said order was duly and legally served on the County Court of said Stephens County as required by Art. 802 Sayles Revised Statutes of Texas.

Therefore in obedience to said order, I, M V Smith, Surveyor, proceeded to the place mentioned and appointed for the beginning to-wit, the N W Corner of Palo Pinto County and the Stephens County, on the South boundary line of Young County, which is thoroughly identified as the original N W Corner of Palo Pinto by the original marks and bearing trees, and thence proceeded to run, lay out, mark and establish said boundary line between said Palo Pinto and Stephens Counties, as required by law, and as specified and required in the above mentioned orders, and now here submit to said Courts the following field notes and plat of said line as follows, to-wit:--

Palo Pinto Bdry Line As

BEGINNING at an old stone corner in the S line of Young County which is marked on one side N W Cor. P P Co., and on the other side N E Cor S C & L O (old Wit) Mrkd $\frac{X}{X}$ brs S 40 Degrees 38 Min. E 216-4/5 vrs. This Corner is 262 vrs E of the N W Cor of the James Finley Survey and in the N line of same.

1st Mile. Thence South with an old line 75-2/5 vrs pass rock mkd S L Y C on N side, N W C P P Co on the East side and N E C S C Co on the West side at 1900-3/5 vrs 1 mile post, an old stone mkd 1 mi P P C & S C from which a small L O (old wit) mkd XIX brs N 38 1/2 E 6-2/5 vrs.

2nd. Running South at 160 vrs the South line of the Finley Survey and N line of Susan Latham Sur. 262 vrs E of the N W and S W Corners of same surveys; 88 acres of the Finley Sur is in Stephens Co; at 1903 vrs pass 2 mile post old stone mkd 2 m P P & S C, found stump of old bearing with one X on it.

3rd. Running S at 1140 vrs a ravine at 1240 vrs creek, at 1340 vrs branch, at 1600 vrs the N edge of a rocky point, at 1910 vrs the 3 mi post- an old stone mkd 3 m P P C & S C.

4th. Running South 228 vrs cross the South line of Susan Latham Sur. 246 vrs East of her S W Cor; 157 acres in Stephens County, 1705-4/5 vrs the S line of the Gill Sur. 230 vrs E of the S W Cor of same; 42 acres of this Sur is in Stephens Co; at 1909 vrs the 4 mi post, Old stone mkd 4 m P P C & S C (Old wit. L O brs N 22 E 74 1/2 vrs, do brs N 22 1/2 E 76 vrs Elm brs S 12 1/2 W 45-3/5 vrs.

5th. Running South 805 vrs cross the S line of the Rodriguez Sur, (428 acres of this Sur is in Stephens Co,) at 1220 vrs cross Cedar br. 1298 vrs an old stone on the Ft. Griffin and Weatherford road, 1380 vrs Cedar Creek, 1952 vrs the 5 mi post old stone gone, found one Wit. set a stone marked 5 mi P P & S C from which old wit. mkd XIIIIIX brs N 11 W 33 vrs.

6th. Running South 640 vrs top of high hill, passing 210 vrs East of the S W Cor of the Wyatt Sur. (20-1/10 acres of No 2 in Stephens Co. and 47 acres of the Wyatt Sur. is in Stephens Co.) , at 1500 vrs cross head of Canyon a large Cedar mkd XXIIIIII; at 1922-2/5 vrs South brow of Canyon and 6 mi post old stone found mkd 6 mi, (old Wit a cedar mkd X6 hacks X brs N 11 W 14 vrs, do mkd same brs N 46 E 7 1/2 vrs.

7th. Running South pass 507 Vrs East of the most Southerly S W Cor of A B & M No 2, 314 acres of this Sur is in Palo Pinto County., at 1051 vrs cross the N line of No 4, 92 vrs W of its N E Cor (101 acres of A B & M No 5 is in Stephens Co,) at 1903-2/5 vrs the 7 mi post found old stone mkd 7 mi P P C & S C.

8th. Running South 1905 vrs, the 8 mi post, (31 acres of No 4 is in Palo Pinto County,) found old stone mkd 8 M P P C & S C from which "Old Wit" a L O mkd X 8 hacks X brs N 59 E 43-1/5 vrs a Mesq Old wit mkd same brs N 80 W 17-2/5 vrs.

9th. Running South 1034 vrs Cross the S line of No 2, (31 acres of this Sur is in Palo Pinto County,) at 1945 vrs the 9 mi post, pass 300 vrs E of the S W Cor of the Hughes Sur. (18-5/10 acres of this sur. is in Stephen County,), found old stone mkd 9 Mi P P C & S C.

10th. Running South 1870 vrs the 10 mi post , found stone mkd 10 mi from which old wit. a cedar mkd X 10 hacks X brs 2-3/5, do mkd same brs N 43 E 17 vrs.

11. Running South 149 vrs cross N line of No 2 T & P R R Co. 824 vrs N 84 E of the N W Cor of same. (33.4 acres of No 1 is in Stephens Co.) 1914-2/5 vrs the 11 mi post, found old stone mkd 11 mi P P C & S C L O old wit. mkd X 11 hacks X brs N 18 1/2 vrs, do mkd same N 20 E 33-3/5 vrs.

12. Running South crossed the N line of No 11 T & P R R Co Sur. 630 vrs N 84 E from N W Cor , -1840--was--the--12--mi--post--found 960 vrs center of branch, 1100 vrs center of ravine, 1940 vrs the 12 mi post, found old stone mkd 12 M P P C & S C from which a double Cedar (old wit.) mkd X 12 hacks, brs S 19 W 33 1/2 vrs an Elm (old wit.) mkd the same brs S 18 1/2 E 2-3/5 vrs.

13. Running South 54 vrs Bluff, 127 vrs cross the N line No 14/ 436 vrs N 84 E from the N W Cor, 270 vrs Center of Caddo Creek, 1040 vrs N bluff, deep ravine, 1920 vrs the 13 mi post, found old stone mkd 13 mi P P C & S C old bearings gone.

14. Running South 110 vrs the South line of No 14, 242 vrs N 84 E from S W (114 acres of this Sur is in Stephens Co.) , 1921 vrs the 14 mi post, found old stone mkd 14 Mi P P C & S C from which old wits. a L O mkd X 14 hacks X, brs S 36 W 88-3/5 vrs, do 8' mkd same brs N 56 E 64 vrs.

15. Running South 126-2/5 vrs the S line of No 23,66-2/5 vrs N 84 E of the S W Cor. (49 acres of this Sur is in Stephens Co. 1260 vrs the N bank of Little Caddo, 1920 vrs the 15 mi post, found old stone mkd 15 m P P C & S C from which a L O (old wit.) mkd X 15 hacks X brs S 9½ E 52 vrs, do mkd same brs N 5½ E 46 vrs.

16. Running South 517 vrs cross the S line of 27, 128 vrs S 84 W from S E Cor . (14 acres of No 27 is in Palo Pinto County), at 880 vrs the P P & B road, 1920 vrs the 16 mi post, a flat rock on side of hill from which a L O (old wit.) mkd X 16 hacks X brs N 5½ W 43 vrs.

17. Running South cross the S line No 34, 322 vrs S 84 W from the S E Cor of same.(79 acres of this Sur is in Palo Pinto County) at 1910 vrs the 17 mi post, found old stone mkd 17 m P P & S C from which old wit. a L O Mkd X 17 hacks X brs N 54½ W 23 vrs.

18 Running South crossing the S line of No 39, 516 vrs, S 84 W from S E Cor of same.(144 acres of this Sur is in Palo Pinto County?) 1800 vrs the 18 mi post not found, set a stake in field.

19 Running South, crossed the S line of No 46, 710 vrs S 84 W of the S E Cor of same.(209 acres of this sur is in Palo Pinto Co) at 1900 vrs found No Monument, at 1940 set the 19 mi post in rock prairie, a stone mkd 19 m P P C & S C, took no bearings.

20. Running South crossed the S line of No 51, 904 vrs, S 84 W from S E Cor of same.(274 acres of this Sur is in Palo Pinto Co), at 200 vrs the N edge of rock bluff, at 320 vrs br 1680 vrs ,Ioni Creek, at 1740 vrs the 20 mi posta pecan stump from which a pecan (Old wit) mkd X20 hacks X brs S 47½ W 2-2/5 vrs, do mkd same (old wit) brs N 38 W 2vrs we set a Cedar post mkd P P C & S C.

21. Running South crossed the S line 58, 1098 vrs, S 84 W from the S E Cor of same.(339 acres of this Sur is in Palo Pinto County.) 1904-2/5 vrs NO 21 mi, found on N side of hill, old br. a l O on point of hill, mkd X 21 hacks X brs N 76 E about 200 vrs L O)(Old wit.) mkd same, brs N 54 E 184 vrs.

22. Running South, crossed the S line of 63, 1292 S 84 W from S E Cor same,(404acres of this sur is in Palo Pinto County) at 1926-2/5 vrs No 22 (mi) the old stone was not found, one bearing found. This Cor-

ner is in a branch. We set Cedar post mkd 22 M P P C & S C, old wit. an Elm brs N 7 W 20 vrs, New wit a Spanish Oak mkd X22 hacks X, brs N 43½ W 6-3/5.

23. Running South, crossed the S line of 70, 450 vrs N 84 E from the S W Cor of same. (469 acres of this Sur is in Palo Pinto County) at 1914 vrs the 23 mi post, old stone found mkd 23 m P P C & S C from which old wit. a L O Mkd X 23 hacks X brs N 48 W 28 vrs.

24. Running South, crossing the S line 75, 256 vrs N 84 E form S W Cor of s me. (534 acres of this sur is in Palo Pinto co.) at 1925 vrs the 24 mi post on top of a shining ridge, found the old stone mkd 24 m P P C & S C.

25. Running South crossed the N line of 88, 62 vrs S 84 W from its N W Cor. (~~599~~ 599 acres of Section 82 is in Palo Pinto County), at 1924 vrs the 25 mi post, found stone mkd 25 M P P C & S C, old wit. an Elm mkd X25 hacks X brs N 57 W 21 vrs, a L O (Old wit) mkd same brs S 39 W 52 vrs.

26. Running South at 1870 vrs cross the S line of No 93, 624 vrs N 84 E of the 1/2 mi Cor, at 1920 vrs 26 mi post, an old rock pile, a flat rock mkd P P C & S C from which an old wit. a cracked L O mkd X26 hacks X brs S 1½ E 40 vrs, do mkd same, brs S 13 E 40 vrs. (106 acres of Section 93 is in Palo Pinto County.

27. Running South 1619 vrs cross the N line of Fairbanks Sur. 14 vrs E of N W Cor and 51 vrs W of N E Cor. (27 acres of the H & G N R R Co. Sur No 1. is in Palo Pinto County.), at 1906 vrs the 27 mi post, old stone mkd 27 m P P C & S C.

28. Running S 347 vrs, the N W Cor of Satterfield Sur., 1706 vrs the S W Cor of same Sur., 1929-4/5 vrs the 28 mi post, old stone from which old wit. a L O Mkd X28hacks X brs S 3 W 185 vrs, do mkd same brs S 3½ W 185 vrs.

29. Running South at 1006 vrs the T & P R R 1110 vrs center of Palo Pinto Creek, 1673 vrs the S line of B B B & C R R Co. Sur 911-2/5 E of the S W Cor of same. (306 acres of this Sur is in Stephens Co) at 1931 vrs the 29 mi post old stone found mkd 29 mi P P C S C form which old wit. a Cedar ___ mkd X29hacks X brs S 1½ E 120 vrs.

Running South at 1939 vrs the old Cor of Palo Pinto County, a large stone resting on two mounds of stone mkd on the East End 30 m P P C on the West end S E C S C Nov 27, 1883, and on the South edge "E C ". this corner was further identified by two bearing trees mkd X30X. This corner is 38-2/5 vrs E of an old Cor. described in prior notes, also the notes as made by Eastland County to her North line. It is marked by a large stone mkd S E C S C and a P O bearing Call in the Eastland County field notes.

I found the West line thoroughly marked and every monument easily identified and my survey was so close to the Survey made by surveyors prior to me, I took the old mkd line together with the old monuments described in my notes as the true West Boundary line of Palo Pinto County, and the East boundary line of Stephens County. The needle registered near 9 Degrees East.

This Survey was begun the 12th day of December 1906 and closed the 27th day of December, 1906.

Seth Swift, and
Homer Blankenship. | Chain men.

George McQuerry, Head Flagman.

Joe Corbin, Back Flagman.

GIVEN under my hand at Palo Pinto, this 15 day of April A D 1907.

M V Smith

The State of Texas
Palo Pinto County

)
O
)

I, Geo Metcalfe, County Clerk in and
for said County and State, do hereby certify

that the above and foregoing is a true and correct copy of the report of survey and field notes of the West boundary line of Palo Pinto County, Texas as the same appears of record in Vol.40, page 66 of the Deed Records of Palo Pinto County, Texas.

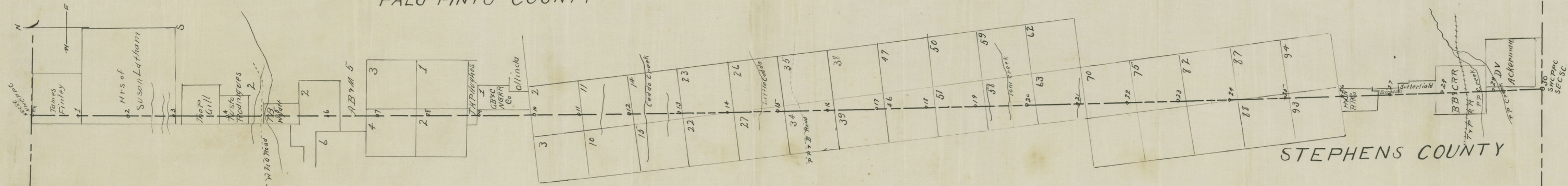
Witness my hand and official seal this the 11th day of July 1907.

Geo Metcalfe County Clerk

Palo Pinto County, Texas.

By J. P. Currijan Deputy.

PALO PINTO COUNTY



STEPHENS COUNTY

7

Western Line Palo Pinto

Palo Pinto Co Edry Line 4a

Counter 61709

U