

To the County Court of Palo Pinto, Erath and Eastland Counties, Texas:-

Whereas there was a certain order made and promulgated

on the 15 day of Oct 1906,

by the County Court of Palo Pinto County, Texas, authorizing and directing M V Smith, Surveyor, of Palo Pinto County, Texas, to run and establish the boundary line between Palo Pinto and Erath and Eastland Counties, which order is duly recorded in Minute Book No 3 page 97 Minutes of the County Court of Palo Pinto County, Texas,

And whereas a copy of said order was duly and legally served on the County Courts of said Erath and Eastland Counties as required by Art. 802 Sayles Revised Statutes of Texas, and said Courts of said Erath and Eastland Counties, acting upon said notices, appointed McCewn Johnson and Frank E Thomas, the respective surveyors of said Counties, to assist in running said line, as required by law,

Therefore, in obedience to said mentioned orders, we M V Smith, McCewn Johnson, and Frank E Thomas, met at the appointed place, towit:-

The North West corner of Palo Pinto County, on the South Boundary & line of Young County, which said corner is thoroughly identified by original marks and bearing trees, and thence measured South 30 miles, and found and identified the original S W Corner of Palo Pinto County and the South East corner of Stephens County; and thence proceeded to run, mark, lay out and establish said boundary line between said Palo Pinto and Erath and Eastland Counties, as required by law, and as specified and required in the above mentioned orders, and now hereby submit to said Courts, the following field notes and plats of said line, as follows, towit:-

Beginning at the S W Cor of Palo Pinto County and the S E Cor of Stephens County on the North line of Eastland County, an old cor. a large sand stone, resting on two piles of Rock, marked on East End 30 M. P P C, on the West End S E C S C Nov 27, 1883, on the South edge E C. This corner was identified further by two bearing trees Marked X30 Hack X, This corner is $38\frac{2}{5}$ vrs East of an old corner described in other notes of the West line of Palo Pinto County and by the field notes of the Eastland County North Boundary line, it is marked by a sand stone marked S E C S C and has a Post Oak bearing standing as described by the Eastland County Field notes.

Palo Pinto Co Boundary Line 46

We ran West along the N line of Eastland County and South line of Stephens County at 800 Vrs found the 30 mile Post, a stone out of ground but replaced from bearings standing and marked, the Needle read at this point 8 degrees, 42 Min. East.

1st Mile: Running East from the S E Cor. of Stephens as above described at 38-2/5 vrs pass Old Cor of P P Co. 740 vrs East Bank of Russell's Creek, 880 vrs a Rock mkd S E C line on S side and P P C on N side, at this point we were 292 vrs South of a cor made by Brown for the S W Cor of Palo Pinto County 1886 vrs 1 mi South on Eastland County line, a large stone set in ground mkd P P C on the N and E C on the S side, two bearings standing.

2nd mi.: Running East 1242 vrs Brow of hill, 1431 vrs and old land cor. a pile of Rock, two L O bearings, this corner is 5 vrs South of County line at 1611 vrs pass South of a large bearing L O Marked four hacks on South side, 1894 vrs, 2nd mi. Post, a large stone in a pile of rocks on West side of trail, Old Bearings dead but standing;

3rd Mile: Running East 682-2/5 vrs. an old land line the East line of the Robertson County School land and West line of the Wm C Dykes survey 1000 vrs S of the N E Cor of said Rob. Co School land 784.8 acres in P P C and remainder in Eastland County, 880 vrs another land line a cor. with Cedar bearings on brow of hill 1460 vrs Rocky ledge overlooking valley 1600 vrs br. 1897 vrs, the third mile post bearings burned, a large rock with other stones about it;

4th mile: Running East 823 vrs ravine 1660 vrs Strawn road 1900.8 vrs four mile Post not found, a Cedar post set on old marked line, New bearings a Double Elm Mkd X 4 hacks X N 21 W 7 vrs. do mkd same N 37 E 5-2/5 vrs.

5th mile: Running East 482 vrs the E line of Wm C Dykes Sur. and West line of Isaac Ryan Sur. 650 vrs N of the S E Cor of the said Wm C Dykes Sur. 437 acres of this Survey is in Eastland and remainder in P P County. 553 vrs Center of Branch 978 vrs center of Strawn and Disdemora Road, 1890 vrs 5 mi po. a large stone in ground in Mesquite flat, no bearings;

This was the last mile post found and could find no trace of the old line

after passing this post. The Needle registered 8 Degrees and 57 min. at about 45 Degrees of temperature.

6th Mile: Running East 930 vrs Strawn Road, 1600 vrs edge of a rocky ledge, 1900.8 vrs set a Cedar post in bottom of Palo Pinto Creek mkd on N side P P C 6 mi. and S side EC Elm 78' dia Mkd X6 hacks X brs N 75-1/2 W 15 vrs Mesquite mkd same brs N 3-1/2 W 18 - 3/5 vrs.

7th mile: Running East 430 vrs center of south rong of Palo Pinto Creek, 482 vrs cross the E line of Isaac Ryan Sur. and w line of S P R R Sur. 650 vrs N of said Isaac Ryan S E Corner. There is 437 acres in East-land County, and remainder in Palo Pinto County, 728 vrs railRoad 780 vrs tank cutting about 2/3 South 1900.8 vrs , 7 Mi Post set, a stone mkd on the N side P P C 7 and S side E C Mes. mkd X 7 hacks X brs N 22 1/2 . a 10 vrs P O mkd X 7 hacks X brs N 55 1/2 E 8-3/5 vrs.

8th mile: Running Est 418 vrs the w line of S P R R Sur. and a line of 26 same name 58 vrs South of the N E Cor of said a survey S P R R . There is 19 1/2 acres of this survey in Palo Pinto County and remainder in Erath County, 7402-2/5 vrs fence 54 vrs South of corner, 1760 vrs West Edge of Branch 1900.8 vrs set 8 mi post & stone mkd on N PPC vlll and on South side E C a P O 3' dia. mkdX8hacksX brs S 34 1/2 E 1 1/2/5 vrs P O 2' dia mkd x 8 hacksx brs N 59 1/2 E 2/5 vrs.

9th mile: Running E 375 vrs cross Rail Road, 418 vrs the East line of S P R R sur and W line of Pedro Herrare 58 vrs S of the N E Cor of said S P R R Sur, 19 1/2 acres of this survey is in Palo Pinto County, and remainder in Erath County, 1900.8 vrs st 9 mi Post a stone on West side of point N W of Thurber, stone marked on N side P P C xlx a P O mkd x9hacks brs N W .

10th mile: Running East 400 vrs bed of ravine, 1039 vrs T & P R R , 1264 vrs Thurber and Thurber Junction Road, 1421 vrs Grave yard place, 1794 vrs to West fence of East Grave yard, 1801 vrs set stone mkd on N side P P C and S side E C on the N edge of Base Ball Park and on a high hill, 1900.8 vrs set 10 mi post on E side of hill a stone mkd on N side P P CX and S side E C.

11 mile: Running East 911 vrs fence , 944 vrs East line of Peadro Herrera and W line of Susan Latham Sur . 568 vrs S of the N E cor of said Peadro Herrera Sur 382 acres of this survey is in Palo Pinto County, and remainder in Erath County, 949 vrs Sout point of hill, 1900.8 vrs 11 mi post in branch, set a stone 1 vrs West mkd on N side P P-C XI and on South side E C from which a p o mkd xll hacks brs N $24\frac{1}{2}$ E 2 vrs.

12 mile: Running East 330 vrs brs 1250 vrs cross Road, 1265 fence, 1900.8 vrs st 12 mi post on West bank of branch, a stone mkd on N PPC XII and on South side E C tripple P O mkd X 12 hacks X brs N 83 E $10\text{-}4\frac{1}{5}$ vrs Elm mkd same brs N $56\frac{1}{2}$ E $2\text{-}2\frac{1}{5}$ vrs.

13 mile: Running East 575 E line of Susan Latham Sur, 909 vrs South of said Susan Latham N E Cor, 580.8 acres of this survey is in Palo Pinto County, and remainder is in Erath County, 1900.8 vrs set the 13 mi Post a stone mkd on N side P PC Xllll and on S side E C a P O mkd X 13 hacks X brs N 63 E 4 vrs P O mkd same S $49\text{-}\frac{3}{4}$ E $5\text{-}3\frac{1}{5}$ vrs.

14 Mile: Running East 19 vrs the E line of Noah Dickerson Survey 1568 vrs N of his S E Cor, 373 acres of this survey is in Erath County and remainder in Palo Pinto County, 1500 vrs Center of Gordon and Stephenville road set a rock on W side of said Road, 1900.8 vrs set 14 mi Post on hill a stone mkd on N side PPC XI V and South side E C a P O 3' dia brs S $35\frac{1}{2}$ W 2 vrs. do 10' dia brs N $63\frac{3}{4}$ W $8\text{-}4\frac{1}{5}$ vrs.

15 Mile: Running E 240 vrs Edge cotton field 547 vrs center Bartens Creek, 1085 vrs E line of Nathaniel Green's Survey 220 vrs N of his S E Corner, 104.6 acres in Erath County and remainder in Palo Pinto County, 1900.8 vrs, set 15 mi post a stone mkd on N side PPC X V and S side E C a P O mkd X15 hacks X brs N $30\frac{1}{2}$ E $9\text{-}2\frac{1}{5}$ vrs. do 3' dia Mkd same brs S 8 E 1 vrs.

16 Mile: Running East 158 vrs W line of the Vaugh Sur 80 vrs N of his S W Cor 21.7 acres of the Cunningham Survey in Erath County, and remainder in Palo Pinto County, 3.7 acres of the Vaugh Sur in Erath Co. and remainder in Palo Pinto Co., 195 vrs Morgan Mill Road, 420 vrs Barley pass 80 vrs North of Barley's house, 1345 vrs branch Co N 1364 vrs cross E line of Barley Sur, 80 vrs N of his S E Cor, 13.5 acres of this survey
4 his in Erath County, and remainder in Palo into County, 1900.8 vrs set
57827

stone on E slope for 16 mi post mkd on N side PPXVI and on S side E C ,
a P O 6' dia brs S 80 E 1-1/5 vrs do 8' dia brs N 79 W 4/5 vrs.

17 mile: Running East 316 vrs cross a line Priest Sur, 353 vrs N of
his S W Cor, 425 vrs W line of Williams Sur, 46 vrs N of his S E Cor 7.7
of said Williams survey is in Erath County, and the remainder in Palo
Pinto County, 1148 vrs East edge of Cliff, 1480 vrs J Rays House, 25 vrs
N Line, 1700 vrs Little Sunday Creed, 1900.8 vrs set the 17 mi pst a stone
on hill mkd PPCXVII and S C a large stone mkd (corss) brs E 6-2/5 vrs on
North Point of hill.

18 mile: Running west 473 vrs East line of Wm Priest Sur , 353 vrs
N of his S E Cor. 118.7 acres of this survey is in Erath County and re-
mainder is in Palo Pinto County, 1040 vrs branch, co N 1540 vrs br Co N
1900.8 vrs set 18 mi post, a stone in "wash" in flat mkd on N side P P C
XVIII and on South side E C no bearings.

19 mile: Running East 495 vrs E line Winter's Survey and W line
Eggleston Sur 494 vrs N of the S W Cor of said Eggleston's Sur. 118.7
acres of the winters Survey is in Erath County, and the remainder in Palo
Pinto County, 860 vrs top of Mountain, 1160 vrs pass 25 vrs N of Him
Forcens Rent house, 1180 vrs Center of Gordon and Morgan Mill Road, set
a stone on W side 1900.8 vrs a point in Forcen's Field, did not set post,
about 180 vrs N of Forcens house.

20 Mile: Running East 260 vrs Cross Loss Creek , co N 343 vrs set
stone on ridge mkd XIX 343 PPC on N side and E C on South side, 900 vrs
Saline or Sunday Creed, 1300 vrs E line of Eggleston Survey and W line
of ^{Wm} Eggleston Survey ~~and~~ 494 vrs N of saidana Eggleston's S E Cor, 117 1/2
acres each of the ana Eggleston Survey are in Erath Co, and the remainder
in Palo Pinto County. also S 31 vrs of the S W cor of J K Jennings Sur,
1900.8 vrs set 20 mi post on top of ridge, a stone set mkd on N side PPC XX
and S side E C P O 7' dia Mkd X20 hacks X brs N 7 1/4 W 5-1/5. do 10' dia
mkd same brs s 87 1/4 E 5-2/5 vrs.

21 Mile: Running East 760 vrs Little Bear Creek Co N 1900.8 vrs
set 21 mi post a natural stone on East slope of hill mkd PPC XXI and E C
P O mkd x21 hacks x brs S 64 E 5 vrs. do mkd same brs N 43 E 7-3/5 vrs.

22 mile: Running East 800 vrs Big Bear Creek, co N W 12 00. vrs Dud Long's house on Ray survey 125 vrs N of line 1360 vrs E line of Ray Sur 440 vrs N of his S E Cor, 73.9 acres of this survey is in Erath Co. and remainder in Palo Pinto County, 13.9 acres of the Wm Egglestons Sur is in Palo Pinto County, and remainder in Erath County, 1900.8 vrs set 22 mile post 20 vrs N of the Patilo road, a stone set in ground mkd on N side PPC XXII and on S side E C no bearings.

23 mile: Running East 1900.8 vrs det 23 mi post a stone set mkd on N side PPC XXIII and on south Side E C P O mkd X3hacksX brs N $26\frac{1}{2}$ E ~~2-2/5~~ 2-3/5 vrs. do mkd same brs S $70\frac{1}{4}$ W 8-2/5 vrs.

24 mile: Running East 195 vrs E line of Threighen Sur and W line of Christ Winters Sur, 695 vrs S of N W Cor of Winters Sur and 790 vrs S of the N E Cor of the Threighen Sur 23.8 acres of the Fyffe Sur is in Erath County, and remainder in Palo Pinto County, 168.8 acres of the Threighen Sur is in Palo Pinto County, and remainder in Erath County, 1670 vrs Buck Creek, co n 1900.8 vrs set 24 mi post a stone mkd North side PPC XXIV and on S side E C a P O mkd x24hacks x brs S $80\frac{1}{2}$ W 4-4/5 vrs. do mkd same brs N 4 E 16 vrs.

25 mile: Running East 310 vrs W line of the J A Foster Sur and E line of Chris Winters Sur 789 vrs S of N W Cor of Foster Survey, 233.7 acres of said Winters Sur is in Palo Pinto Co. and remainder is in Erath County, 1900.8 vrs set 25 mi post a stone set in the ground mkd on N side PPC XXV and on S side E C P O mkd x25 hacks x brs N $84\frac{1}{4}$ W 5-2/5 vrs do mkd same brs N $3\frac{1}{2}$ W 5-2/5 vrs.

26 mile: Running East 500 vrs pass 150 vrs N of L J Hawk house 1900.8 vrs a point in field on E side of branch.

27 mile: Running East 2x 520 vrs Fanks House 100 vrs South of line 547 vrs W line of Foster Sur, 884 vrs South of N E Cor and 802 vrs S of the T & N O 45, 562.3 acres of the said Foster Sur is in Palo Pinto Co. and remainder in Erath Co., 552 vrs set stone on E side of road P O brs N $11\frac{3}{4}$ W 3-1/5 vrs, Bj. brs N $73\frac{1}{2}$ W 9-2/5 vrs, 1060 vrs pass 40 vrs S of rent house, 1360 vrs pass 100 vrs N Stephen Heagans house, set 1680 vrs a stone P O brs N $21\frac{3}{4}$ E $3\frac{3}{4}$ vrs 1680 Billingsleys house 60 vrs N of line 1900.8 vrs in large field, did not set stone. *Palo Pinto Co. Billingsleys* cont. 57829

23 mile: Running East 730 vrs br Co S 970 vrs E line T & N O No 45, 265 acres of this Sur is in Palo Pinto Co. remainder is in Erath County, 1400 vrs pass 70 vrs N of McKinseys house, 1833 vrs, stone set on W side of ditch mkd 28--75, 1900.8 vrs 28 mi in field.

29 mile: Running East 810 vrs pass 6 vrs N of Dyers House, 835 vrs E line of T & N O No 44, 897 vrs South of the N E Cor of this sur, 282 acres are in Palo Pinto County, and remainder is in Erath County. Through the Patterson Survey, the line is 40 vrs South of Road, 1900.8 vrs set a stone for 29 mile post, mkd on N side PPCXXIX and on South side E C P O mkd X29hacks x brs S 60 W 2-3/5 vrs . do mkd same brs N 21 E 9-3/5 vrs.

30 mile: Running East 940 vrs br Co S 1025 vrs E line Patterson Sur and center Lipan Road 75 vrs N of S W Cor of N W 1/4 BBB & C R R Co Sur 362.2 acres of the said Patterson Survey is in Palo Pinto County, and remainder is in Erath County, 1180 vrs pass 25 vrs N of the Uno Jones House 1935 vrs set the S E Cor of Palo Pinto County, and the North East Corner of Erath County. We set this corner in the Parker County West line prolonged and is 3 miles 662 vrs South of the S W Corner of Parker County, We went to the S W cor of Parker County., found Old Rock in ground and a bearing standing. Prolong the West line of Parker County, found several old marked trees. The Needle registered 8 Degrees 21 min E. Where this line crossed the S line, we set a large stone in Mr S^ul'f field, mkd on N side S E C P P C XXX and on S side N E C E C Jan 12, 1907. This cor. is 992 vrs W and 942 vrs S of the N E Cor of the BBBC RR Co Sur. a P O 18' dia mkd X30hacksX brs S 62 W 64-1/5 vrs. P O 12' mkd same brs S 31 1/2 W 71-4/5 vrs.

This Survey was begun on the 29th day of December, 1906 and closed on the 12th day of Jan, 1907.

geth swift, and ()
womer plankenship. ()
Ross wepaniels, wead wlagman,
Joe Corbin, back wlagman.

signed this 25 day of January, 1907.

Frank C. Thomas surveyor ^{old} Co
McKenna Johnstone Surveyor E. Co
W. Smith Palo Pinto Surveyor C.P. Co.
Erath

Surveyors of Erath, Eastland, & Palo Pinto Counties.

Palo Pinto Co. Bdm. No. #46
02842

Los Golpin' Back Wagon

Comptroller
SALAELOLA I [unclear] SALAELOLA

The State of Texas

Palo Pinto County

I, Geo Metcalfe, Clerk of the County Court
in and for said County and State, do

hereby certify that the above and foregoing is a true and correct copy of
the record of the report of survey and field notes of boundary line
between Palo Pinto, Eastland and Erath Counties, as the same appears
of record in Vol 40, page 61 of the Deed Records of Palo Pinto County,
Texas.

Given under my hand and seal of office this 11th day of July 1907.

Geo Metcalfe, County Clerk

Palo Pinto County, Texas.

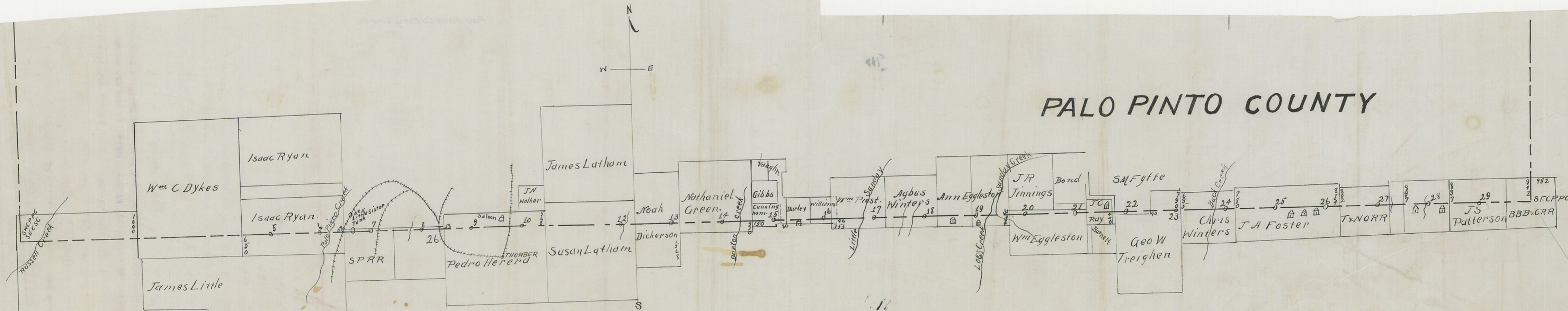
By J. P. Carrigan Deputy.

A²

of Erath County. We set this corner in the Parker County West line pro-
1832 also set the S E cor of Palo Pinto County, and the North East corner
remainder is in Erath County, 1180 also base 32 also N of the two Jones House
282's acres of the said Patterson survey is in Palo Pinto County, and re-
and center given base 32 also N of S W cor of N W 1/4 BB & C B B Co sur
30 mile: Beginning East 340 also pl Co S 1032 also E line Patterson sur
mkd X38466 x pla 2 60 W 2-3/4 also . 90 mkd same pla N ST E 2-3/4 also
stone for 30 mile base, mkd on N side PBCXXIX and on South side E C B O
the Patterson survey, the line is 40 also South of base, 1300.8 also set a
acres are in Palo Pinto County, and remainder is in Erath County. Through
E line of L & M O No 44, 333 also South of the N E cor of this sur, 325
38 mile: Beginning East 310 also base 6 also N of Dyers House, 322 also
of ditch mkd 28--22, 1300.8 also 38 mi in field.
1400 also base 30 also N of McKinnays house, 1832 also, stone set on W side
322 acres of this sur is in Palo Pinto Co. remainder is in Erath County,
38 mile: Beginning East 320 also pl Co S 330 also E line L & M O No 42,

PALO PINTO COUNTY

ERATH COUNTY



Palo Pinto Co Bdry. line 46

cut to 61710

^S
Southern Line Palo Pinto
Palo Pinto Co Bdry Line 4b

Palo Pinto Co

48 +