

GABE T. VICK
County Judge

NOLAN QUEEN
County Attorney

W. D. (BILL) CARR
Tax Assessor-Collector

BOBBY JOE TIPTON
County Clerk

EVELYN H. BEAVER
District Clerk

MRS. GLENN SANDERS
County Treasurer

COY CARTER
Sheriff

ROY G. FOSTER
County Auditor



PARKER COUNTY
WEATHERFORD, TEXAS

RECEIVED
AUG 7 1965
General Land Office

COMMISSIONERS

SCOTT WOODY
Precinct No. 1

CHARLES BAILEY
Precinct No. 2

LOUIS GILBERT
Precinct No. 3

J. T. MCLAUGHLIN
Precinct No. 4

THE STATE OF TEXAS §

COUNTY OF PARKER §

BE IT KNOWN, that on this the 30th day of July, 1965, the Commissioners' Court of Parker County, Texas, convened in regular session, at the regular meeting place thereof in the Courthouse at Weatherford, Texas, the following members of the Court, to-wit:

Gabe T. Vick, County Judge, Presiding
Scott Woody, Commissioner Precinct #1
Charles Bailey, Commissioner Precinct #2
Louis Gilbert, Commissioner Precinct #3
J. T. McLaughlin, Commissioner Precinct #4

being present, and among other proceedings had by said Court were the following:

MOTION by Scott Woody, seconded by Louis Gilbert to accept the boundary line between Parker and Tarrant Counties as established by the General Land Office of the State of Texas as shown by the map and field notes attached hereto.

ALL VOTED AYE

MOTION CARRIED

I, Bobby Joe Tipton, County Clerk, for Parker County, Texas, hereby certify that the foregoing is a true, correct and full copy of the COMMISSIONER'S COURT MINUTES as appears of record in the county clerk's office of Parker County, Weatherford, Texas.

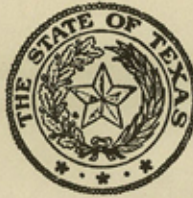
This 4 day of August 19 65.

Vol. _____ Page _____

By Bobby Joe Tipton Bobby Joe Tipton
Deputy County Clerk

No Account

GABE T. VICK
COUNTY JUDGE
NOLAN QUEEN
COUNTY ATTORNEY
W. D. (BILL) CARR
TAX ASSESSOR, COLLECTOR
BOBBY JOE TIPTON
COUNTY CLERK
EVELYN H. BEAVER
DISTRICT CLERK
MRS. GLENN SANDERS
COUNTY TREASURER
COY CARTER
SHERIFF
HENRY T. GEORGE
COUNTY AUDITOR



PARKER COUNTY
WEATHERFORD, TEXAS

Judge

COMMISSIONERS
SCOTT WOODY
PRECINCT NO. 1
CHARLES BAILEY
PRECINCT NO. 2
LOUIS GILBERT
PRECINCT NO. 3
J. T. MCLAUGHLIN
PRECINCT NO. 4

August 5, 1965

RECEIVED

AUG 7 1965

General Land Office

8

Honorable Jerry Sadler
Commissioner
General Land Office
Austin, Texas

Dear Commissioner:

Enclosed please find a certified copy of our Commissioners' Court Order accepting the line established by your office between Parker and Tarrant Counties.

Your assistance in this matter is sincerely appreciated.

Yours very truly,

Gabe T. Vick
Gabe T. Vick

GTV:ww

cc: Honorable Marvin Simpson
County Judge, Tarrant County
Civil Courts Building
Fort Worth, Texas

Parker Co Bdry Line 2a

Description of Relocation of the County Line
between Tarrant and Parker Counties

Beginning at a point 38.2 varas West of a concrete post with an underground mark consisting of a brass plug set in concrete under the post, which was set by R. G. Brown in 1964 for the Southwest corner of Tarrant County and the Southeast corner of Parker County.

Thence N. 1 degree 06.25 minutes E. at 128.0 varas pass 38.0 varas West of a 5/8th inch reinforcing bar in center of a county road, (T.C. Road No. 1042), at 139.7 varas pass 37.98 varas West of a 4 inch square concrete post set in the North fence line of said road; at 942 varas pass 36.7 varas West of a 5/8th inch reinforcing bar with aluminum plug set in fence line on the South line of the J. L. Goforth Survey, said plug being 354.6 varas West of its Southeast corner; at 1900.8 varas pass 35.1 varas West of concrete post set for Mile Post No. 1 by R. G. Brown, said post being 335.88 varas West of the East boundary line of the Goforth Survey.

Thence continue N. 1 degree 6 minutes 25 seconds E. at 3801.6 varas pass 32 varas West of Mile Post No. 2, a concrete post set in cultivated field by R. G. Brown, 189.6 varas East of the fence on West line of the M. Bonner Survey.

Thence continue N. 1 degree 06 minutes 25 seconds E. at 5702.4 varas pass 29.0 varas West of Mile Post No. 3, a concrete post set in pasture 151.2 varas West of the East line of the G. H. Tarpley Survey by R. G. Brown.

Thence continue N. 1 degree 06 minutes 25 seconds E. at 7603.2 varas pass 26.0 varas West of Mile Post No. 4, a concrete post set in pasture by R. G. Brown.

Thence continue N. 1 degree 06 minutes 25 seconds E. at 9504.0 varas pass 22.95 varas West of Mile Post No. 5, a concrete post set in a wooded pasture on East side of a small draw as set by Brown.

Thence continue N. 1 degree 06 minutes 25 seconds E. at 11,404.8 varas pass 19.9 varas West of Mile Post No. 6, a concrete post set in edge of cultivated field on West side of a small draw.

Thence continue N. 1 degree 06 minutes 25 seconds E. at 13,305.6 varas pass 16.86 varas West of Mile Post No. 7, a concrete post set on high rocky ridge, at 15,206.4 varas pass 13.81 varas West of Mile Post No. 8, a concrete post set in level pasture land, 295.9 varas North of fence on South line of the William Robinson Survey, and at 17,107.2 varas pass 10.76 varas West of Mile Post No. 9, a concrete post set in pasture 614.1 varas N. 1 degree 00 minutes 54 seconds E. from center line of main track of the Texas and Pacific Railroad.

Thence continue N. 1 degree 06 minutes 25 seconds E. at 19,008.0 varas pass 7.71 varas West of Mile Post No. 10, a concrete monument set in a pasture, and at 20,908.8 varas pass 4.65 varas West of Mile Post No. 11, a concrete post set in a pasture, and at 22,809.6 varas pass 1.6 varas West of Mile Post No. 12, a concrete post on East bank of a ravine on North side of a pile of rocks forming a retard dam in the ravine, and at 23,809.6 varas, a clump of Live Oaks, (5 trees 15 inches to 18 inches and 6 trees 8 inches to 10 inches) in an area about 25 feet in diameter and being the same clump of trees called for on Walkers line. The coordinates for this point being X = 1,985,047.3 and Y = 389,403.8.

Thence N. 1 degree 01 minutes 37 seconds E. at 24,710.4 varas pass 0.19 varas East of Mile Post No. 13, a concrete post set on the East side of a draw in a pasture; at 26,611.2 varas pass 0.58 varas East of Mile Post No. 14, a concrete post set in pasture; at 28,512.0 varas pass 0.98 varas East of Mile Post No. 15, a concrete monument set on Northeast slope of a hill in a pasture; at 30,412.8 varas pass 1.38 varas East of Mile Post No. 16, a concrete post set on rocky north slope in a wooded pasture; at 32,313.6 varas pass 1.77 varas East of Mile Post No. 17, a concrete post set on rocky north slope of a wooded pasture; at 34,214.4 varas pass 2.17 varas East of Mile Post No. 18, a concrete post set in a sandy field; at 36,115.2 varas pass 2.57 varas East of Mile Post No. 19, a concrete post set in wooded pasture; at 38,016.0 varas pass 2.96 varas East of Mile Post No. 20, a concrete post; at 39,916.8 varas pass 3.36 varas East of Mile Post No. 21, a concrete post set in cultivated field on north slope; at 41,840.6 varas pass 3.76 varas East of Mile Post No. 22, a concrete post set in East and West fence;

Thence continue N. 1° 01' 37" E at 43,483.6 varas pass 4.12 varas East of a concrete monument set flush at intersection of North Boundary line of Stewart Street and Silver Cree-Azle road, at 43,616.0 varas pass 18.5 varas East of Porch on the Ash Creek Baptist Church building, and at 43,718.4 varas pass 4.15 varas East of Mile Post No. 23, a concrete Post in edge of woods 27.0 varas West of a house.

Thence continue N. 1° 01' 37" E. at 44,233.0 varas North line of Azle Feed Store building 14.2 varas from Northwest corner of building and 53.0 feet or 19. varas from Southwest corner of building, at 44,325.1 varas pass 4.28 varas East of Iron pin in centerline of Old State Highway 199, at 44,330.0 varas pass 13.1 varas West of Kilroys Liquor Store (burned down) at 44,400.0 varas pass through Cabin No. 5 of Redwood Motel at 44,451.2 varas pass 4.30 varas East of 5/8 reinforcement rod in Centerline of Locust Street (formerly Wayne Street), at 44,696.4 varas pass 4.36 varas East of concrete monument on South side of Rae Street 44,858.6 varas pass 4.39 varas East of concrete monument set 5 feet South of curb on Industrial Avenue, at, 44,913.4 varas South Wall of Buddies Supermarket 126.8 feet West of Southeast corner of building and 12.2 feet or 4.4 varas East of cut on wall as made by R. G. Brown marked T. C. and P. C. on wall, at 45,501.5 varas 183.3 feet West of Package Store on Access road, at 45,155.5 varas pass 4.45 varas East of a 5/8" reinforcing bar in center of State Highway No. 199, at 45,291.9 varas South wall of Azle Bowl building 27.3 feet East of Southwest corner of building and 38.1 feet West of Southeast corner of building, building is 144.0 feet long north and South, at 45,619.2 varas pass 4.55 varas East of Mile Post 24, a concrete Monument in back lot of resident in Azle 24.1 varas East of a North South fence and 17.3 varas South of East-West fence.

Thence continue N. 1° 01' 37" E 45,858.9 varas pass 4.60 varas East 4" Square concrete Monument set in on East-West fence, 210.45 varas West of Centerline of State Highway No. 730 said co-ordinates at concrete monument are X=1,986,132.0 and Y=450.619.1 at 46,845.3 varas pass 4.79 varas East of 5/8" reinforcement bar in center line of public road 175.9 varas West of Centerline of State F.M. Highway 730, at 46,854.3 varas pass 4.80 varas East of 4" Square concrete post in North fence line of road, and at 47,520.0 varas pass 4.95 varas East of Mile Post No. 25, a concrete Post set in back lot of resident, said line being 164.8 varas West of West Boundary line of State F. M. Highway No. 730.

Thence continuing N.1° 01' 37" E at 49.059.1 varas pass 5.25 varas East of a 4" square concrete post set in South fence line of County Road (T. C. Road No. 4118) and at 49,384.8 varas pass 5.33 varas East of Mile Post 26, a concrete post set on West side of deep draw; at 49,807.4 varas pass 5.41 varas East of a 4" Square post set in South Right of Way fence of State F. M. Highway No. 1542, at 49,825.2 varas pass 5.42 varas East of a 5/8" reinforcing bar in center of State F.M. Highway No. 1542, 144.2 varas West of Center line of State F. M. Highway No. 730, at 51.321.6 varas pass 5.74 varas East of Mile Post No. 27, Concrete Post gone, at 52,082.6 varas pass 5.89 varas East of a 4" Square concrete post in South fence of a county Road, (T. C. Road No. 4038) said line being 87.3 varas West of West right of Way line of State F. M. Highway 730, and at 53,222.4 varas Mile Post 29, concrete monument gone, line being 6.13 varas East of line as surveyed by R. G. Brown.

Thence continuing N. 1° 01' 37" E 54,808.4 varas pass 6.45 varas East of 4" Square concrete post set on West of top of a steep rocky hill, and at 55.123.2 varas pass 6.53 varas East of Mile Post No. 29, a concrete post set in pasture, at 55,559.2 varas pass 6.62 varas East of a 5/8" reinforcing bar in centerline of paving of State F. M. Highway No. 2257.0, said bar being 31.68 varas west of West right of Way line of State F. M. Highway No. 730, at 57,462.6 varas set Nail in West Right of Way line of State F. M. Highway No. 730, said corner being 7.02 varas East of a 6" X 6" concrete post set by R. G. Brown for the Northwest corner of Tarrant County and North-east corner of Parker County.

James E. McCarty
James E. McCarty
Licensed State Land Surveyor
Registered Public Surveyor

Employed by the General Land Office

August 11, 1965

Honorable Gabe T. Vick
County Judge
Parker County
Weatherford, Texas

Dear Judge Vick:

I appreciate your letter dated August 5 in which you enclose a certified copy of a resolution passed by your Commissioner's Court approving the boundary line we feel is equitable and fair to both Tarrant and Parker Counties.

I hope that we will soon receive a similar resolution from Tarrant County. Upon receipt of such, I will notify you.

Sincerely yours,

JERRY SADLER, Commissioner

JS/jg

August 12, 1965

Honorable Gabe T. Vick
County Judge
Parker County
Weatherford, Texas

Dear Judge Vick:

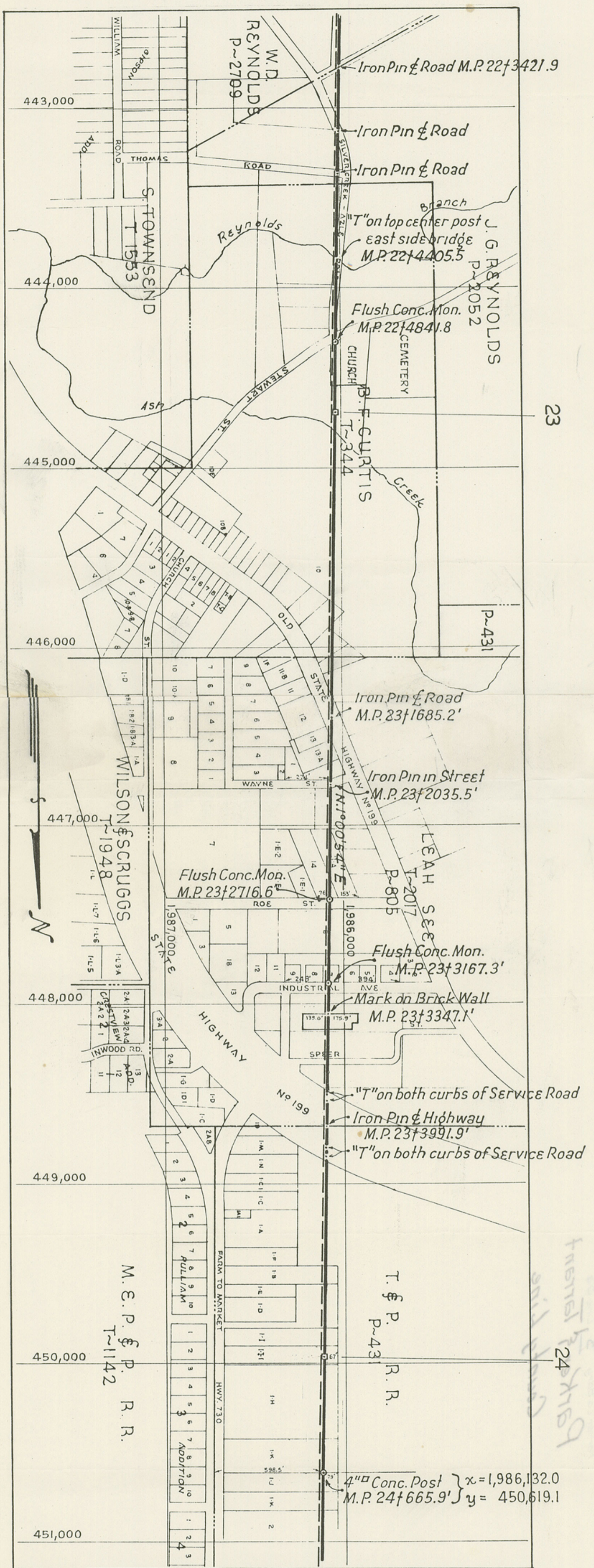
We received a Resolution from Tarrant County in which they have accepted the boundary line that my office established between Tarrant and Parker County. This should conclude the matter and it has been a pleasure working with you.

Sincerely yours,

JERRY SADLER, Commissioner

JR/jg

The Tarrant-Parker County Line as established by the General Land Office is depicted by broken line (---), being east of the dark line shown on the City of Azle map and its more fully described by attached description.



23

24

Handwritten notes:
 T & P
 R. R.
 P-431

4" Conc. Post } x = 1,986,132.0
 M.P. 24+665.9' } y = 450,619.1

54847