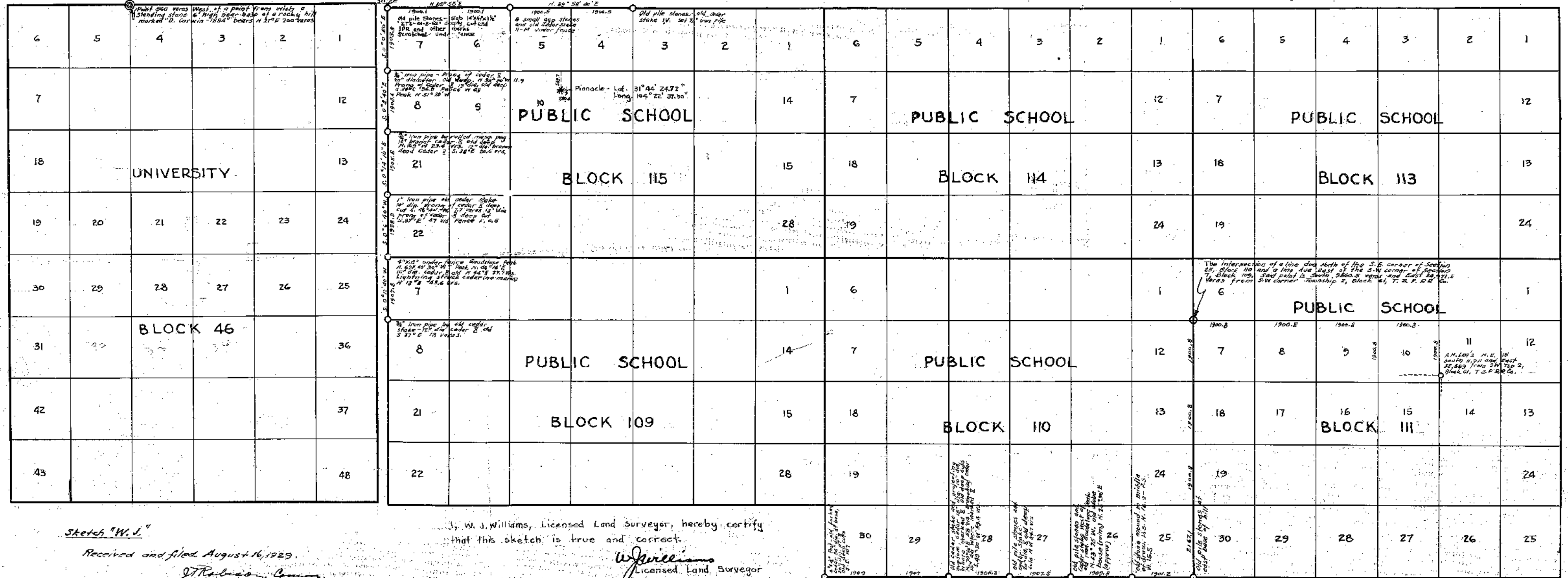


# CULBERSON COUNTY SKETCH

Scale 1 in. = 2000 varas



Sketch "W. J."

Received and filed August 16, 1929.

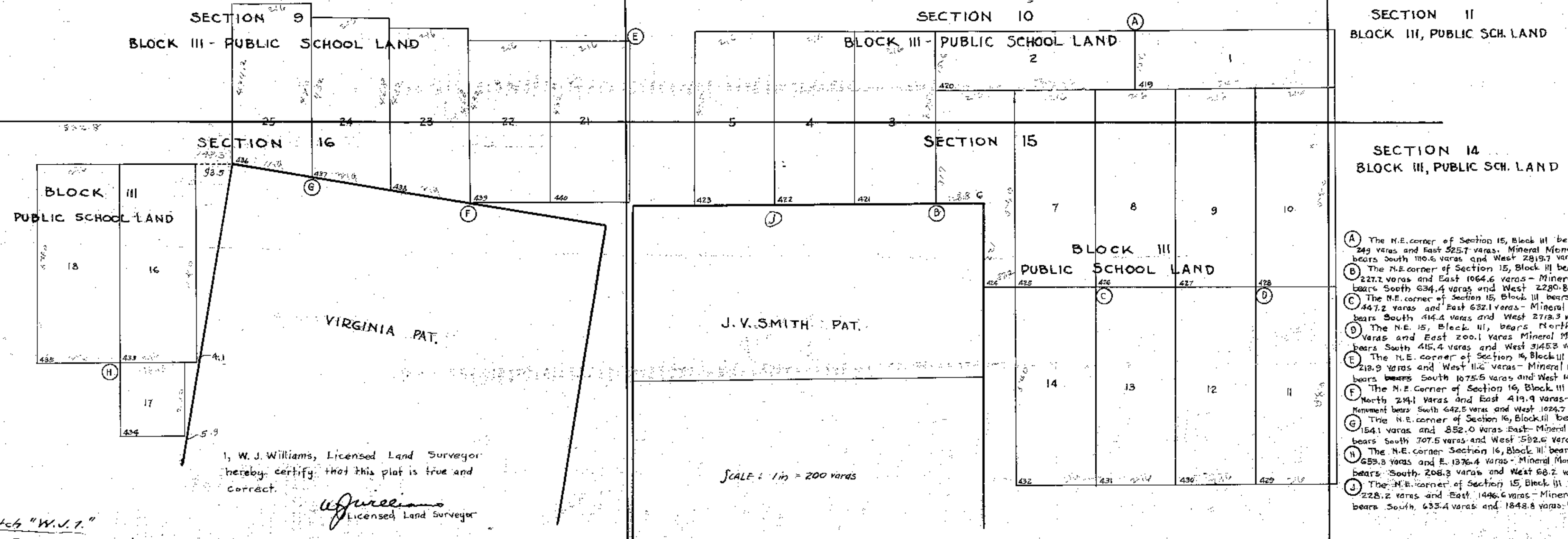
J. H. Robinson, Comm.  
C. F. Blum, Sec.

W. J. Williams, Licensed Land Surveyor, hereby certify that this sketch is true and correct.

W. J. Williams  
Licensed Land Surveyor

G. A. Tobbs, Draftsman - Lubbock, Texas.

SKETCH SHOWING PART OF  
CULBERSON COUNTY - TEXAS



I, W. J. Williams, Licensed Land Surveyor  
hereby certify that this plat is true and  
correct.

*W. J. Williams*  
Licensed Land Surveyor

Sketch "W. J. 1."  
Received and filed August 16th, 1929.

*J. Robinson*  
Commiss.  
*C. F. Blundell*

- (A) The N.E. corner of Section 15, Block III bears South 249 varas and East 525.7 varas - Mineral Monument bears South 110.6 varas and West 2819.7 varas.
- (B) The N.E. corner of Section 15, Block III bears North 227.2 varas and East 1064.6 varas - Mineral Monument bears South 634.4 varas and West 2280.8 varas.
- (C) The N.E. corner of Section 15, Block III bears North 447.2 varas and East 632.1 varas - Mineral Monument bears South 414.4 varas and West 2713.3 varas.
- (D) The N.E. corner of Section 15, Block III bears North 446.2 varas and East 200.1 varas - Mineral Monument bears South 415.4 varas and West 3145.8 varas.
- (E) The N.E. corner of Section 16, Block III bears South 218.9 varas and West 11.6 varas - Mineral Monument bears South 1075.5 varas and West 1432.6 varas.
- (F) The N.E. corner of Section 16, Block III bears North 214.1 varas and East 419.9 varas - Mineral Monument bears South 642.5 varas and West 1024.7 varas.
- (G) The N.E. corner of Section 16, Block III bears North 154.1 varas and East 852.0 varas - Mineral Monument bears South 707.5 varas and West 582.6 varas.
- (H) The N.E. corner of Section 16, Block III bears North 659.3 varas and East 1376.4 varas - Mineral Monument bears South 208.3 varas and West 68.2 varas.
- (J) The N.E. corner of Section 15, Block III bears North 228.2 varas and East 1446.6 varas - Mineral Monument bears South 633.4 varas and 1848.8 varas West.

SCALE: 1 in = 200 yards

*C. A. Tobbs, Draftsman - Lubbock, Texas*