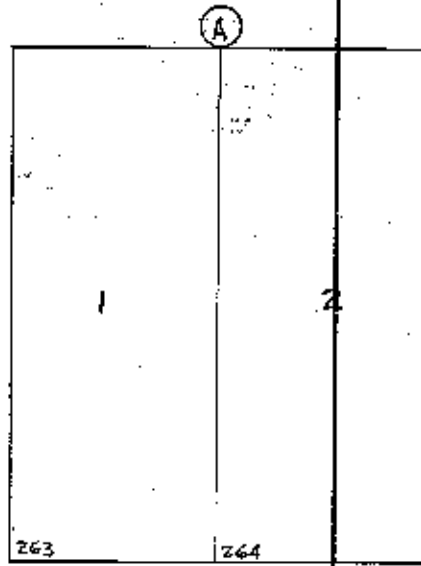


SKETCH SHOWING PART OF
CULBERSON COUNTY, TEXAS

BLOCK 46, UNIVERSITY LAND

21



22

(A) The S.E. corner of Section 21, Block 46, University School Land bears South 1216.0 varas and East 123.3 varas. The center of rock cap on dome shaped hill bears South 251.5 varas and East 72.3 varas. Cone shaped peak bears North 4100.6 varas and East 3945.6 varas. Rock 6 feet high at base of rocky hill marked "D. Corwin-1884" bears North 6573.9 varas and West 1145.8 varas.

(B) The S.E. corner of Section 21, Block 46, University School Land bears North 326.9 varas and West 6.1 varas. The center of rock cap on dome shaped hill bears North 1291.4 varas and West 57.1 varas. Cone shaped peak bears North 5643.5 varas and East 3816.2 varas. Rock 6' high at base of rocky hill marked "D. Corwin-1884" bears North 8116.8 varas and West 1275.2 varas.

(C) The S.W. corner of Section 22, Block 46, University School Land bears South 548.8 and West 1698.4 varas. The center of rock cap on dome shaped hill bears North 4157 varas and West 1749.4 varas. Cone shaped peak bears North 4747.8 varas and East 2123.9 varas. Rock 6' high at base of rocky hill marked "D. Corwin-1884" bears North 7241.1 varas and West 2967.5 varas.

(D) The S.W. corner of Section 22, Block 46, University School Land, bears South 116.8 varas and West 1698.4 varas. The center of rock cap on dome shaped hill bears North 847.7 varas and West 1749.4 varas. Cone shaped peak bears North 5199.8 varas and East 2123.9 varas. Rock 6' high at base of rocky hill marked "D. Corwin-1884" bears North 7673.1 varas and West 2967.5 varas.

(E) The S.W. corner of Section 22, Block 46, University School Land bears North 315.2 varas and West 1698.4 varas. The center of rock cap on dome shaped hill bears North 1279.7 varas and West 1749.4 varas. Cone shaped peak bears North 5631.8 varas and East 2123.9 varas. Rock 6' high at base of rocky hill marked "D. Corwin-1884" bears North 8105.1 varas and West 2967.5 varas.

I, W. J. Williams, Licensed Land Surveyor,
hereby certify that this plat is true and
correct

W. J. Williams
Licensed Land Surveyor.

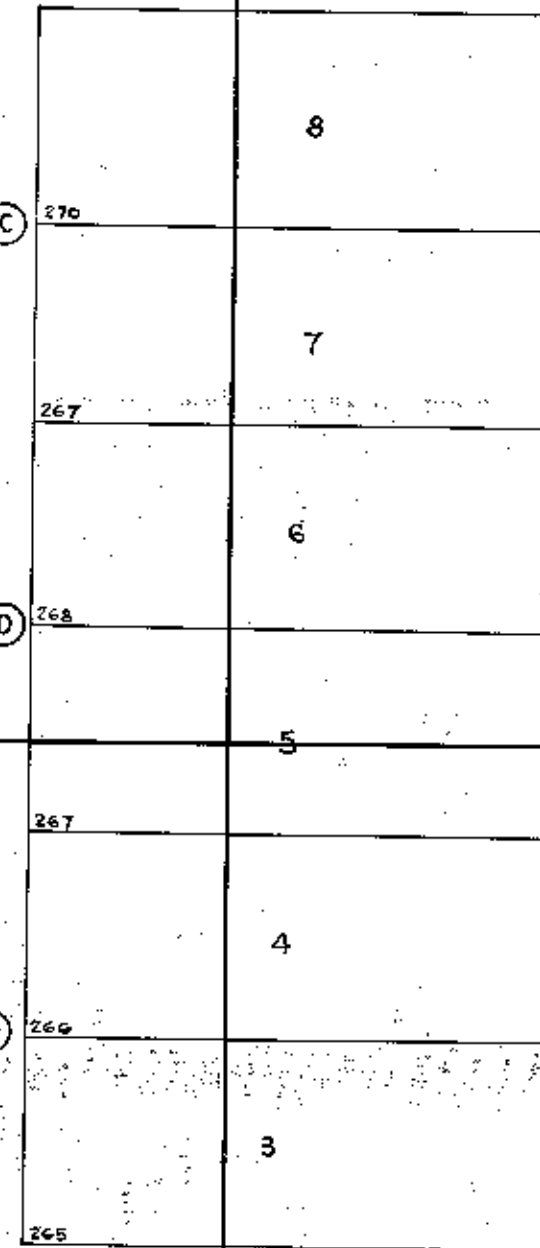
Sketch "W. J. 2."

Received and filed August 16th, 1929.

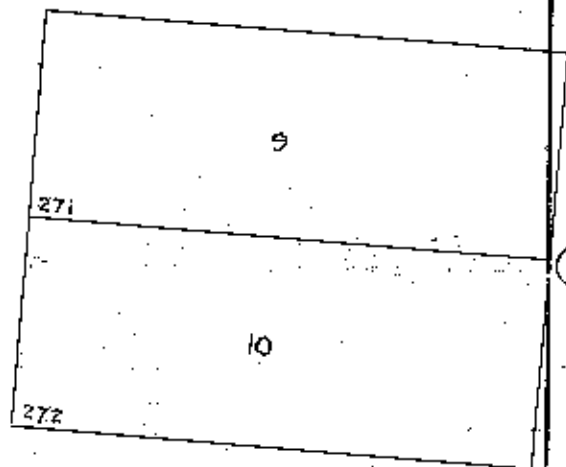
J. Robinson
Clerk
C. F. Blumberg
Clerk

27

23



28



26