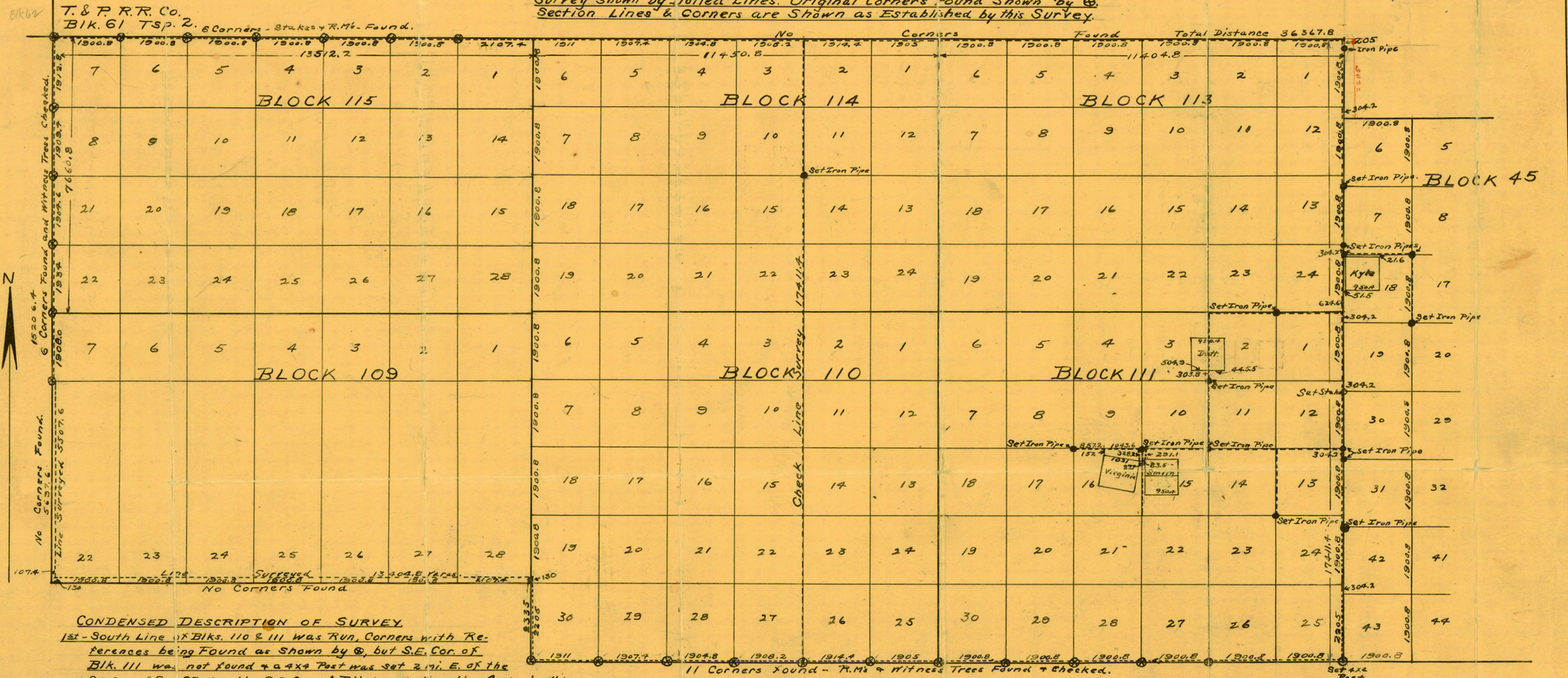


**PLAT SHOWING SURVEY MADE BY R.J. OWEN
TO ESTABLISH SECTION LINES FOR THE
MORGAN CLAIMS**

SITUATED IN BLKS. 45, 111, 113, & 114, CULBERSON CO., TEXAS.
Scale 1" = 2000 Yards
Surveyed in April & May, 1927
Survey shown by Dotted Lines. Original Corners Found Shown by .
Section Lines & Corners are Shown as Established by this Survey.

Sk R.J.
Rec'd 6/27/27



CONDENSED DESCRIPTION OF SURVEY.

- 1st - South Line of Blks. 110 & 111 was run, Corners with References being Found as Shown by , but S.E. Cor. of Blk. 111 was not found & a 4x4 Post was set 2 mi. E. of the S.E. Cor. of Sec. 27 for the S.E. Cor. of Blk. 111, all the other Cor's. in this Blk having been at even miles. An Excess was Found in every Section in Blk. 110, as shown.
- 2nd - Following Field Notes of Parker Map, Line was run N. from S.M. Cor. Sec. 30, Blk 110, 2335 vs, no Cor. being found at N.M. Cor. of Sec. 30; thence W. as shown to pt. called for S.M. Cor. Blk 109, no Cor's. being Found; thence N. 5507.6 vs where S.M. Cor. of Sec. 7, Blk. 109, was found 107.4 vs excess dist. West; thence N. Cor's were found as shown by to & including the S.M. Cor. of Blk. 61, T. & P. R. R. - A Total Excess was found in the South Lines of 153.4 vs, and a total Shortage in the West Lines of 130 vs. The Monuments on the West Line were not on Line, some being East & some West of it.
- 3rd - It was thought errors had been made in Chaining the South & West Lines, so the North Lines of Blks 115, 114 & 113 were run, Corners being Found as shown, and it was necessary to extend said N. Line the Excess Distance to intersect the E. Line of Blks 111 & 113, which was Surveyed N. from the S.E. Cor. of Blk 110, thus checking the Excess.
- 4th - Next a Check Line was Run from N. to S. through Blks 114 & 110 which proved Shortage found on West line of Blks. 109 & 115 extended to these Blks also; & East Line of Blks 113 & 111 showed same Shortage.
- 5th - Excess E. & W. in Blks 110 & 114 was Retained, the N. & S. Sect. Lines being governed by Cor's. Found in the Line; but the Excess in Sections found on W. Line of Blks 109 & 115 was not carried to the Blks East, as a shortage existed. This shortage was thrown into the S. tier of Sections in Blks 110 & 111, reducing them from 2335 vs to 2205 vs, and all the other Sections in Blks. 110, 111, 113 & 114 were taken to be 1900.8 vs N. & S. Sections in Blk 45 were taken to be 1900.8 vs. squares.

- 6th Section Cor's. for the Morgan Claims Adjoining the Kyle, Dott, Virginia & Smith Patents were then placed - Iron Pipes being set as shown - by Surveying from the S.E. Cor. of Blk 111 as shown, all of the Patents & Claims being tied together as shown on Large Map of Morgan Claims.
- 7th The Section Cor. of Secs. 10, 15, 11 & 14, Blk 114 was placed by a line from the N. Blk line as shown.

SK. "R. J." See Surveyor's Report MAP NO. 2.
See S.E.M.

Received and filed June 22, 1927
J.R. Owen
By G.H. Blucher, Licensed State Land Surveyor.