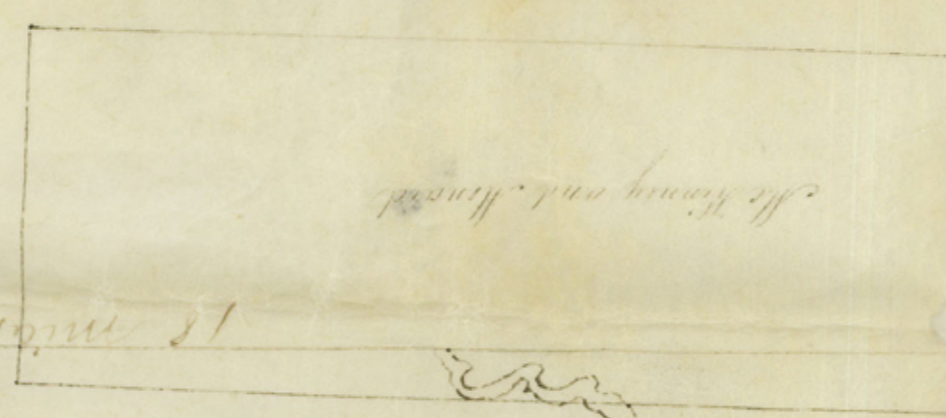


1843

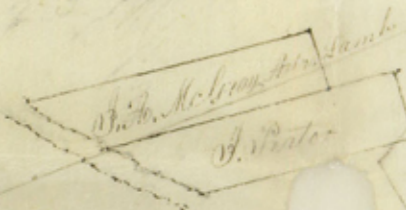
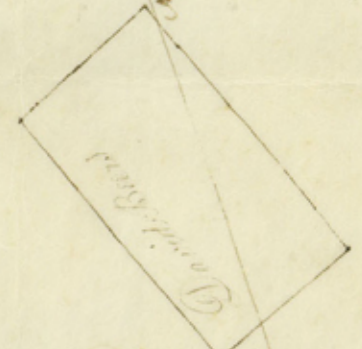
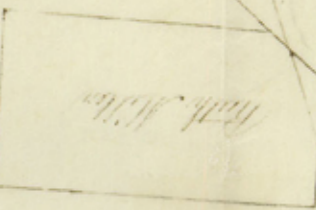
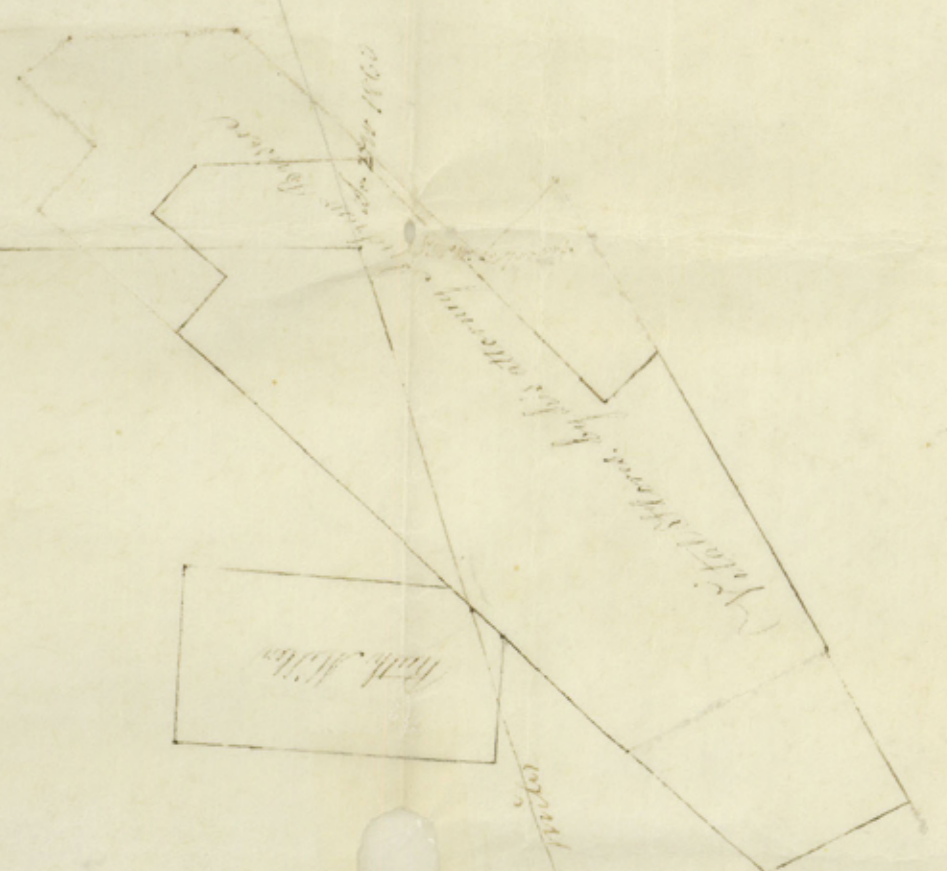
2111 1/2 miles

1843

1843



18 miles from town



1843

1843

1843

1843

I John R. Johnson do hereby certify that the above is a correct representation of the boundaries of said town as run by me in 1843 and that the survey at the corner of said town by an elderly representative Henry my hand this the 17th day of May 1843

John R. Johnson  
Surveyor

Folk Co Bdry Line 70a

5  
1

9

John R John Son's SK of Folk  
Co. boundaries

The State of Va  
County of Folk We the County Court  
of Folk County hereby certify that the  
within is a correct copy of the said notes  
of said County upon which we are of record  
in the order of said Court  
This February 21<sup>st</sup> 1855

Attested

Wm. H. Lee  
J. C. C.

Wm. H. Lee  
J. C. C.  
J. H. H. H.  
J. H. H. H.