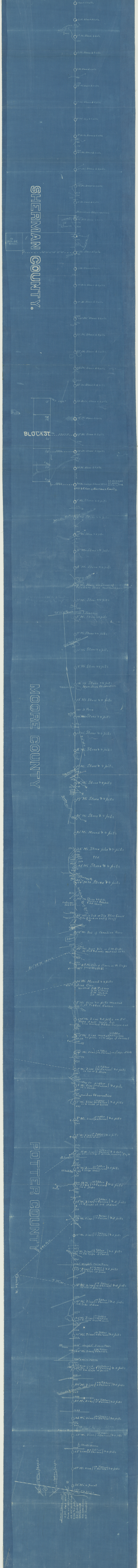


SHERMAN COUNTY MOORE COUNTY POTTER COUNTY



78
222.08,
6.22.4.

BLOCK 31

36° 12' W 14.5° E

N 79° W

30° W

30° W

30° W

30° W

30° W

30° W

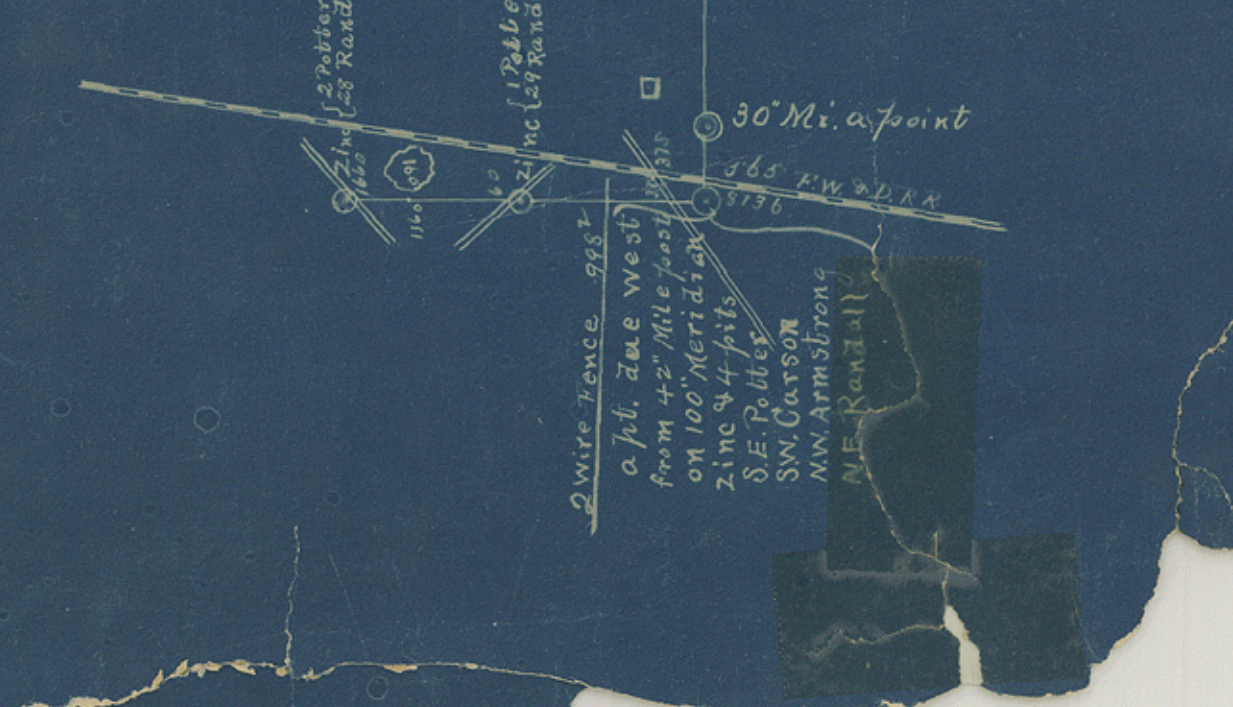
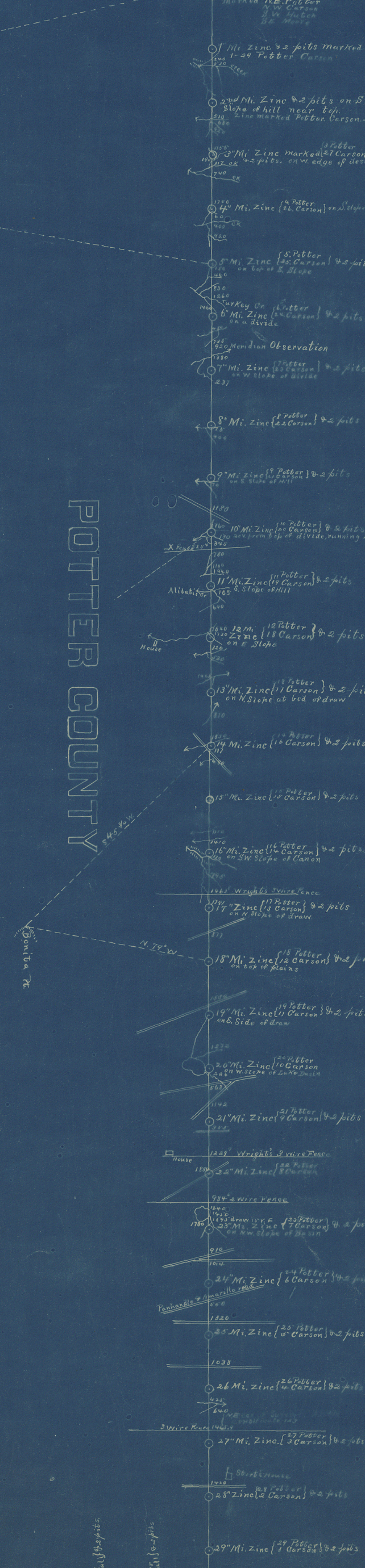
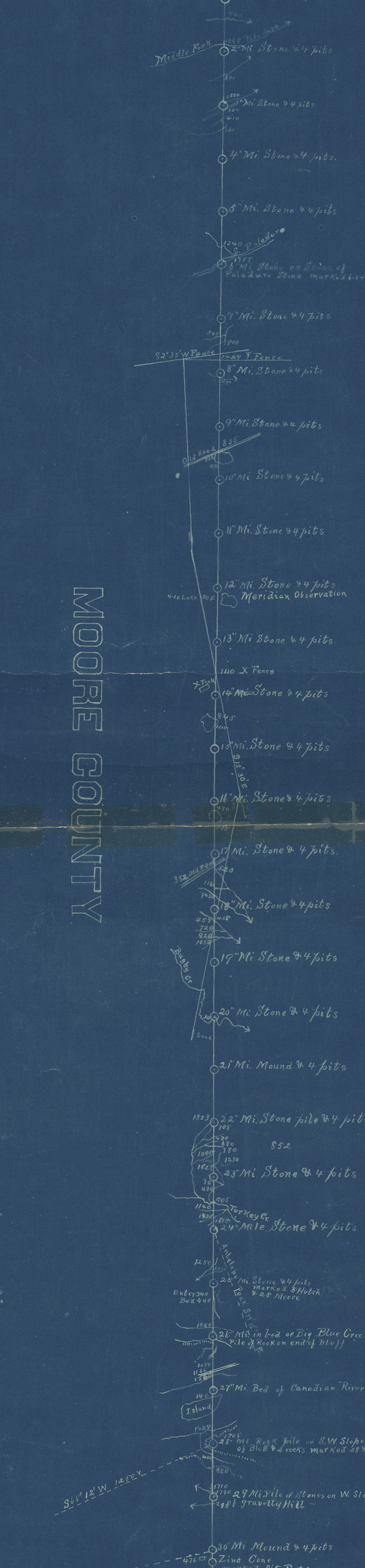
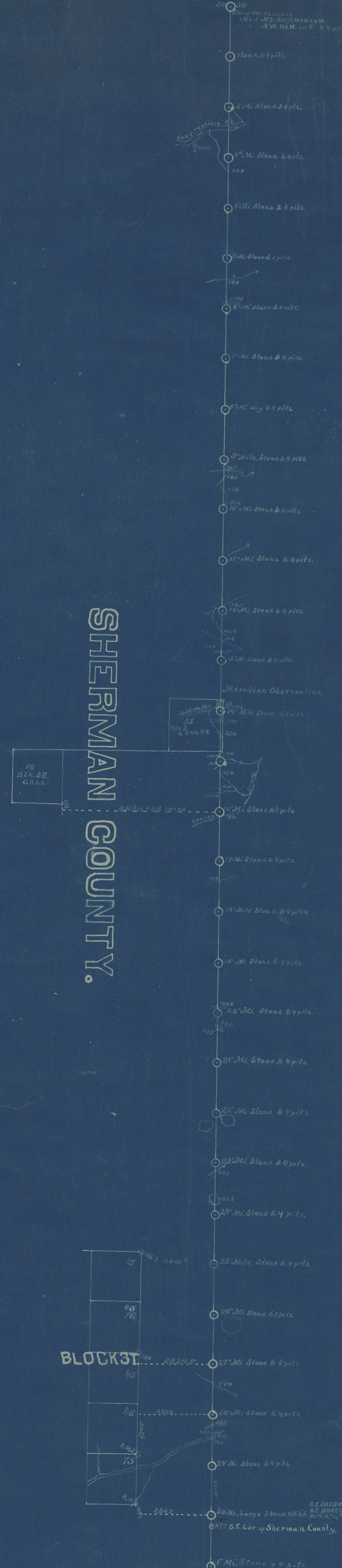
Potter Co. 2a ~~21~~

Plat of County line
between Sherman,
Hansford, Moore,
Hutchinson, Potter &
Carson Cos. by
W. D. Twitchel. Supt.

21

3) 813.6
271.2

542.4



SHERMAN COUNTY.

MOORE COUNTY

POTTER COUNTY

SHERMAN COUNTY

Wagon and Walker
Sherman Co. Ore.