

Reagan Co Bdry ~~4~~ Line 1b

REAGAN COUNTY
BOUNDRY LINE FILE

~~Title~~ _____

East Line of Reagan Co. Class _____

1) Field Notes _____ County _____

2 Sketch _____

(West Line of Irion Co. and part
of the West lines of Tom Green &
Sterling Co's. ~~Certificate No.~~ _____)

2654-320-1M

CONTENTS

- No. _____
- No. _____
- No. _____
- No. _____
- No. _____
- No. _____
- No. _____
- No. _____
- No. _____
- No. _____
- No. _____
- No. _____
- No. _____
- No. _____
- No. _____
- No. _____

~~Mg~~ _____

B7
county 58161

E

To the Hon' Commissioners Court of Reagan County, In obedience to an order of your Hon. body issued 11th day of July 1904 appointing me to survey the County boundary line of Reagan County, and to begin at the South West corner of Midland County on Sep. 1st 1904.

I here with Respectfully Submit the following Report of the East Line of Reagan County, passing through Surveys + C as shown on sketch here with filed.

I proceeded to the S. E. corner of Midland County and was met by T. St. Seay appointed for Glasscock, and J. M. Carson representing Iron Co. by Appointment, of Iron County Com. Court

+ Thence we surveyed East, Thirty Miles. (The report of the field notes of which, and sketch has been filed with your Court) and established the N. E. corner of Reagan County, the same being the S. E. corner of Glasscock County, as follows: Set a large Limestone Rock, 5 feet long, in the ground. Marked as follows on the West Side.



And on the East Side STERLING CO LINE, from which a mesquit 8 in dia bns N 44 W 46 1/2 vrs, a double mesquite bns. N 89 1/2 W 22 1/2. Observation on Polaris at this corner 10° 18' E. this corner is East 807 vrs and North 59 vrs. from the S. W. corner of Survey No. 49 Block No. 2 T P R R Co.

Thence South at 59 vrs. cross the north line of Survey No 50 T P R R Co B 2 2 567 vrs East from its N. W. corner. at 1970 vrs.

1 M At 1 mile set a rock in the ground marked on the West Side R Co L 1 M + on the East Side S Co L.

Thence continuing South at 1900 vrs.

2 M at 2 miles set a rock in the ground marked on West Side "R Co L 2 M" and on E Side S Co L whence a mesquit 6 in dia bns S 10 E 73 vrs

East Line Reagan Co

Reagan Co Bary Line 16

Thence South at 1850 varas cross a creek 60' S 'E' at 1900 var.

- 3M At Three Miles Set a rock in Indian Creek Valley marked on the E Side S Co L. on the West Side R Co L 3M. at 410 var cross the "7D" pasture fence. at 1900 var.
- 4M At Four Miles Set rock in ground marked on West Side R Co L 4M on E side S Co L at 4 miles and 1820 var cross creek - (Course N & S) - at 5 miles.
- 5M At Five miles Set rock in the ground marked on the west side R. Co L. 5M. and on the East "S Co L." (on a hill) at 1826 var cross a creek (Co NW) at
- 6M Six miles Set a rock in Valley (80 varas west of creek) marked on West Side R Co L 6M on East Side S Co L mesquite 4 in dia $S 85^{\circ} E 5\frac{1}{2}'$ at 6 Miles and 59 varas cross the South line of Survey No 55 Block No 2 T. P. R. R. Co. 1005 var East from its S.W. corner. at 1285 varas a point 577 varas west from the North East corner of Sur No 29, T. C. R. R. Co (Mark a rock "S. W Co 'S Co" at 1132 varas cross the S line of Sur No 46 in name of W. B. Bear at 1707 var cross the North line of Sur No (34) T. C. R. R. Co 577 var. West from its N.E. corner (a Rock mound)
- 7M At Seven miles Set a rock marked on W Side R Co L 7M on East side on the E Side T. G. Co L. on west foot of hill on E side of Valley
- 8M At Eight Miles Set rock in ground m'd on W Side "R Co L 8M" on E side "T. G. Co L." at 780 varas cross Lone Joe road (Co' N 50 E) - at 940 varas cross Indian Creek. continuing South (through thick timber) at 1320 var cross Corral Creek at 1453 var cross the North line of survey No 32 T. C. R. R. Co Block "A" 238 varas East from a rock mound the N. W. corner of No 32
- 9M At 9 Miles Set a rock in ground marked on W Side "R Co L 9M" and on the E Side T. G. Co L in thick mesquite flat 20 var W from a narrow deep pond, whence a mesquite 4 in dia m'd \bar{x} brs $S 25\frac{3}{4} W$

33 vrs a do mkd \equiv brs N $31\frac{1}{4}$ W 31 vrs. do 6 in dia
brs S $37\frac{1}{2}$ E 19 vrs at 9 miles and 88 vrs center of the
pond (Co S W) + NE) at 388 varas put a large rock
in ground marked "marked" "NW cor II Co on E side
for NW corner of Irion County at 1300 vrs Cross fence
at 1720 cross fence.

- 10 M At 10 Miles set rock in ground on the North bank
of Borrell Creek marked on the W side "R. Co. 4, 10 M"
on E Side II Co 4, whence a mesquit 7 in dia brs
West 2 inches a do 8 in brs N 86 W 10 inches at 20 vrs
S bank of creek. at 72 vrs cross the N.W. line of A. E.
Patton Sur No 1948. at 451 varas N 55 E from its
N.W. Corner at 857 varas Cross west line of said
A. E. Patton Survey 644 vrs S 35° E from its N.W.
Corner at 1900 vrs.
- 11 At Eleven Miles set rock in ground marked on
West Side "R Co 4, 11 M" & on the E side "II Co 4 (on top
of hill) at 11 miles & 1312 vrs x road (Co E + W) at 1332 vrs
a point whence Hicksons house is East 350 vrs at
1673 vrs cross the South line of survey No 40 T.C. R.R. Co
237 vrs East of a rock mound made for its S.W. Corner
- 12 M At 12 miles set a rock in ground marked on W side
"R Co 4, 12 M" on E Side "II Co 4" on the S.H. Harris sur
No 1 in mesquit flat
- 13 M At 13 mile set rock in ground marked on W side
R Co 4 on E Side I Co 4. at 922 vrs cross the North line
of No 1938 A. F. Kupper Sur 335 vrs E of a rock mound
the N.W. Corner of Sur No 1938, at 1800 vrs cross the
San Angelo and Stiles Road set rock in the ground
marked "Co 4, I N E (on N side of Road) whence the most
Southern S W corner of of sur No 1 S.H. Harris is
1479 vrs West and 689 vrs South, (a stone mound) at
- 14 M At Fourteen miles set Rock in ground in mesquit
Valley marked on West side "R Co 4, 14 M" on E side I Co 4
at 14 miles and and 640 varas cross Centralia Creek
(on Middle Concho River) marked trees on both sides \equiv

- 15M At 15 miles Set rock in ground on the North side of high hill near top mkd "R Co L 15 M on W side + "I Co L" on E side.
- 16M At 16 Miles Set Rock in ground marked on the west Side "R Co L 16 M on E Side I Co L in Prairie
- 17M At Seventee mile Set rock in ground in the East end of a lake marked on West side "R Co L 17 M on E side "I Co L at 12 miles and 922 vrs cross the north line of survey No 3049 - 33 vrs E of its N. W. Cor (a rock mound)
- 18M At Eighteen miles set a rock in ground (in valley) marked on W Side "R. Co L 18 M" on E Side I Co L at 1340 vrs cross a road (Co E + W)
- 19M At 19 miles Set a rock in ground marked on W side "R Co L 19 M at 19 miles and 240 vrs a point whence a rock set in ground mkd "S. E. Cor 30 56" brs S 88 $\frac{3}{4}$ W 377 vrs, at 1440 vrs pass 63 vrs East from the North W corner of survey No 56, a rock marked "N W Co 56" at 1458 vrs pass 63 vrs E of S W cor of said No 4 T P Ry Co B 1
- 20M At 20 miles a rock set in ground mkd on W side R Co L 20 M on E side I Co L at 20 miles and 1458 vrs pass 200 vrs E of a Wind Mill.
- 21M At Twenty One miles Set a rock in ground marked on W Side "R Co L 21 M" on the East side "I Co L" (close to hills) at 540 vrs cross Bull pasture North fence at 1458 vrs cross the S line of survey No 81 Block No (1) T. P. R. R. Co 739 vrs West from its S. E. corner a rock set in ground mkd "S. E. Cor 81"
- 22M At 22 miles Set a rock in ground marked on the West side "R Co L 22 M on the E. side "I Co L" (in valley.)
- 23M At 23 miles a rock set in the ground marked on the W Side "R Co L 23 M on the E. Side "I Co L" at 23 miles and 400 vrs cross a drain Co E + W about 400 vrs W of a large lake
- 24M At 24 miles Set a rock in the ground in prairie marked on the West Side "R. Co L 24 M" on the East side "I Co L" at 24 miles and 489 vrs cross Sherwood and Stiles road (mail line) Set rock on North side "Co LINE at 592 vrs cross Big Lake road
- 25M At Twenty five miles Set a rock in a flat marked on the West side "R Co L 25 M," on the E Side "I Co L" at 25 miles and

- 25M 1459 vrs cross the South line of Survey No 133 Block No 1
T.P. R. R. Co. 759 vrs West from a rock mkd "N. W cor 139"
- 26M At 26 Miles set rock in ground marked on W side "R Co L 26 M"
on the E side "I Co L" At 920 vrs pass 100 vrs West of a round point
of Mountain at 1720 vrs pass on E side of another side of mt
- 27M At 27 miles set a rock in a Runcone Marked on the W side
"R Co L 27 M" on the E side "I Co L" On side of Mountain at
570 vrs made a rock mound on top of mountain 100 vrs W
of its East point whence the "S" Rancho house brs N 38 $\frac{3}{4}$ E at
920 vrs cross a fence Co (E + W).
- 28M At 28 miles set a rock in ground marked as usual at
28 miles + 45 vrs cross creek course E + W.
- 29M At 29 miles set rock in ground marked on W side "R Co L 29 M"
on E. side "I Co L"
- 30M At 30 miles set a rock in ground mkd on W side "R Co L 30 M"
on E side "I Co L" at 1280 vrs cross Fayet Tankersleys
fence Co (E + W)
- 31M At 31 Miles set rock in prairie marked as usual
- 32M At 32 Miles set rock in prairie marked on W side
"R Co L 32 M on E side I Co L.
- 33 At 33 miles set a rock in ground marked on west side "R Co L 33 M"
said rock is 50 vrs N 59 $\frac{1}{2}$ W from F Tankersleys shallow well and
Wind mill (in draw) at 1458 vrs cross the South line of
Survey No 237 Block No 1 T.P. R. R. Co. 791 vrs West from
its S.E. Corner.
- 34M At 34 miles set a rock in valley marked on W side "R Co L 34 M on
E side "I Co L" at 1307 vrs cross Ruckers North fence on the
North line of Survey No 4 University land block No 43. + on
S line of sur. in name of M. L. Kwoon (made rock pile under fence)
- 35M At 35 set a rock in ground marked on W side "R Co L 35 M" on
E side I Co L at 903 vrs cross Big Lake road (Co E + W set rock on
S side mkd "Co LINE at 960 vrs. cross a branch (Co S.E. + N.W.)
- 36M At Thirty Six mile set a rock in a branch in swag marked
on W side "R Co L 36 M" on the E side "I Co L" whence the North
East corner of sur No 7 U. V. land brs North 593 vrs and
1014 vrs (an old stone mound on ground)

- 37 M At 37 miles Set rock in ground marked on W side "R Co L 37" on E side "I Co L" (in prairie)
- 38 M At 38 miles set rock in ground marked on W side "R Co L 38 M" on E side "I Co L" at 400 varas cross the West side of McQuinn tank 400 varas West from wind mill and 150 varas E from his house at 1307 varas cross South line of survey No 17 University land Block No 43. - 1113 varas West from a rock mound made for the N.W. cor of sur No 23 + S.E. Corner 17 Same block
- 39 M At 39 miles Set a rock in the ground marked on the west side "R Co L 39 M" on the E side "I Co L" at 39 miles and 585 varas Set a large Rock in the ground 4 feet high, marked on the West side "S E COR R Co" and on the East side "S.W. COR I Co" Whence a mesquite 12 in dia brs S 60 E 153 varas mked \equiv a do 10 in dia marked \equiv brs N 49 E 81 1/2 varas a do 8 in in dia marked \equiv X brs N 29 3/4 W 130 varas. Said rock is 1181 varas South and 1113 West from an old rock mound made for the N.E. corner of Survey No 24 State University land block No 43. and is 731 varas West from a rock set in the ground marked on South side "B. Co L 18 M" on N. side "T.G. Co L"

We the undersigned Surveyors do hereby certify that the foregoing is a true and correct Report of a boundary line between The Counties of Reagan and Irion as surveyed by us Sept 5th to the 11th 1904

A. B. Tarver

Surveyor for Reagan County

J. M. Garson

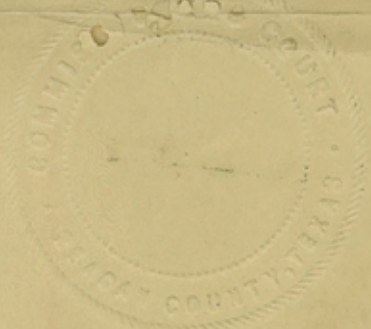
Surveyor for Irion County

J. B. Lucas
District and County Clerk
Reagan County

STILES, TEXAS.

1905.

State of Texas,)
County of Reagan.) I, J. B. Lucas, Clerk of the County
Court and Ex-Officio Clerk of the Commissioners Court, in
and for said County and State, hereby certify that the
foregoing is a true and correct copy of the original as
the same appears of record in the Minutes of Commissioners
Court, Reagan County, Texas, Vol. 1, Pages 78-79-80-81-82+83
Given under my hand and ~~XXXXXXXXXXXX~~ and seal of
said Court this 6th, day of May, 1905.



J. B. Lucas
Clerk Commissioners Court, Reagan Co.
Texas

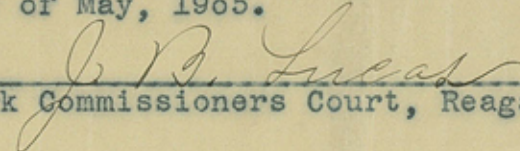
Bp

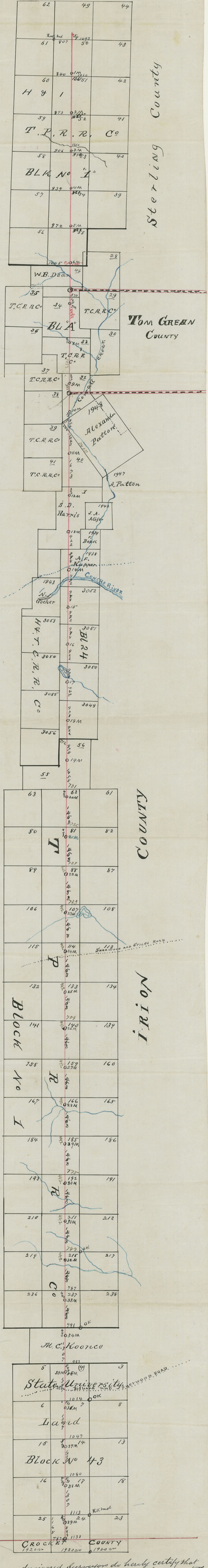
Reagan Co. Balty Line 16

counter 58168

State of Texas,)
County of Reagan.) I, J. B. Lucas, Clerk of the County Court
and Ex-Officio Clerk of the Commissioners Court, in and for said
County and State, hereby certify that the foregoing is a true
and correct copy of the original as the same appears of
record in Vol. 1, page 77, Minutes of Commissioners Court,
Reagan County, Texas.

Witness my hand and the seal of the Commissioners Court of
said County, this 6th day of May, 1905.


Clerk Commissioners Court, Reagan Co. TEX



We the undersigned Surveyors do hereby certify that the foregoing is a true and correct sketch of the boundary line between the Counties of Reagan, Iron part of Tom Green and Sterling as surveyed by us Sept the 5th to the 11th 1904

H. B. Tarver
Surveyor for Reagan County

J. M. Carson
Surveyor for Iron County

East Line of Reagan Co. 754

Reagan County Line
Iron County Line
County 58170