

Reagan Co Bdry ~~X~~ Line 1c

REAGAN COUNTY

~~File~~ BOUNDARY LINE FILE

CONTENTS

South Line of Reagan Co. Class

No. ....

(Part of the North Line of Crask et al. Co.) County

No. ....

(1) Field Notes

No. ....

(2) Sketch

No. ....

..... Certificate No. ....

No. ....

No. ....

No. ....

No. ....

No. ....

No. ....

No. ....

No. ....

No. ....

No. ....

No. ....

Mgl. ....



To the Hon. Commissioners Court of Reagan County

In pursuance of an order of your Hon Court issued the 11<sup>th</sup> day of July 1904 appointing me to survey the County lines of Reagan County and directing me to commence at the S.W. Corner of Midland County on the 1<sup>st</sup> day of September A.D. 1904

I herewith submit the following Report of the survey of the South line of Reagan County on the north line of Crockett County

I began at the South East corner of Reagan County the same being the South West corner of Irion County on the North line of Crockett County. a large rock set in the ground marked on W side. S.E. Cor. R Co on the East side S.W. Cor. I Co whence a mesquite 12 in dia. brs S 50 E 153 vrs mhd  $\frac{7}{8}$  a do 10 in dia brs N 49  $\frac{3}{4}$  E 81  $\frac{1}{2}$  vrs  $\frac{3}{4}$  a do 8 in dia brs N 29  $\frac{3}{4}$  W 130 vrs  $\frac{7}{8}$  x said rock is 2289 vrs West from a corner made by W B Taylor for the S E cor of West Tom Green County

Thence West at 787 vrs cross the West line of Survey no 24 Block No 43 University Surveys 1168 vrs South from its North West corner at 1169 vrs pass a rock set in the ground on Crockett County line marked on S. side C Co L 19m on the N side T G Co L at 1900 vrs set Rock in ground marked on North side "R Co line I M" on S side "E Co L" (in Mesquite flat)

Thence West at 707 vrs cross the West line of Survey no 25 Blk 43 "U V" land 1135 vrs S of its N.W. corner at 1169 vrs pass rock marked C Co L 20<sup>m</sup> on S side at 1900 vrs set rock in Mesquite flat marked on N side "R Co L 2m

Thence West at 827 vrs cross West line of Survey no 21 Block 48 State "U V" land 1102 vrs S of its N W corner at 1169 vrs pass rock in ground mhd on S side C Co L 21<sup>m</sup> at 1900 vrs set Rock in ground mhd on North side "R Co L 3m Thence West at 847 vrs cross the East line of Survey no 23 1069 vrs South from its N.E. corner at 100 vrs cross Rucker fence

(1)  
South Line Reagan

Reagan Co Bdly Line 1c



4 m At 4 mi set Rock in ground marked on North Side  
R Co L 4 m on S Side C Co L

Thence West 867 vrs cross W line of sur no 23 Block No 48  
Stat U V land 1034 vrs S of its N W corner at 1169 vrs  
pass a rock set in ground mkd of South Side C Co L 23 m

5 m at 1900 vrs set rock in ground marked on North Side  
R Co L 5 m in mesquite flat

Thence West at 887 vrs cross west line of sur no 24 Block  
No 48 U V State land 1003 vrs south of its N. W. corner at  
1100 vrs cross draw 200 vrs S of a lake at 1900 vrs set  
a Rock in ground in mesquite flat marked on N side

6 m R Co L 6 m

Thence West 907 vrs cross the west line of Sur No 25 = 970 vrs  
S from its N W corner at 1169 vrs pass a rock set in  
ground marked on S Side C Co L 25 at 1900 vrs set rock

7 m in ground marked on North Side R Co L (7) m

Thence West at 927 vrs cross the East line of sur No 13  
Block No 49 State University land 937 vrs south from  
its N W corner at 1169 vrs pass rock set in ground  
on the East side of road 1 course N E + S W) mkd on S  
Side C Co 26 m at 1900 vrs set stone in ground of E

8 m side of hill on North edge of Cedar thicket marked on  
North Side R Co L 8 m

Thence W at 947 vrs cross the west line of survey  
no 14 Blk No 49 State University land 904 vrs south  
from its N W corner at 1169 vrs pass rock set in  
ground marked on S Side C Co L 27 m at 1900 vrs

9 m set Rock in ground on E Side of ravine (to N W + S E)  
+ 100 vrs E of this East side of a Mountain marked on N Side  
R Co L 9 m

Thence west crossing ravine at 30 vrs at 947 vrs cross  
the West line of Survey No 15 Block 49 State University land  
871 vrs south from its N. W. corner (whence the S W corner of  
Sur No 15 Blk 49 is south 1029 vrs found one bearing tree standing  
with old marks to wit: Mis 9 N 550 W 37 vrs and a stump Brs  
N 60 E 46 vrs another stump brs N 72 1/2 E 60 1/2 vrs) at 1169 vrs



pass rock pet in ground mkd "C Co L 28 m at 1900 vrs  
 pet stone in ground marked on the north side of R.  
 Co L "10 m" on Side C Co L (on the E side a Branch Cedar brush)

11 m Thence west 987 vrs cross the W line of survey no 1 Georgetown  
 R R Co 535 vrs from a stake and mound (old) made for the  
 N W corner of Saint (at fence) at 1900 vrs pet rock in mesquite  
 flat marked on the north side R Co L 11 m

12 m Thence west at 347 vrs cross the west line of survey in name  
 of D L Carver and the east line of survey no 24 Block no 12  
 State University land 650 vrs South from N E corner of sur  
 no 24 Block 12 U. V land (a rock mound) at 1169 vrs pass a rock  
 pet in ground marked on south side C Co L 30 m on north side  
 T G Co L "at 1900 vrs pet in mesquit flat marked on N side R Co

13 m L 12 m on S side C Co L. Thence west at 347 vrs cross the west  
 line of Survey no 24 Blk 12 U. V land 650 vrs S of its N W  
 corner at 1169 vrs pass rock pet in draw mkd C Co L 31 m at  
 1900 vrs pet rock in ground on the north side of hill marked  
 on N side R Co L 13 m

14 m Thence west a 347 vrs cross west line of survey no 23 Block  
 12 State University land 650 vrs South of its N W corner at  
 1169 vrs pass rock pet mesquit flat marked C Co L 32 m  
 at 1900 vrs pet rock in ground on hill South of Haws  
 Roucher house marked R Co L 14 m

15 m Thence west a 347 vrs cross west line of sur no 22 Block no 12  
 650 vrs South of its N W corner at 1169 vrs pass a rock pet  
 in ground mkd C Co L 33 m at 1900 vrs set rock in  
 ground (on the west side of a Rocky Cedar hill) marked on N  
 side R Co L 15 m on South side C Co L

16 m Thence west a 250 vrs cross a branch (Co S x N) at 347 cross the  
 West line of Sur No 21 at 1169 vrs pass rock pet in ground  
 mkd C Co L 34 m at 1900 vrs pet rock in ground on the west  
 bank of branch (Co N W & S E) marked R Co L 14 m and C Co L  
 on S side

17 m Thence West at 347 vrs cross west line of Sur No 20 Blk 12 U V land  
 at 1169 vrs pass rock pet in ground mkd C Co L 35 m at  
 1900 vrs pet rock in ground



Thence west 1400 vrs cross road Co (N W + S E) at 1169 pass Rock  
in ground marked C Co L 34 m 1900 vrs pet rock in Prairie  
18 m marked on N Side R Co L 17 m on S Side C Co L

Thence west at 347 vrs cross west line of Sur No 23 Blk No 7  
State University land 650 vrs S of its N W corner at 1169 vrs  
pass Rock pet in ground mkd C Co L 38 m at 1900 vrs pet Rock  
14 m in ground marked R Co L 19 m and on S Side C Co L at

Thence west at 347 vrs cross west line Sur No 22 Blk No 7  
650 vrs S of its N W corner at 900 vrs cross roads (Co N + S) at  
1169 vrs pass a rock marked C Co L 39 m at 1900 vrs set  
20 m Rock in flat marked on N side R Co L 20 m on S Side  
C Co L in Prairie Thence west at 347 vrs cross west  
line of Survey No 21 = 650 vrs S of its N W corner at 1169  
20 m vrs pass rock pet in ground marked C Co L 40 m at  
1900 vrs rock pet in mesquit flat marked on the north side  
R Co L 21 m

Thence west at 347 vrs cross west line of Survey No 20 Block  
No 7 University land 650 vrs S of its N W corner at 1169  
20 m vrs pass a rock pet in ground marked C Co L 41 m at 1900  
vrs pet a rock in ground marked R Co L 22 m on the  
South side C Co L

Thence west at 347 vrs cross west line of Survey No 19 Blk No 7  
State University land 650 vrs S of its N W corner at 1169  
23 m vrs pass a rock pet in ground marked on S Side C Co L 42 m  
at 1900 vrs pet Rock in flat (60 vrs E of a deep break on E Side of  
Mountain) arked on N side R Co L 23 m on S Side C Co L Thence  
west at 40 vrs cross deep break (Co N + S) 300 vrs South from its  
24 confluence with live ~~lake~~ ~~draw~~ at 1169 vrs pass rock (pet in ground  
marked on S Side C Co L 43 m (40 vrs S of live fak draw) at 1900 vrs  
set Rock in ground on small point at North point of a high  
Mountain in S. Side of main Draw of live fak creek marked  
on north Side "R Co L 24 m on S side C Co L

Thence west at 347 vrs cross west line of Survey No 19 Blk State  
25 m University land 650 vrs S from its N W corner at 1169 vrs pass  
Rock marked C Co L 44 m at 1900 vrs set a rock in open place  
in drawer marked on N Side "R Co 25 m" on S Side C Co L whence



A wind mill brs N 74 1/2 W do brs N 73 about 500 vrs a Poplar tree at tank brs N 75 wa point of hill brs N 72 E n point of Range of mountain brs S 62 3/4

26m Thence west at 347 vrs cross west line of Sur No 20 Block No 6 State U V land 650 vrs S from its N W corner at 1169 vrs pass a rock marked C Co L 45 m whence Wind Mill brs N 74 E about 250 vrs a do N 57 E at 1900 vrs set a rock in ground marked

27m on North Side R Co L 26 m on S Side C Co L Thence west at 347 vrs cross W line of Sur no 21 Block 6 State U V land 650 vrs S from its N W corner at 1169 vrs pass rock set in Live Oak Draw marked on N side "R Co L 27 m" on the South side "C Co L"

28m Thence west at 347 vrs cross west line of survey no 22 Block No 6 State U V land 650 vrs S from its N. W. corner at 1169 vrs pass a rock set in ground marked on S Side C Co L 47 m

at 1900 vrs set a rock in draw of Live Oak Creek marked on North side R Co L 28 m on S Side C Co L Thence west at 347 vrs cross the west line survey no 23 Block No 6 State U. V land 650 vrs S of its N W corner at 1169 vrs pass Rock set in ground marked C Co L 48 m at 1900 vrs pass rock set in ground

29m marked on N side S W cor T G Co 30 m on S Side C Co L at 1900 vrs set a rock in ground marked on north side "R Co L 29 m" on S side C Co L

30m Thence West 347 vrs cross W line of Sur No 24 Block No 6) 650 vrs S of its N W corner a rock md at 1900 vrs set large rock 3 1/2 feet high on N Side of Slope of Hill marked on N. E Side "S. W. Cor R. Co" On the west side S E Cor Upton Co for South West Corner of Reagan Co whence a bush on center of a small round hill brs S 72° E a wind mill in draw brs N 19° E, the E Point of high hill brs S 12° W, a block Pt at ridge on N side of Mountain range brs South, the south point of a mountain brs S 55° E surveyed Sept 11th to 18th 1904

Elmer Mason }  
Charles Reynolds } chairman

Respectfully  
H. B. Farver  
Surveyor appointed by Reagan Co  
to survey Reagan Co line

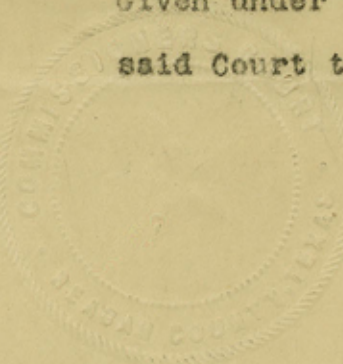


J. B. Lucas  
District and County Clerk  
Reagan County

STILES, TEXAS.

1905.

State of Texas, )  
County of Reagan. ) I, J. B. Lucas, Clerk of the County  
Court and Ex-Officio Clerk of the Commissioners Court, in  
and for said County and State, hereby certify that the  
foregoing is a true and correct copy of the original as  
the same appears of record in the Minutes of Commissioners  
Court, Reagan County, Texas, Vol. 1, Pages 85-86-87+88  
Given under my hand and ~~xxxxxxxxxxxx~~ and seal of  
said Court this 6th, day of May, 1905.

  
J. B. Lucas  
Clerk Commissioners Court, Reagan Co.  
Texas

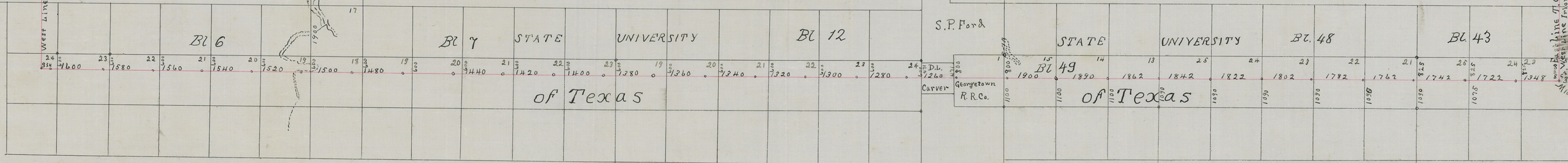
Reagan Co. Bathy Line 1c

count 58177



West Line T.G. Co.

Greison Spring  
Georgetown  
R.R. Co.



East Line T.G. Co.  
West Line Irion Co.

South Line  
Pecos Co.

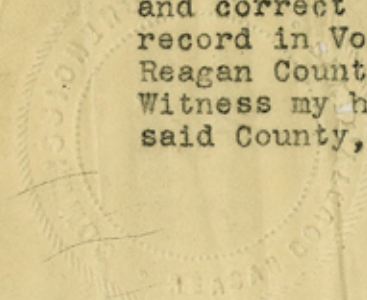
33 Miles + 582 Vrs.

cont 58178



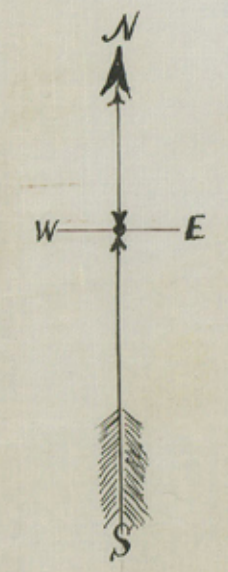
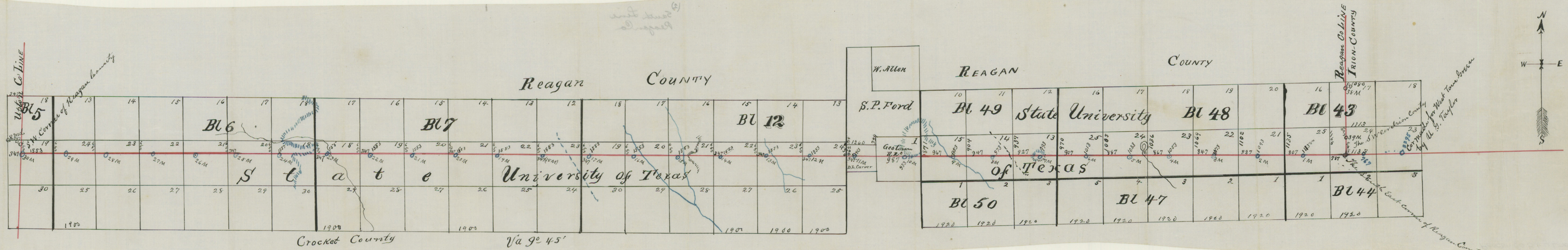
State of Texas, )  
County of Reagan. ) I, J. B. Lucas, Clerk of the County Court  
and Ex-Officio Clerk of the Commissioners Court, in and for said  
County and State, hereby certify that the foregoing is a true  
and correct copy of the original as the same appears of  
record in Vol. 1, page 84, Minutes of Commissioners Court,  
Reagan County, Texas.

Witness my hand and the seal of the Commissioners Court of  
said County, this 8th day of May, 1905.

  
J. B. Lucas  
Clerk Commissioners Court, Reagan Co. Texas



I the undersigned Surveyor do hereby  
 Certify that this is a true and correct  
 Sketch of the boundary line between  
 the Counties of Crockett and Reagan as  
 Surveyed by me Sept 11<sup>th</sup> to 18<sup>th</sup> 1904  
 N. B. Farver  
 Surveyor for Reagan County



Via 90° 45'

Crockett County

cont. 58180

10B