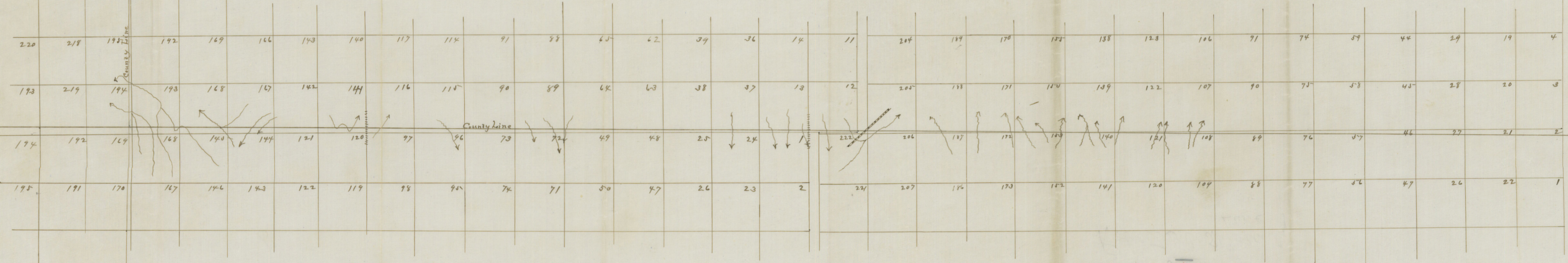


227	211	202	180	176
226	212	201	186	178
225	213	200	187	174
224	214	199	188	173
223	215	198	189	172
222	216	197	190	171
221	217	196	191	170

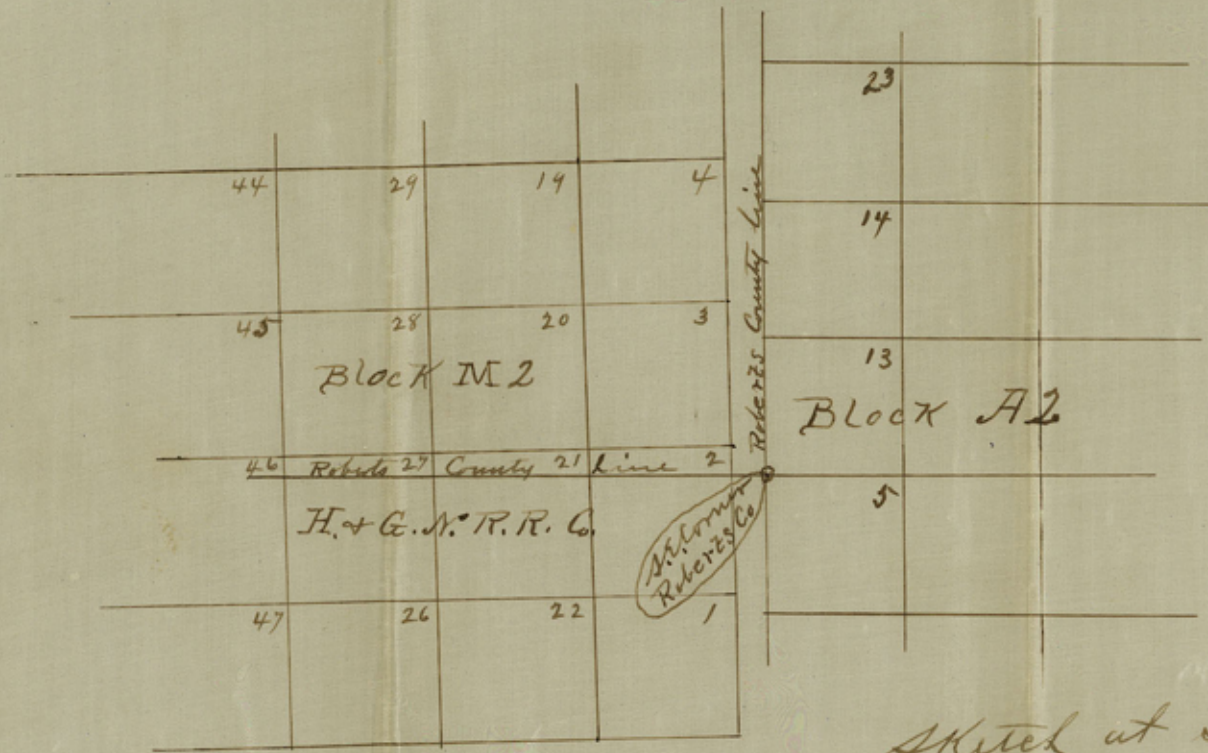
D. W. P. Hedgecock, County Surveyor of Roberts County, do hereby certify that is a true and correct map of the South Boundary line of Roberts County as located by me on the ground, on May 15th. to May 30th. 1899

W. P. Hedgecock
County Surveyor
Roberts Co.
Texas

Scale 2000000. to 1 inch



Roberts County Texas



Sketch at s.e. corner of
 Roberts County
 W. P. Hedgecock
 Co. Surveyor
 Roberts Co. Tex

S.W. Corner Roberts Co.

221	217	196	191	170						
220	218	195	192	169	166	143	140	117	114	91
143	219	194	193	168	167	142	141	116	110	90
194	192	169	168	148	144	121	120	97	96	73
195	191	170	167	146	143	122	119	98	95	74

Roberts Co.

Roberts County Line

Sketch at S.W. Cor. Roberts Co.

W.P. Hedgecock

Co. Surveyor

Roberts Co.

cont. 58365

10

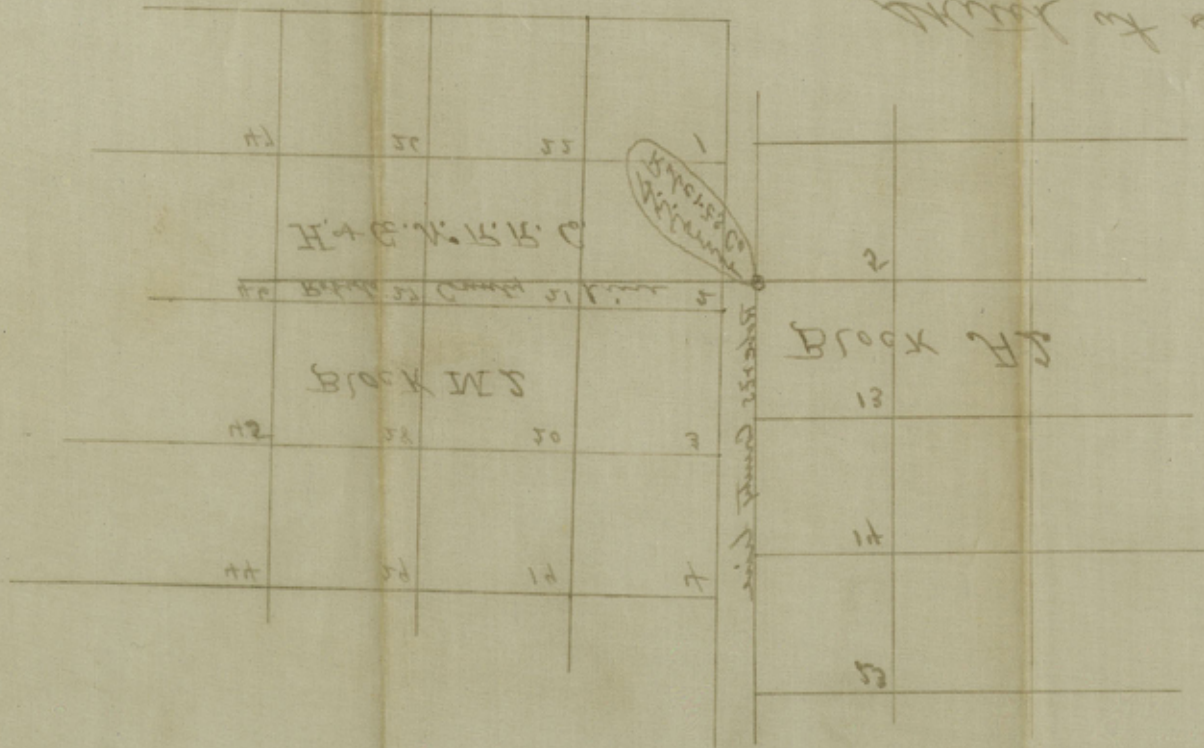
1872

Roberts Co Bdry Line 2c

~~9~~
1

I propose to build
House at
Wagonport
N. of
Roberts Co. Bdry
Line

June 1872



28302

Roberts Co ~~10~~ Bdry Line 2c
1

to ...
to ...
to ...

61728

142	141	130	131	140	143	152	144	145	146	147	148
140	142	141	142	141	142	141	140	141	140	141	142
141	142	141	142	141	142	141	140	141	140	141	142
142	141	140	141	142	141	140	141	140	141	140	141
141	142	141	142	141	142	141	140	141	140	141	142
142	141	140	141	142	141	140	141	140	141	140	141
141	142	141	142	141	142	141	140	141	140	141	142
142	141	140	141	142	141	140	141	140	141	140	141

to ...

to ...

S. W. Cramer
Rt 2 Co.