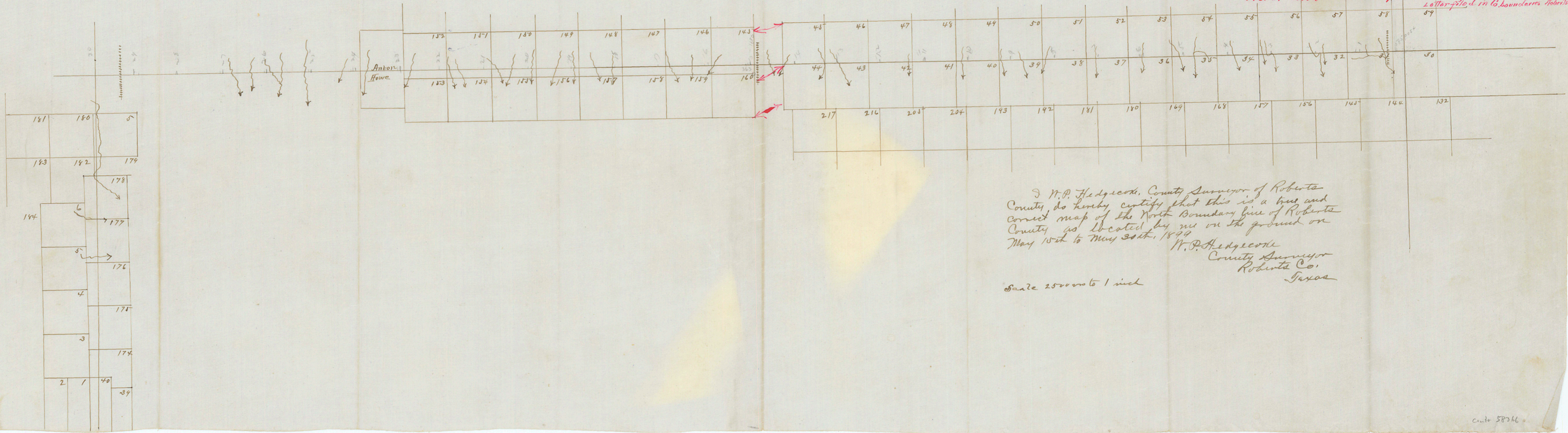


See letter of W.P. Hedgecocke Co. Sur. 8/24/99
 stating that he identified on the ground the
 N.W. Cor. Sur 59 Bl. 43 at a distance of 1928 vs
 N and 838 vs W of N.W. Cor. Hemphill Co.
 Also found N.W. Cor 44 Bl 43 - 14 miles + 1545
 vs. W and 18 vs S. fr. N.E. Cor. Roberts Co.
 Letter filed in Co. boundaries Roberts



I W.P. Hedgecocke, County Surveyor of Roberts
 County, do hereby certify that this is a true and
 correct map of the North Boundary line of Roberts
 County as located by me on the ground on
 May 15th to May 30th, 1899
 W.P. Hedgecocke
 County Surveyor
 Roberts Co.,
 Texas

Scale 25000 to 1 inch