

Boundary line
between the Co of
Kaufman Co. Bdry. line
Kaufman
and ~~4~~
Rockwall

* Filed Oct 4th 1882

Filed Nov 24th 1883

Filed Dec 8th 1885

For Correction of Abstract
see Record of Co line
Page 150 - 1884
Beamont

* See Kaufman Co. Bdry.
Co. Line between Kaufman
and Hunt Co.

The State of Texas.

General Land Office.

Austin October 3rd 1883

P. M. Lewis Esq

Special Sur. Kaufman Co

G. A. Truitt Esq

Special Sur. Roestwall Co

Gentlemen

I have your reports of disagreement as to the boundary line between your Counties and so far as I can determine the law and facts from the information in my possession you should begin your line at the S.E. corner of Roestwall County being in the S.E. line of Elizabeth Graves about 1400 varas N 45° E from his South Corner, thence west to a point in the John Scott Survey about 680 varas west of his East line and 350 varas South of his North line, this line is marked on the map of Roestwall County which I herewith inclose and which line you are hereby instructed to run and mark

Respectfully

M. C. Walsh

Comr

The State of Texas } To the Honorable
County of Roexwall } County Court of
Roexwall County:

I submit to you
the following report:

After receiving the
appointment as special Surveyor to run
the line between Kaufman and Roexwall
Counties, beginning at the South East
corner of Roexwall County and give
bond, and swear as required, I went
on the 30th day of July A.D. 1883 the time that
was specified in the order to run the line.

There I met with P. M. Lewis Special
Surveyor from Kaufman County and
we disagreed as to the true corner of
Roexwall County and we referred
our disagreement to H. C. Walsh Com-
missioner of the General Land Office
of the State of Texas. After receiving
our instructions from Commissioner
Walsh which is hereto attached we set
the 23rd day of October A.D. 1883 to run
the line under said instruction, I ~~met~~
with P. M. Lewis at the time and place we
had agreed upon and Mr Lewis claimed
that we had instructions from the Com-
missioner to stop the survey for a time
I had direct instructions from the

Commissioner to run and mark the line and unless I get further instructions directly from the Commissioner I believe that I am duty bound to run said line.

Mr Lewis said he would protest against the survey at that time, and I proceeded at once and run the line.

First, I run a line west to the Dallas County line then I found that I had failed to hit the point that was described in our instructions, run North of it 263 yrs. I then at once to correct back and we have the field notes here attached.

Field Notes of the County line between Rockwall and Kaufman Counties

1st Mile.

Beginning at the S. E. corner of Rockwall County it being situated on the S. E. line of the Elizabeth Graves survey of 26 labors 1400 yrs N 45° E from its South corner, a post from which post oak 18 in diam yrs N 26 3/4° E 40 2 1/2 yrs dis, another post oak 20 in diam yrs N. 27 1/2° E 39 3 1/2 yrs dis. another 16 in diam yrs N 41 N 45 1 dis., thence West 1660 yrs we find that we are about 206 yrs North of the line River by Brewer & Barnes

1900³/₁₀ vs first mile post on South side
of small drain, from which a double
post oak 20 in diam brs N 49¹/₂ W
271¹/₁₀ vs dis, an elm 11 in diam brs S 88 W
249¹/₅ vs dis.

2nd Mile.

Beginning at the first mile post, thence
West, 79 vs the S. W. line of the E. Graves
survey of 26 laborers, 1400 vs N 45 W of
the South Corner of said survey, 1160 vs
N. E. line of E. S. Boyd survey No. 22 and
S. E. line of the Juan Cassillas survey No
106 - 1900³/₁₀ vs second mile post, from
which an elm 8 in diam brs N 50 E 170
vs dis, in ravine, an elm 12 in diam brs
N 5¹/₂ W 136¹/₂ vs dis

3rd Mile.

Beginning at the 2nd mile post, thence
West 754 vs Whitaker Crobtree S. W. line
90 vs S 45 W from the East corner of said
Crobtree Survey No 40, 962 vs enter timber
on big High point Creek course South
1046 vs High point Creek course N
1125 vs High point Creek course S, 1145
vs High point Creek, up said creek
without crossing, 1170 vs leaves creek and
enters the prairie, 1900³/₁₀ vs Third mile
post - from which a post oak 24 in
diam brs S 88¹/₂ E 360 vs dis.

4th Mile.

Beginning at the 3rd Mile post
Thence West 510 vs Terrell and Rockwell
road course S.E. & N.W., 900 vs N.E. line
of the Stephenson survey no 36: 365 vs
S 45 E from the north corner of said Ste-
phenson survey, 1130 vs branch course
S, 1406 Jared Stephenson N.W. line, 365 vs
S 45 W from the N corner of said Stephe-
son survey no 35: 1900 $\frac{3}{10}$ vs, 4th Mile post,
in Mr Hales farm no brs. near.

5th Mile.

Beginning at the 4th Mile post, Thence
West 1110 vs enter timber 1180 vs branch
4 vs wide course S, 1747 Brushy creek
Course S.W. 1900 $\frac{3}{10}$ vs 5th mile post, from
which an elm 5 in diam brs N 58 $\frac{1}{2}$ W
 $\frac{2}{5}$ or a Hackberry 6 in diam brs N 48 $\frac{1}{10}$ W

6th Mile.

Beginning at the 5th mile post, Thence
West 90 vs enter prairie 645 vs branch course
S.E. 1640 vs branch course S.E. 1900 $\frac{3}{10}$ vs
6th Mile post in Powers' farm from which
a Hackberry 12 in diam brs N 43 E 169 $\frac{4}{5}$
vs branch

7th Mile.

Beginning at the 6th mile post, Thence ^{West} 1900 $\frac{3}{10}$
vs through farms, 7th Mile post in
Mr Hunter's farm no brs near.

8th Mile

Beginning at the 7th Mile post, thence West 1608 rs branch course North, 1900 $\frac{3}{10}$ rs 8th Mile post on high prairie from which an elm 12 in diam brs N 10 $\frac{1}{4}$ W 155 $\frac{3}{10}$ rs.

9th Mile.

Beginning at the 8th mile post, thence West 600 rs enter timber and track 1660 rs, enter timber in Buffalo bottom 1810 rs the bed of long branch 1900 $\frac{3}{10}$ rs 9th Mile post in Buffalo bottom, from which a triple *Quercus* are 10-10-5 in diam brs due W 1 r.

10th Mile.

Beginning at the 9th mile post, thence West 455 rs to the bed of Buffalo Creek 1060 rs Small branch course S.E. 1380 rs the S.E. line of the Joshua Gaunter survey 1900 $\frac{3}{10}$ rs 10th Mile post in prairie from which an elm 8 in diam brs N 88 W 65 rs dis, an elm 10 in diam in ravine brs S 52 $\frac{1}{2}$ W 53 $\frac{1}{2}$ rs dis.

11th Mile.

Beginning at the 10th mile post, thence West 145 rs, Horney and Roestwall road 285 rs enter timber 1693 rs the S.W. line of Joshua Gaunter and the N.E. line of the G.B. Paschall survey 1900 $\frac{3}{10}$ rs 11th mile post in a thicket from which an elm 12

in. diam. lvs N 88 W 42 rvs dis.

12th Mile.

Beginning at the 11th mile post, thence West 210 rvs a triple elm 5-5+10 in diam 431 rvs branch course S. W. 663 rvs East line of the J. Briscoe survey 342³/₁₀ rvs of the S. E. of the said Briscoe survey 1900³/₁₀ rvs 12th mile post on ridge in East fork bottom from which a pin oak 16 in diam. lvs N 81 W 8¹/₂ rvs, water oak 10 in diam lvs S 33 W 9¹/₂ rvs.

13th Mile.

Beginning at the 12th mile post, thence West 286 rvs the N. W. line of the J. Briscoe survey of 225 acres, and the S. E. line of the R. Boles survey, 386 rvs, East fork of Trinity river, course South, 515 rvs big blough, 861 rvs Bois d'arc 20 in diam line tree 1832 rvs an ash 6 in diam. line tree 1879 rvs an elm 8 in diam line tree 1900³/₁₀ rvs 13th mile post on West side of East fork of Trinity river from which a pecan 12 in diam lvs S 80¹/₄ W 5²/₃ rvs, a water oak 12 in diam lvs ~~South~~ 75 West 8¹/₂ rvs dis.

14th Mile.

Beginning at the 13th mile post, thence west 24 rvs water oak 24 in diam line

Tree 186 vs S. W. corner of Roestwall County
on Dallas County line, 350 vs South of
the North line of the John Scott survey
of 320 acres from which a water oak
18 in dim vs S 79 1/2 W 7 1/2 vs. Water oak
10 in dim vs N 22 1/2 W 7 vs dis.

Surveyed Oct 29th, 30th & 31st and Nov
1st and 2nd A D 1883

W's marks X Chain carrier. } G. A. Truitt
Side line ≡ J. S. Hewitt } Special Surveyor
Frank Hewitt } for Roestwall Co.

I, G. A. Truitt Special Surveyor for
Roestwall County hereby certify that the
above is a true copy of the field
notes taken on the ground on the line
of said survey, that the distances bearings
and marks as therein set forth are
correct.

Given under my hand at Roestwall
Roestwall County Texas this Nov 5th
day 1883

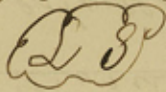
G. A. Truitt

Special Sur. for
Roestwall County 2d

The State of Texas }
County of Roestwall } J. W. D. Barringer
Clerk County Court of said County
do hereby certify that the above in-
strument of writing dated on the 5th day

of Novr A.D. 1883 at 5 o'clock P.M. and duly
reared the 20th day of Novr AD 1883
at 11 o'clock A.M. in records of said
County in Vol. "5" on pages 613, 14, 15, 16
and 617.

Witness my hand and seal of the County
Court of said County at office in
Rockwall the and year last above written



H. D. Barringer

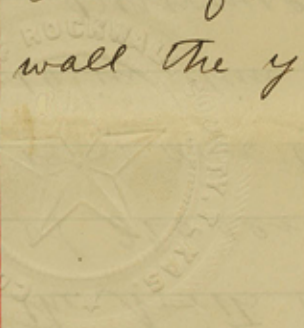
Clerk C. C. Rockwall Co 24

The State of Texas
County of Rockwall J. W. D. Barringer
Clerk County Court in and for said
County hereby certify that the foregoing
is a correct copy of map and report
of survey of the county line of
Rockwall and Kaufman Counties
as reported by G. A. Truitt Special
Surveyor for Rockwall County.

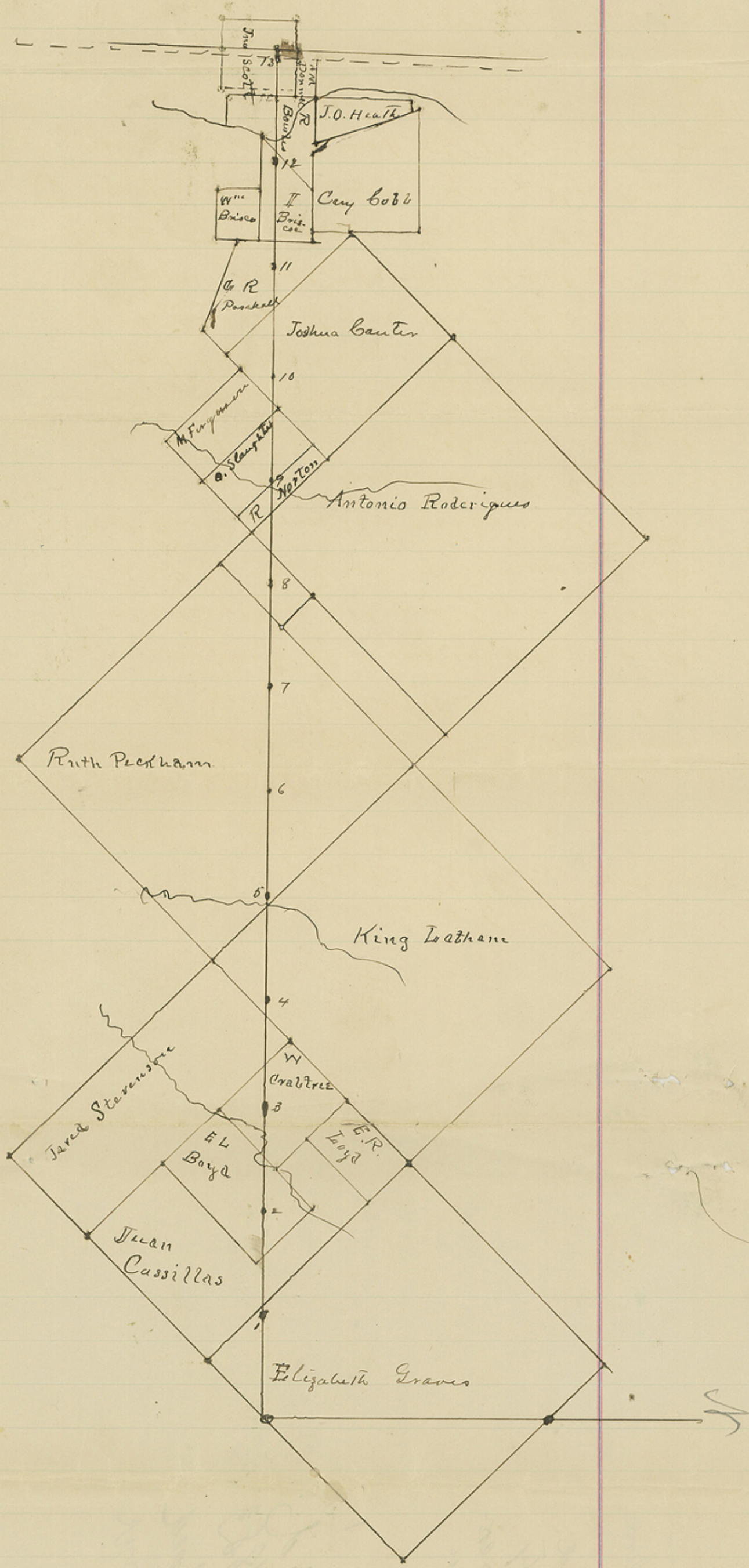
Witness my hand and seal of the County
Court of said County at office in Rock-
wall the year last above written

H. D. Barringer

Clerk Rockwall Co 24



#1



cut copy for

Rockwall Co Bary Line 52

W Hallen

~~46~~ 46

~~Kaufman Co. Bdry line~~

certified copy

Field notes and
Map of County
line between Rock-
wall & Kaufman
Counties. 2400

Received & filed
Nov 24. 1883

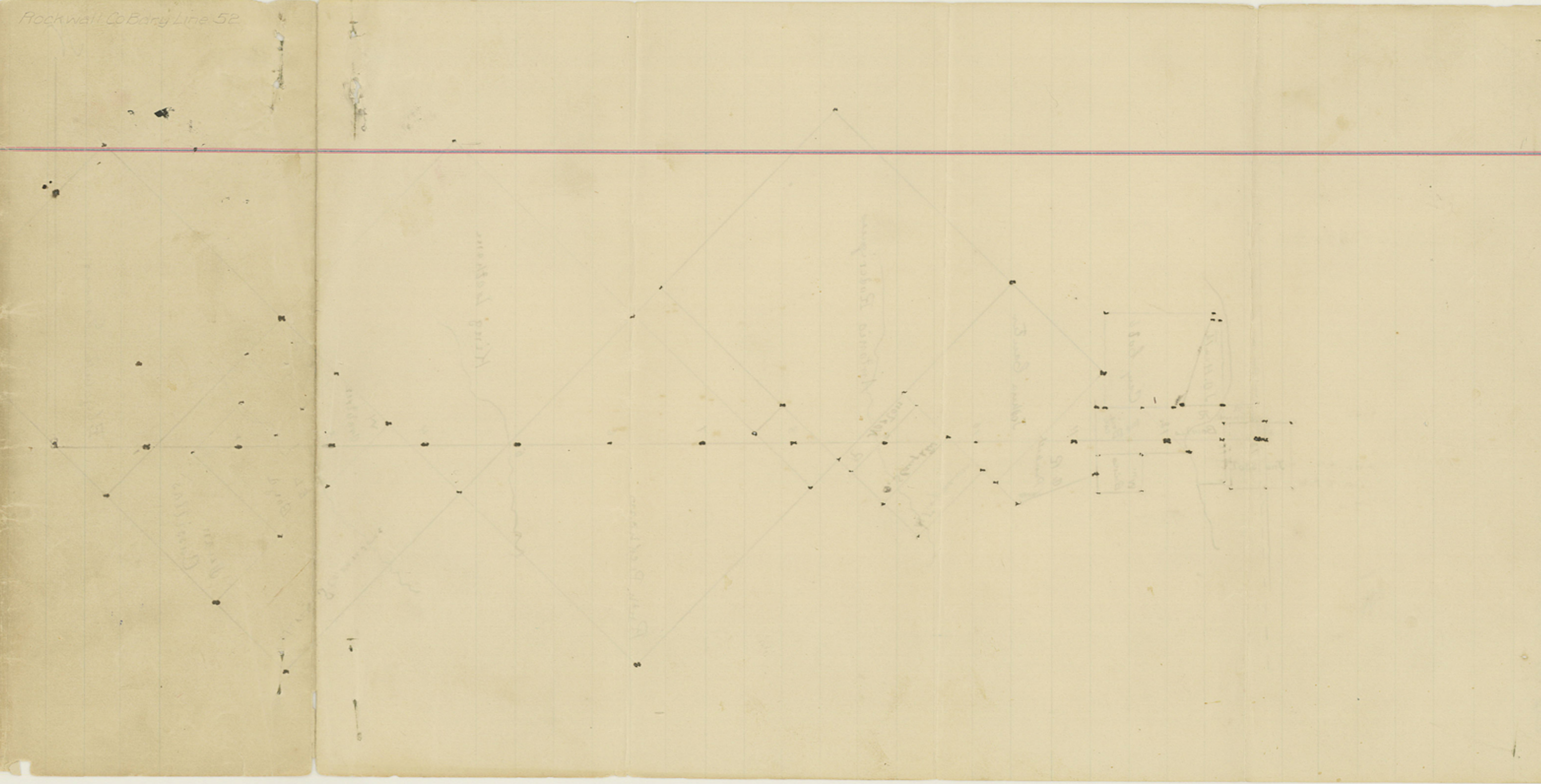
W Hallen
Comr

Trull's No. 53

See letters filed

165156

165192 (2)



09485 mt