


The State of Texas }  
 County of Rockwall } Court Rockwall  
 } County 24 Aug Term 1885

Whereas it has come to the knowledge of the county Commissioners Court of Rockwall County Texas that the boundary line between the counties of Rockwall and Kaufman is not sufficiently defined. It is therefore ordered by the Court that G. A. Truitt be appointed as special surveyor whose duty it shall be to ascertain by actual survey, the boundary between said counties and that the surveyor herein appointed shall commence the survey of said line on the 24<sup>th</sup> day of November A.D. 1885 and shall commence at the South East corner of Rockwall County and run west to the line of Rockwall and Dallas Counties and the clerk of this Court is hereby ordered to notify the County Commissioners Court of Kaufman County as provided by law.

The State of Texas }  
 County of Rockwall } J. W. D. Barringer  
 Clerk of the County Court in and for  
 said County hereby certify that the  
 foregoing is a correct copy as the

same appears of record in the minutes  
of Commissioners Court of said County  
pages 243 & 244.

Given under my hand and seal  
of office this 23<sup>rd</sup> day of November  
A.D. 1885.  W.D. Barringel  
Clerk Co Court R Co Tex

The State of Texas }  
County of Rockwall } -

To the Honorable County  
Court of Rockwall County:

I submit the following report:

After  
receiving the appointment as special  
surveyor to run the line between the Coun-  
ties of Rockwall and Kaufman and gave  
bond and being sworn, on the 24<sup>th</sup>  
day of November 1885, the time specified  
in the order to begin work, I went to  
the S.E. corner of Rockwall County, and  
the surveyor from Kaufman Co failed  
to come and at ten o'clock I began  
work, beginning at the South East cor-  
ner of Rockwall County the same being  
on the South East line of the E. Graves  
survey of 26 Robors, 1400 varas N45°E  
of the south corner of said E. Graves  
survey established by G. A. Truitt on

the 29<sup>th</sup> day of October 1883 by virtue of instructions issued by the Commissioner of the General Land Office of the State of Texas to P. M. Lewis Special Surveyor of Kaufman County and G. A. Truitt Special surveyor of Rockwall County on the 3<sup>rd</sup> day of October 1883, I proceeded at once to run the line and make field notes thereof, which is hereto attached marked exhibit A and to which reference is here made and made a part of this report, also append hereto a map of said line of Rockwall and Kaufman Counties and marked exhibit B as part of this report.

G. A. Truitt Special  
Surveyor Rockwall Co

The foregoing report subscribed and sworn to before me on this 28<sup>th</sup> day of Nov 1885.

E. C. Heath Co Judge  
Rockwall Co 24

The foregoing report with map and field notes examined and approved in open Court on this the 28<sup>th</sup> day of Nov 1885

E. C. Heath Co Judge

J. A. Hartman }  
C. W. Darr }  
J. E. Hutchinson }  
J. W. Peyton }

Commissioners

attest:  
W. D. Barringer  
Co Clerk

Field Notes of the County line between  
Rockwall and Kaufman Counties.1<sup>st</sup> mile.

Beginning at the South East corner of  
Rockwall County, it being situated on  
the S.E. line of the Elizabeth Graves survey  
of 26 Labors, 1400 rs N 45° E from its  
South corner a post ~~from~~ which a post  
oak 18 in diam brs N 26 $\frac{3}{4}$ ° E 40 $\frac{1}{2}$  rs  
dist, post oak 20 in diam brs N 27 $\frac{1}{2}$ ° E  
39 $\frac{1}{2}$  rs dist, another post oak 16 in  
diam brs N 41 N 45 rs dist, thence west  
1660 rs, we find that we are about 206  
varas north of the line run by Brewer  
and Barnes 1900 $\frac{3}{10}$  rs first mile post  
on the South side of a small branch from  
which a double post oak 20 in diam.  
brs N 49 $\frac{1}{2}$  N 27 $\frac{1}{2}$  $\frac{10}{10}$  rs dist an elm  
11 in diam brs S 88° N 249 $\frac{1}{5}$  rs dist

2<sup>nd</sup> mile.

Beginning at the first mile post  
thence West 79 rs the S.W. line of the E  
Graves survey of 26 Labors 1400 rs  
N 45 N of the South corner of said survey  
1160 rs N.E. line E. L. Boyd survey No 22  
and S.E. line of the Juan Cassillas survey  
No 106, 1900 $\frac{3}{10}$  rs Second mile post  
from which an elm 8 in diam brs N 50° E  
170 rs Dist in ravine, an elm 12 in diam

line N 5 1/2 W 136 1/2 dist;

3<sup>rd</sup> mile

Beginning at the second mile post  
thence West 754 vs Whitaker Crooktree  
S.W. line 90 vs S 45 W from the East Cor-  
ner of said Crooktree survey No 40-962  
vs enter timber on big High Point Creek  
976 vs High Point Creek course South  
1046 vs High Point Creek course North 1125-  
vs High Point Creek course South 1145-  
vs High Point Creek, up said creek  
without crossing 1170 vs leaves creek  
and enters the high Prairie 1900 8/10 vs  
third mile post from which a post  
Oak 24 in diam hrs S 88 1/2 E 360 vs dist

4<sup>th</sup> mile

Beginning at the third mile post,  
thence West 450 vs Terrell and Roesswall  
road course S.E. and N.W. 900 vs N.E. line  
of Stevenson survey No 35, 365- vs S 45 E  
from the north corner of said Steven-  
son survey 1150 vs ravine course South  
1406 vs Jared Stevenson N.W. line 365- vs  
S 45 W from the north corner of said  
Stevenson survey No 35-1900 8/10 vs 4<sup>th</sup>  
mile post in Mr Hale's farm no hrs near

5<sup>th</sup> mile

Beginning at 4<sup>th</sup> mile post, thence  
west 1110 vs enter timber 1180 vs branch  
4 vs wide course South, 1747 Brushy  
Creek course S W 1900 8/10 vs fifth

Mile post from which an elm 5 in diam hrs N 58 1/2 West 2/5 rrs a hawberry 6 in diam hrs N 4 E 4/5 r dist.

6<sup>th</sup> mile.

Beginning at the fifth mile post, thence west 90 rrs enter prairie 645<sup>m</sup> branch course S.E. 1640 rrs branch course S.E. 1900 8/10 rrs. Sixth mile post in Powers' farm from which a hawberry 12 in diam hrs N 37 E 169 4/5 rrs on branch.

7<sup>th</sup> mile

Beginning at the sixth mile post thence west 1900 8/10 rrs through farms, seventh mile post in Mr Hunter's farm no hrs near.

8<sup>th</sup> mile

Beginning at the seventh mile post thence west 1608 rrs branch course north 1900 8/10 rrs eighth mile post high prairie from which an elm 12 in diam hrs N 10 1/4 W 155 8/10 rrs dist.

9<sup>th</sup> mile

Beginning at the eighth mile post thence west 600 rrs enter timber and bush 1660 rrs enter timber in Buffalo Bottom 1810 rrs the bed of Lang branch 1900 8/10 rrs ninth mile in Buffalo bottom from which a triple hoisdsore 10, 10 x 5 in diam br due west 1 r.

10<sup>th</sup> mile

Beginning at ninth mile post, thence west 455 rrs bed of buffalo creek 1060 rrs small branch course S.E. 1380 rrs

the S.E. line of the Joshua Coater survey, 1900<sup>8/10</sup> vs tenth mile post in prairie from which an elm 10 in diam, in ravine, brs S 52 1/2 W 53 1/2 vs dist.

11<sup>th</sup> Mile

Beginning at the tenth mile post, thence west 285 rods enter timber 1693 vs the S.W. line of Joshua Coater survey and the N.E. line of the G.R. Pascall 1900<sup>8/10</sup> vs eleventh mile post in the ditto from which an elm 12 in diam brs N 88 W 42 vs dist.

12<sup>th</sup>

Beginning at the eleventh mile post, thence west 210 rods, a triple elm 5, 5 & 10 in diam 431 vs branch course S.W. 663 vs E line of the J. Briscoe survey 342<sup>8/10</sup> vs of the S.E. corner corner of said Briscoe survey 1900<sup>8/10</sup> vs 12<sup>th</sup> mile post ridge in East fork of Trinity bottom from which a pin oak 16 in diam brs N 81 W 84<sup>1/10</sup> vs rods, a water oak 10 in diam brs S 33 W 94<sup>1/10</sup> vs dist.

13<sup>th</sup> mile

Beginning at twelfth mile post thence west 286 rods the N.W. line of the Briscoe survey of 225 acres and the S.E. line of the Roland Balis survey, 386 rods East Fork of Trinity river course

515 vs big blough 861 vs live oak  
 20 in diam live tree, 1832 vs an ash  
 6 in diam live tree 1900 8/10 vs thir-  
 teenth mile post on the west side  
 of East fork of Trinity from which  
 a pecan 12 in diam hrs S 80 3/4 W 5 3/5  
 vs vs a water oak 12 in diam  
 N 75 W 8 1/10 vs dist.

14<sup>th</sup> mile

Beginning at thirteenth mile post  
 thence west 24 vs water oak 24 in diam  
 live tree 186 vs South west corner  
 of Rockwall county on Dallas Co line  
 350 vs South of the north line of the  
 John Scott survey of 320 acres from  
 a water oak 18 in diam hrs S 79 1/2 W 7 1/2  
 vs a water oak 10 in diam vs N 22 1/2 W  
 7 vs dist - "Exhibit A"

The State of Texas }  
 County of Rockwall } J. W. D. Barringer  
 Clerk of the County Court in and for  
 Rockwall County Texas hereby certify  
 that the foregoing is a correct copy  
 of order of Commissioners Court of  
 Rockwall County Texas, and the re-  
 port of G. A. Smith Special Surveyor  
 appointed by said Court, and map



of ~~boundary~~ line between the Counties of  
Roestwall and Kaufman Counties  
the same being recorded in Record  
of deeds for Roestwall County Book  
"L" pages 577 to 581 inclusive.

Given under my hand and seal  
of office at office in Roestwall Tex  
this 4<sup>th</sup> day December A.D. 1885.

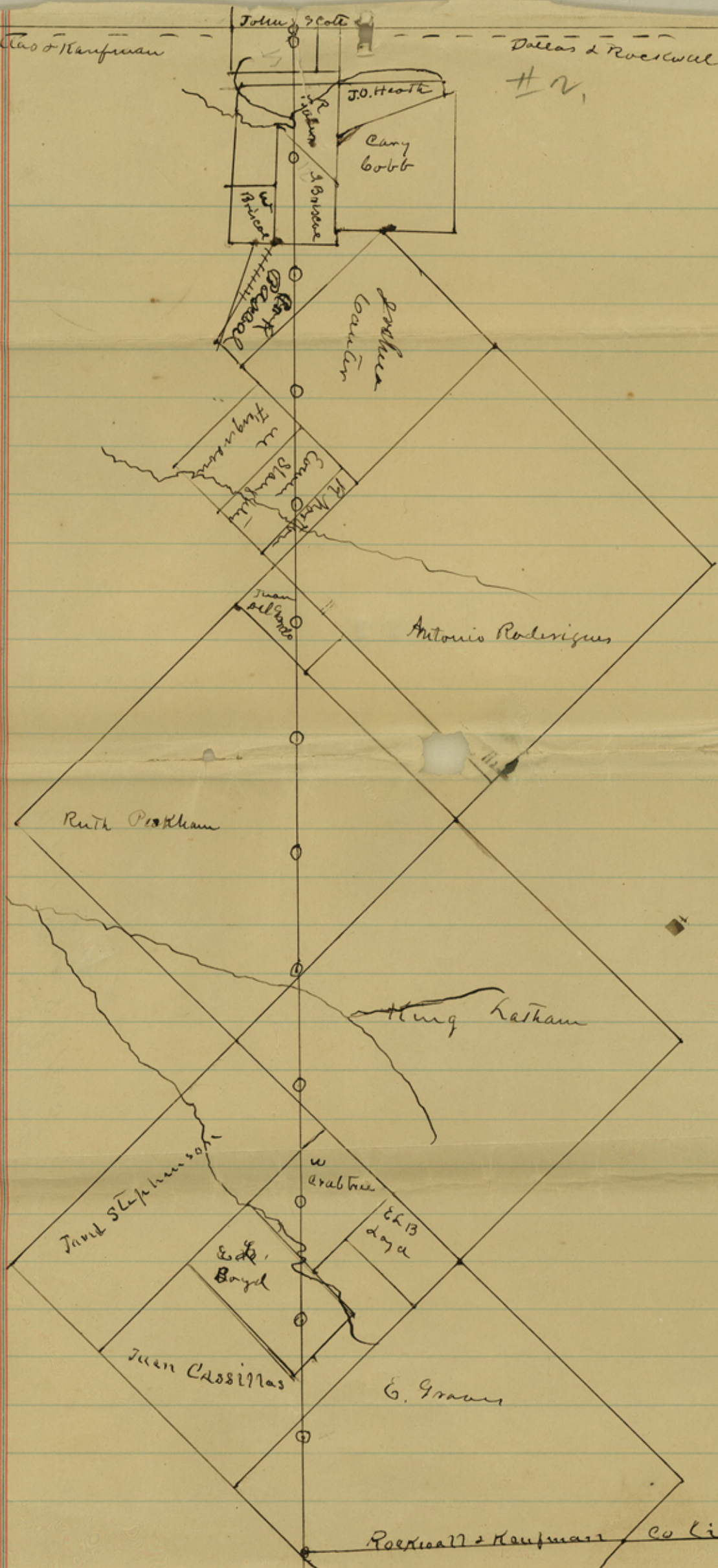
W. D. Barringer  
Clerk of Court Roestwall Co  
Tex

"Exhibit B"

Dallas & Kaufman

Dallas & Rockwall line

# 2,



John Cole  
 J.O. Heath  
 Cary Cobb  
 J. B. Moore  
 B. Moore

John  
 Louder  
 J. B. Moore

John  
 M. Moore  
 M. Moore  
 M. Moore

Antonio Rodrigues

Ruth Prokham

Henry Katham

Jane Stephenson

Ed. Boyd

W. Arabina

Ed. B. Day

Juan Cassillas

G. Graves

Rockwall & Kaufman Co Line

Rockwall Co Bdry Line 52a

Boundary line between  
Rockwall  
and

Kaufman

~~Kaufman Co. Bdry line~~

Filed Dec 8<sup>th</sup> 1885

7a

Hold this up by order  
of the Court

Beaumont

Trutt. Oct. 23.

10

1745  
5897