

Field notes of the south Boundary line of Rockwall County.

To the Hon County Court of Rockwall County.

In obedience to your order made on the 19th day of Dec 1891. at a regular term of the County Court, and E. B. Ashurst was appointed as special surveyor to act in conjunction with such surveyor as shall be appointed by Staunton County to ascertain, establish and mark the south boundary line of Rockwall County which forms a part of the North boundary of Staunton County.

On the 26th day of Jan 1892 the day set out in the order to begin work on said line I went on the ground where I supposed the S. E. corner of Rockwall County was located. I failed to meet the Staunton County surveyor, nor did any one appointed by the Hon County Court of Staunton County appear to assist in running said line and it being the only surveyor in attendance proceeded alone to perform the duties assigned to me and there submit my report of said work.

I proceeded at once to find said corner by preliminary survey, first we went to the third mile Post put up by Barnes & Brewer in 1873 and run East to the second mile Post put up by Barnes & Brewer and this gave us the variation and point to run the line, we continued East to a point south of the S. W. corner of Hunt County as located by Sherwood & Money Dec 13th & 14-1880.

On the 27th Jan 1892 we went to the S. W. corner of Hunt County established by Money and Sherwood Dec 13th & 14-1880. A Post from which a Post Oak 20ⁱⁿ diam brs N 30 E 2 1/2 m. another Post Oak 25ⁱⁿ diam brs west 7 1/2 m. another Post Oak brs due south 6 m marked N. Thence south on first Mile 1783 m. we found.

that we were 15 vrs East of the corner put up by
 H.L. Bryant for the S.E. Corner of Rockwall County
 1900 8/10 vrs. First mile 12 vrs East of the East corner
 of Simpson Estate. Thence south on sec mile
 1327 vrs. S.E. line of the C. Groves and N.W. line
 of Sam Smith L & L 1925 vrs. we intersected a
 continuation of Barnes & Brewers line. This we
 made the S.E. corner of Rockwall County. A Post
 on Smith League from which a Black Oak 14 in
 dim S 49. E 2 3/2 vrs. also a Mesquite 12 in dim brs
 S 31 1/2 W 28 vrs. Thence West on First Mile 600 vrs
 N.W. line of Samuel Smith L & L and S.E. line of
 the C. Groves L & L 1064 vrs from the south corner
 of C. Groves 1900 8/10 vrs First mile Post on C. Groves L
 Thence west on Second Mile 289 vrs C. Groves
 S.W. Line 1060 vrs from south corner 1315 vrs
 E.L. Boyd S.E. line 150 vrs from East corner 1900 8/10
 vrs Sec Mill Post in E.L. Boyd survey.

Thence West on Third mile 1356 S.E. line of Whit-
 -eter Crabtree survey 418 vrs from East corner
 1535 vrs Big high point creek first timber and
 first marks on Barnes & Brewers line 1900 8/10
 Third mile Post from which a Post Oak 25 in dim
 brs N 11 E 12 8/2 vrs

Thence West on Fourth mile 91 vrs Barnes and
 Brewers second mile Post which a large Post
 Oak Marked X brs N 43 E - 920 vrs N.E. line of
 Jared Stephenson survey 750 vrs from North
 corner 1560 vrs Small branch and timber line
 well marked 1900 8/10 vrs fourth mill Post

Thence west on Fifth Mile 70 vrs Barnes and
 Brewers Third Mill Post 100 vrs N.E. line of
 King Latham L & L 1445 vrs Berry Creek 1900 8/10
 vrs Fifth mill Post in Berry creek Bottom from
 which an Elm 12 in dim brs South 71 West 2 vrs
 Dis another Elm brs N 88 E 14 vrs.

26

Hence West on Fifth Mile 102 vrs an Elm
Marked on all sides supposed to be Barnes & Brewer's
fourth Mile Post 245 vrs Bruskey Creek 420 vrs
Prairie Plain Marked line through timber
1900 & 10 sixth mile Post on Branch in Allen's
farm

Hence West on Seventh mile 1900 & 10 a
Post from which three willows vrs S 61. W 12 1/2
vrs.

Hence West on Eighth Mile 1555 vrs S E line
of Juan Dalgarde 200 vrs from East corner
1900 & 10 vrs Eighth mile Post on west bank of
Branch from which an Elm 10 in dim vrs
N 12 E 6 vrs a small Boudance vrs due west
24 vrs.

Hence West on Ninth Mile 45 vrs
Barnes & Brewer 7th Mile Post 400 vrs Timber
on Branch. 800 vrs S E line of Antonio Rodriguez
510 vrs from south corner 1075 vrs N. E. line
of the D Norton survey 1900 & 10 vrs. Ninth
Mile Post on bank of Long Branch from
which an ash 12 in dim vrs N 65 W 4 vrs.

Hence West on Tenth mile 20 vrs Long Branch
240 vrs N. E. line of the Owen Slaughter
survey 600 vrs Buffalo Creek 1075 vrs S. E. line
Joshua Carter 1255 vrs from south corner
1900 & 10 vrs Tenth Mile Post

Hence West on Eleventh Mile 1100 vrs Timber
well marked 1580 vrs N. E. line of the
G. R. Paschal 1100 vrs from north corner 1900 & 10
vrs Eleventh Mile Post in timber from which
in Elm 20 in dim N 07 E 4 vrs an ash 15 in dim
vrs due west 17 vrs.

Hence West on Twelfth mile Through timber
on a well marked line 675 vrs The east line of
J. Brisco survey 550 vrs from N. E. Corner 1900 & 10
vrs Twelfth Mile Post in east Fork Bottom
from which an Ash 30 in dim vrs N 85. W 3/4 vrs

Rockwell Co. Bdy. line # 756

an Oak 7 in dim brs north 4 vrs

Thence West on Thirteenth Mile 400 vrs S.E. line of the R Bowler survey 700 vrs from East corner 1000 vrs East fork of Trinity River 1600 vrs East line of John Scott Survey 1900 to vrs

Thirteenth Mile Post from which an Elm 5 in dim brs N 16 E 4 vrs

Thence west 560 vrs S.W. corner of Rockwall County a Hackberry on Dallas County line marked on three sides, two of the blazes defaced and the other partly gone, but showed the letter C, from which an ash 12 in dim brs S 19 1/2 E 15 vrs and marked $\frac{x}{x}$ an ash 20 in dim brs N 40 E 7 vrs marked $\frac{x}{x}$ known as the Barnes and Brewer corner located on the John Scott Survey 108 vrs from the North line of said survey.

The line before described is the same line established by Barnes and Brewer in 1873 as the original South boundary line of Rockwall County except that it begins about 2000 vrs east of the S.E. corner of Rockwall County as established by Barnes and Brewer as aforesaid. This survey establishes the S.E. corner of Rockwall County two miles and 25 varas South of the S.W. corner of Hunt County as established by Sherwood and Money in 1880.

Running South two miles from the S.W. corner of Hunt County as established by Kiny and Kyser Jan'y 12-13-14 & 1892. will intersect the line herein described at a point 1762 varas West of the S.E. corner of Rockwall herein described and of the S.W. corner of Hunt as established by Kiny and Kyser as aforesaid is the true S.W. corner of Hunt County, the S.E. corner of Rockwall should be established two miles South of the same and will put the S.E. corner of Rockwall

4b.

5

County at a point 1762 vaia west of the
S.E. corner described in the foregoing report.

I E.B. Ashurst special surveyor do solemnly
swear that the foregoing report is correct and
that the lines, corners, and marks therein described
were made by me on the ground, at the
time and in the manner therein stated.

E.B. Ashurst

This is attached to the foregoing report to show
the number of acres of land in each survey in-
tersected by the County line in each County

	Rockwall	Kaufman
Samuel Smith L	32	4570
E David	3624	978
Juan Casler	420	103 1/2
E.L. Boyd	198	
Whitaker Crabtree	375	105
Jared Stephenson	50	1532
King Latham	4474	128
Ruth Peckum	1328	3274
Juan Dalgards	4579	23
R. Norton	70	47 1/2
Owen Slaughter	80	240
Joshua Carter	1199	279
G.R. Pascall	60	
J Pirco	102	
R Bowler	138	184
Jas Scott	17	303

The Within Report, Field Notes and Map
examined and approved and Ordered that
the Same be Recorded

February 11th A.D. 1892
A. R. Hartman

County Judge,

Rockwall Co Texas

Filed for Record the 11th day of February A.D. 1892
at 11.30, Belock A.M.

J. D. Vesbit

County Clerk

Rockwall Co Texas

By W. B. Austin, Deputy.

The State of Texas, $\frac{1}{2}$ J. D. Vesbit, Clerk,
County of Rockwall, $\frac{1}{2}$ of the County Court of said County,
Hereby Certify that the above and foregoing
is a true and correct copy of the
Original Report Field Notes and Map
Now on file in my office

Given under my Hand and
Official Seal at Office in the
Town of Rockwall this 12th day of
February A.D. 1892

J. D. Vesbit,

County Clerk Rockwall Co
Texas

By W. B. Austin,
Deputy Clerk

The State of Texas
Rockwall County

Before me the undersigned authority this day personally appeared A. B. Garduchin, Post Master at Rockwall Texas. Known to me to be the person who he represents himself to be, and known to me to be Post Master at Rockwall Texas, and being by me duly sworn upon his oath deposes as follows. to wit:

J. C. Nesbit County Clerk of Rockwall County, mailed a registered letter addressed to John H. Vasey, County Judge Kaufman Texas, in the Post office at Rockwall Texas on the 31st day of December 1891. That said package left my office at Rockwall on the 31st day of Dec, 1891 and that the receipt for said letter signed by R. H. Armstrong Post Master at Kaufman Texas, was received in my office at Rockwall Texas on the 5th day of January 1892.

A. B. Garduchin
Postmaster Rockwall

Sworn to and subscribed before me at Rockwall Texas. February 12 1892

A. W. Hartman
County Judge Rockwall
County Texas

The State of Texas,

Rockwall County,

I J. A. K. Harrison
County Judge in and for
Rockwall County do hereby
certify, that E. B. Ashurst, was
by me duly appointed, to
ascertain, run and mark
the South boundary line of
Rockwall County which
is also the north boundary
line of Kaufman County.
That said appointment was
made by me in open Court
at December term 1891, and
that the said E. B. Ashurst,
qualified by taking the
oath required by law
as Special Surveyor, and
entered into bond in
the sum of one thousand
dollars which said
bond was by me approved,
witness my hand this the
25th day of February 1892.

J. A. K. Harrison
County Judge
Rockwall County
Texas,

Rockwall Co Bdry Line 75b
The original retraced
bdy between

Rockwall
Kaufman Cos

Filed Feb'y 20th 1892

Abstract Corrected
March 29th 1892
Beaumont

(This Pin used for establishing
SW cor Rockwall Co. on Dallas
Co. E. Line in Company Dallas Co. Rep.
Oct. 26-1892
Morris)

Rockwall Texas Aug 24 192

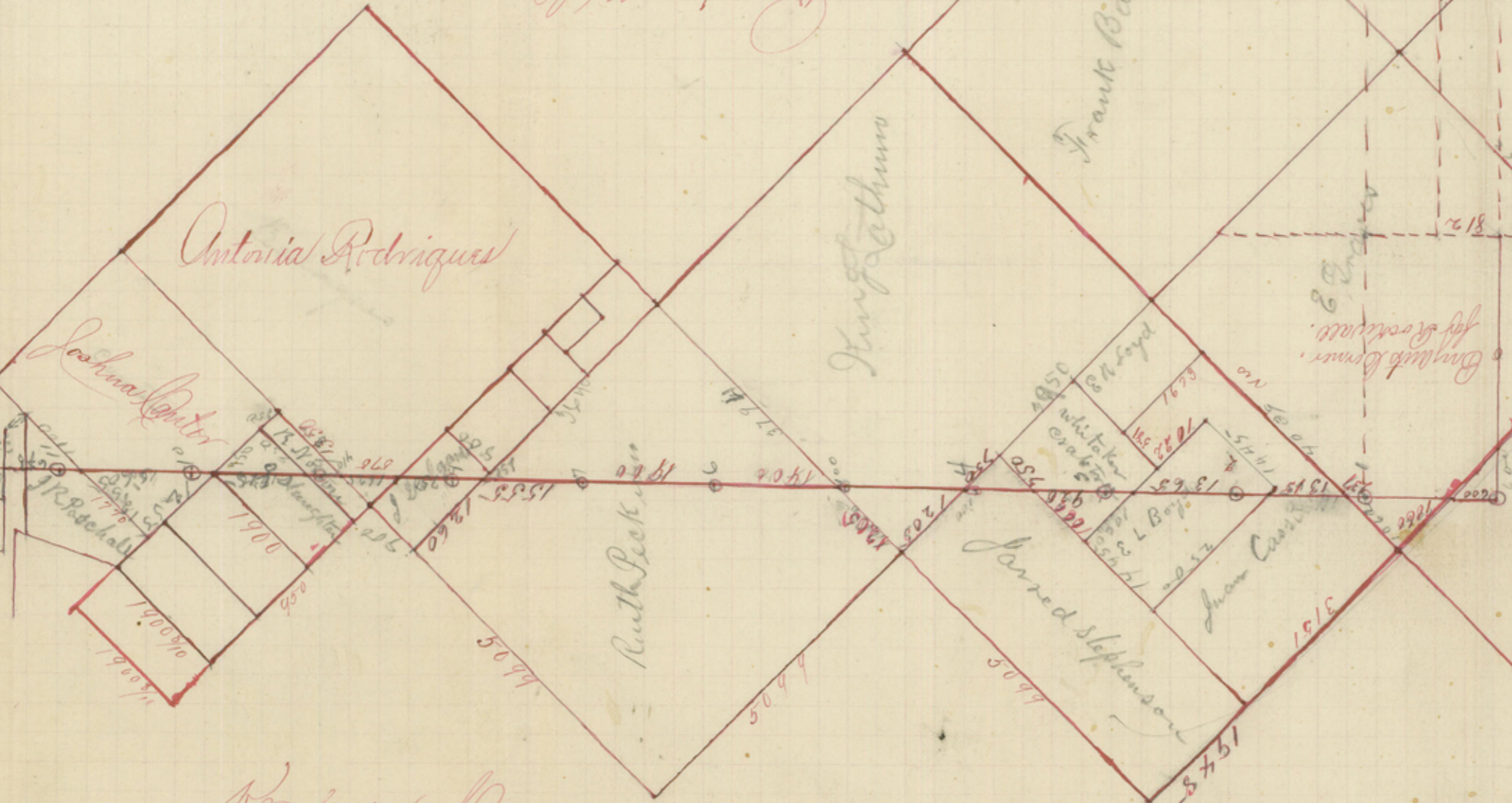
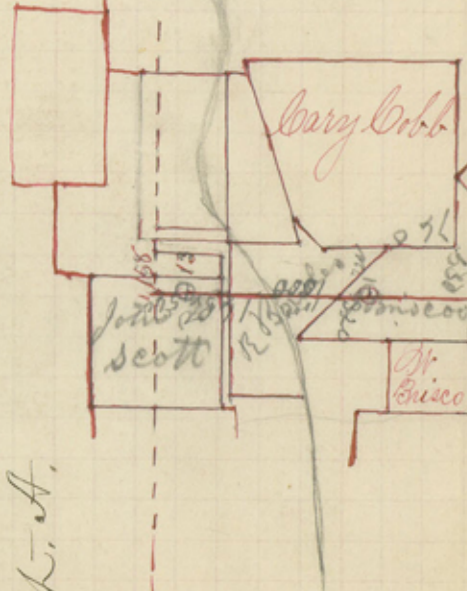
To the Hon Commissioners Court
of Rockwall County whereas I was
appointed to run the South Boundary
line of Rockwall and properly locate
the South East corner thereof on 22nd inst
I proceed to notify the Surveyor of
Kaufman County to meet me and
assist in the same he wrote me
The Commissioners Court of Kaufman
County ignored the order and
therefore he could not participate
I should have proceed ~~to~~ locate
as pr order but on 21st inst
I was served with a writ of injun-
ction restraining me from running
the line I will just say had
there been no hindrance I should
have simply traced ~~to~~ followed the
line located by Brewer & Barnes
at the creation of Rockwall ^{County}
as I proceeded to do last January
of which a full copy of field
notes & plat is on file in the
land office at Austin

E B Ashurst
Special Surveyor
R.C.

Sworn to and subscribed
before me August 24th 1922
A. P. Hartman
County Judge
Rockwall County
Texas

Robb Co

Exhibit A.



Frank Baryellus Co

John Bial

Hunt County

Kaufman Co

[Form 980.]
 DIAGRAM OF _____
 County, _____
 By _____ on the _____
 day of _____ 188 ____
 Insurance Co.
 Of _____

Rockwell