

To the Honorable County Court, |
of |
Runnels and Tom Green Counties, |
State of Texas. |

In compliance with an order issued ^{at} ~~on~~ the Febry Term, 1916 by the Honorable County Court of Runnels County, we J. E. Powell, Special Surveyor for Runnels County, and J. J. Goodfellow, Special Surveyor for Tom Green County, proceed to survey and mark the South line of Runnels County from the S. W. Corner of said Runnels County, East to the N. W. Corner of Concho County which is also a N. E. Corner of Tom Green County, on the date mentioned in said order, to-wit: April the 20th, 1916.

Not being sure of the present location of the S. ~~W.~~ W. corner of Runnels County, we began at Mile post 21 on the South line of Runnels County, being a large stone marked "21 M. R. & C. Co. Line" and firmly set in the ^r ground 63 vs. W. of a branch (Co.S.W.) and 31 vrs. N. of ~~same~~ same branch and about 249 vrs. S. of center line of an E. & W. wagon road.

THENCE, ^{N 89° 46' W} with said County line (as surveyed and marked upon the ground by H. E. Dickinson, County Surveyor of Runnels County in September 1887) the field notes of which are recorded in Vol. 1, page 468-70 Commissioners Court Records of Runnels County and approved by

General Land office on December 21st, 1887), at
1430 vrs. crossed an old fence the "supposed"
W. line of Nichols Pasture on or near the E.
line of W. Co. R. R. Co. Survey No. 158, in
all 1920 6/10 vrs. to the 22nd mile post on
said line a stone marked "22M. R. & C. Co. Line"

THENCE N. 89 degrees 46' W. at
1464 $\frac{1}{2}$ vrs. set a concrete post marked "R. Co. Line"
on N. side and "C. Co. Line" on S. side and "X"
on W. side,, this post is in E. line of a road
and near the W. line of said survey No. 158.
At 1562 vrs. the N.E. Corner of Tom Green and
N. W. corner of Concho County as established
by L. L. Farr in 1891, here we found a large
stone marked "N. E. T. G. C.-June 1891" on one
side and other marks on the other side, this
stone was broken and lying on the ground in
a farm. Here we set a reinforced concrete
post 10"x12" at base, 6"x8" at top and 4 feet
long, marked T.G. Co. N. E. Corner on S. side
and "R. Co. Line" on N. side. Set 3 feet in
ground and one foot above ground, whence said
concrete post marked "X" and set in E. line of road
brs. S. 89°46' E, 97 $\frac{1}{2}$ vs. + mile post 33 on said E. line Tom Green Co.
brs. S. about 1166 vrs, in all 1900 vrs, and
set stake in farm for mile 23. (no original

post found for 23 mile),

THENCE, N. 89 degrees 46' W at
 554 $\frac{1}{2}$ and set a concrete post marked "R. Co.
 Line-3" ^{on} N. side, and "T. G. Co. Line-3" on S.
 side. This post is in the right of way of
 R. R. running from Miles to Paint Rock. At
 559 vrs. center line of said R. R. track at
 1507 and set concrete post marked "R. Co.
 Line-4", on N. side, and "T. G. Co. Line-4"
 on S. side, ^{in W. line of survey 157,} in all 1900 vrs, and set stake
 in farm for 24th mile.

THENCE, N. 89 degrees 46' W
 at 1515 vrs, set a concrete post marked "R.
 Co. Line-5" on N. side and "T. G. Co. Line-5"
 on S. side, at 1523 vrs. crossed the E. line
 of Survey No. 139 W. Co. R. R. Co. 180 $\frac{1}{2}$
 vrs. S. of its N. E. Corner and 1743 $\frac{1}{2}$ vrs.
 N. of its S. E. Corner, in all 1991 vrs to the
 original mile post 25, a stone marked "25
 R. Co. Line" and set in ground.

THENCE, West at 1263 vrs.
 passed near the S. E. Corner of Mr. Hick's
 House at 1425 vrs set concrete post marked
 "R. Co Line-6" on N. side and "T.G. Co. Line
 -6" on S. side, at 1432 vrs. crossed the W.
 line of said survey No. 139, in all 1900 vrs.
 and set stake for 26th mile. (no original post found)

THENCE, West ~~at about 1350~~
~~vrs branch (Co. S. W.)~~ at 1359 vrs. branch
 (Co. S) at 1411 vrs. set concrete post marked

^{7 vrs. of E}
 "R. Co. Line-7" ~~is~~ [^] E. line of survey No. 136 and
 in ~~E.~~ line of road and on S. bank of last
~~mentioned branch Co. E and about 100 vrs.~~
^{and 84 vrs}
 N. of the S. E. Corner of said survey No. 136,
^{and 7 vrs E. and 1833 vrs S. of the original N.E. Corner of said No. 136,}
 in all 1900 vrs and set stake for 27th mile
 in a farm (no original post found).

THENCE, West at 300 vrs draw
^{at 1409 branch}
 (Co. S), at 900 vrs. draw (Co. S) [^] at 1477 vrs.
 W. line of said survey No. 136 in ~~W~~ line of
 road. Set a concrete post marked "R. Co. Line-8"
^{+ on S. bank of same br. (Co E)}
 on N. side and "T.G. Co. Line-8" on S. side, [^] in all
 1900 vrs. and set stake for 28th mile (no original
 post found)

THENCE, West at 1502 vrs. E
 line of road. Set a concrete post marked "R.
 Co. Line-9" on N. side and "T.G. Co. Line-9" on
 S. side. This post is 54 vrs. N. of the S bank
 of Willow Creek and 94 ^{vrs.} ~~vrs.~~ N. of the S bank of a
 branch. At 1509 vrs crossed the E. line of
 Survey No. 67 ~~xxx~~ T. & N.O.R.R. Co-100 vrs N.
 of its S. E. Corner. At 1567 vrs channel of said
 Willow creek (Co. S.E.) in all 1999 vrs to
 original mile post 29. A stone marked "29
 M. R. Co." ^{set in ground}

THENCE West at 178 a concrete
 slab marked "Tom Green County Line" in the S.
 line of San Angelo ~~Ballinger~~ road, at ⁽²²⁶⁾ ~~226~~ vrs.
 set a concrete post in S. line of right of way
 of G.C. & S.F.R.R. said post marked "R. Co. Line-
 10" on N side and "T.G. Co. Line-10" on S. side.

At 310 vrs. center line of said R. R. Track
 at 352 vrs branch (Co. S.E.) at 1512 vrs.
 fence (Co. N.1 degree 35' E), here set concrete
 post marked "R. Co. Line-11" on N side and
 "T.G.Co. Line-11" on S side, in all 1935 to a point
 100 vrs. N. and 475 vrs West of the S. E. Corner
 of survey No. 62 T.& N.O.R.R.Co. this point is
 in a farm, here we set a concrete post for the
 S. W. corner of Runnels Co. The original cor-
 ner stone was lying on the ground about 2vrs. S
 of where we set this post, which we set by the
 side of said concrete corner post. Said con-
 crete post being marked R. Co. S. W. Cor. on N
 side and T.G.Co. Cor. on S. side. This post is *about*
1000 vrs. S. of a branch (general Co. S.E.).

— Signed Map attached, to this report —

Each post set by us is of re-
 inforced concrete 10"x12" at base, 6"x8" at
 top and 4 feet long, set 2 feet in ground and
 2 feet above ground, except the post at N.E. ~~Co~~
 of Tom Green County, which is set 3 feet in
 ground and one foot above ground.

The survey was commenced on
 April 20th and completed on May 6th, 1916.

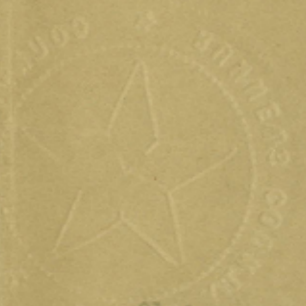
Signed this the 11 Day of May 1916.

J.E. Powell
 Special Surveyor for Runnels Co.

J.J. Goodfellow
 Special Surveyor for Tom Green Co.

Sworn and subscribed to before me by J.E.Powell and
 J.J.Goodfellow this 11th day of May 1916.

O.A. Parish
 County Clerk, Runnels County, Texas.



County Clerk, Runnels County, Texas.

Sworn and subscribed this 11th day of May 1916.

Special Surveyor for Tom Green Co.

J. J. Goodfellow

Filed this 11th day of May 1916

Cert. Loopy
Runnels Co Bdry Line 2

J. J. Goodfellow
Special Surveyor for Tom Green Co.

Sworn and subscribed this 11th day of May 1916.

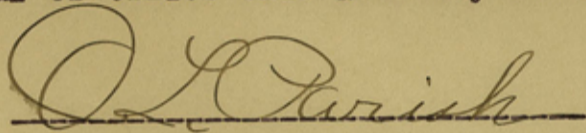
Ground was attached to this report

1000 vrs. S. of a branch (General Co. S.E.).
side and T.G.Co. Cor. on S. side. This post is about
crete post being marked R. Co. S. W. Cor. on N
side of said concrete corner post. Said con-
of where we set this post, which we set by the
ner alone was lying on the ground about 3vrs. S
S. W. corner of Runnels Co. The original cor-
in a farm, here we set a concrete post for the
of survey No. 28 T.A. N.O.R.R.Co. This point is
100 vrs. N. and 475 vrs. East of the S. E. corner
of T.G.Co. This line-11" on E. side, in 1811, 1835 to a point
post marked "T. Co. Line-11" on N side and
found (Co. N.I. degree 35' E), here we set concrete
at 385 vrs branch (Co. S.E.) at 1515 vrs.
At 310 vrs. center line of said R. H. Pasch

The State of Texas |

County of Runnels | I, O.L. Parish, Clerk of the County Court of
Runnels County, Texas, do hereby certify that the above and foregoing
is a true and correct copy of the report of the special surveyors
of Runnels and Tom Green Counties, as same appears of record in
book Vol. 6, Page ~~424~~ 43 --- Minutes of the Commissioners Court of
Runnels County, Texas.

Given under my hand and seal of office this 16th day of June,
1916.



Clerk Co. Court, Runnels County, Texas.

File No. 532

RUNNELS & TOM GREEN COS.

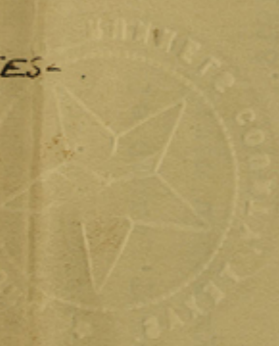
PLAT^{and} FIELD NOTES -
- Part -
OF COUNTY LINE -

Filed June 19th 1916

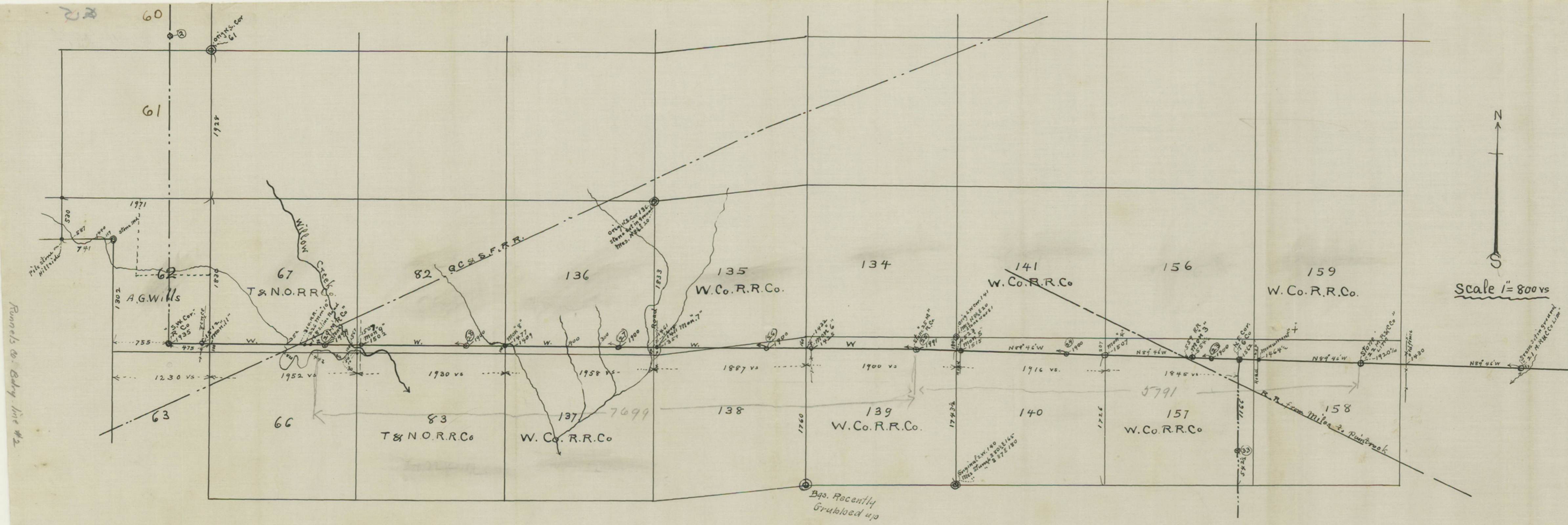
J. P. Robinson

A. C. Clark

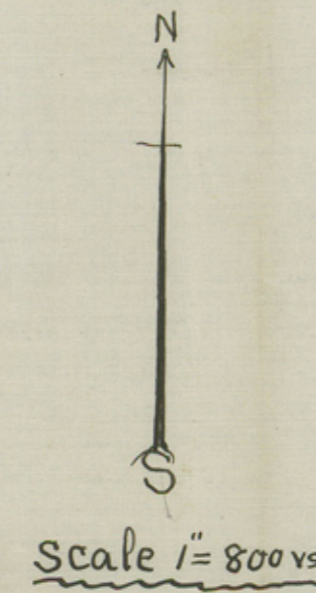
File Clerk.



Cont. 58524



State of Texas }
 Counties of Runnels & Tom Green }
 We J.E. Powell, special surveyor of Runnels Co
 and J.J. Goodfellow, special surveyor of Tom Green Co
 do here by certify that the hereon map correctly represents
 the position of surveys relative to the S. line of Runnels County Texas from its
 S.W. Corner, East to the N.W. Cor. of Concho County, which is also a N.E. corner of
 Tom Green County, as surveyed by us, from April 20 to May 6th 1916, in obedience to an
 order issued by the Hon County Court of Runnels County, Texas at that term
 1916 -
 Given under our hands this the 11th day of May 1916



J.E. Powell
 Special Surveyor for Runnels Co
 J. Goodfellow
 Special Surveyor for Tom Green Co.

Variation -- 10°-15° E
 Donald Powell }
 Roy Scott } Chain Carriers - Duly sworn according to law.

Runnels Co. Bdry. line #2