

THE STATE OF TEXAS  
COUNTY OF SABINE

FIELD-NOTES OF THE BOUNDARY LINE OF SABINE  
AND NEWTON COUNTIES.

Beginning at the

McKim old place, the north-east corner of Jasper county, a post  
and mound of earth.

\*----- Thence North 86 degrees and 15 minutes East, with magnetic variation  
at 7 degrees and <sup>35</sup>~~35~~ minutes East, at 226 varas crossed road leading  
from the residence of Jack Frisby to Brookeland, via Hardy Fergu-  
son's residence, at 362 varas crossed the east or south-east Bdr'y.  
line of the James McKim league, 1370 varas N.41 east from its S.E.  
corner, at 1553 varas crossed the W.Bdr'y. line of Sec.No.1, H. & T.  
C.Ry.Co., same being E.Bdr'y. line of Sec.No.241, H. & T. C. Ry. Co.,  
340 varas south from the north corner of said Sec.No.1, at 1692  
varas crossed the W.Bdr'y. line of the Jesse McGee league 1050 varas  
S.20 E. from the N.W. corner of said McGee league, at 1837 varas  
crossed Clear branch, at 1900.8 varas set post for first mile, at  
2650 varas crossed a branch which runs south-west course, at 3165  
varas crossed a branch which runs a south course, at 3801.6 varas  
mound and post for 2nd, mile, at 3805 varas crossed a branch runs  
a southern course, 4280 varas crossed road on divide for McKim  
and Soapstone creeks, at 4985 varas crossed branch which runs S.E.  
course, at 5207 varas crossed branch which runs S.E. course, at  
5320 varas crossed road leading from the residence of Jack Frisby  
to the John McElroy old place, at 5583 varas crossed Soapstone Creek,  
at 5593 varas Soapstone creek 2nd time, at 5610 varas Soapstone  
creek 3rd time, at 5633 varas Soapstone creek 4th time, at 5702.4  
varas place for 3rd mile post but owing to the fact the measurement  
placed this point in the middle of Soapstone creek there was no  
post set. Marked a tupelo gum, 8 inches in Dia., X S.C., Brs. N.47 E.  
5 varas, a sweet bay 8 inches in Dia. Mkd. X N.C., Brs. S.32 W.3-1/5  
varas, at 5922 varas crossed road leading from Yellowpine to the  
residence of Jack Frisby, at 6322 varas crossed Soapstone creek 6th  
time, at 6762 varas crossed an old road, 6764 varas a beech line  
tree 36 inches in Dia., ~~XXXXXXXXXXXXXXXXXXXXXXXXXXXXXXXXXXXXXXXXXXXXXXXXXXXX~~  
at 6873 varas the middle of Big Sandy creek, 20 varas wide, at

Sabine Co Bdry Line 1

7060 varas Big Sandy creek 2nd time, at 7085 varas Big Sandy creek  
 3rd time, at 7289 varas Big Sandy creek 4th time, at 7323 varas  
 crossed the east Bdr'y. line of the Jesse McGee league, <sup>2300</sup> ~~2200~~ varas  
 N.20 W. from the S.E. Cor. of said McGee league, same being the W.  
 Bdr'y. line of the Wm. S. Kennard league, 2300 varas S. 20 E. from the  
 N.W. Cor. of said Kennard league, at 7363 varas crossed Big Sandy  
 creek the 5th time, at 7400 varas crossed Big Sandy creek 6th time,  
 at 7430 varas crossed Big Sandy creek 7th time, at ~~7403.2~~ 7603.2 varas  
 set 4th mile post, at 7625 varas crossed Big Sandy creek 8th time,  
 at 7833 varas crossed Big Sandy creek 9th time, at 7960 varas ~~83~~  
 crossed Big Sandy creek 10th time, at 8370 varas crossed Big Sandy  
 creek 11th time, at 8415 varas Big Sandy creek 12th time, at 8560  
 varas crossed Big Sandy creek 13th time, at 8974 varas crossed an  
 old road, at 8980 varas struck N. bank of Big Sandy creek at low  
 water line, at 9154 varas crossed Big Sandy creek 14th time, at  
 this point we ran down the channel of the creek for a short distance  
 amounting to the same as crossing twice, at 9460 varas crossed road  
 leading from old turpentine docks to F. McElroy's, at ~~9504~~ 9504  
 varas set 5th mile post. It not being practicable to obtain a ~~pine~~  
 pine post suitable we set a mulberry post here, at 9784 varas road,  
 at 9832 varas road from the residence of Anderson Bowie to Newton,  
 at 9999 varas road, at 10144 varas Hurricane creek 15 varas wide,  
 runs N.E. course, at 10510 crossed survey made for O. & N.W. Ry., at  
 10964 varas Bee Tree branch, runs N.E. course, at 11404.8 varas set  
 post for 6th mile, at 12184 varas branch, at 12544 varas County  
 line branch, runs S.E. course, at 12950 varas crossed the east Bdr'y.  
 line of the Wm. S. Kennard league 527 varas S. 25 E. from the S.W. Cor.  
 of the John Gallion league, same being the W. Bdr'y. line of Sec. No. 14,  
 G. H. & S. A. Ry. Co., at 13166 varas road leading from Hemphill to  
 Burkeville and Newton, at 13292 varas a branch which runs N.E.  
 course, at 13305.6 varas set post for 7th mile, at 13328 varas crossed  
 branch 2nd time, at 13402 varas crossed a branch which runs N.E.  
 course, at 14616 varas branch runs N.E. course, at 14626 varas a  
 branch runs N.E. course, at 14857 varas crossed S. Bdr'y. line of said  
 Sec. No. 14, G. H. & S. A. Ry. Co., 400 varas S. 65 W. from the S.E. Cor. ~~of~~  
 of said Sec. No. 14.

at 15165 varas crossed branch, at 15206.4 varas set post for 8th mile, at 15323 varas crossed the E.Bdr'y.line of Sec.No.13, G.H. & S.A.Ry.Co., 176 varas S.25 E. from its N.E.Cor., also the W.Bdr'y. line of the E.Talley 1/4 league, 1070 varas N.25 W. from said Talley's S.W.corner, at 15935 varas crossed branch, at 16258 varas crossed road leading from the residence of James A.Clark to the residence of C.Bonneau, at 16406 varas crossed the south prong of Big Sandy creek, sometimes called Richland creek, at 16466 varas crossed said creek 2nd time running down the channel of said creek for a short distance and amounting to crossing said creek the 3rd time, at 16586 varas crossed road leading from the residence of James A.Clark to the residence of Joe Clark, at 17107.2 varas set post for 9th mile, at 17267 varas crossed road leading from the residence of J.W.Weaver to the Fairmount & Brookeland road, at 17959 varas crossed the S.Bdr'y.line of the E.Talley 1/4 league 3 varas S.65 W.from the S.E.Cor.of said Talley 1/4 league, at 17962 varas crossed the E.Bdr'y.line of the James English 1/4 league 2 varas S.25 E. from its N.E.Cor., also being the W.Bdr'y.line of Sec.No.1, G.H. & S.A.Ry.Co., crossed said line 412 varas S.25 E.from the N.W. Cor.of said Sec.No.1, situated on the E.Bdr'y.line of said Talley 1/4 league, at 17967 varas crossed branch, course of same being E., at 17997 varas crossed a branch course of which was east, at 18218 varas crossed a branch ~~xxx~~ running in a northerly direction, at 18657 varas crossed branch, course north, at 19008 varas set post for ~~xxx~~ 10th mile, at 19260 varas branch runs north, at 19736 varas branch runs south, at 20066 varas crossed N.Bdr'y.line Sec.No.1, G. H. & S. A. Ry. Co., 186 varas S.65 W. from its N.E.Cor., same being the S.Bdr'y.line of Sec.No.31, T. & N. O. Ry.Co., 126 varas N.65 E. from the S.W.Cor.of said Sec.No.31, (at 19929 varas crossed W.Bdr'y.line of said Sec.No.31, T. & N.O.Ry.Co., 53 varas N.25 W. from its S.W.Cor.,) at 20110 varas crossed branch, runs N., at 20259 varas crossed E.Bdr'y.line of Sec.No.1, G. H. & S. A. Ry.Co., 75 varas S.21 E.from its N.E.Cor., at 20305 varas crossed branch, runs N., at 20432 varas crossed Fairmount & Burkeville road, at 20527 varas branch runs N.E.course, at 20583 varas branch runs N.E., at

20740 varas branch runs N., at 20908.8 varas set post for 11th mile,  
at 20950 varas branch runs N., at 21186 varas branch runs N., at  
21350 varas branch runs S.W., at 21440 varas crossed another road  
leading from Fairmount to Burkeville, at 21672 varas crossed branch  
which runs N., at 22047 varas crossed E.Bdr'y.line of Sec.No.2,  
G. H. & S. A. Ry.Co., 710 varas S.25 E.from its N.E.Cor., same being  
the W.Bdr'y.line of Sec.No.3, G.H. & S.A.Ry.Co., at 22071 varas branch  
runs E., at 22131 varas branch runs E., at 22334 varas branch runs  
N.E., at 22474 varas branch runs N., at 22809.6 varas set post for  
12th mile, at 23353 varas branch runs N.E., at 23727 varas branch  
runs N., at 24153 varas crossed E.Bdr'y.line of Sec.No.3, G.H. &  
S.A.Ry.Co., 339 varas N.25 W.from its S.E.Cor., same being W.Bdr'y.  
line of Sec.No.4, G.H. & S.A.Ry.Co., at 24335 varas crossed road  
leading from the Garlington old place to Fairdale, at 24480 varas  
branch runs S., at 24693 varas crossed road leading from the res-  
idence of Vincent Smith to Fairdale, at 24710.4 varas set post for  
13th mile, at 24980 varas branch runs E., at 25125 varas branch  
runs S., at 25280 varas crossed E.Bdr'y.line of Sec.No.4, G. H. &  
S.A.Ry.Co., 131 varas N.25 W. from the S.W.Cor.of Sec.No.6, G.H. &  
S.A.Ry.Co., at 25340 varas branch runs S.E., at 35554 varas branch  
runs E., at 25590 varas crossed S.Bdr'y.line of Sec.No.6, G.H. & S.  
A.Ry.Co., at a point which is 280 varas N.65 E.from said Sec.No.6's  
S.W.Cor., at 25620 varas branch runs E., at 25950 varas crossed the  
E.Bdr'y.line of Sec.No.5, G.H. & S.A.Ry.Co., 140 varas S.25 E.from its  
N.E.Cor., same being the W.Bdr'y.line of Sec.No.6, Theo.Koester, 360  
varas N.25 W.from the S.W.Cor.of said Theo.Koester No.6, at 26100  
varas branch runs E., at 26611.2 varas set post for 14th mile, at  
26800 varas crossed branch runs S., at 26963 varas crossed the S.  
Bdr'y.line of Sec.No.6, Theo.Koester, 398 varas S.65 W.from the S.E.  
Cor.of said Sec.No.6, Theo.Koester, same being 118 varas S.65 W.  
from the N.E.Cor.of Sec.No.5, Theo.Koester, and the N.W.Cor.of the  
M.W.Anthony Pre.Surv., at 27143 varas crossed the W.Bdr'y.line of  
the M.W.Anthony Surv., 47 varas S.25 E. from its N.W.Cor., at 27220  
varas branch runs N.E., at 27240 varas crossed road leading from  
the Anthony old residence to Vincent Smith's residence, at

27360 varas branch runs E., at 27585 varas crossed Mill creek, runs north, at 27980 varas crossed road leading from the Anthony old residence to Mill creek Church, at 28100 varas branch runs W., at 28125 varas crossed the E.Bdr'y. line of the M.W. Anthony Surv., 442 varas S.25 E. from its N.E. Cor., same being the W.Bdr'y. line of Sec. No. 18, Theo. Koester, at 28258 varas ~~xxx~~ crossed road leading from Mill Creek Church to Delma, at 28434 varas branch runs W., at 28512.0 varas set post for 15th mile, at 28592 varas crossed the E.Bdr'y. line of Sec. No. 18, Theo. Koester, 600 varas S.25 E. from its N.E. Cor., at 28828 varas branch runs S.W., at 29437 varas crossed road leading from the residence of Will Tilley to Delma, at 29732 varas crossed the S.Bdr'y. line of Sec. No. 15, Theo. Koester, 175 varas S.65 W. from its S.E. Cor., at 29962 varas crossed the E.Bdr'y. line of Sec. No. 16, Theo. Koester, 75 varas S.25 E. from its N.E. Cor., at 30236 varas branch runs S.W., at 30412.8 varas set post for 16th mile, at 30932 varas branch runs E., at 31062 varas crossed the S. Bdr'y. line of Sec. No. 13, Theo. Koester, 319 varas S.65 W. from its S. E. Cor., at 31587 varas crossed the E.Bdr'y. line of Sec. No. 14, Theo. Koester, 175 varas S.25 E. from its N.E. Cor., at 31738 varas branch runs S., at 32012 varas branch runs S., at 32213.6 varas set post for 17th mile, at 32403 varas branch runs S., at 32576 varas road leading from the Stroud old place to the Delma road leading to the residence of Will Tilley, at 32947 varas crossed east Bdr'y. line of Sec. No. 9, ~~455xxx~~ Theo. Koester, 453 varas S.25 E. from its N.E. Cor., at 33302 varas branch runs N.E., at 33412 varas branch runs S.E., at 33723 varas crossed Fairdale & Delma road, at 33763 varas crossed the W.Bdr'y. line of the Rush Rurroughs Surv., 375 varas N.25 W. from its S.W. Cor., at 34114.4 varas set post for 18th, mile, at 34121 varas branch runs S.E., at 34522 varas branch runs N., at 35009 varas head of Dainwood Spring branch, runs N.E., at 35094 varas Bevils Old Ferry on the Sabine River, set post for S.E. Cor. of Sabine county, marked post on N. side " SABINE COUNTY" marked post on S. side " NEWTON COUNTY", marked a sycamore 6 inches in Dia. " X.N.C. " Brs. S.40 E. 4/5 of a vara, a Sycamore 8 inches in Dia. Mkd. " X.S.C. " Brs. N.83 W. 3-2/5 varas.

At 34664 varas on the above described line passed the S.E. Cor. of the said Rush Burroughs Surv., same being the N. Bdr'y. line of the William Robinson survey, 240 varas S. 65 W. from the N.E. Cor. of said Robinson survey on the Sabine river. Said S.E. Cor. of said Burroughs Surv. being the same as the S.W. Cor. of the survey of 87 acres in the name of W.J. Bloodsworth, or G.E. Pratt. The W. Bdr'y. line of said Burroughs survey being the same as the E. Bdr'y. line of the T.W. Ford survey. The post set at the N.E. Cor. of Jasper county was marked on the N. side " SABINE COUNTY ", on the S.W. side " JASPER COUNTY ", on the S.E. side " NEWTON COUNTY ", on the S. side " MAY 1912 ". All the mile post along the line were set in the earth as the law provides and them together with the corner posts had mounds of earth raised about them. All the post set are of pine with the exception of the 5th mile which is mulberry, and the 8th mile is of sassafras. It would not have been practical to have secured cedar or Bo Is de Arc posts and cypress would not have been suitable as it will not last when placed in the ground. All the posts except the two mentioned above were of the best grade pine heart and rich lightwood. All mile posts were marked " SABINE COUNTY " on the N. side and " NEWTON COUNTY " on the S. side, each post was marked on the west side to show the number of miles from the N.W. Cor. of Newton county, " 1 MILE " to " 18 MILES " respectively. All the posts set were of from 8 inches to 10 inches in Dia.

Surveyed from the 20th day of May A.D. 1912 to the 5th, day of June A.D. 1912. Magnetic variation 7 degrees and <sup>35</sup>/<sub>1</sub> minutes East, at N.W. Cor. of Newton County.

J. L. RAGAN |  
N. J. MASON | CHAIN CARRIERS.

I, James G. Barker, a practical surveyor appointed by the Hon. Commissioners Court of Sabine county, Texas, on the 8th, day of April A.D. 1912, for the purpose of establishing the above boundary line, and directed to begin said work on the 20th, day of May A.D. 1912, beginning at the N.E. Cor. of Jasper county, at the McKim old place, and the Hon. Commissioners Court of Newton xxx county, Texas, having been duly notified of such order as mentioned

above, having failed to send a representative to assist me in said work, do hereby certify that the foregoing described survey was actually made by me on the ground, according to law, on the dates and with the chain carriers aforesaid, duly qualified, and that all the corners, lines, boundaries and marks of the same, whether natural or artificial, are truly and correctly described and set forth in the foregoing field-notes, and the accompanying plat.

JGB-B.

James G. Barker  
Surveyor.

The State of Texas }  
County of Sabine } J. W. R. Hyden, clerk of the  
County Court of Sabine County Texas, do hereby  
certify that the above and foregoing is  
a true and correct copy of the Field  
notes of the boundary line between  
Sabine and Newton Counties as fully  
as the same appears of record in  
the Minutes of the Commissioners  
Court of Sabine Co. Tex. in Vol L  
pages 75 et seq.

Given under my hand and seal  
of office this the 1st day of July  
1912  
W. R. Hyden Co. Clk  
Sabine Co. Tex

NOTES OF BOUNDARY LINE  
BETWEEN SABINE & NEWTON COUN-  
TIES.

#####

FOR COM. GEN'L. LAND OFFICE.

#####

*Sabine Co Bdry Line*

FILED

JUN 17 1912

*H. R. Alden*  
Surveyor, Sabine County, Texas

*Boundary line betw.  
Sabine and Newton Co.*

Field Notes 1912

FILED

JUL 5 1912

J. T. ROBISON, Commissioner

*S. C. Clark* Clerk

number 58537

*Abstract corrected  
in Vol. 35.*



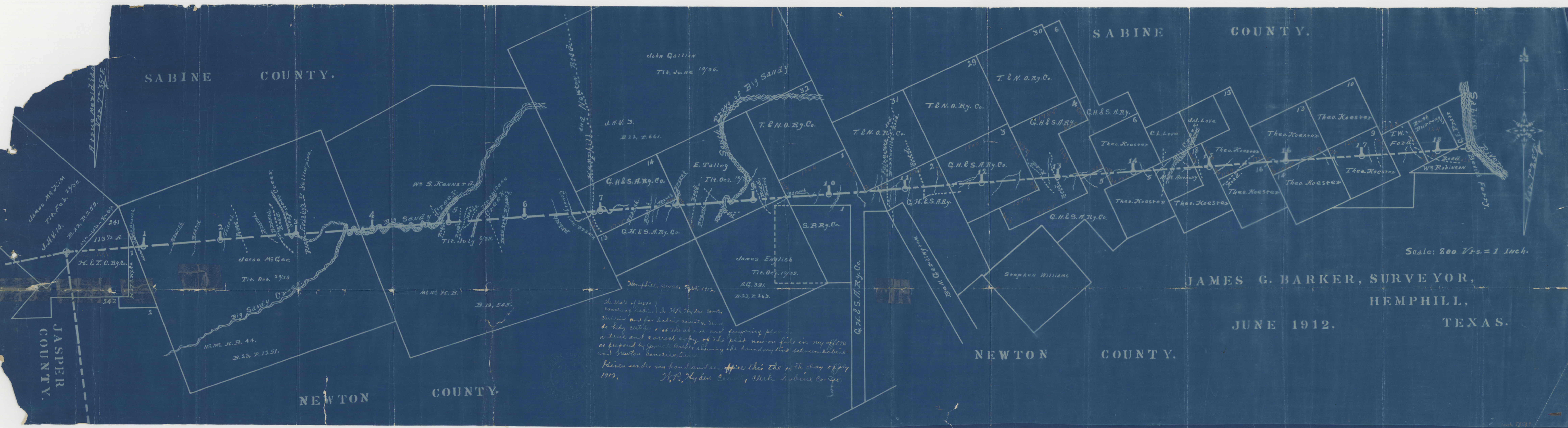
SABINE COUNTY.

SABINE COUNTY.

JASPER COUNTY.

NEWTON COUNTY.

NEWTON COUNTY.



The State of Texas  
County of Sabine }  
County of Jasper }  
do hereby certify that the above and foregoing plan is  
a true and correct copy of the plat now on file in my office  
as prepared by James G. Barker showing the boundary line between Sabine  
and Newton Counties, Texas.

Given under my hand and seal of office this 15th day of July  
1912.  
J.R. Hayden Clerk Sabine Co. Tex.

Scale: 800 Fts. = 1 Inch.

JAMES G. BARKER, SURVEYOR,  
HEMPHILL,  
TEXAS.  
JUNE 1912.



attach this to the bill notes sent  
you some time ago.

For Hon. John P. Terrell,  
Commissioner Gen'l. Land Office,  
Austin, Texas. **H**