

291 141

The State of Texas } Plat and Field Notes of a
 County of Shackelford } Survey of the West line of
 Stephens and East line of Shackelford County Texas
 Made by virtue of an order issued out of
 the Commissioners Court of Stephens County
 Texas on the 7th day of July A.D. 1889 and also
 of an order issued out of the County Court
 of said County on the 9th day of July A.D. 1889.
 Beginning at the North West Corner of Stephens
 County, a Rock set in ground, marked on E
 side "N W Cor S Co" and on the west side "N E
 Cor S^d Co" from which mes 8" to S 72 $\frac{1}{2}$ E 25.2
 vs S fork double Elm 14" N 22 $\frac{1}{4}$ E 29.1 vs E fork
 double mes, 12" S 82 $\frac{3}{4}$ E 46.2 vs, variation taken
 at this point by azimuth 9 $^{\circ}$ 59' E. Thence South
 at 157.210, and 274 vs Cross Gibbons Creek
 Course S E 470 vs Branch Co. E 1545.8 vs Branch
 Co. E. 1900.8 vs Set 1st M.S. mes 7" N 54-25 N 38.9 vs
 mes 12" N 25 $\frac{3}{4}$ E 32.6 vs, Thence South 585.6 vs
 South line of Nancy Williams Survey 4387.7 vs
 E of its S W Cor 1374 vs old Belknap and Griffin
 Road 1900.8 vs Set 2nd M.S. P.O. 16" N 81 W 19.4 vs
 P.O. 8" N 41 $\frac{1}{2}$ E 10.1 vs, Thence South (Var 9 $^{\circ}$ 44' E)
 1429.9 vs top left bank Clear fork 1469.4 vs
 waters edge 1526.8 vs top right bank 1900.8
 vs Set 3rd M.S. Bean 7" N 51-30 E 27.1 vs Forked
 Elm 2 ft S 35-30 E 44.4 vs, Thence South 60 vs
 waters edge right bank 113 vs top left bank
 said Stream 1105 vs waters edge left bank
 1135 vs top right bank Clear Fork 1710 vs
 top prairie Hill 1900.8 vs Set 4th M.S. P.O.
 10" N 39 E 76.6 vs P.O. 30" S 54-12 N 84.6 vs

Thence South 1207.5 vs S line Sur 113 J.E. & L Co
 267 west of its S.E. Cor. 1813.4 vs pass 22.2 vs
 N of S.W. Cor. Sur 114. at 1900.8 vs Set 5th M.S. L.O.
 10" N 38 1/4 W 21.8 vs L.O. 7" N 33 1/4 E 27.2 vs.

Thence South 72 vs Branch Co. E 799 vs Branch
 Co N.E. 1058 vs Branch 1184 vs N line Sec 8 Bk 6
 S.P.R.R. Co. 741.2 vs N of its N.E. Cor. 1900.8 vs Set
 6th M.S. Triple L.O. 36" S 7-43 N 105.6 vs mes 12" N
 36-8'E 126.3 vs Thence South 457 vs and 514 vs
 Branch Co. N.W. & N.E. 1023 vs Branch Co. N.W. 1184 vs
 S line Sec 8 & N line Sec 7 Bk 6 S.P.R.R. Co. 1159.6
 vs E of S.W. Cor. of first and 375.6 vs E of N.W. Cor
 Sec and 1545.5 vs Branch Co. N.E. 1900.8 vs. Set 7th
 M.S. on N Slope Flat Top Mt. mes. 8" S 52 1/4 W 25.4
 vs P.O. 10" S 57-45 E 25.5 vs. Thence South 67 vs

top said Mt. 28.2 vs N from "USGS+" 84.4 vs
 Set round Stone on Crystal Falls and Albany
 Road 1629 vs S line of J.A. Fandy Survey
 62.6 vs E of S.W. Cor. and N line J.E. Meekamp's Sur
 236.6 vs E of N.E. line Sur 809 J.E. & L Co. 1865.6 vs
 N.E. line Sur No 809 J.E. & L Co. 994.7 vs S 45 E from
 its N Cor. 1900.8 vs Set 8th M.S. P 12" S 6-12 E

111.4 vs mes. 12" N 72 W. 57.3 vs. Thence South
 870 vs Negro Creek Co. S E 907 vs Same Cr Co N.W.
 948 vs Same Cr. Co S.E. 1900.8 vs Set 9th M.S.
 L.O. 16" N 5.37 W 29.4 vs P.O. 18" N 29-48 E 22.2 vs
 Thence South 1280 vs and took variation 9.16
 E - by Azimuth 1900.8 vs Set 10th M.S. P.O. 22"
 N 27-10 W 16.6 vs P.O. 20" S 83-23 W 32.6 vs.

Thence South 224.5 vs N. McDowell Crk 757.8
 vs N line Sec No 1 Bk 2 J & N.O. R.R. Co 1609.7 vs N
 of its N.E. Cor 1900.8 vs Set 11th M.S. mes 14" N 11 E

77.9 vs mes 8" N 88.52 W 64.1 vs.

Thence South 425.1 vs (var. 9-1 E) N line Sur 1528
J.E. & L. Co. 265.7 vs W of N.E. Car 459 vs Branch Co. E
598 vs McDowell Cr. Co E 684 vs top Knoll 1766.3
vs N line Sur 1527 J.E. & L. Co. 265.7 vs W of N
E Car. 1900.8 vs Set 12th M.S. P.O. 10" S 1-30 E 14.3
vs mes 9" N 53 1/2 W 16 vs. Thence South (var 8.58 E)
994 vs Branch Co S.E. 1206.7 vs N line Sur 1533
J.E. & L. Co. 265.5 vs W of its N.E. Car 1360 vs Branch
1900.8 vs Set 13th M.S. mes 4" S 75 1/4 E 8.6 vs mes.
6" N 70-45 W 10.6 vs. Thence South 300 vs Branch
Co. N 580 Branch 647 vs N line Sur 1542 J.E. & L.
Co. 265.5 vs W of its N.E. Car. 713 vs Meyer's Branch
Co E 780 vs Road Stone on New B & A. Road
848 vs Hubbards Creek Co. N.E. 1475 vs Bul
dry Branch Co N 1593 vs Dry Br. Co N 1663 vs
Dry Br. Co E 1761 vs Dry Br. Co. N. 1900.8 vs Set 14th
M.S. mes 10" S 43-42 W 20.7 vs mes 15" S 45-50 E 29.
7 vs. Thence South 79.2 vs N line Sur 1546
J.E. & L. Co. 272.8 vs W. of its N.E. Car. 160 vs
Branch Co. S W 297 vs Branch Co. N W 810 vs
top of hill 1420 vs S line Sur 1546 & N line
Sur No 9 B & R Ry Co. 272.8 vs W of S.E.
Car Sur 1546. at 1900.8 vs Set 15th M.S. L.O. 20"
S 4.40 W 25.4 vs Forked L.O. 16" N 16 E 39.8 vs
Thence South 138.5 vs N line Sur 24. Old 8 J & P Ry
Co. 531.4 vs W of N.E. Car. 372 vs Branch. Co. N 1054 vs
Muds Branch Co. N.W. 1900.8 vs Set 16th M.S. double
P.O. 20" N 75.5 W 83.1 vs mes 12" N 63-30 E 28.1 vs
Thence South 126.5 vs N line Sur 27 Set 8 J & P Ry
Co. 550.4 vs W of N.E. Car. 1803 vs Branch Co. N 1900.8
vs Set 17th M.S. P.O. 30" N 51 1/4 E 48.8 vs L.O. 13" N 31

W 30.3 vs. Thence South 31 vs old Road 121 vs
 N line Sur 54 Blind Asylum 567 vs W of NE Cor 474
 vs Branch Co N.W. 1340 vs old B & Albany Road
 1900.8 Set 18th M.S. Mus 6" S 81.57 E 31.9 vs Mus 6" 838.
 10 W. 51 vs. Thence South 367 vs N line Sur 55 Blind
 Asylum 579.4 vs W of N.E. Cor. 988 vs Branch Course
 West 1011 vs Branch Co. E 1126 vs Branch Co West
 1700 vs took variation by azimuth (var 9° 23' E) 1900.8
 vs Set 19th M.S. Mus 15" S 56.20 E 24.11 vs do 6" S
 45.37 W. 74 vs. Thence South 362 vs N line Sur
 56 B.A. 589 vs W of N.E. Cor. 989 vs Branch Co W 1900.8
 vs Set 20th M.S. Mus 6" S 74.35 E 45 vs Mus 8" 487
 E 86 vs. Thence South 351.5 vs N line Sur 57 B.A.
 565.4 vs W of N.E. Cor. 577.5 vs Branch 1900.8 vs
 Set 21st M.S. Mus 14" N 45. W. 10 vs Mus 13" S 57.55 E 42
 vs. Thence South 340 vs deep rocky Branch 349.
 4 vs N line Sur 7 Orphans Asylum 602.7 vs W
 of N.E. Cor 940 vs Road 1900.8 vs 22nd M.S. Mus
 13" N 3 3/4 W 21.2 vs Mus 10" S 26 E 6.1 vs.
 Thence South 350 vs N line Sur No 13 O.A. 607 vs
 W of N.E. Cor. 1900.8 vs Set 23rd M.S. P.O. 10" N 23.25
 W. 11 vs Mus 6" S 54.45 E 1.9 vs. Thence South 308.8
 vs N line Sur 26. O.A. 624 vs W of N.E. Cor. Cross-
 ing Branch 1900.8 vs Set 24th M.S. Mus 9" S 79 3/4
 E 46.3 vs P.O. 14" S 89 1/2 W 50.6 vs. Thence South 585
 vs Cross Branch Co. S W 710 vs Branch Co. S E
 1201 vs Brickmridge & Belle Plain Road 1209.6 vs
 N line Sur 50 O.A. 629.8 vs W of N.E. Cor. 1834 vs
 Branch Co. E 1900.8 vs Set 25th M.S. in field P.O. 16"
 S 33 1/2 E 41.8 vs P.O. 18" N 42 1/4 E 70.6 vs
 Thence South 346. to 424 vs Battle Creek Co. E 1195 vs
 S. line Sur 50 O.A. & N line Sur 37 Set 7 J + P Ry Co

631.6 vrs W of S.E. Cor. of First and 538 vrs W of N.E.
 Cor. Second 1900. 8 vrs Set 26th U.S. P.O. 13" S 71 N 2 1/2 vrs
 do 13" N 51 E 6 vrs. Thence South 597 vrs Rocky Hallam
 1900. 8 vrs Set 27th U.S. L.O. 8" S 25. E. 22. 8 vrs L.O. 5"
 S 24. N 34.9 vrs. Thence South (Var 9. 33 E) 37 vrs
 Branch of 70 vrs Branch Co. N West 820 vrs W
 Paint Mt. 1122 vrs Branch 1875 vrs N line Sur
 38 Set 7 2^d P Ry Co 140 vrs E of N N Cor 1900. 8 vrs Set
 28th U.S. Mes 5" S 44 N 10. 8 vrs Mes 4" S 74° 8 E 10. 1 vrs
 Thence South 1119 vrs Creek Course West 1900. 8 vrs Set
 29th U.S. about 200 vrs S.W. from Jas Halls house
 P.O. 15" S 53. 19. E. 63. 3 vrs Mes. 5" S 42. 45 N 30 vrs,
 Thence South 356 1/2 vrs S line Sur 38 Set 7 2^d P Ry Co
 and North line Jas Halls Sur 563 vrs S 83. 40 N
 of S.E. Cor Said Sur 38 at 371. 5 vrs S line Said Hatt
 Sur and N line of N R Brister Sur 136 vrs E of N N
 Cor Said Brister Sur 1147 vrs S line Said Brister
 Sur & N line Sur 464 S.P.R.R. Co. 136 vrs E of their Com-
 mon West Corner 2282. vrs to S W Cor Stephens
 and S.E. Cor of Shackelford County Set Stone in
 ground marked on E side "S.W. Cor S.C. JULY 31. 1889"
 and on W side "S.E. Cor S.C." Forked L.O. 20" N 67 1/2
 N 110.6 vrs L.O. 10" N 59. 41 N 152.6 vrs L.O. 13" N 44. 43
 N 125. 8 vrs L.O. 18" S 51. 57. N 136. 6 vrs L.O. 8" S 88. 31 E
 127. 5 vrs Bearings marked X Mile Stones marked
 on E side "N 1. S.C. M" and the number of the
 mile and on the West side "E L. S.C. M" and the
 number of the mile Variation at this Cor. 9° 36'
 E. Survey Completed July 31st AD 1889.
 Otho Brown } Chain Carriers to 18th miles 1700 vrs
 W.A. Craighead }
 Walter Maxwell and Otho Brown CC to 20 miles 800 vrs

Otho Brown }
J. F. Cole } Chain Carriers Completing work

We W. A. Eakheart Special Surveyor of Shackelford County Texas, and J. W. Brown Special Surveyor of Stephens County Texas, do hereby Certify that the foregoing Survey was made by us on the ground according to law completed on the date and with the Chain Carriers duly qualified as above set forth, and that the initial Corners mile Stones, Survey Connections together with marks both Natural and Artificial are truly described and set forth in the foregoing Plat and Field Notes,

This August 7th AD 1889.

W. A. Eakheart

Surveyor for Shackelford Co

J. W. Brown

Surveyor Stephens Co, Texas

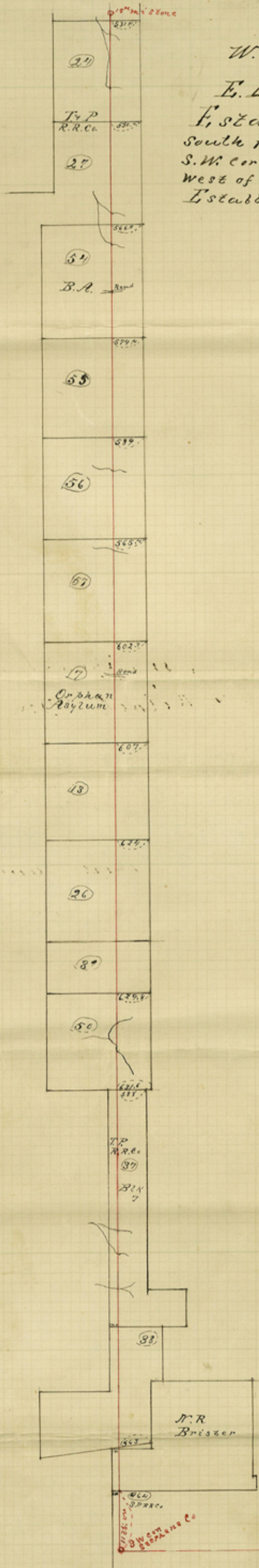
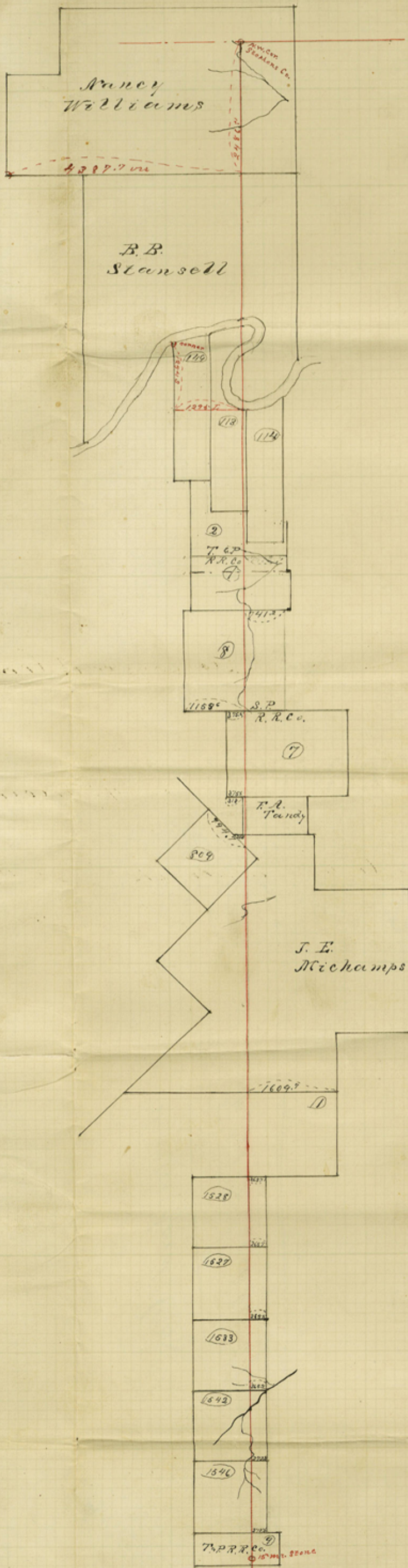
State of Texas }
County of Shackelford } I J. C. Dodson County Clerk
in and for said County & State do hereby
Certify that the above and foregoing is a true and
Correct Copy of the Original Field Notes of the East
line of Shackelford County Texas, and the West
line of Stephens County Texas, as made and Certified
to by W. A. Eakheart Special Surveyor for
Shackelford County Texas, and J. W. Brown
Special Surveyor for Stephens County Texas
Now on file in my office

Given under my hand and seal of office
this 3rd day of December AD 1889.

J. C. Dodson Clerk
County Court Shackelford Co
Texas

Plan of

W. Line of Stephens Co
and
E. Line of Shackelford Co
Established by running due
South from a point due west of the
S.W. cor of Young Co. to a point due
west of the S.W. cor of Palo Pinto Co
Established by Stephens Co



Shackelford Co. Bary Line 1

Shackelford Co

^{Eastline}
Filed December 5/89

See Stephen Co. Westline

L. P. 40c

cont 58632