

Shackelford Co. Entry Line 2

Shackelford Co
Boundaries

Filed Dec. 15th 1889

suspended. - no connection
made with Jones Co's E. by
which has been adopted
also Jones Co was not re-
sented. - Beaumont -

See Jones Co bds. for accept-
-ance of W bdy of this Co.

abstract corrected

Beaumont

Shackelford Co Bdry Line 2

Shackelford County
North and West Line

Filed Dec. 5/89

Field notes do not agree with
Jones Co. 42 and Taylor N.C. 1000
C. W. Powell

See 490c

Shackelford

5 PAGES AND
1 PLAT

Plat & Field notes of a survey of
 the N & West line of Shackelford
 County, surveyed in accordance with
 an order issued out of the Commissioners
 Court of said County May 15th 1889
 Beginning at the N.W. corner of Stephens
 County on the Nancy Williams Survey
 One mile 586⁶ varas North and 7387⁷ varas
 from the S.W. corner of said Survey a Stone
 set in ground marked on the S. side N.E. C.O.R.
 S.d. C.O. and N.W. C.O.R. S. C. from which a
 double prong Elm 14' bears N. 22° 15' E. 29
 varas a Post 8' bears S 73° 30' E. 25² varas
 Thence west at 148⁵ varas Creek 1243 varas
 set Stone marked S. L. T. C. IX. M.
 1900⁸ varas set 1st Mile Stone marked N. L.
 S. C. I. M. Thence West at 1243 varas
 set Stone marked S. L. T. C. X. M.
 at 1565 varas cross East line of the
 Wm. Bramlett Survey No 3, 971⁶ varas
 South from its N.E. corner 1900⁸ varas
 set 2nd Mile Stone marked N. L. S. C. II. M.
 from which a Post bears S 23° 01' E. 11⁵
 varas - Thence west at 1243 varas set
 Stone marked S. L. T. C. XI. M. 1900⁸ varas
 set 3rd Mile Stone marked N. L. S. C. III. M.
 from which a Post 12' bears S 7° 46'
 W. 38 varas
 Thence west at 389¹ varas the East line
 of Wm. Bramlett Survey No 4, 976² varas
 S of its N.E. corner 580 varas Branch 79⁸
 or Shisley Branch at 1200 varas Branch

at 1243 was set Stone Mkd. S. L. T. C. XII. M.
from which a line 6' bears N 56° 30' E. 9 rods
to 4' bears S 15° 26' W. 7' rods at 1365 rods
a Branch 1875 was branch 1900 rods set
4th Mile Stone Mkd. N. L. S. C. IV. M

Thence west at 826 rods the west line of
said survey No. 4 975 rods south of its
N. W. corner at 1243 rods set Stone Mkd.

S. L. T. C. XIII. M. from which a line 12'
bears S 75° E 19 rods at 1664 rods cross
the E line of the W. S. Riddle Survey 415

or S. of its N. E. corner (Located from the
N. W. corner of said Riddle Survey) 1900 rods
set 5th Mile Stone Mkd. N. L. S. C. V. M from
which a P. O. 18' bears S. 27° 30' E. 38 rods

Thence west at 1243 rods set Stone Mkd.
S. L. T. C. XIV. M. from which a line 10' bears
N. 31° 42' W. 5 rods 1900 rods set 6th Mile
Stone Mkd. N. L. S. C. VI. M

Thence west at 1093 rods cross the N. E.
line of J. C. & L. Co. Survey No 656. 55 rods
N 45° W. from its most eastern corner

1243 rods set Stone Mkd. S. L. T. C. XV. M
1900 rods set 7th Mile Stone Mkd. N. L. S.

C. VII. M. - Thence west at 637 rods set Stone
on Albany & Throckmorton Co. Road Mkd. C. L. I. N. E.

at 1243 rods set Stone Mkd. S. L. T. C. XVI. M. from
which a line 4' bears S. 26° 44' W. 5 rods

at 1360 rods branch 1880 Knox branch 1420
rods same branch 1460 rods same branch

1490 same branch 1560 rods Cattle Trail
By Survey 1597 rods Davis branch

1900⁸ varas set 8th mile Stone Mkd N.L.S.C.
 VIII. M. - Thence west at 92^o varas top bank
 of Clear Fork of Brazos River. Point from
 which the lower River corner of T.C. & L. Co
 Survey No. 653 bears N. 24³/₄ W 133^o varas and
 S 45^o W. 18^o varas at 1243 varas set Stone
 Mkd. S.L.T.C. XVII. M. at 1313 var set Stone
 on Ft Griffin & Camp Cooper road. Mkd
 C.O. L.N.T. 1900⁸ varas set 9th mile Stone
 Mkd N.L.S.C. IX. M from which W Mus. 3' bears
 S 49^o 38' E. 19^o varas - Thence west at 123^o 8' varas
 cross S.W. line of T.C. & L. Co Survey No 484.
 180 varas S 43^o E of its most western corner 1243
 varas set Stone Mkd. S.L.T.C. XVIII. M. 1263 varas
 branch 1900⁸ varas set 10th mile Stone Mkd.
 N.L.S.C. X. M. - Thence west at 335 varas cross
 west line of the Robertson survey 6^o 2' varas S.
 from its W.W. corner 1243 varas set Stone
 Mkd. S.L.T.C. XIX. M. variation 10^o 2' at 1263
 varas Branch 1900⁸ varas set 11th mile Stone
 Mkd N.L.S.C. XI. M. - Thence west at 1243 varas
 set Stone Mkd S.L.T.C. XX. M. variation 10^o 13'
 1900⁸ varas set 12th mile Stone Mkd. N.L.S.C.
 XII. M. - Thence west at 1243 varas set Stone Mkd.
 S.L.T.C. XXI. M. 1900⁸ varas set 13th mile Stone on
 top of a hill Mkd. N.L.S.C. XIII. M. from which
 W Mus 6' bears No. 39^o 23' W. 79 varas
 Thence West at 906. varas branch 1243 varas
 set Stone Mkd. S.L.T.C. XXII. M. 1343 varas
 Branch 1900⁸ varas set 14th mile Stone Mkd
 N.L.S.C. XIV. M. - Thence west at 1243 varas
 set Stone Mkd S.L.T.C. XXIII. M.

1243 varas branch 1900⁸ varas set 15th mile
 Stone Mkd. N.L.S. C. XV. M. from which a mus
 5' bears N. 35° 32' W. 9.3³ varas, Do 5' bears 66° 2' W.
 57 var. Thence west at 1243 varas set Stone
 Mkd. S.L.T. C. XXIV. M. in head of a stream
 1900⁸ varas set 16th mile Stone Mkd. N.L.S.
 C. XVI. M. from which a mus 5' bears S. 19° 47'
 E. 55.6⁶ varas, Do bears N. 43° 27' E. 48.2² varas
 Thence west at 1243 varas set Stone Mkd.
 S.L.T. C. XXV. M. from which a mus. 4' bears
 S. 33° 45' W. 14.8⁸ varas, Mus 5' bears N. 54° 39'
 E. 87 var., 1900⁸ varas set 17th mile Stone Mkd.
 N.L.S. C. XVII. M. from which a mus. 5' bears S.
 38° 02' E. 13.5⁵ varas - Thence west at 699 varas
 "South Creek" 896.7⁷ varas cross the west line
 of C. T. R. R. Co. Survey No 100 and East line
of 101. 88.2² varas S. of their common North corner
(Not found, but located by running two
miles or 3800 varas North from the S. W. Corner
of Survey No 99 found on the ground)
 1243 varas set Stone Mkd. S.L.T. C. XXVI. M
 1900⁸ varas set 18th mile Stone Mkd. N.L.S. C.
 XVIII. M. from which a double Elm 8' bears
 S. 26° 30' W. 63 var. Do S. 27° 28' W. 68 varas
 Thence west 28.8⁸ varas branch 1020 varas branch
 1243 varas set Stone Mkd. S.L.T. C. XXVII. M
 variation 10° 3' a mus 4' bears N. 66° E 2 var.
 a mus 3' bears S. 7° 30' W. 7.1¹ varas at 1760
 varas branch 1900⁸ varas set 19th mile
 Stone Mkd. N.L.S. C. XIX. M. Thence west
 variation 9° 55' at 610 varas cross deep
 ravine 1058 dry branch 1243 var set Stone

Mkd S. L. T. C. XXVIII. N. from which a mes
 bears S. 51° 8' W. 11.5 varas Do S. 70° 30' U
 23.8 varas 1900^o varas set 20th mile Stone
 Mkd N. L. S. C. XX. M. - Thence west at 1243
 varas set Stone Mkd S. L. T. C. XXIX. N. from
 which a mes 6' bears S. 25° 30' W. 12.2 varas
 1900^o varas set 21st mile Stone Mkd N. L. S. C.
 XXI. N. from which a mes 12' bears S. 15° W
 30 varas - Thence west at 154 varas Clear
 fork of Brazos River at waters edge 31⁵
 varas wide course N. W. at 1243 varas set
 Stone Mkd S. W. T. Co. Sept 4th 1889
 from which a mes 4' bears N. 37° 15' E. 26.7
 varas Do 3' N. 8° 58' W. 10.8 varas. Do. 3' S. 67°
 28' W. 23 varas: 15 varas north of the McKenzie
 Trail. Bearings to this Stone Mkd X
 at 1720 varas pass 777.7⁷ varas north of the
 N. E. corner of the Sarah Blythe Survey
 1900^o varas set 22^d mile Stone Mkd N. L. S.
 C. XXII. N. from which a mes. 4' bears N. 42° 5'
 E. 14 varas - Thence west at 75 varas drain
 553 varas drain 898 varas branch at 1729
 varas pass 73. varas south of the S. E. corner
 of the Antonio Rodriguez Survey 1900^o varas
 set 23^d mile Stone at crossing of the McKenzie
 Trail. from which a mes 4' bears S. 65° 23'
 E. 7.5 varas - Thence west at 188 varas branch
 348 same branch 1900^o varas set 24th mile
 Stone Mkd N. L. S. C. XXIV. N. from which a
 mes 4' bears S. 9° 43' W. 52 varas
 Thence West 1900.8 varas set 25th mile Stone
 Mkd N. L. S. C. XXV. N. from which a mes

22

23

24

25

5' bears S. 1° 30' W. 58 varas - Thence N. at
164.6 varas pass 95.3 varas South of the S. W.
corner of Antonio Rodriguez Survey at 1522.6

26

varas 791.3 varas South of N. W. Corner of A.
B. & M. Survey No. 1, 1900.8 varas set 26th mile
Stone Mkd. N. L. S. C. XXVI. N. from which a
true S' bears S. 8° 51' W. 28' varas. A true S'
bears N. 75° 56' W. 26.8 varas - Thence west
at 1384.3 varas pass 791.3 varas South of
the N. W. Corner of A. & J. C. R. R. Co Survey

27

No. 2, 1900.8 varas set 27th mile Stone
Mkd. N. L. S. C. XXVII. N. - Thence west (variation
9° 48') at 648 varas Road Stone on Hasbelle
road. Mkd. Co Line 1246 varas cross west
line of No. 11 & E. line No. 10. A & J. C. R. R. Co. Survey
791.3 varas South of their common North

28

corner (Not found) 1900.8 varas set 28th mile
Stone Mkd. N. L. S. C. XXVIII. N. from
which a true bears N. 47° 13' E. 22.2 varas true
6' bears N. 70° 15' W. 26.8 varas

Thence west at 1107.2 varas the west line of
No. 10 & E. line No. 9. A. & J. C. R. R. Co Survey
791.3 varas South of their common N. corner

29

974 varas branch 1900.8 varas set 29th mile
Stone Mkd. N. L. S. C. XXIX. N.

Thence west at 969.4 varas the west line
of Land No. 9, and the E. line of Sect.
No. 8. A. & J. C. R. R. Co Survey. 791.3 varas
South of their common N. corner

30

(Not found) at 1795 varas branch
1900.8 varas set Stone for the N. W.
corner of Shackelford County

Marked N.W. C.O.R. S. Co. Sept 20th 1889
 from which a mes 12' bears S. 11° 40' E
 12.² varas a mes 8' bears S. 23° 18' W. 26.⁸
 varas a mes 10' bears N. 60° 10' W. 36 varas
 a Branch bears west 24 varas

Thence South (variation 9° 45' at 1258
 varas cross South line of H & T. C. R. R.
 Co Survey No 8 and W. line of 16. 969.⁴ varas
 west of their common S. corner (not found)
 1900.⁸ varas set 1st mile Stone Mkd. W.L.
 S. C. I. M. a mes bears N. 35° 32' W. 27.⁷
 varas do bears N. 20° 46' E 30.⁸ varas

Thence South at 1406 varas cross South
 line of H & T. C. R. R. Co Survey No 16. 793 varas
 west of its S. E. corner (not found but located
 by running due East from the S. W. corner
 of H & T. C. R. R. Co Survey No 17) at 13-13-
 pass. 62.⁶ varas west from the N. W. corner
 of B. B. B & C R. R. Survey No 157. (Corner
 found. also the N. W. corner of said No 157)

1900.⁸ varas set 2nd mile Stone Mkd. W.L. S.
 C. II. M. - Thence South 1692 varas pass
 60.⁹ varas west of the S. E. corner of said
 No 157 (found.) 1900.⁸ varas 3rd mile Stone
 Mkd. W.L. S. C. III. M. - Thence South at 1841.²
 varas the S. line of 164.63.⁶ varas west of
 its S. E. corner (not found) 1900.⁸ varas

set 4th mile Stone Mkd. W.L. S. C. IV. M.
 Thence South 1841.² varas S. line of 167
 and W. line of 170. 543 varas East of
 their common west corner. 1900.⁸ varas
 set 5th mile Stone Mkd. W.L. S. C. V. M.

WEST LINE
5 PAGES

11
18
Thence South at 1841² varas S. line of
No 171 & N line of 175 B B B & C R R Co
surveys 543 varas E from their common
west corner (not found) 1900⁸ varas set
6th mile Stone Mkd. W. L. S. C. VI. M.

Thence S at 1841² varas S line of said
No 175 and N line of 177. B B B & C R R
Co surveys 543 varas E from their com-
mon west corner (not found) 1900⁸ varas
set 7th mile Stone Mkd. W. L. S. C. VII. M.

Thence South at 1841² varas cross S line
of said survey No 177 & N line of No. 28.

A B & B. R. R. Co surveys 543 varas East
from their common west corner (not found)
1900⁸ varas set 8th mile Stone Mkd. W. L.

S. C. VIII. M. - Thence South at 1868 varas
pass 47⁷ varas west of the N. E. corner of A
B & B. R. R. Co survey No 26. (found)

1900⁸ varas set 9th mile Stone. Stone in
a drain Mkd. W. L. S. C. IX. M. - Thence South
at 1568.7 varas cross South line of said
No 16. 29¹/₂ varas west of its S. E. corner (found)

at 1865⁷ varas the S line of the W. J. Trapp
160 acre survey 541² varas west of its S. E.
corner. 1900⁸ varas set 10th mile Stone
Mkd. W. L. S. C. X. M. - Thence South at 100

varas cross N line of said Luders survey 1446
varas East of its N. W. corner 1900⁸ varas
set 11th mile Stone Mkd. W. L. S. C. XI. M.

Thence South 771 varas the S line of the
said Luders survey 1446 varas East of
its S. W. corner at 1801 varas South

line of the Doc Smith Survey 494 varas
 East of its S. W. corner. 1900.⁸ varas set
 12th Mile Stone Md. W. L. S. C. XII. M. (variation
 9° 55') Thence S. at 1811 varas the S. line
 of E. T. R. R. Co Survey No 213. 1004' varas
 west of its S. E. corner. (not found but located
 from the S. W. corner of E. T. R. R. Co Survey
 No. 99. found as shown on sketch of north
 line. 1900.⁸ varas 13th Mile Stone Md.
 W. L. S. C. XIII. M. - Thence S. at 1688 varas
 chimney Creek 1811 varas South line of E.
 T. R. R. Co Survey No 214. 1004' varas west
 of its S. E. corner. (not found) 1900.⁸ varas
 set 14th Mile Stone Md. W. L. S. C. XIV. M
 Thence S. at 1811 varas South line of Survey
 No 213-1004' varas west of its S. E. corner
 1900.⁸ varas set 15th Mile Stone Md. W. L. S. C.
 XV. M. Thence S. at 242 varas Road Stone
 on Albany & Jones Co. Road Md. C. O.
 L. I. N. E. 263 var North line of the W. H.
 Watson Survey 59 var East of its N. W.
 corner 1900.⁸ varas set 16th Mile Stone Md.
 W. L. S. C. XVI. M. Thence S. at 237.⁶ varas
 cross S. line of said Watson Survey 59.⁷
 varas N. 84° E. from its S. W. corner at 1207
 varas Branch 1900.⁸ varas set 17th Mile
 Stone Md. W. L. S. C. XVII. M. Thence South
 at 242 varas cross S. line of E. T. R. R. Co
 Survey No 2 & N. line of No 5 - B. L. B. No 14
 510 var N 84° East from their common
 west corner 1900.⁸ varas set 18th Mile
 Stone Md. W. L. S. C. XVIII. M.

LEGHORN ABSTRACT
 FROM GEO. D. BARNARD & CO.
 ST. LOUIS.

Thence S at 44 varas right bank of Dead
Man Creek 84 varas left bank at 1555
varas left bank same creek 1596⁵ varas
right bank 1900⁸ varas Set 19th mile
Stone Tkd W.L.S.C. XIX. M.

Thence South at 212 varas Road Stone on
Rising Sun road Tkd C.O. L.N.E. 222⁸
varas the S. line Sect 8 & N. line Sect. 16
113 varas W 84 E from their common
west corner at 64⁸ varas long Creek
1900⁸ varas 20th mile Stone Tkd W.L.S.C.

XX. M. - Thence S at 227 varas cross
S line of No 14 & N. line of No 19. 16 varas
S 84 W. from their common E corner 1900⁸
varas Set 21st mile Stone Tkd W.L.S.C. XXI

M. - Thence South at 209.5 varas South
line of Sect 19. & N line of 24. 198⁶ varas
from their common E. Corner at 1295 varas
Spring Creek 1900⁸ varas Set 22^d mile
Stone.

Thence South at 202 varas the S
line of No 24 & N line of No 29. 377 varas
from their common E. corner. 1900⁸
varas Set 23^d mile Stone Tkd W.L.S.C.

XXIII. M. - Thence S at 197² varas S line
of No 29 & N line of No 36. 560 varas from
their common East corner 1900⁸ varas
Set 24th mile Stone Tkd W.L.S.C. XXIV. M.

Thence S at 199 varas cross S line of
No 36 & N line of No. 4. 208 varas N.
84 E. from their common middle or
1/2 mile corner. (variation 10⁺) 1900⁸ varas
Set 25th mile Stone Tkd W.L.S.C.

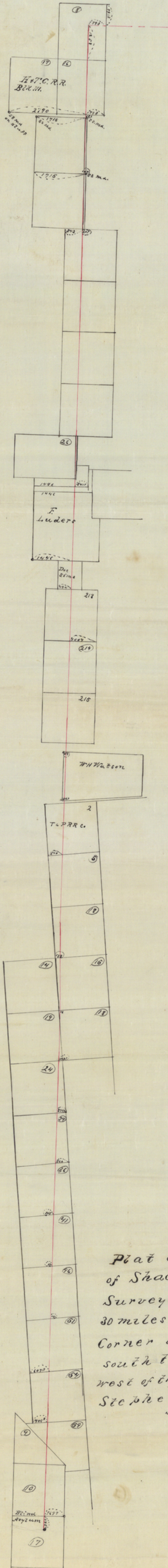
XXV. M. Thence S at 182 varas cross S line of No 41, and W line of No 46, 33.7 varas N. 84 E. from their common middle or 1/2 mile corner (variation 9° 30') 1900.8 varas set 26th mile Stone Mkd W.L.S.C. XXVI. M Thence S at 171.9 varas the S line of No 46 & W line of No 51, 167.7 varas S 84. W. from their middle or 1/2 mile corner 1900.8 varas set 27th mile Stone Thence S (variation 9° 35') at 189 varas cross S line of No 57 & W line of No 54 607.7 varas from their common west corner 1900.8 varas set 28th mile Stone Mkd W L.S.C. XXVIII M. Thence South at 201.6 varas cross S line of Sect No 54 & W line of 59, 406 varas from their common west corner 529 varas Road Stone on Abilene road, 1900.8 varas 29th mile Stone Mkd W.L.S.C. XXIX. M. This bears S 62° 36' E 11.8 varas to 7' bears W 22° 16' N. 20.7 varas. Thence S, at 437 varas branch 1797 varas cross W line of B.A. Survey No 17, 769.7 varas west of its W.E. corner at 2282 varas set Stone for the S.W. corner of Shackelford County due west from the S.W. Corner of Stephens County as established July 31, 1869. A mis 7' bears N 68° 31' E 40.9 varas A mis 7' bears S 11° E 36.6 varas Bearings Mkd X

J. W. W. Cahoon Special Surveyor appointed by the Hon. Commissioners Court

of Shackelford County Texas at their May Term 1889, to survey the N. W. & S. lines of Shackelford County do hereby certify that the foregoing Field notes & Plats hereto attached show correctly the N. & W. lines of said County as run by me on the ground assisted by the duly appointed Surveyor from Throckmorton County, as far as the S. W. corner of said Throckmorton County, survey completed Oct 19th 1889

W. A. Williams	} Chain Carried on N line
Wm Posy	
W. A. Williams	} Chain Carried on S & W line
Wm Posy	
P J Holcombe	

The State of Texas }
 County of Shackelford } J. G. Dodson County
 Clerk in and for Shackelford County State of
 Texas do hereby certify that the above and
 foregoing is a true and correct copy of the
 original Field Notes & Plat of North West
 and South lines of Shackelford County Texas
 as made by W. A. Eakheart Special Surveyor
 appointed by Comrs Court to establish
 said lines. Now on file in my office
 given under my hand and Seal of
 office this 3rd day of Dec 1889
 J. G. Dodson Clerk
 Co Court Shackelford Co Tex

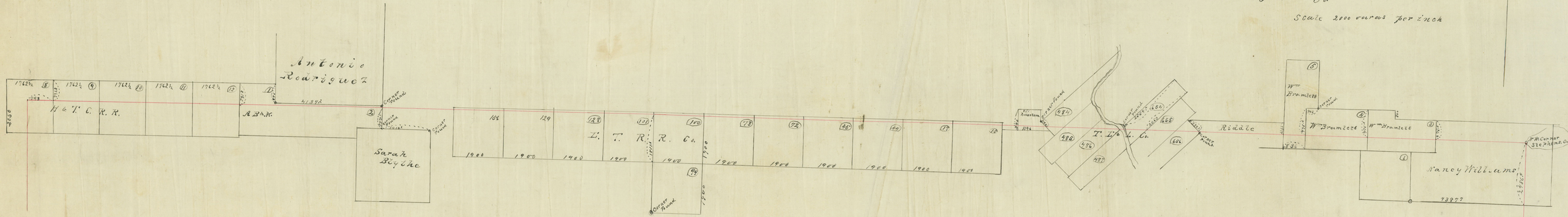


Plat of the West Line
of Shackelford County
Surveyed from a point
30 miles West of the N.W.
Corner of Stephens Co.
south to a point due
west of the S.W. Corner of
Stephens Co.
Scale 2000 yards to an inch

James B. Boyd

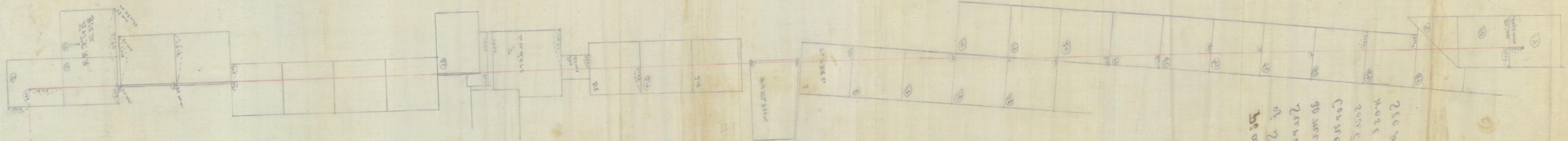
Plat of the North line of
Shackelford Co

Scale 2000 varas per inch



Shackelford Co. Bdry Line 2. Jones Co. Bdry line

(6)



250 paces
more of the
course of
30 paces
of 250 paces
from the
face of the
250 paces
more of the
course of
30 paces
of 250 paces
from the
face of the