

Sherman Co Bdry 9 Line 4

Field Notes

Moore-Sherman  
County Boundary.  
by H. B. Spiller  
July 1910.  
G.L.O. Oct. 15, 1910.

Alsk. Corrected in vol. 34

FIELD NOTES OF THE SOUTH LINE OF SHERMAN COUNTY AND THE NORTH LINE OF MOORE COUNTY, TEXAS.

Beginning at an iron pipe 1 1/2"x 3" marked "DALLAM" on north side and "HARTLEY" on south side, from which a pile of small stones east of Hartley road bears S. 45°16'W. 496 varas, and a sand stone 30"x24"x 8" set by ~~W.D.~~ W.D. Twichell for the S.E. Corner of Dallam County and the N.E. Corner of Hartley County bears North 572.7 varas; a stone with Four Pits, north, south, east and west bears N. 21°35'E. 1059.5 varas; Coldwater and Hartley Road crossing on the Palo Duro draw bears N. 30°E. 288.8 varas and a stone set in the ground with four bearing stones, north, south, east and west bears N. 42°57'E. 517.6 varas.

Thence East, tangent to parallel (Observation on Polaris at eastern elongation July 12th. 1910. Azimuth 1°27'. Magnetic declination, 10 o'clock A.M. July 13th, 12°15'E.), at 1110 varas cross small draw (NE), at 1514 enter and at 1568 leave main draw of North Palo Duro, at 1712 varas recross same, at 1901 varas set pipe 1 1/2"x 3 1/2' marked "I" on west side, "S" on north side, "M" on south side and two pits, ~~YEX~~ 0.2 vara north on parallel. 1 mile.

Thence East, at 1351.5 varas cross old road (SSW), at 1901 varas set pipe 1 1/2"x 3 1/2', marked "II" on west side, "S" on north side, "M" on south side and two pits, 0.7 varas north on parallel. 2 miles.

Thence East, at 438.7 varas cross fence (N&S), at 766 varas cross Palo Duro, at 1901 varas set pipe 1 1/2"x 3 1/2', marked "III" on west side, "S" on north side, "M" on south side and two pits, 1.6 varas north on parallel.

Thence East, at 426 varas cross old road (NW), at 489 varas cross fence (N&S), at 1191 varas pass 46.5 varas south of house, at 1440.5 varas cross fence (N&S), at 1571 varas cross Palo Duro (N&S), at 1901 varas set pipe 1 1/2"x 3 1/2' marked "IV" on west side "S" on north side, "M" on south side and four pits, 2.7 varas north on parallel. 4 miles.

Deflect tangent north 0°5'.

Thence East, at 1901 varas set pipe 1 1/2"x 3 1/2', marked "V" on west side, "S" on north side, "M" on south side and two pits, 1.6 varas north on parallel. 5 miles.

Thence East, at 1267.4 varas pass 336 varas north of rock set and four pits, the south west corner of section 17, and the north west corner of section 32, Block 2T, T. & O.R.R. Co., at 1901 varas set pipe 1 1/2"x 3 1/2' marked "VI" on west side, "S" on north side, "M" on south side and two pits, 0.7 varas north on parallel. 6 miles.

Sherman Co Bdry Line 4

Thence East, at 527 varas cross road, at 1901 varas set pipe 1 1/2"x 3 1/2' marked "VII" on west side, "S" on north side, "M" on south side and ~~four~~<sup>two</sup> pits, 0.2 varas north on parallel. 7 miles--.

Thence East, at 1268 varas pass 328.5 varas north of the north west corner of section 30, block 2T., at 1901 varas set pipe 1 1/2"x 3 1/2' marked "VIII" on west side, "S" on north side, "M" on south side and two pits, on parallel. 8 miles.

Thence East, at 25 varas cross old trail (N&S), at 1071 and 1456 varas cross roads, at 1901 varas set pipe 1 1/2"x 3 1/2' marked "IX" on west side, "S" on north side, "M" on south side and two pits, 0.2 varas north on parallel. 9 miles.

Thence East, at 1298.8 varas pass 320.1 varas north of the north west corner of section 28, block 2T., at ~~1901~~<sup>1901</sup> varas set pipe 1 1/2"x 3 1/2' marked "X" on west side, "S" on north side, "M" on south side and two pits, 0.7 varas north on parallel. 10 miles.

Thence East, at 454 varas cross road (SE), at 982 varas cross Palo Duro, at 1006 cross road (NE), at 1324 varas cross fence (N&S), at 1901 varas set pipe 1 1/2"x 3 1/2' marked "XI" on west side, "S" on north side, "M" on south side and two pits, 1.6 varas north on parallel. Polaris at eastern elongation July 21st, bears N, 1° 27' E. 11 miles.

Thence East, at 350 varas cross road (N&S), at 550 varas south edge Palo Duro, at 709 varas cross fence (N&S), at 1284.9 varas cross fence ~~XXXXXX~~ (N&S), at 1663 varas cross road, at 1901 varas set pipe 1 1/2"x 3 1/2' marked "XII" on west side, "S" on north side, "M" on south side and two pits 2.7 varas north on parallel. Deflect tangent N. 0° 5' 12 miles.

Thence East, at 1757 varas head of small canon, at 1901 varas set pipe 1 1/2"x 3 1/2' marked "XIII" on west side, "S" on north side, "M" on south side and two pits, 1.6 varas north on parallel. 13 miles.

Thence East, at 77, 220.6 and 1346.5 varas cross fences (N&S), at 1901 varas set pipe 1 1/2"x 3 1/2' marked "XIV" on west side, "S" on north side, "M" on south side and two rocks set 2.5 varas east and west, 0.7 varas north on parallel, on north slope of hill about 75 varas south of the Palo Duro Creek. 14 miles.

Thence East, at 442 varas south edge Palo Duro, at 457 varas pass 2 varas north of ledge of rock, at 900 varas cross Palo Duro, 1901 varas set pipe 1 1/2"x 3 1/2' marked "XV" on west side "S" on north side, "M" on south

side and two pits, 0.2 varas north on parallel. 15 miles.

Thence East, at 1244 varas cross Palo Duro, at 1360 varas top of bluff, at 1901 varas set pipe 1 1/2" x 3 1/2' marked "XVI" on west side, "S" on north side, "M" on south side and two pits on parallel. 16 miles.

Thence East, at 168 varas cross road (NE), at 1901 varas set pipe 1 1/2" x 3 1/2' marked "XVII" on west side, "S" on north side, "M" on south side and two pits, 0.2 varas north on parallel. 17 miles.

Thence East, at 834 varas cross road (SE), at 1410.8 varas cross fence (SW), at 1901 varas set pipe 1 1/2" x 3 1/2' marked "XVIII" on west side, "S" on north side, "M" on south side and two pits, 0.7 varas north on parallel.

Thence East, at 924 varas west edge old field, at 1341.3 varas pass 336.6 varas north of the north east corner of Section No. 95, Block 3T, T. & N.O. R.R. Co., at 1901 varas set pipe 1 1/2" x 3 1/2' marked "XIX" on west side, "S" on north side, "M" on south side and two pits, 1.6 varas north on parallel.

Thence East, at 624 varas cross Palo Duro, at 1450 varas cross small draw, (S), at 1901 varas set pipe 1 1/2" x 3 1/2' marked "XX" on west side, "S" on north side, "M" on south side and two pits, 2.7 varas north on parallel. Deflect Tangent North 0° 5' 20 miles.

Thence East, at 687 varas cross small canon (S), at 1345 varas cross fence, at 1396 varas pass 328.4 varas north of the north east corner of Section No. 97, Block 3T, at 1901 varas set pipe 1 1/2" x 3 1/2' marked "XXI" on west side, "S" on north side, "M" on south side and two pits, 1.6 varas north on parallel. 21 miles.

Thence East, at 525 varas cross draw, (SE), at 1235 varas cross Palo Duro, (NE), at 1750 varas cross small canon (N), at 1901 varas set pipe, 1 1/2" x 3 1/2' marked "XXII" on west side, "S" on north side, "M" on south side and pile of stone, 0.7 varas north on parallel. 22 miles.

Thence East, at 350 varas cross canon (NW), at 1390 varas cross fence, at 1901 varas set pipe 1 1/2" x 3 1/2' marked "XXIII" on west side, "S" on north side, "M" on south side and two pits, 0.2 varas north on parallel. Polaris at eastern elongation on the night of July 23rd, bears N. 1° 27' E.

Thence East, at 1198 varas cross road (NE), at 1901 varas set pipe 1 1/2" x 3 1/2' marked "XXIV" on west side, "S" on north side, "M" on south side and two pits on parallel. 24 miles.

Thence East, at 1901 varas set pipe 1 1/2" x 3 1/2' marked "XXV" on west side, "S" on north side, "M" on south side and two pits, 0.2 varas north on parallel. 25 miles.

Thence East, at 361 varas cross draw (NE), at 635 varas cross fence, (N&S), at 763 varas cross road (NE), at 1650 varas cap rock, at 1777 varas draw in canon, at 1843 caprock, at 1901 varas set pipe 1 1/2" x 3 1/2' marked "XXVI" on west side, "S" on north side, "M" on south side and two rocks 2.5 varas E. & W. 0.7 varas north on parallel. 26 miles.

Thence East, at 326 varas cross canon (NW), at 475 varas cross road (N&S), at 690.6 varas cross fence, at 1391.4 varas pass 362.9 varas north of the north east corner of Section 103, Block 3T, at 1901 varas set pipe, 1 1/2" x 3 1/2' marked "XXVII" on west side, "S" on north side, "M" on south side and two pits, 1.6 varas north on parallel. 27 miles.

Thence East, at 1901 varas set pipe 1 1/2" x 3 1/2' marked "XXVIII" on west side, "S" on north side, "M" on the south side and two pits 2.7 varas north on parallel. 28 miles.

Thence East, at 1396.6 varas pass 358 varas north of the south east corner of Section No. 76, Block 3T, at 1901 varas set pipe 1 1/2" x 3 1/2' marked "XXIX" on west side, "S" on north side, "M" on south side and two pits 4.4 varas north on parallel. 29 miles.

Thence East, at 456.5 varas cross road (N&S), at 460 varas cross fence (N&S), at 1393 varas cross fence (N&S), at 2347.6 varas set pipe 1 1/2" x 3 1/2' marked "S E SHERMAN" on north side, "N E MOORE" on south side and four large pits, north, south, east and west, 4.8 north on parallel, from which a sand stone marked "S E SHERMAN" and "N E MOORE", set by W.D. Twichell bears north 1046 varas. Polaris at Eastern Elongation bears N. 1° 27' E. July 25 1910.

*I H. B. Spiller Special Surveyor for Moore and Sherman Counties do hereby swear that the above field notes of North line of Moore County are true and that the work was actually done by me on the ground and that the marks natural and artificial are truly described on pages 177-178-179 1910*  
*H. B. Spiller Special Surveyor Moore County*

The State of Texas, )  
County of Moore. ) I, F. S. Makeig, Clerk of the County Court in and for Moore County, Texas, do hereby certify that the above and foregoing is a true and correct copy of the field notes of the north line of Moore County, and the south line of Sherman County, Texas, made by H. B. Spiller, Special Surveyor for said counties, as the same now appears of record in Volume 1, at pages 177, 178 and 179 of the Minutes of the County Court of said Moore County, Texas, and now on file in my office.

Given under my hand and seal of office at office in Dumas, Texas, this 27th day of August, A.D. 1910.

*F. S. Makeig*  
Clerk, County Court, Moore County, Texas.

Sherman Co. Deed line #4

I, O. J. Lughan Co Judge of  
Sherman Co Tex hereby Certify  
that I have examined the above  
and foregoing instrument and the  
same is hereby approved, this the  
7<sup>th</sup> day of September A.D. 1910  
O. J. Lughan  
Co Judge  
Sherman Co Tex

State of Texas +  
County of Sherman) I, C.H. Rowland, Clerk of the County Court in and  
for said County and State, do hereby certify that the above and foregoing  
is a true and correct copy of the Field notes of the survey of the South  
line of Sherman County and the North Line of Moore County, Texas, made by  
H.B. Spiller, Special Surveyor for said Counties, as the same now appears  
on file in my office and of record in my office in Vol. 1 Pages 286 to 290  
inclusive Minutes of said County Court, and that the certificates thereto  
attached of the said Special surveyor and of the County Judge of Sherman  
County are substantially the same as appears on the <sup>Original</sup> hereof on file  
and of record in my office as aforesaid.  
Witness my hand and seal of said Court signed and affixed officially  
at my office in Stratford, Texas, this 13th day of Sept A.D. 1910.

C.H. Rowland Clerk County Court  
Sherman County, Texas.

U<sup>b</sup>  
X/ ante 58987

Sherman & Moore  
S + M by Spiller  
for  
S 15th at 5m  
Sherman Co Bdry Line 4

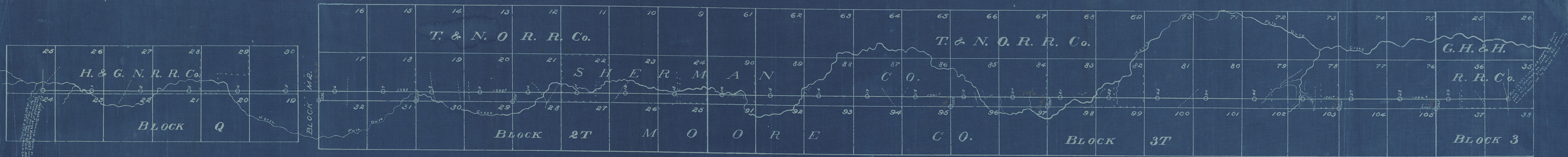
9

original  
for Land Office

Filed for record this 25<sup>th</sup> day  
of August 1910 at 4  
o'clock P. M.  
W. M. McKee  
Clerk, County Court, Moore County, Tex.

FILED Sept 9<sup>th</sup> 1910  
C. N. Rawland Clerk  
County Court, Sherman  
County, Texas.

58388



I, H. B. SPILLER, SPECIAL SURVEYOR FOR DALLAM, SHERMAN AND MOORE COUNTIES, STATE OF TEXAS, DO HEREBY CERTIFY THAT THE FOREGOING IS A TRUE AND CORRECT MAP OF THE BOUNDARY LINE BETWEEN SHERMAN AND MOORE COUNTIES, TEXAS, AS SURVEYED AND MARKED BY ME ON THE GROUND, SHOWING RELATIVE LOCATION OF SECTIONS AND SURVEYS CROSSED BY SAID LINE. SURVEYED JULY 19TH. TO 25TH. 1910.

*H. B. Spiller*  
Surveyor



Filed for record this 25<sup>th</sup> day  
of August 1910 at 7  
o'clock P. M.  
F. S. Makeig  
Clerk, County Court, Moore County, Tex.

The State of Texas,  
County of Moore. I, F. S. Makeig, Clerk of the County Court in and for said County, do hereby certify that the above and foregoing map of the north line of Moore and the south line of Sherman Counties, Texas, is a true and correct copy of the original as the same now appears of record in Volume 1 at page 180 of the Minutes of the County Court of Moore County, Texas, and now on file in my office.

Given under my hand and seal of office at office in Dumas, Texas, this 27th day of August, A.D. 1910.

F. S. Makeig  
Clerk, County Court, Moore  
County, Texas.

The State of Texas  
County of Sherman

I, O. J. Ingham  
Co Judge of Sherman Co Texas  
do hereby certify that I have examined  
the above and foregoing map of the  
south line of Sherman Co and the  
north line of Moore Counties State  
of Texas; and the same is this day  
approved dated Stratford Sherman  
Co Texas this the 2<sup>nd</sup> day of Sept  
1910

O. J. Ingham  
Co Judge  
Sherman Co  
Texas

FILED  
Sept 9 1910  
County Court Sherman  
County, Texas

The State of Texas )  
County of Sherman )

I, C. H. Rowland, Clerk of the County Court of Sherman County, Texas, do hereby certify that the above and foregoing map of the south line of Sherman County and north line of Moore County Texas, made by W. B. Spiller, Special Surveyor for said Counties, is a true and correct copy of the original thereof now on file in my office and of record in Vol. 1 Page 290 Minutes of the County Court of said County.

Given under my hand and seal of said Court signed and affixed officially at office in Stratford, Texas, this 13<sup>th</sup> day of Sept. 1910.

C. H. Rowland  
Clerk County Court  
Sherman County, Texas.

U counter 58790

Sherman Co Barj Line 4