

File No. 80

Boundary of
Smith County

Dated July 25th 1851

See Plat and F/m^s of
Re Survey - Smith & Van Zandt
Co. Line filed 11/17/22
Clark

At a Point that is 36 miles on a straight line
from the Beginning or N. W. Corner of Burke
County, ^{the Bearing} of which (said line) is N. 74° 54' W.

a Hickory Corner 6 in. dia. from which a Mulberry
10 in. dia. bears S. 46° W. 7 varas marked N. W. S. C.
and a Birch 12 in. dia. bears N. W. 3 varas dist.

Thence run South making a line which is
the West Boundary line of said Smith County
and may be designated, by being marked with
three Tacks on the N. and S. Sides of the trees
adja-cent to the said line that is the Tacks being
in the direction of the line. at the distance
of 3800 varas a Post Oak tree 12 in. dia.
marked 2 M. C. L. 4350 vs. Dry Creek Co. N. E.
and with the line 5705 vs. a Blk. Jack 14 in. dia.
~~was~~ marked 3 M. C. L. 7610 vs. Blk. Jack 22 in.
dia. marked 4 M. C. L. 7220 vs. Road to Saline
Co. W. 9505 vs. a Blk. Jack 10 in. dia. marked
5 M. C. L. 11415 vs. Sweet Gum 10 in. dia. marked
6 M. C. L. 11440 vs. Village Creek Co. N. E. 13305 vs.
a Blk. Jack 26 in. dia. marked 7 M. C. L. 15190 vs.
(Crossing Village Creek Another prong) a Red Oak 16 in.
dia. ~~marked~~ 8 M. C. L. 17100 vs. a Red Elm 20 in.
dia. marked 9 M. C. L. 19000 vs. a Blk. Jack 8
in. dia. marked 10 M. C. L. 20910 vs. Hickory
14 in. dia. marked 11 M. C. L. 22800 vs. a Red Oak
6 in. dia. marked 12 M. C. L. 24712 vs. a Red
Oak in. dia. marked 13 M. C. L. 26445 varas to
the Cherokee line made a Corner on a Post Oak
8 in. dia. from which a Red Oak 28 in. dia. marked
W. C. S. C. bears North 2 vs. and a P. O. 18 in. dia.
bears S. W. 10 vs. marked X

Thence S. 45° E. with the said Cherokee line 3250
varas to the Head of the River Neches a Hickory
Corner tree in the forks of two Creeks forming

Said River, from which a Water Oak 20 in. dia. marked
X bears S. 56° W. 14 varas and a Sweet Gum same
size marked X bears S. 34° W. 17 varas distant

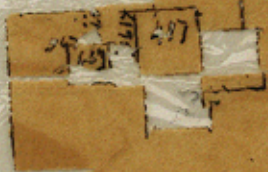
I having been Appointed by the Hon. County
of Smith County at a Special Term of Said Court
held at Tyler on the 29th day of May 1847

"To Survey some of the lines of Smith County"
was directed. To "Commence on Monday the 14th day of
June A. D. 1847 and that the Beginning Point be at
the N. W. Corner of Burk County on the Sabine River
and Run up said River to a Point which is Thirty six
miles on a Strait line from the Corner of said Burk Co.
and Establish a Corner. Thence South to the Cherokee
Boundary line, Thence with said line to the Head of the
Neches River" not proceeding in accordance with
the above order, the said Court at another called Term
on the 3rd day of August 1847 "Ordered that Tho. J. Hays
be reappointed to Run the County line corresponding
to the previous appointment and that said Hays Begin
the work on the 16th day of August 1847 at the N. W.
Corner of Burk County and make report thereof to the
County Court".

Accordingly I commenced the said operation on
the 16th day of August 1847 at the Point designated
by the said Court, and based my calculations on actual
measurement in finding the N. W. corner of Smith County,
from which corner or Point the foregoing Field notes
correctly designate the West Boundary of Smith County from
Sabine to Neches, all of which I Reported to
said Court and is duly recorded in the Clerks office
of said Court in said County, and to all of which
I Certify this 25th day of July A. D. 1851

Tho. J. Hays
Co. Surveyor S. Co.

Saline
River
3 miles



Certify that this sketch is
present: the surveys

present to the N. W
corner of Smith County

as they have been made in
my office

and that a line due West
from the N. W. corner
No. 1. at 485 varies

intersects the line 38 1/2 rods
South of mile tree

25th July 1851

Thos. J. Flays

Co-Surveyor S. Co.

Smith Co. Survey Line 001