

The State of Texas } Plot and field notes
 County of Stephens } of a survey of the West
 line of Stephens County and
 the East line of Shackelford County Texas
 made by virtue of an order issued out of
 Commissioners Court of Stephens County on
 the 7th day of July A. D. 1888, and also of
 an issued out of the County Court of said
 County on the 9th day of July A. D. 1888

Beginning at the North West corner of Steph-
 ens County, a rock set in ground marked
 on E. side "N. W. Cor. S. Co." and on West side "N. E.
 Cor Sd. Co" from which mes. 8" vs S 72 1/2 E. 25.2 vs.
 S fork double Elm 14" N 22 1/4 E 29.1 vs E fork
 double mes. 12" S 82 3/4 E 46.2 vs. Variation taken
 at this point by azimuth 9° 59' E -

Thence South at 157.216 and 274 vs crop
 Gibbons Creek course S. E. 470 vs Branch Co. E.
 1545.8 vs Branch Co. E. 1900.8 vs. Set 1st Twp. S.
 mes 7" N 54° 25' W 38.9 vs mes 12" N 25 3/4 E 32.6 vs.

Thence South 585.6 vs South line of Nancy
 Williams Survey 4387.7 vs E of its S. W. Cor
 1374 vs old Belknap and Griffin road 1900.8
 vs set 2nd Twp. S. P. O. 16" N 81. W 19.4 vs P. O. 8"
 N 41 1/2 E 10.1 vs. Thence South (var. 9-44 E) 1429.9

vs top left bank Clear Fork 1469.4 water's edge
 1526.8 vs top right bank 1900.8 vs set 3rd Twp. S.
 Decan 9" N 51.30 E 27.1 vs top left bank said

stream 1105 vs water's edge left bank 1135 vs
 top right bank Clear Fork 1710. vs top prairie
 hill 1900.8 vs set 4th Twp. S. P. O. 10" N 39 E 76.6
 vs P. O. 30" S 54.12 W 84.6 vs.

formed Elm 24" S 35.30 E 44.4 vs Thence South 60 vs water's edge right bank 113 vs.

Stephens Co Bdty Line 1

1 Thence South 1207.5 vs S. line Sur. 113 T.E. & L. Co
 2 26.7 vs west of its S.E. cor 1813.4 vs pass 22.2
 3 vs W. of S.W. cor Sur. 114 at 1900.8 vs set 5th M.S.
 4 L.O. 10" N. 38.14 ~~W~~ 21.8 vs L.O. 7" N 33¹/₄ E 27.2 vs
 5 Thence South 72 vs Branch Co. E. 799 vs Branch
 6 Co. N.E. 1058. vs Branch 1184. N. line ^{line} Sec. 8 Blk
 7 6 S.P. R.R. Co 741.2 vs W of its N.E. cor 1900.8 vs
 8 set 6th M.S. Triple L.O. 36" S 7.43 W 105.6 vs
 9 ms. 12" N 36.8 E 126.3 vs
 10 Thence South 457 vs and 574 vs Branch Co.
 11 N.W. & N.E. 1023 vs Branch Co N.W. 1184 vs S
 12 line sec 8 & N. line sec 7 Blk 6 S.P. R.R. Co
 13 1159.6 vs E of S.W. cor. of first and 375.6 vs E of
 14 N.W. cor Second 1545.5 vs Branch Co N.E.
 15 1900.8 vs set 7th M.S. on N slope Flat-Top Mt.
 16 ms. 8" S 52¹/₄ W 28.4 vs P.O. 10" S 57.45 E 25.5 vs
 17 Thence South 67 vs top of said mt. 28.2 vs W
 18 from "U.S. & S+" 844 vs set Road stone on Crystal
 19 Falls and Albany Road 1629 vs S line of F. A.
 20 Tandy Survey 62.6 vs E of S.W. cor. and N
 21 line J.E. Michamps sur. 236.6 vs E of N E line
 22 Sur 809 T.E. & L. Co ^{18965.6 vs N.E. line sur no 809 T.E. & L. Co} 74.7 vs S 45. E from its
 23 N cor 1900.8 vs set 8th M.S. P.O. 12" S 6.12 E
 24 111.4 vs ms. 12" N 72. W 57.3 vs. Thence South
 25 870 vs negro creek Co S.E. 907 vs same cr.
 26 Co N.W. 948 vs same cr. Co S.E. 1900.8 vs set
 27 9th M.S. L.O. 16" N 5-37 W 29.4 vs P.O. 18" N
 28 29.48 E 22.2 vs. Thence South 1280 vs and
 29 look variation - 9° 16' E - by azimuth. 1900.8
 30 vs set 10th M.S. P.O. 22" N 27.10 W 16.6 vs
 31 P.O. 20" S 83.23 W 32.6 vs
 32 Thence South 224.5 vs N M^c Dowell crk.

21

Stephens Co. Barbey Lind #1

1 737.8 w n line Sec. no 7 Blk 2 T. & N. O. R. R. Co.
 2 1609.7 w w of its n.e. cor. 1900.8 w set 11th M.S.
 3 mes 14" n 11 E 77.9 w mes 8" n 88-52 w 64.1 w
 4 Thence South 425.1 w (~~var~~ 9°-1'E) n. line
 5 sur 1528 T. & E. L. Co. 265.7 w w of n.e. cor. 459
 6 w Branch co E 598 w McDowell cr. co E. 684 w
 7 top knoll. 1766.3 w A line sur 1527 T. & E. L. Co
 8 265.7 w w of n.e. cor. 1900.8 w set 12th M.S.
 9 P. O. 10" S 1-30 E. 14.3 w mes 9" n 53½ W 16 w
 10 Thence South (var-9° 58'E) 994. w Branch co
 11 S. E. 1206.7 w n line sur 1533 T. & E. L. Co 265.5
 12 w w of its n.e. cor 1360 w Branch 1900.8 w
 13 set 13th M. S. mes. 4" S 75¼ E 8.6 w mes 6" n 70.45
 14 W 10.6 w. Thence South 300 w Branch co 11580
 15 w Branch 647 w n line sur. 1542 T. & E. L. Co 265
 16 5 w w of n.e. cor. 713 w Meyer's Branch co E 780.
 17 w Road Stone near B. & A road 848 w Hubbard's
 18 Creek course n.e. 1475 w Bed Dry Branch co. E
 19 1593 w Dry Br. co. W. 1663 w Dry Br. Co. E. 1761 w
 20 Dry Branch co W 1900.8 w set 14th M.S. mes
 21 10" S 23.42 W 20.7 w mes 13" S 45:30 E 29.7 w
 22 Thence South 79.2 w n. line sur. 1546 T. & E. L. Co
 23 272.8 w w of its S.E. cor 160 w Branch co S W
 24 297 w Branch n.w. 810 top of hill 1420 w S line
 25 sur 1546 T. & N. line sur no 9 Blk 8 T. & P. Ry. Co.
 26 272.8 w w of S. E. cor sur 1546 at 1900.8 w set
 27 15th M.S. L. O. 20" S 4-40 W 25.4 w Fickel L. O. 16"
 28 4116.6. 39.8 w Thence South 138.5 w n. line Sec.
 29 24 Blk 8 T. & P. 531.4 w w. of n.e. cor 322 w Branch
 30 co. W 1054 w Meeks Branch co n.w. 1900.8 w
 31 16th M.S. double P. O. 20" N 7-55 W 83.1 w mes.
 32 12" N 63-30 E 28.1 w

*

1 Thence South 126.5⁰ vs N. line sur 27 Blk 8 77 P
 2 Ry. Co. 556.4 vs W of N.E. cor. 1803 vs Branch co W.
 3 1900.8 vs set 17th M.S. P.O. 30" N 57 1/4 E 48.8 vs L.O.
 4 13" N 31 W 30.3 vs Thence South 31 vs old Road
 5 121 vs N line sur 34 Blind Asylum 567 vs W of N.E.
 6 cor 474 vs Branch co. N.W. 1340 vs old B & Al-
 7 bany Road 1900.8 vs set 18th M. S. mus 6"
 8 S 81-57 E 31.9 vs mus 6" S 38-10 W 57 vs
 9 Thence South 367 vs N. line Sur 55 Blind Asylum
 10 579.4 vs W. of N.E. cor 988 vs Branch course West-
 11 1011 vs Branch Co E. 1126 vs Branch Co. West
 12 1200 vs look variation by azimuth (var. 9° 23 E)
 13 1900.8 vs set 19th M. S. mus 5" S 36.20 E 24.1 vs
 14 do 6" S 45-37 W 74 vs Thence South 362 vs S N.
 15 line sur 56 B. A. 589 vs W of N.E. cor. 987 vs
 16 Branch co W. 1900.8 vs set 20th M. S. mus 6"
 17 S 74.35 E 45 vs. mus 8" N 82 E 86 vs. Thence South
 18 351.5 vs N line Sur 57 B. A. 565.4 vs W of N.E.
 19 cor 577.5 vs Branch 1900.8 vs set 21st M. S.
 20 mus 14" N 45 W 10 vs mus. 13" S 57.55 E 42 vs
 21 Thence South 340 vs deep rocky Branch 349.4
 22 vs N line Sec 7 orphan Asylum 602.7 vs W of
 23 N.E. cor. 940 vs road 1900.8 vs 22d M. S. mus 13
 24 N 3 3/4 W 21.2 vs mus 10" S 26 E 6.1 vs
 25 Thence South 350 vs N line sur. No 13 O. A. 607 vs
 26 W of N.E. cor. 1900.8 vs set 23rd M. S. P.O. 10" N 23.20
 27 W 11 vs mus 6" S 54.45 E 12 vs.
 28 Thence South 308 8/10 vs N line sur 26. O. A. 624 vs
 29 W of N.E. cor crossing Branch 1900.8 vs set 24 M.
 30 S mus. 9" S 79 3/4 E 26 3/10 vs P.O. 12" S 89 1/2 W 50 6 vs.
 31 Thence South 585 vs crossing Branch co S.W.
 32 710 vs Branch co S.E. 1201 vs Breckinridge &

23

Stephens co. Bdry. line #1

1 Belle Plain Road 1209.6 w N. line sur. 50. O. A. 622.8
 2 w w of N.E. cor, 1834 w Branch Co. E 1900.8 w set
 3 25th m. S. in field P. O. 16" S 33 1/4 E 41.8 w P. O. 18" N 42 1/4
 4 E 70.6 w Thence South 346. to 424 w Battle Creek
 5 Co. E 1195. w S. line sur 50 O. A. & N. line sur 37
 6 Blk 7 T. & P. R. Co 631.6 w w of S.E. cor. of first and 538
 7 1000 W of N.E. cor record. 1900.8 w set 26th m. S.
 8 P. O. 13" S 71. W 2 1/2 w do 13" N 51 E 6 w Thence South 597. as ^{marked}
 9 Thence South (var. 9° 33' E) 37 w Branch 470 w
 10 Branch Co N. west 820 w w point mt. 1122 w
 11 Branch 1875 w N line sur 38 Blk 7 T. & P. Ry. Co
 12 140 w E of N.W. cor 1900.8 w set 28th m. S. mus.
 13 5" S 44 W 10.8 w. mus 4" S 74.8 E 10.1 w
 14 Thence South 1119 w creek course west 1900.8 w
 15 set 29th m. S. about 200 w S.W. ^{from} Jas Holtshouse
 16 P. O. 15" S 53.19 E 63.3 w mus. 5" S 42-45 W 30 w.
 17 Thence South 356 1/2 w S. line sur. 38 Blk 7 T & P
 18 R. R. Co. and north line Jas Holt sur. 563 w 883.40
 19 W of S.E. Cor, said sur. 38 at 371.5 w S line
 20 said Holt sur and N. line of N R Bristler
 21 sur 136 w E of N W cor said Bristler sur.
 22 1147 w S. line said Bristler sur. & N line sur
 23 464 S. P. R R. Co 136 w E of their common west
 24 corner 2282 w to S.W. corner of Stephens
 25 County and S.E. corner of Shackelford County
 26 Set Stone in ground marked on E side "S.W.
 27 Cor S C JULY 31. 1889" and on West side "S E
 28 Cor S C" Forked L. O. 20" N 67 1/2 W 110.6 w L. O. 10"
 29 N 59.41 W 132.6 w L. O. 13" N 44.43 W 125.8 w L. O. 18"
 30 S 51.5 W 136.6 w L. O. 8" S 88.31 E 127.5 w. Bearings
 31 marked X mile stones marked on E side
 32 "W L S C..... N" and the number of the mile

1900.8 w set 29th m. S.

1 and on ~~the~~ west side E.L.S.C....M and the
2 number of the mile variations at this corner
3 $90^{\circ}36'E$

4 Survey completed July 31st A. D. 1889.

5 Otho Brown }
6 W. A. Craighhead } chain carriers to 18 miles 1200 lbs
7 Walter Maxwell }
8 Otho Brown } chain carriers to 20 miles 800 lbs
9 Otho Brown }
10 T. F. Cole } chain carriers completing work

11
12 We W. A. Cahart, special surveyor of Shackelford
13 County Texas and T. W. Brown
14 special surveyor of Stephens County Texas
15 do hereby certify that the foregoing survey was
16 made by us on the ground according to
17 law, completed on the date, and with the
18 chain carriers duly qualified as above set
19 forth and that the initial corners, mile
20 stones, survey connections, together with marks
21 both natural and artificial are truly de-
22 scribed and set forth in the foregoing Plot
23 and field notes.

24 This August 7th A. D. 1889.

25 W. A. Cahart
26 Surveyor Shackelford County
27 T. W. Brown
28 Surveyor Stephens County Tex

1 The State of Texas }
2 County of Stephens } I, C. R. Kinchen,
8 Clerk of the County
4 Court, and Ex-Officio Clerk of the
6 County Commissioners Court of
6 Stephens County, Texas, hereby certify
7 that the foregoing is a true and
8 correct copy of the Original ^{Plat and} Field
9 Notes of the West line of Stephens
10 County, Texas, as the same appears
11 of Record on the Minutes of the
12 County Commissioners Court of
18 Stephens County, Texas, Vol C,
14 pages 111 to 114 Inclusive.

16 Given under my hand
17 and official seal, at office in
18 the town of Rockledge, Texas,
19 this September 9th, 1889.

20 C. R. Kinchen
Clerk, County Court, &
Ex-Officio Clerk, County
Commissioners Court
Stephens County, Texas.



1147

1135

26

cont 58862

Stephens Co Bdry ⁴ Line 1
Stephens Co line
West line

Abstract corrected
Aug. 22nd 1891.
Remount



Stephens Co

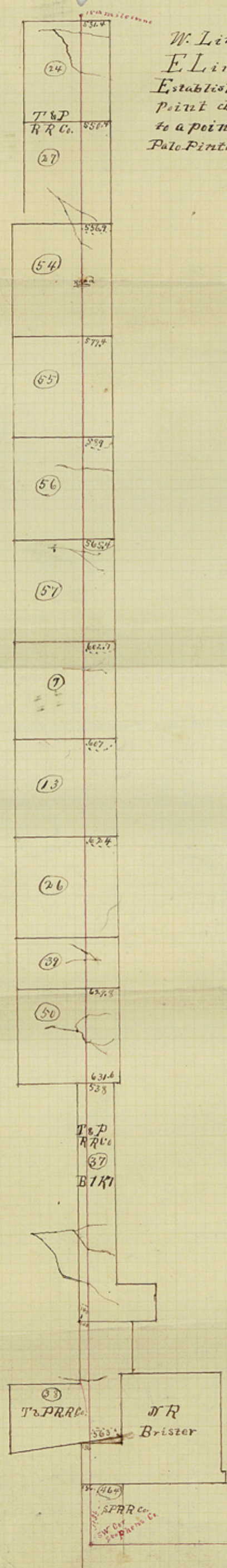
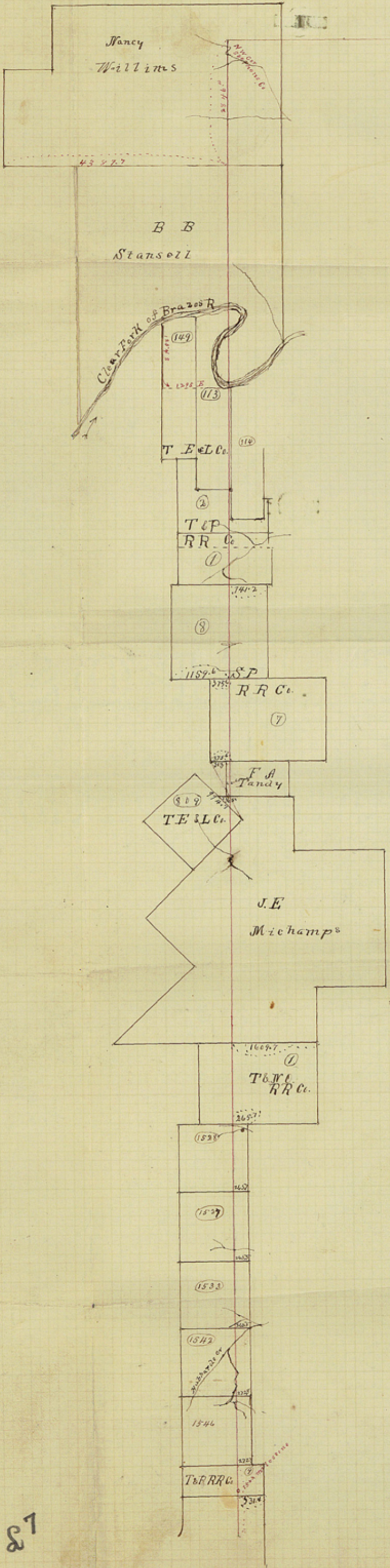
Filed Sept 14/89

32 31 30 29 28 27 26 25 24 23 22 21 20 19 18 17 16 15 14 13 12 11 10 9 8 7 6 5 4 3 2 1

W 770
S 485

Plat
of

W. Line of Stephens Co
E. Line Shaskeford Co
Established by running due South from a
point due west of the SW Cor. of Young Co.
to a point due West of the SW. Cor of
Palo Pinto Co.



27

Stephens Co Bary Line 1

11/14/89
W. H. H. H. H. H.
C

24 5885