

The State of Texas)
 County of Stephens) Plat and field notes of
 a survey of the North
 line of Stephens County Texas made in
 accordance with an order issued ~~of~~ out of the
 County Commissioners Court of Stephens
 County Texas on the 7th day of July A.D.
 1888 and also an order issued out of the
 County Court of said County on the 7th day
 of July A.D. 1888, Beginning at stone
 marked on East side "N.W. Co R P P C" and
 on East side "N.E. Co r S Co. April 16 1889" sit
 in ground in South line of Young County
 30 miles West and 3 miles and 5'33" vs
 South from the North West corner of Parker
 County also 979' vs N. 88° 51' 54" W. from the
 8th mile post of the South line of Young
 County and N.E. corner of a Jas. Finley 640
 acre survey, from which beginning a
 P.O. 14" br S. 38° 20' W. 36 vs do. 10" S 61-
 10 E. 24 vs do 12" N. 89-7 E. 47 vs mes 12" S.
 80 1/2 E. 3' 2 vs Thence with the South
 line of Young Co. N. 88° 51' 53" W. 500 vs
 branch 940 vs 9th mile stone of the
 South line of Young mes. 8" (old wit)
 marked \pm N. 38° W. 25 vs 1900.8 vs sit
 1st mile stone S.O. 12" S 49-50 W. 15' 7 vs do
 12" S 48-12 W. 13' 6 vs. Thence N. 88° 51' 53
 W. 940 vs sit Young Co. 10th mile stone
 old bearing gone, 1900.8 vs sit 2nd mile
 stone mes. 5" S 65 1/4 W. 24.4 vs do 5" N.
 41-48 E. 20.8 vs. Thence N. 88° 51' 53'

1 mile

2nd mile

Stephens Co Bdry Line 3.

1 N 986 vs Young Co. 11th mile stone
 2 (old wit) L.O. marked E N 87 N. 49 vs 1160
 3 vs Davis Creek 1900.8 vs sit 3rd M.S.
 4 in field Thence N 88-51-5:3 N. 517.4 vs L.O.
 5 30 inches in diam, 5'22 vs flat branch
 6 course north 931.6 vs sit, Young Co.
 7 12th mile stone (old wit) L.O. 12" marked
 8 E in cluster of 7 from one root brs. N 48 N
 9 40 vs 1004 vs Branch course North
 10 13'20 vs Branch course North 1900.8 vs
 11 sit 4th M.S. Mes. 3" N. 60 N 23.4 vs
 12 do 12" S 5'5-49 N. 99 vs. Thence N. 88-51-
 13 5:37 N. 736.4 vs old Young Co. 13th
 14 mile Post marked XII in BK M^a marked
 15 Rock" S.L.T.C. 13 M" (old wit) L.O. Stump N. 77 1/2 E
 16 72.4 vs New wit L.O. 15" N. 51-20 E. 105 vs
 17 1577.5 vs Eline Ruthie Campbell sur.
 18 3'06 vs south of its N.E. cor. 1740 vs
 19 Branch course North 1900.8 vs sit 5th
 20 M.S. P.O. 24" S 81-17 E. 64.8 vs L.O. 22" S.
 21 41-7 E. 5'8-7 vs. Thence N. 88-51-5:3 N.
 22 45' vs Duff Branch course North
 23 801 Young Co. 14th M.S. old wit dead Mes.
 24 5" marked E S 5'0 1/2 N. 10 vs New wit
 25 P.O. 13' S 0° 25' N. 49.8 vs 1900.8 vs sit
 26 6th M.S. Double P.O. each fork 49" wit 1 var
 27 P.O. 6" S 84 N. 3.6 vs. Thence N. 88-51-5:37
 28 N 93 varas to neck marriage and Graham
 29 883 vs Young Co. 15th mile post lying
 30 on ground old wit Mes. 5" (fallen on
 31 ground) S 88-3'1 E. 5' vs New wit Mes.
 32 6" N. 68 1/2 N. 28.9 vs do 7" S 9 N. 28.9 vs

3 1/2 miles

4 1/2 miles

5 1/2 miles

6"

1227.5 vs Branch 1342 vs N. line
 Rutby Campbell Sur. 535' vs S of its
 N. W. cor. 1900.8 vs six 7th M.S. S. on
 Rockyhill near old improvement
 P.O. 12" N. 45 1/2 W. 24.4 vs do. 10" N. 13-25
 E. 13.5 vs Thence N. 88-51-5; 3 W. 75' 8.5 vs
 S. line Sur 1113 J.E. & L. Co. 273 vs 865'
 W of its S.E. cor. 860. vs set young
 Co 15th M.S. old wit gone New wit new
 Stump 88 3/4 E. 19. 3 vs 888.7 vs S.E. cor
 Mrs Benedict's E Chemany 1120 vs Dundick
 Branch 1238 vs N line Sur. 1113 J.E. & L. Co
 211 vs N. 25 W. of its S. W. cor. 1901 vs
 six 8th M.S. in Clear Fork Valley Me. 7'
 N. 32-58 W. 17.3 vs do 6" S. 13-38 E. 27.1 vs
 Thence N. 88-51-3; 3 W. 400 vs Branch
 3' 1/3, 3' vs Branch 528.5 vs 663.4 vs
 678 vs 697.5 vs cross Branch course
 North 820.8 vs N. line Sur. 1115 and
 E line Sur. 1116 J.E. & L. Co. 822.6 vs N. 25'
 W. from S. W. cor. of first and 954.2 vs
 from S.E. cor. second 1014.7 vs set
 Young Co. 17th M.S. old wit L.O. 10" marked
 N. 34 E. 16 vs 1294 vs Pevelor Creek
 course North 1644 and 1689 vs same
 creek 1754.4 vs N. line Sur. 1116 & E. line
 Sur. 1119 N. 25' W. 1365.6 vs from S. W.
 cor. of first and 272.2 vs from S.E. cor.
 second 1900.8 vs set 7th M.S. P.O. 12" S
 20-10 E 18.2 vs Thence N. 88-51-5; 3 W. 1122.3
 old Young Co. 18th mile post old wit
 double Mes. Stump N. 73 E 11 vs 1274.7 vs

Stephens co. Bdg. line #3

1 N. line Sur 1119 & E. line Sur. 1020 S 25' E.
 2 805' was from N. W. cor. of first and 28
 3 was N. 25' W. from S. E. cor. of second
 4 1900.9 was set 10th M.S. in Past Oakwoods,
 5 P.O. 8" S 6.27' W. 6 was as 10" S 88-20' W 7.2 was
 6 Thence N. 88-31-5.3' W. 120 was N. line Sur.
 7 1020, 35' 9 was N. 25' W. of its S. W. cor.
 8 5' 69 was pass East reentrant cor. of
 9 E. S. DeLong Sur. 7124 was Breckenridge
 10 and Eliasville Road 1182.2 was old
 11 Young Co. 19th M.S. old wit P.O. 15" marked
 12 X S 88-5' 0 E. 10 was 1900.8 was set 11th
 13 M.S. P.O. 7" N. 73 1/2 E. 7.14 was P.O. 9" S 30-42' W.
 14 17 was Thence N 88-51-3.3+ was 209 was
 15 cross road at N. base Mt and enter field
 16 65' 0 was C. L. at Fork at bend turning
 17 Northward 880 was N. bank of same.
 18 Thence with the South line Young Co. S.
 19 89-5' 0-26.4' W. 1168 1/2 was cross W.
 20 line T. E. & L. Co. Sur. 1206 and E. line Sur.
 21 1207 T. E. & L. Co. 1200 was N. 25' W. of their
 22 common S. corner. 1480 was Young
 23 Co. 20th Mile Past cut "S. L. Y. C. 20 N" on
 24 large sandstone, old wit P.O. 15"
 25 marked X X S 62 1/4' W. 11 was 1900.8 was
 26 set 12th M.S. P.O. 7" S 61-10' W. 12.3 was
 27 P.O. 20" N. 34-35' W 34.3 was Thence S 89'
 28 310-26.4 + W. 10 1/2' W. line Sur. 1207 and E.
 29 line Sur. 1208 S 25' E. 1067 was from N. W. cor.
 30 of first and 701 was from N. E. cor. second
 31 460 was Branch course South 750 was W. line
 32 Sur. 1208 and E. line Sur. 730 S 24' E 870 was

from NW cor of first and 254.6 ves from NE
cor second 865.5 ves Dry Lake 1490.5 ves
pass N 25° W 36.4 ves from NW cor Sur 1209
and 112.3 ves from NE cor Sur 1210 at 1900.8 ves
S 13° 15' N 8. mes 4" S 7 1/2 E 15.2 ves mes 9" S 75 1/2 E
181 ves

Thence S 89° 50' 26.4 W 335.8 ves E line Sur
1211 S 35° E 1104 ves from its NE cor 1080 ves
Branch 1082.3 ves W line Sur 1211 E line Sur
1212 S 25° E 798 ves from NW cor of the first
and 1238 ves from NE cor second 1475 ves old
Young Co. 22nd mile post RK md marked Stone
"22 MSLYC" old with P.O. 881-30 E 50 1/2 ves S.O. Stamp
10" S 41° E 47 1/4 ves 1791.8 ves Branch running South
1827 ves W line Sur 1212 S 25° E 927 ves from its
NW cor 1900.8 ves S 14° 15' N 8 E hill side
west of rocky hollow N Run 10" Double
P.O. 1642 E 12.5 ves mes 4" N 3 W 13.6 ves

Thence S 89° 50' 26.4 + N 8' 00 ves Branch course
South 644.5 ves Branch course South 1400 ves
old Land cor 1430 ves Branch course SW
1465 ves old Young Co 22nd mile post old stone
X RK md (marked RK 23 MSLYC) old with P.O. 15" marked X
111 S 7° E 18 ves P.O. 15" marked YL 6 ves East 8 ves
1811 ves Wagon Timber Creek 1900.8 ves S 14
15" N 8. in field P.O. 8" S 79 E 391 ves P.O. 8" S 85 E
71.2 ves

Thence S 89° 50' 26.4 W passing over Rocky
hill 775 ves Branch and then up over Rocky
hill 1284.7 ves to Young Co. 24th mile post
RK md (stone marked 24 MSLYC old with P.O. 14
for outlet marked) S 6 E 12 ves P.O. 8" marked XIV N 61

30 C S vs new with P.O. 7 N 4 3/4 W 9.9 vs 1900.8 vs
 set 16th M.S. in drain passing old land
 corner at 1291.8 vs and 1398.8 vs P.O. 9" 88 3/4
 C 94 vs P.O. 15" S 80 3/4 W 83.6 vs
 Thence S 89-50-26.4 W 316.5 vs Branch course
 north 968.4 vs old land corner 1084.5' vs set
 Stone on Crystal Falls and Fish Creek Road
 1240 vs old Young Co 25th mile past RK md
 marked Stone 25' MSLYC old with P.O. 9' N 16 C
 2 vs 20 15" S 4 C 8 vs (fallen) new with P.O. north
 11 vs 1384.7 vs land cor RK md 14938 vs
 Branch course north 1900.8 vs set 17th M.S.
 in ^{small} prairie vs 10" S 39-12 C 31.9 vs P.O. 8" N 72-80 W
 4 3.2 vs
 Thence S 89-50-26.4 W 1678 vs 2.04 vs Branch
 556 vs Branch course N 580 vs old land cor
 RK md 1240 vs set Stone for Young Co 26th
 mile Stone old with destroyed 1371.5 vs RK
 md 1413 vs Branch course N.W. 1397 vs Branch
 course north 1900.8 vs set 18th M.S. P.O. 10" S 15-
 13 W 37.4 vs P.O. 10" N 25-50 W 54 vs
 Thence S 89-50-26.4 W 550.5 vs RK md 1388.8 vs
 RK md N.W. cor Sec 2 R 6 S P R R Co P.O. 18" N 6 1/2
 W 13 vs 205" S 42 W 7 vs 1461 vs Branch cor N
 1582.8 vs RK md in Clin Sam Reppers Sur
 3 vs S 2 line N C cor 1900.8 vs set 19th M.S.
 about 20 vs N.W. of Robt Britton's Dam P.O. 6"
 S 61 C 8.7 vs 209" N 7 1/2 W 8 vs
 Thence S 89-50-26.4 W 150 vs Huffstutts Cr Co
 S 212 vs Same Cr Co N 70 N 260 vs Branch cor N
 394 vs Huffstutts Cr Co S 3' 75" N 44 Branch
 Co S 583 vs N line S R Peppers Sur 43 vs

Stephens Co. Baby. W. #3

1 S of its NW cor 635' vs Potts
 2 N.E. cor RK md on E. hill side P.O. 34.618 vs
 3 1223 vs pass RK md 1211 vs sek Young Co 285
 4 M.S. in old RK md old with P.O. 16" N 58 3/4 E 2.8
 5 vs 1639 vs NW. cor Potts Sur 1694 vs drain
 6 1740 vs RK md P.O. mks x 10" N 2 vs do 8 3/4 W
 7 6.4 vs 1900.8 vs sek 20' 5" M.S. P.O. 10" N 7-8' E 10 vs
 8 do 12" S 57-61 W 20.8 vs
 9 Thence S 89-50-26.4 W 109 vs Branch Co S.
 10 189.2 vs land cov in small prairie 278 vs
 11 RK md 389.4 cor C.W. Townsend Sur. P.O. 10" N
 12 110 E 3 1/2 vs do 12' N 86 W 2 1/2 vs 83' 0 vs old RK md
 13 ~~40 E 2 1/2 vs do~~ Co S. 1099 vs Branch Co S 1240 vs
 14 sek Young Co 29' 5" M.S. at N.E. cor old house old
 15 with mes 6" mks x 19 x 37 m E 2.6 vs mes stump
 16 N 67 1/4 W 23.1 vs 1586 vs top of stump rocky
 17 hill 1715 vs Kings cr Co S. E. 1900.8 vs sek
 18 21' M.S. mes 6" N 64 E 15.8 vs mes 6" S 18-25' W 9.4 vs
 19 Thence S. 89-50-26.4 W 1243 vs S.W. cor Young
 20 Co. old RK md mes 15" marked S.W. Cor VC 6 vs
 21 N 56.30 E 17 vs mes 12" marked xxx VC 6 vs S 30 E
 22 94 vs Thence on both old sites bearing old
 23 marks ^{given} above) drive mulberry stake in ground
 24 18 inches at cor sek ~~tree~~ in center from
 25 which took variation by azimuth April
 26 25' 13 1889 (var 9.39 E) Thence west 657.8 vs
 27 in old 1900.8 vs sek 22nd M.S. P.O. 10" in
 28 cluster of 4 from 1 stump N 23-30 E
 29 5.8 vs P.O. 10" N 63-20 W 16 vs
 30 Thence west 836 vs Branch Co N 1469 vs
 31 Clinch Sur. 668 S. E. V.S. Co 421 vs N of its S.E. cor
 32 1540 vs Branch 1900.8 vs sek 23rd M.S. P.O.

Stephens Co. B. Map. line #3

1 9" in Yipple cluster N 76-50 W 25.8 W P.O. 5 in
 2 Yipple cluster S 75-50 W 28-8 W
 3 Thence west 744 vs Branch 969 vs Branch 1065
 4 vs E line Sur. 6694 C. & L. Co 100 vs N of its S.E.
 5 Co. 1100 vs pass about 2000 vs N of medicine mound
 6 1900.8 vs Sec 24th M.S. mes 4th N 30 4th E 28.2 vs mes
 7 S 8-30 W 2.3 vs
 8 Thence west 218 vs Branch Co N 53rd vs Branch
 9 Co. N 58th vs Branch Co. S.E. 691 vs Branch Co N
 10 736 vs Branch Co S 825 vs Branch Co N 1248
 11 vs E line Sur. 2243 C. & L. Co 103 vs N of its S.E.
 12 Co. 1900.8 vs Sec 25th M.S. mes 10th S 47-15 E
 13 29.2 vs mes 9 N 38-30 E 7.4 vs
 14 Thence west 578 vs Branch Co S 886 vs Branch
 15 Co S. 1425 vs W line Sur. 2243 C. & L. Co 104.8
 16 vs N of its S. W. Co. also E line Sarah Blythe Sur
 17 1883.8 vs Branch Co S 1900.8 vs Sec 26th M.S. in
 18 large rk me in forks of branch Co S
 19 Thence west 3 vs Branch 2846 vs Branch Co S.E.
 20 1652 vs Breckenridge & Throckmorton road
 21 1773 vs Branch Co S 1900.8 vs Sec 27th M.S. to
 22 P.O. 20th S.E. 20 vs P.O. 9th N 51 W 4.2 vs
 23 Thence west 680 vs old wire Road 818 vs W line
 24 Sarah Blythe Sur. 720 vs N and 142 vs C of
 25 N.W. Co. D.P. Hand Sur. and E line Geo. Wayman
 26 Sur. 1978 vs N 142 vs E of N.E. Co. G.P. Reuter
 27 Sur. N 1992 vs Branch Co S 1900.8 vs Sec 28th
 28 M.S. mes 10th S 89.4 E 73 vs mes 8th N 22.50 E 77 vs
 29 Thence west 225 vs Branch 245 vs Branch
 30 333 vs lake 1900.8 vs Sec 29th M.S. mes 15th S
 31 9 E. 320 vs mes 12th S 20 W 84 vs
 32 Thence west 679 vs Branch Co S 748 vs W

Stephens Co. B. dig. in 43

Line said Waygoner Sur 1978 vs N. from
its S.W. Cor, 900.8 vs Set North West corner of
Stephens County in Nancy Williams Survey
2346.4 vs North and 4387.7 vs East of its S.W.
Cor, a stone set in ground for N.W. corner of
Stephens County marked on East side "NW
Cor S Co and on W side N F. Cor Sd Co and on
N side S.L.T.C from which comes 8' vs S 72 1/2
E 25.2 vs S prong double Elm 14" N 22 1/4 E 29 1/2
vs E prong double mes. 1238245 C 46.2 vs
Bearings marked \bar{x} mile stones Stephens for
County on the South line of Young County
are marked "N L S C. M" and the number of the
mill and ~~and~~ marked Young County mile
stones "S L Y C. M" with number of the mile
west of the S.W. Cor. of Young County mile
stones were marked "S L T C" on north side
and on South side as as above described

W. A. Craighoads Chain

@ The Down } Carriers

Corner established April 27th 1889

Bearings marked \bar{x} mile stones for Stephens
County marked on South side N L S C. M with
the number of the mill Young County mile
stones marked on north side S L C. M with
the number of the mill stones on the South
line of Throckmorton County marked
on the north side S L T C.

1 I, H. Brown Special Surveyor of Stephens
2 County Texas do hereby certify that the
3 foregoing survey was accurately made
4 by me on the ground according to
5 Law completed on the date and with the
6 chain & courses of said duly qual-
7 ified and that the corners and line mile
8 stones survey connections together with
9 marks both natural and artificial are
10 truly described and set forth in the
11 foregoing plat and field notes
12 This August 7th 1889

13
14 H. U. Brown
15 Special Surveyor of Stephens County

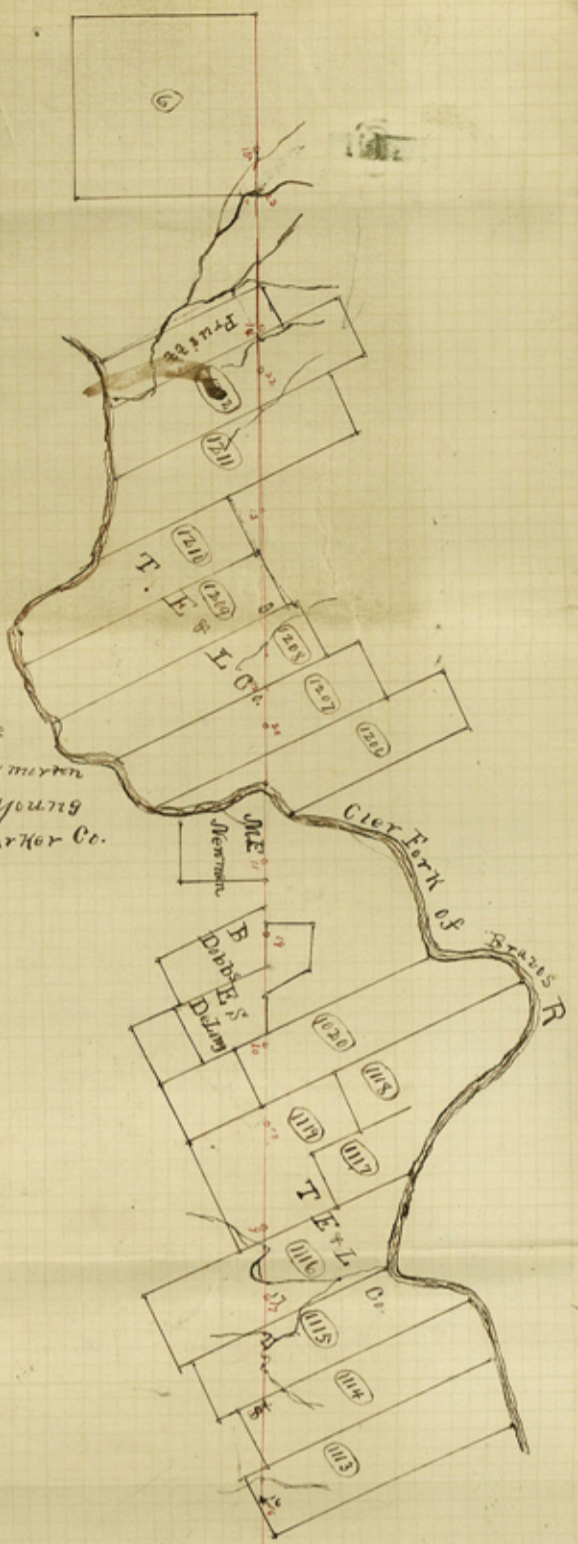
16 The State of Texas } J. C. Kiecker,
17 County of Stephens } Clerk of the County Court
18 and Ex-officio Clerk of the
19 County Commissioners Court of Stephens County,
20 Texas, hereby certify that the foregoing is
21 a true and correct copy of the original
22 Plat and field notes of the North Line
23 of Stephens County, Texas, as the same
24 appears of record on the Minutes of the
25 the County Commissioners Court of Stephe-
26 County, Texas, Vol. C, pages 98 to 102
27 inclusive.

28 Given under my hand and
29 official seal, At office in the town
30 of Brockenridge, Texas, this Sept. 9th, 1889.

J. C. Kiecker, Clerk County Court
Ex-officio Clerk of the County
Commissioners Court, Stephens
County, Texas.

Stephens Co. Bdy. Line #3





200000000 per inch

Plat of the North line of Stephens Co. & portions of the South lines of Young & Throckmorton Co. run from a point in the South line of Young Co. 30 miles West of the West line of Parker Co.

