

File No 81
South Adjutant of
Stephens Co

Filed July 18th 1881

See endorsement on re-
port by Chf Draftsman.

State of Texas Field Notes of the South
 County of Stephens boundary line of Stephens
 & the North boundary line of
 Eastland Counties

Beginning
 Variation
 9° 30'

at a stone set in the ground and marked S.W.
 Cor. Ste. Co. & N.W. Cor. EC from which a Mesquite
 Mkd SW Cor. S.C. br. N46° E. 120 v. a Mesquite Mkd
 SW SC NW CE br. S. 75° E 120 v.

This Stone is 515 W and 380 v. South of the
 N.E. Corner of 1/4 section N° 99 University land
 Thence East 515 v. crossed the East line of University
 1/4 section N° 99. 380 v. South of its N.E. Corner also
 crossed the West line of Section N° 465 S.P.R.R. Survey
 556 v. from its N.W. Corner. On East at 1870 v.
 crossed a branch 1900 v. at 1st Mile Stone Mkd
 SCL II on N & ECL II. on South from which
 a L.C. Mkd ECL I br. S 73° W 60 v. & L.C.
 Mkd SCL I br. S 77° W. 48 1/5 v.

Thence East at 25th crossed the East line of S.P.R.R. Section
 N° 465 ⁷⁴⁰ v. from its N.E. Corner also the West line of
 Sec 464 S.P.R.R. same distance from its N.W. Corner
 on East at 793 v. crossed E line of 464 & W line of
 463 at 1169 v. crossed branch (at 1200 v. crossed
 board branch course N & S at 1400 v. Top of
 High Hill at 1900 v. at 2nd Mile Stone Mkd
 SCL II on N & ECL II on the south side from
 which a L.C. Mkd SCL br. N 55 1/2° E 45 v. &
 L.C. Mkd ECL br. S 72 1/2° E 79 v.

Thence on East at 880 v^m cross the East line of Sec
463 & N line of sec 462. S.P. R.R. Co 740 v^m S of the
N.E. Cor. of 463 & 740 v^m S of N.W. Cor. of 462 on East
at 1900 v^m set 3rd mile stone Mk'd SCL III on N
& ECL III on south said stone is in S.P. R.R. Section
462. 740 v^m S and 1100 v^m East of the N.W. Corner of
said section from this stone a P.O. Mk'd SCL
brs N 64 1/4 W 21 1/2 v^m a P.O. Mk'd ECL brs S 36 1/2 E 7 1/2
Varas Thence East at 100 v^m a branch at 540 v^m
West Decau Creek on East at 1900 v^m set stone
Mk'd SCL IV on N & ECL IV on south from
which a mesquite Mk'd SCL brs N 6 1/2 E 28 v^m
a L.O. Mk'd ECL brs S 33 1/2 E 12 1/2 v^m.

Thence East at 1400 v^m Valley of East fork of Decau
Creek on East at 1900 v^m set mile stone on top
of high hill Mk'd SCL V on N and ECL V on
south from which a mesquite Mk'd ECL
brs S 54 1/2 W 13 1/2 v^m a L.O. Mk'd SCL brs S 68 1/2 W 26 v^m.

Thence East at 960 v^m Crossed the West line of R.A.
Pace Survey 580 v^m path from its N.W. corner
on East at 1900 v^m set stone Mk'd SCL VI on N
& ECL VI on south from which a mesquite Mk'd
SCL brs N 35 1/2 E 59 v^m a mesquite Mk'd ECL brs
S 54 1/2 E 63 v^m.

Thence East at 180 v^m cross main prong of Decau Creek
at 440 v^m top of high hill on East at 1900 v^m
at foot of a Hill set 7th mile stone Mk'd SCL ~~IV~~

VII on N & ECL VII on south from which a
double L.O. Mkd. SCL on Right & ECL on
left bears N 6° N & N 5° N 80 2/3 m

Thence East at 1540 v^r cross branch course N & E
at 1900 v^r at 8th Mile Stone on the West bank of
Cedar ~~Creek~~ Mountain Creek said stone is
Mkd SCL VIII & ECL VIII bearings a L.O.
Mkd SCL N 31° E 7 3/5 a P.O. Mkd ECL N 74 1/2
E 9 1/5 v^r Thence East at 90 v^r crossed
Cedar Mountain Creek on East at 550 v^r crossed
the ~~South~~ West line of the N.W. Merrill Survey
650 v^r South from its N.W. Corner on East at
1760 v^r crossed (Sandy or 45 Mile Creek)
at 1900 v^r at 9th Mile Stone Mkd SCL IX
on North & ECL IX on south from which a
Large P.O. Mkd SCL brs S 65 1/2° E, 8 3/5 v^r a
P.O. Mkd ECL brs S 34 1/2° E 9 1/5 This stone is in
the N.W. Merrill Survey 550 v^r from its East
line and 650 v^r South from the N. line
Variation 9° 28'

Thence East at 550 v^r crossed the East line of the
N.W. Merrill Survey and the West line of
the G.W. Olick survey 650 v^r South of its
N.W. Corner Thence East 1900 v^r at 10th
Mile Stone Mkd SCL IX on N on ECL IX
on S from which a L.O. brs N 45° N 86 2/3 m
Mkd SCL a L.O. Mkd ECL brs S 85 1/4° E 14 3/5 v^r
This stone is in the G.W. Olick survey -

Thence East at 680 at 900 at 1200 and at 1380 v. Crossed
spring of little sandy creek at 1400 & 1440 v.
head of little sandy creek on east at 1900 v.
Set 11th Mile Stone Mkd SCL XI on N. and ECL
XI on South No bearings convenient this stone
is also in the G. A. Click survey

Thence East at 1900 v. set the 12th Mile Stone Mkd
SCL XII on N. & ECL XII on South from which
a P.O. Mkd ECL brs S 51° E 2 1/2 v. a P.O. Mkd SCL
brs S 6 1/2 v. This stone is 30 v. East and 650 v.
S. of the N.E. corner of the G. A. Click survey

Thence East at 1900 v. set 13th Mile Stone Mkd SCL
XIII on N. & ECL XIII on the south from
which a Large P.O. Mkd SCL brs 82 1/2° W.
48 v. a P.O. Mkd ECL brs S 72 3/4° W 46 v.
this stone is in section N^o 456 S.P.R.R. Co
Survey 855 v. West and 1103 v. N. of its
S.E. corner. Thence East at 855 v. crossed
East line of section N^o 456 and West line
of section N^o 457 S.P.R.R. Co Survey
797 v. South of the N.E. corner of sec 456 & N.W.
Cor. of 457 on East at 1640 v. Crossed
West fork of Dick Creek at 1900 v.
Set the ^{SCL} XIV Stone Mkd XIV on N. and
ECL XIV on south from which a P.O.
Mkd ECL brs S 68° E 1 1/8 v. a P.O. Mkd
SCL brs N 70 1/2° W 112 v. This stone is in section N^o
457 S.P.R.R. Co survey

8652^m West and 7972^m south of its N.E.
Corner Thence E at 1900^m at 15th Mile
Stone on the West bank of Middle Duck Creek
stone Mkd SCLXV on N. + ECLXV on south
from which a P.O. Mkd SCL by N 84¹/₂ W 240^m
a P.O. Mkd ECL by N 68¹/₂ E 11³/₄ 7^m

Thence East (Variation 9° 26' E) at 1800^m East base
of Mountain at 1900^m at 16th Mile stone Mkd
SCLXVI on North and ECLXVI on south from
which a P.O. by S 87° E 182^m Mkd ECL a
P.O. Mkd SCL by N 65° E 32³/₄ 2^m -

Thence East at 1160^m crossed prong of Duck Creek
on East at 1360^m. Crossed Brickmudge and
Cattaud Road at 1900^m at 17th Mile stone
on top of hill stone Mkd SCLXVII on N. + ECL
XVII on south from which a P.O. Mkd SCL by
N 56¹/₂ W 15³/₄ 2⁵/₈ a P.O. Mkd ECL by S 50° E 162^m

Thence East at 1900^m at 18th Mile stone Mkd SCLXVIII on
N. + ECLXVIII on the south from which a P.O.
Mkd SCL by N 87° E 16³/₄ 2^m a P.O. Mkd ECL by
S 62¹/₂ E 232^m Thence East at 1900^m at 19th
Mile stone Mkd SCLXIX on N. + ECLXIX on the
South from which a P.O. Mkd ECL by S 71° N
112^m a P.O. Mkd SCL by N 52° E 17³/₄ 2^m

Thence East at 916^m crossed the East line of section N^o
128. & West line of section N^o 127 N.E. & B.R.R. Co Survey
715^m North of the S.E. Corner of section N^o 128
and S.W. corner of section N^o 127 on East 1900^m

set 20th Mile Stone Mk'd SCLXX on Road ECL
XX on south from which a P.O. Mk'd SCL by
N 4° E 5 2/4 a P.O. Mk'd ECL by S 3° W 16 2/4 this
stone is 984 2/4 East and 715 2/4 N. of the S.W.
Corner of Section No. 127 A.T. & B.R.R. Survey
Thence East at 1900 2/4 set 21st Mile Stone Mk'd SCL
XXI on North and ECLXXI on south from
which a P.O. Mk'd SCL by N 13 1/2° W 3 3/5 2/4 a
P.O. Mk'd ECL by S 44 1/2° W 6 3/5 2/4. This stone
is on the S.E. 1/4 of Section No. 126 A.T. & B.R.R.
Survey 984 2/4 East and 715 2/4 N. from the
S.W. Corner Thence on East at 1900 2/4
set 22nd Mile Stone Mk'd SCLXXII on North
& ECLXXII on south from which a P.O.
Mk'd SCL by N 41 1/4° W 1 1/5 2/4 a P.O. Mk'd
ECL by S 76 1/2° W 15 3/5 2/4 This stone is in
Section No. 125 A.T. & B.R.R. Survey 984 2/4
East and 715 2/4 N. of its S.W. corner

Thence on East at 916 2/4 crosses the East line of Section
No. 125 A.T. & B.R.R. Survey 715 2/4 N. of its S.E.
Corner and 61 2/4 N. of the N.W. Corner of J. O. Barnes
Preemption on East at 1900 2/4 set 23rd Mile Stone
Mk'd SCLXXIII on N. & ECLXXIII on south
this stone is in Road rough 34 2/4 East and
61 2/4 N. of the N.E. Corner of J. O. Barnes Preemption
and the N.W. Corner of A. J. Bosty Preemption
Thence on East at 1330 2/4 Crossed the West line of the

At Harms Survey 990 vs. N of its S.W. corner
on east at 1900 vs. set 24th Mile Stone ^{SCL} XXIV
on N. and ECL XXIV on south from which
a P.O. Wkd SCL brs N $13\frac{1}{2}$ W $4\frac{3}{8}$ vs. a P.O.
Wkd ECL brs S $47\frac{1}{2}$ E $4\frac{1}{2}$

Thence East at 1300 vs. crossed the East line of the
Harms Survey 40 vs. South of the S.W. corner
of Mrs. Adair's Preemption on East at 1647 vs.
crossed the West line of D. J. Bullock's preemption
35 vs. south of his N.W. corner on East at 1900 vs.
set XXV Stone Wkd SCL XXV on N. and ECL XXV
on south from which a P.O. Wkd SCL brs S $45\frac{1}{2}$ E
10 vs. a P.O. Wkd ECL brs S $13\frac{3}{4}$ E $15\frac{3}{8}$ vs. This
stone is S $35\frac{1}{2}$ vs. and N $7\frac{1}{2}$ vs. from the S.E. corner
of Mrs. Adair's Preemption

Thence East at 372 vs. crossed the East line of
Variation D. J. Bullock's Preemption 35 vs. south of
9° 24' E his N.E. corner on East through heavy
sand rough at 1900 vs. set 26th Mile Stone
on east edge of rough Wkd SCL XXVI
on N. and ECL XXVI on south a small
Black Jack Wkd SCL brs N $27\frac{1}{2}$ W $10\frac{3}{8}$ vs.

Thence East at 800 vs. Eastern base of Mountain
at 1200 vs. G. & P. Rail Road in D.R.
Kuchel's Survey on East at 1900 vs.
set the 27th Mile Stone on a triangular
point of Rocks where North Palo Pinto
Creek runs East and then suddenly turns

North this stone is on a very high point and
is Mkd SCLXXVII on N. and ECLXXVII on south
Thence East at 400 vs. Brink of Palo Pinto Creek bluff
at 542 vs. Cross Palo Pinto ~~Creek~~ Gorge at 1900 vs.
set 28th Mile Stone Mkd SCLXXVIII on N. and ECL
XXVIII on south from which a Large P.O. Mkd
SCL by N 21 $\frac{1}{2}$ E. 76 $\frac{3}{4}$ a P.O. Mkd ECL by S 67 $\frac{1}{2}$
73 $\frac{3}{4}$ vs. Thence on East at 1900 vs. set 29th
Mile Stone at foot of High Mountain (known
as Hungry hollow Mountain) no bearing
convenient said stone is Mkd SCLXXIX
on N. and ECLXXIX on South.

Thence East at 400 vs crossed the O Bailey West line
300 vs N of its S.W. Corner on East at 1132 vs a
point 300 vs N of J. B. Andersons N.E. Corner
on East at 1900 vs set 30th Mile Stone Mkd SCLXXX
on North ECLXXX on south from which a P.O.
Mkd SCL by N $\frac{1}{2}$ N. 8 $\frac{1}{2}$ vs. a P.O. Mkd ECL by S 47 E
3 $\frac{1}{8}$ vs this stone is in the O Bailey survey 265 vs West
and 45 vs south of the S.E. corner of J. A. Hartfords
Preemption also 187 vs West and 45 vs south of the
N.E. corner of H. F. Davis Preemption

Thence on East at 800 vs come to the old corner
Palo Pinto County line where set a stone
Mkd S.E.S.C. ^{Cor} from which a P.O. Mkd S.E.C.S.C
by N 20 $\frac{1}{2}$ E 6 vs
Amshel June 22nd 1880

W B Laddin } ch
J S Gruner } ch
M Henderson } ch
Douglas Daves } ch

I R A McVilly Surveyor of Stephens
County do hereby certify that the above
Survey was made according to Law,
that the limits boundaries and Stones
with the marks natural and artificial
are truly described in the foregoing plat
and field notes Witness my hand
this ^{June 9th} 29th 1880

R A McVilly
C. S. Stephens Co. Tex.

The State of Texas
County of Stephens } D. W. Hullum County
Clerk of Stephens County Tex.

is a true and correct copy of the original

do hereby certify that the within & foregoing
Report of R A McVilly County Surveyor
of Stephens County of the South Boundary
line of Stephens ^{County} as established by Law, was
received & approved by the County Commis-
sioners Court of said County of Stephens
on the 2nd day of July 1880, was duly &
correctly spread on the minutes of said
Court. Given under my hand & the

seal of said Court in Office
in Brickburg this 11th day of
July 1881

D. W. Hullum County Clerk
Stephens County Tex



Stephens Co. Cd. q. Lin #81

Stephens Co Bdry Line 81

Stephens County.

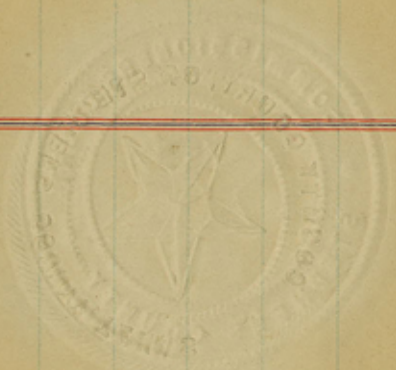
Field notes of Southline.

Filed July 18th 1881.

Rhoads Fisher
Chf. S. R.

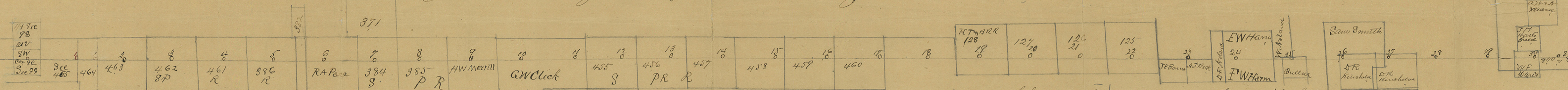
W. Warner does not agree
with the one established in 1879.
(The field notes of Shackelford Co.)
also the Surveyors of this ad-
joining Counties did not par-
ticipate in running the line.

begins
on Sec 99 Community Land



9185 4 58916

South Boundary line of Stephens County



The State of Georgia } I D W Bullum Clerk of Stephens County do hereby certify that the above and foregoing Map is a true and correct copy of the original Map accompanying the report of
 County of Stephens } R A McVilly County Surveyor of Stephens County of the South boundary line of Stephens County as established by him and was received & approved by the County
 Commissioners Court of said County of Stephens on the 2nd day of July 1880 & was duly & correctly spread on the Minutes of said Court
 Given under my hand & the seal of said Court at Office } D W Bullum Co
 in Brunswick this 11th day of July 1881 } Clk S. C. Let

1

7-11-1881