

The State of Texas } Field Notes of the N. B. L. of Stonewall  
County of Stonewall } and E. B. L. of Kent Counties

Beginning at a Mesquit post 4 inches  
Square Marked X on East and west sides with  
four pits 8 feet apart and Mound of dirt around said  
post. was set for the South East corner of Dickens county  
and is 6956  $\frac{8}{10}$   $\frac{8}{10}$  North and 3223 East of the South west corner  
of Blk. F. and N.W. corner of Blk. D. H.V.T.C.R.R.

1<sup>st</sup> Thence South on first mile at 1900  $\frac{8}{10}$   $\frac{8}{10}$  vs a Mes post  
Marked on East side W.L.S.C set on top of a high hill from which  
an Earth Mound by W. 10  $\frac{8}{10}$

2<sup>nd</sup> Thence South on 2<sup>nd</sup> mile crossing three deep canyons  
at 1900  $\frac{8}{10}$   $\frac{8}{10}$  vs a Mes post Marked on East side W.L.S.C.M  
on West side K. 2.M

3<sup>rd</sup> Thence South on 3<sup>rd</sup> mile at 400 vs a deep canyon 500 vs  
a canyon at 1900  $\frac{8}{10}$   $\frac{8}{10}$  vs a Mes post Marked on East side  
W.L.S.M. from which the West point of Double Mountain  
by 8. 10. E

4<sup>th</sup> Thence South on 4 mile at 1256 vs the N line of section  
No 432, Blk. D. H.V.T.C.R.R. Co. at a point 3223  $\frac{8}{10}$   $\frac{8}{10}$  E of the N.W.  
corner of said, Blk. D. at 1900  $\frac{8}{10}$   $\frac{8}{10}$  vs a concrete stone set in  
forks of a canyon

5 Thence South on 5<sup>th</sup> mile at 110 vs deep canyon at 520  
vs old Road at 1900  $\frac{8}{10}$   $\frac{8}{10}$  vs a Mes post Marked W.L.S. 5  
on East side set in low Mesquit flat

6 Thence South on 6<sup>th</sup> mile at 1300 vs a canyon at 1900  $\frac{8}{10}$   $\frac{8}{10}$  vs  
a Mes post on North bank of South Croton Creek  
post Marked W.L.S. 6.M

7 Thence South on 7<sup>th</sup> mile at 70 vs bank of Croton Creek  
at 220 vs South bank of Croton Creek at 1900  $\frac{8}{10}$   $\frac{8}{10}$  vs a  
Mes post on top of high ridge Marked W.L.S. 7.M. on East side

8 Thence South on 8<sup>th</sup> mile at 100 vs a canyon at 1500  
vs a canyon at 1600 vs a canyon at 1900  $\frac{8}{10}$   $\frac{8}{10}$  vs a Mes  
post set on N slope of hill from which the Kent  
County's surveyors 8 mile Mound by 23  $\frac{3}{4}$  W. 54 vs N  
end of red hill by 24  $\frac{1}{2}$  W

- 9 Thence South on 9. mile at 1520 vs cross deep canyon at 1900 $\frac{8}{10}$  vs a Mes post set on South bank of small Canyon Marked on east side W.L.S. 9. M
- 10 Thence South on 10<sup>th</sup> Mile at 1550 vs a canyon at 1900 $\frac{8}{10}$  vs a Mes post Marked W.L.S. 10. M. on east side set on west bank of a chiara Canyon from which a china brs S. 7. vs
- 11 Thence South on 11<sup>th</sup> Mile at 1900 $\frac{8}{10}$  vs a Mes post Marked W.L.S. 11. M. set in thick Mesquit brush
- 12 Thence South on 12<sup>th</sup> Mile at 1480 vs the Rayner and Jayton Road at 1900 $\frac{8}{10}$  vs a Mes post Marked W.L.S. 12. M
- 13 Thence South on 13<sup>th</sup> Mile at 1900 $\frac{8}{10}$  vs a Mes post set in Shinnery post marked W.L.S. 13. M from which east point of Double Mountain brs S 88 $\frac{1}{4}$ . E
- 14<sup>th</sup> Thence South on 14<sup>th</sup> Mile at 1900 $\frac{8}{10}$  vs a Mes post in Shinnery post Marked W.L.S. 14. M. the west point of Double Mountain brs S 33. E
- 15<sup>th</sup> Thence South on 15<sup>th</sup> Mile a Mes. post in Shinnery Marked W.L.S. 15. M on East side from which a large flat rock on north side of Double brs S 26. E
- 16<sup>th</sup> Thence South on 16. Mile at 1900 $\frac{8}{10}$  vs a Mes post Marked W.L.S. 16. M set in Shinnery from which the west point of Double Mountain brs S. 28 $\frac{1}{2}$ . E the East point brs S 37. E
- 17 Thence South on 17<sup>th</sup> Mile at 1900 $\frac{8}{10}$  vs a Mes post set in Shinnery Marked W.L.S. 17. M. from which the East point of Double Mountain brs S 41 $\frac{3}{4}$ . E
- 18 Thence South on 18<sup>th</sup> Mile at 870 vs the North bank of Salt fork of Brazos River Course 75 $\frac{1}{4}$  E, at 1120 vs South bank of River at 1900 $\frac{8}{10}$  vs a Mes post Marked W.L.S. 18. M. set in Valley
- 19 Thence South on 19 Mile at 1520 vs a deep canyon at 1900 $\frac{8}{10}$  vs a Mes post Marked W.L.S. 19. M. set on North slope of hill
- 20 Thence South on 20<sup>th</sup> Mile at 975 vs a post Marked W.L.S. C set on north side of Rayner & Clairmont road at 1900 $\frac{8}{10}$  vs a Mes post Marked W.L.S. 20. M. from which the west point of Double Mountain brs S 53 $\frac{1}{2}$ . E

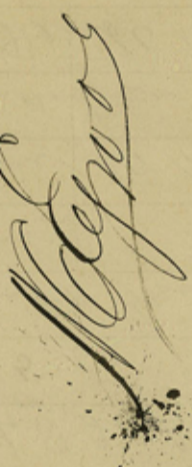
- 21 Thence South on 21<sup>st</sup> Mile at 480 vs Stinking Creek at 1900 $\frac{2}{10}$  vs a Mes post marked W.H.S., 21, M.
- 22 Thence South on 22 mile at 1256 vs South line of section No 415 BLK D, H.T.C.R.R.C. and 3140 vs E. of the S.W. Corner of BLK D and N.W. Cor of Section one W.C.R.R.C. at 1900 $\frac{2}{10}$  vs a Mes post set on west slope of hill marked W.H.S., 22, M
- 23<sup>rd</sup> Thence South on 23<sup>rd</sup> mile at 1256 vs south line of sec No 2 W.C.R.R.C. land at 1600 vs a road at 1900 $\frac{2}{10}$  vs a Mes post marked, W.H.S., 23, M from which the west end of Double Mountain is N 85 $\frac{1}{2}$  E.
- 24 Thence South on 24 mile at 1900 $\frac{2}{10}$  vs a Mes post marked W.H.S. 24, M.
- 25 Thence South on 25 mile at 1900 $\frac{2}{10}$  vs a Mes post marked W.H.S. 25 M set in South slope of hill from which west point of Double Mountain is N 60 $\frac{1}{2}$  E.
- 26<sup>th</sup> Thence South on 26 mile at 1900 $\frac{2}{10}$  vs a Mes post marked W.H.S. 26 M set on South Slope of hill in forks of two deep canyons
- 27 Thence South on 27 mile at 890 vs bed of creek at 1780 vs deep Canyon at 1900 $\frac{2}{10}$  vs a Mes post marked W.H.S. 27 M. from which west end of Double Mountain is N 40 $\frac{1}{2}$  E. point is N 48 $\frac{1}{2}$  E.
- 28 Thence South on 28<sup>th</sup> mile at 1900 $\frac{2}{10}$  vs a Mes post set on East slope of hill marked W.H.S., 28, M
- 29 Thence South on 29 mile at 750 vs a deep canyon at 1800 vs Canyon at 1900 $\frac{2}{10}$  a Mes post marked W.H.S. 29, M from which the west end of Double Mountain is N 30 $\frac{1}{2}$  E.
- 30 Thence South on 30 mile at 955 vs a point on line 100 vs East of 30<sup>th</sup> Mile post put up for S.E. corner of Kent County at 1900 $\frac{2}{10}$  vs a cedar post set in North line of Fisher Co and 633 $\frac{1}{2}$  vs East of the 21<sup>st</sup> Mile running west, on said line post is 4 feet high and 4 inches square marked S.W.C.S.C. on East side and S.E.C.K.C. on west side from which East point of Double Mountain is N 33 $\frac{1}{2}$  E West point is N 26 $\frac{1}{2}$  E a large hip rock is S 14 $\frac{1}{2}$  E.

The State of Texas  
 County of Stonewall  
 I, J. J. Hale County Surveyor in  
 and for said County do hereby  
 certify that the above and foregoing field notes  
 are correct and true as made by actual survey on  
 the ground beginning on the 2<sup>nd</sup> day of July 1895  
 and closing on the 6<sup>th</sup> day of July 1895 - with W. J.  
 Wester and Bland Carr as chain carriers and I further  
 certify that I had taken the oath and had given bond  
 and that said bond had been accepted and approved  
 as required by law and that the Court had given legal  
 notice to all the Commissioners Courts of the Counties  
 interested and that all the Mile posts are truly  
 described and all marks both natural and arti-  
 ficial are truly and correctly described  
 Given under my hand and official signature  
 on this the 10 day of July 1895

J. J. Hale  
 County Surveyor  
 Stonewall Co, Tex

Stonewall Co Bdry Line 3a

Field notes  
 of the  
 West line of Stonewall County

Filed in the Genl Land Office July 15.  
 1895  


In answer and reply for objections.  
 July 27/95  
 C. W. [unclear]

E. Smith & Co. New York

245	236	229	216
244	237	224	217
243	238	223	218
242	239	222	219
241	240	221	220
433	432	397	396
434	431	398	395
435	430	399	394
436	429	400	393
437	428	401	392
438	427	402	391
439	426	403	390
440	425	404	389
Raymond & Jayman Road			
442	423	406	387
443	422	407	386
444	421	408	385
445	420	409	384
446	419	410	383
447	418	411	382
448	417	412	381
449	416	413	380
450	415	414	379
S. L. B. K. D			
1	2	3	4
W. G. R. R. Co			

377	419	420
368	369	370
357	356	355
333	331	330
332	335	334
325	324	323
307	309	310
307	306	305

The State of Texas  
County of Stonewall

I, J. J. Hall County Surveyor in and for said County do hereby certify that the above and foregoing plat is a true and correct sketch of the West 1/2 of Stonewall County as established by me by a survey on the ground beginning on the 2nd day of July 1895 at the S. E. Corner of Duckens County and closing on N. 1/2 of Fisher County on the 6th day of July 1895 with W. J. Weston and Claud Carr as chain carriers  
Given under my hand and official signature  
this Aug the 17th 1895  
J. J. Hall  
County Surveyor Stonewall Co Tex

The State of Texas  
County of Stowall

J. J. Hale County  
Surveyor in and for said  
County do hereby certify  
that the above plot is a  
true and correct sketch  
of the west 1/2 of Stowall  
Co as located by me by a  
survey on the ground  
beginning at the S. E. cor<sup>r</sup>  
of Dickers County on the  
2<sup>nd</sup> day of July 1895 and  
Closing on the North line  
of Fisher County on the  
6<sup>th</sup> day of July 1895  
with W. J. Webster and  
Oland Carr as chain  
Carriers

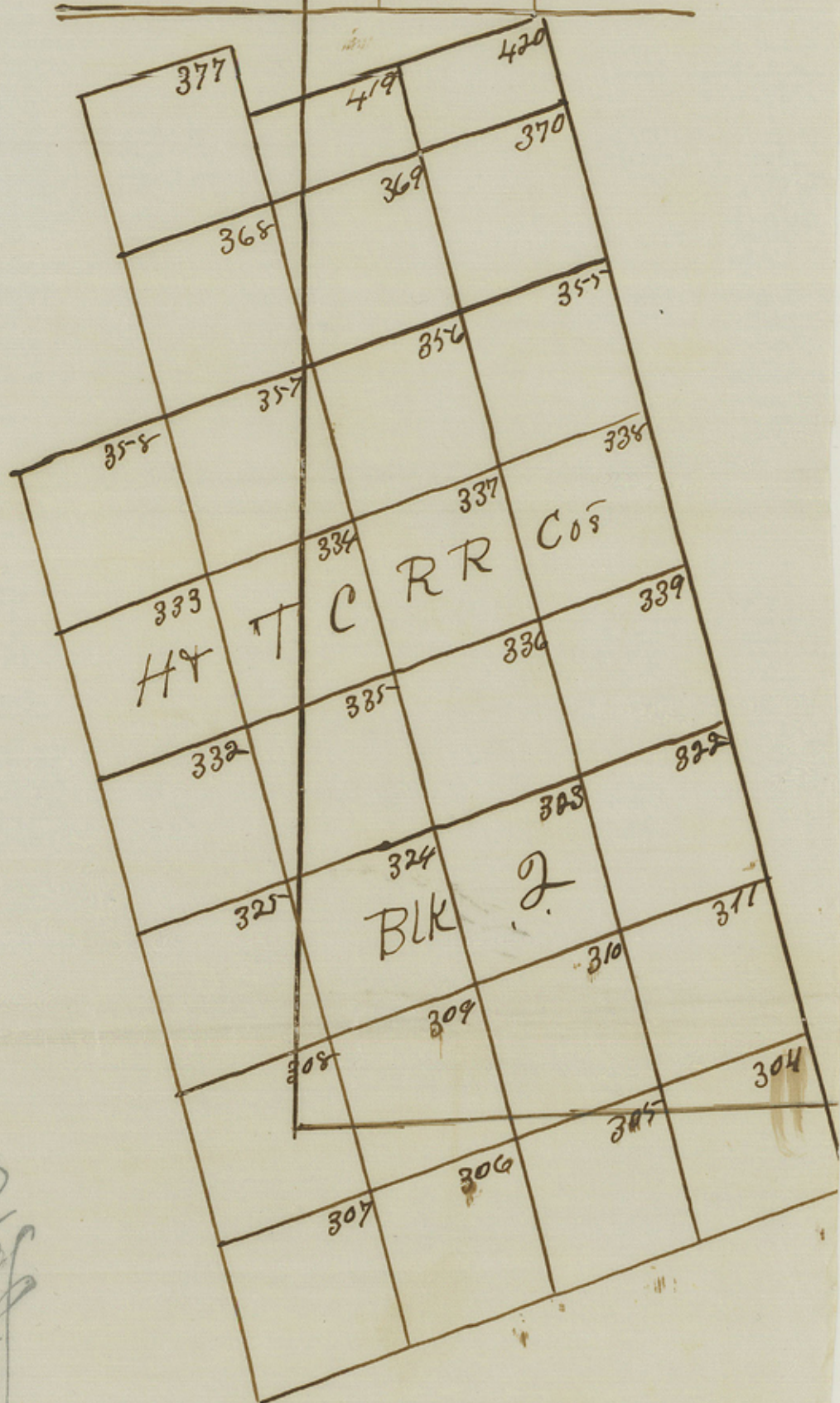
Given under my hand  
and official signature  
on this the 9<sup>th</sup> day of  
July 1895

J. J. Hale  
County Surveyor  
Stowall Co  
Texas

245	236	225	216
H. Y.	T. C	R. R	Co's
244	237	224	217
243	238	223	218
BLK		F	
242	239	222	219
241	240	221	220
433	432	397	396
434	431	398	395
435	430	399	394
H. Y.	T. C	R. R	Co's
436	429	400	393
437	428	401	392
BLK		D	
438	427	402	391
439	426	403	390
440	425	404	389
<del>441</del>	<del>424</del>	<del>405</del>	<del>388</del>
<i>Rayner &amp; Clairmont Road</i>			
442	423	406	387
443	422	407	386
444	421	408	385
445	420	409	384
446	419	410	383
<i>Salt Fork of Brazos River</i>			
447	418	411	382
448	417	412	381
449	416	413	380
<i>Rayner &amp; Clairmont Road</i>			
450	415	414	379
1	2	3	4

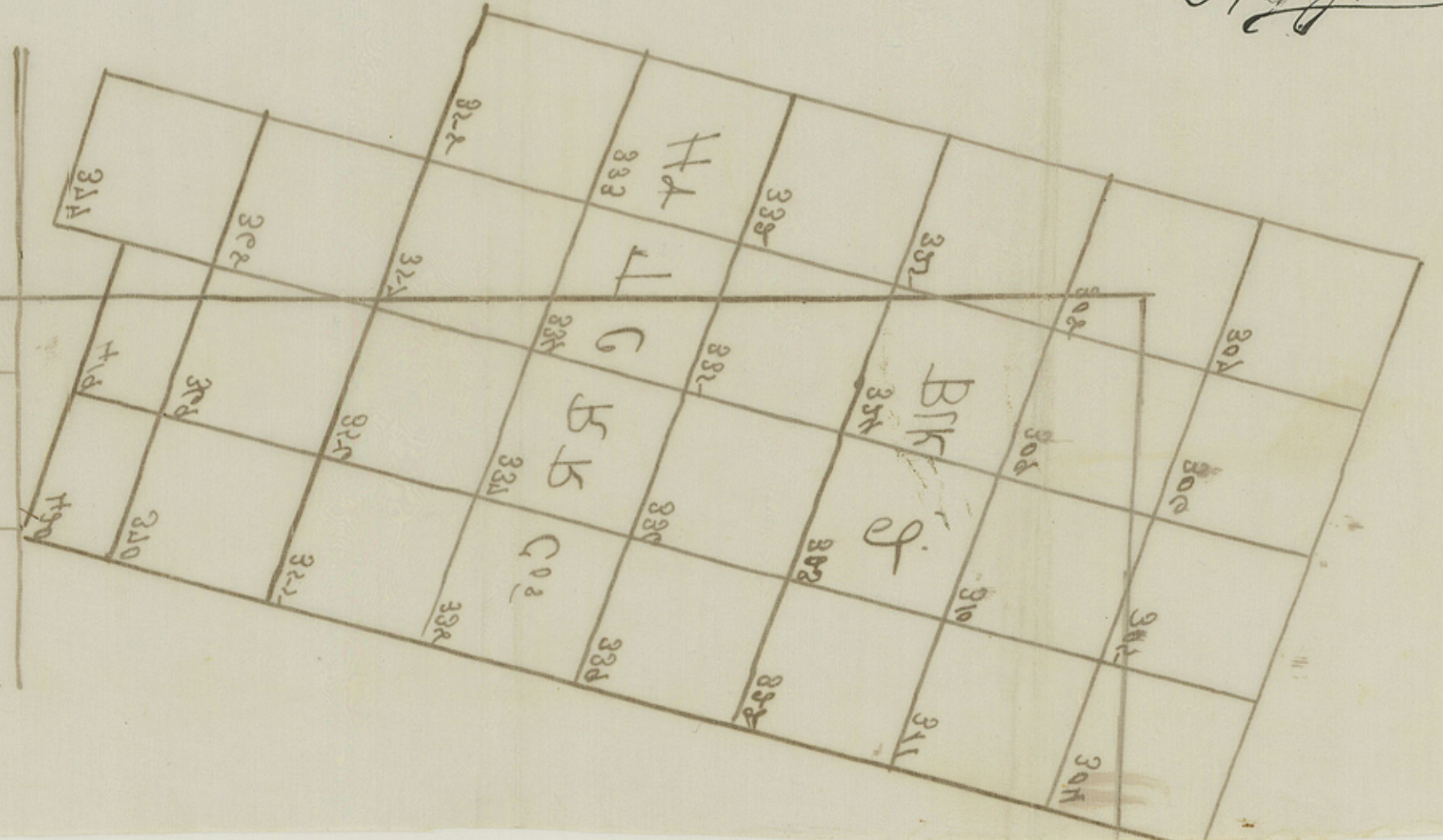
S. L. BLK I

S. L. BLK II



W. J. Webster  
Oland Carr  
Stowall Co  
Texas

Sketch  
of  
West boundary of  
Stonewall Co.  
filed July 15<sup>th</sup> 1895.  
McGrew



410	412	414	416	418	420	422	424	426	428	430	432	434	436	438	440	442	444	446	448	450	452	454	456	458	460	462	464	466	468	470	472	474	476	478	480	482	484	486	488	490	492	494	496	498	500	502	504	506	508	510	512	514	516	518	520	522	524	526	528	530	532	534	536	538	540	542	544	546	548	550	552	554	556	558	560	562	564	566	568	570	572	574	576	578	580	582	584	586	588	590	592	594	596	598	600	602	604	606	608	610	612	614	616	618	620	622	624	626	628	630	632	634	636	638	640	642	644	646	648	650	652	654	656	658	660	662	664	666	668	670	672	674	676	678	680	682	684	686	688	690	692	694	696	698	700	702	704	706	708	710	712	714	716	718	720	722	724	726	728	730	732	734	736	738	740	742	744	746	748	750	752	754	756	758	760	762	764	766	768	770	772	774	776	778	780	782	784	786	788	790	792	794	796	798	800	802	804	806	808	810	812	814	816	818	820	822	824	826	828	830	832	834	836	838	840	842	844	846	848	850	852	854	856	858	860	862	864	866	868	870	872	874	876	878	880	882	884	886	888	890	892	894	896	898	900	902	904	906	908	910	912	914	916	918	920	922	924	926	928	930	932	934	936	938	940	942	944	946	948	950	952	954	956	958	960	962	964	966	968	970	972	974	976	978	980	982	984	986	988	990	992	994	996	998	1000
-----	-----	-----	-----	-----	-----	-----	-----	-----	-----	-----	-----	-----	-----	-----	-----	-----	-----	-----	-----	-----	-----	-----	-----	-----	-----	-----	-----	-----	-----	-----	-----	-----	-----	-----	-----	-----	-----	-----	-----	-----	-----	-----	-----	-----	-----	-----	-----	-----	-----	-----	-----	-----	-----	-----	-----	-----	-----	-----	-----	-----	-----	-----	-----	-----	-----	-----	-----	-----	-----	-----	-----	-----	-----	-----	-----	-----	-----	-----	-----	-----	-----	-----	-----	-----	-----	-----	-----	-----	-----	-----	-----	-----	-----	-----	-----	-----	-----	-----	-----	-----	-----	-----	-----	-----	-----	-----	-----	-----	-----	-----	-----	-----	-----	-----	-----	-----	-----	-----	-----	-----	-----	-----	-----	-----	-----	-----	-----	-----	-----	-----	-----	-----	-----	-----	-----	-----	-----	-----	-----	-----	-----	-----	-----	-----	-----	-----	-----	-----	-----	-----	-----	-----	-----	-----	-----	-----	-----	-----	-----	-----	-----	-----	-----	-----	-----	-----	-----	-----	-----	-----	-----	-----	-----	-----	-----	-----	-----	-----	-----	-----	-----	-----	-----	-----	-----	-----	-----	-----	-----	-----	-----	-----	-----	-----	-----	-----	-----	-----	-----	-----	-----	-----	-----	-----	-----	-----	-----	-----	-----	-----	-----	-----	-----	-----	-----	-----	-----	-----	-----	-----	-----	-----	-----	-----	-----	-----	-----	-----	-----	-----	-----	-----	-----	-----	-----	-----	-----	-----	-----	-----	-----	-----	-----	-----	-----	-----	-----	-----	-----	-----	-----	-----	-----	-----	-----	-----	-----	-----	-----	-----	-----	-----	-----	-----	-----	-----	-----	-----	-----	-----	-----	-----	-----	-----	-----	-----	-----	-----	-----	-----	-----	-----	-----	-----	-----	-----	-----	-----	-----	-----	-----	-----	-----	-----	------

Stonewall Co  
June 1892  
one side of the  
one of the  
line across and  
across

one side of the  
one of the  
line across and  
across  
one side of the  
one of the  
line across and  
across

Stonewall Co  
Co Barly Line 3A  
7-9-1895