

Johnson Co. Bdry. line
Boundary Line
Between the Counties
of
Tarrant &
Johnson

Filed Dec 27th/92

Tarrant Co. (17) Line 20

Examined and ap-
proved

12/27/92 G. A. Beaumont

abstract Corrected

April 18/94

G. A. Beaumont

To the Hon.W.D.Harris,

Judge of the County Court of

Tarrant County, Texas:

In compliance with your order made on the 17th day of September A.D.1891, ordering me to survey, mark and define the south boundary line of Tarrant County, which is also a portion of the north line of Ellis and Johnson Counties, I proceeded to the south west corner of Dallas County and was on the ground at the time designated, to-wit: At two o'clock P.M. on the 17th day of November A.D.1891, and remained at said corner, waiting for the surveyors from the aforesaid Counties of Ellis and Johnson, until twelve o'clock noon on the 18th day of November A.D.1891.

The surveyor appointed by the County Court of Ellis County did not appear and no one else to represent Ellis County in the survey.

* One R.H.Adair, Surveyor appointed by the Commissioners' Court of Johnson County was on the ground at the time appointed for the beginning of said survey, I asked him if he could agree with me in a resurvey of the Original Line as run by A.G. Walker-he said he could not and thereupon showed me his instructions from the Court appointing him (a certified copy of which is herewith presented)

Finding that I could not have an agreement with any surveyor for either of the Counties interested I proceeded to run a random line west in search for the south line of Tarrant County, R.H. Adair, surveyor appointed by the Commissioners' Court of Johnson County was with me on the line until I reached the 5th mile, ^{at which point} ~~when~~ he left me ~~and~~ ^{having} entered a written protest at the 3rd mile, which is herewith presented, ^{and he refused to return or participate in any way in running the line as described here in,} I found no marks indicating a County Line until I reached the 10th mile where I found a line, pointed out by citizens as being the line run by A.G. Walker, which was some distance north of the course I was pursuing, I continued west to the west edge of the Lower Cross timber, which was between the 15th and 16th mile, I found that the old line as above mentioned was still north of me and was running ^{its general course} North 89° 11' west.

I then on the first day of December, 1891 procured from the General Land Office at Austin a certified copy of the field notes of the line as run by A.G. Walker, in the year A.D. 1855, which is presented with and made a part of this report, and I immediately returned to the south west corner of Dallas County as defined in report of myself for Tarrant County and J.M. Strong for Dallas County, *which corner is evidently on or very near the S. line of Tarrant County as run by Walker.*

Tarrant Co. Bdry. Line 2a

2

Said corner is described as follows, to-wit:
An 8 inch square Boisd'arc post marked on west
side S.E.C.-T.C. and S.W.C.-D.C. on east side, a
4 inch mesquite marked T.C.-X- N.68° W.11vs. and
a 4 inch mesquite marked D.C.-X-brs. N.20 1-2°-E.
36 vs. and a 14 inch mesquite standing in the
valley of a small branch and north of said branch
brs. N.73 1-2° E. 287 1-2 vs.

F I R S T M I L E:-

Thence north 89° 05' west at
268 vs. the east line of Wm. Childress survey 470
vs. north of its south east corner at ~~4770~~ 770 vs.
a branch course west at 885 vs. leaving said
branch course north at 1180 vs. crossed said
branch course south west and recrossing same at
1200 vs. course north west at 1240 vs. Mountain
Creek, course north ~~xxxxx~~ east, in all 1900.8 vs.
to the first mile post an 8 inch square Cypress
standing on a ridge in prairie and marked 1 on
east side T.C.L. on north and E.C.L. on south side
from said post the north west iron pier under
railroad bridge across Mountain Creek brs. south
12° west 231 vs.

S E C O N D M I L E:-

Thence north 89° 05' west at
295 vs. the west line of said Childress survey 375
vs. north of its south west corner and 168 vs. north
of where said survey line crosses the Fort Worth

Tarrant Co. Bdry. Line 2a

and New Orleans Railway and 15 vs. south of ~~xxx~~
the south east corner of the S.C. Neill survey in
all crossing said Railroad 1900.8 vs. to the 2nd
mile post and 8 inch square Cypress marked 2-
T.C.L. and E.C.L. said post is on the east bank of
a short drain that runs south 20 vs. unto another
drain, course east, and is also 10 1-2 vs. north of
the south line of the said Neill survey.

T H I R D M I L E :-

Thence North $89^{\circ} 05'$ west at ~~xxx~~
545 vs. the west line of said Neill survey 27 vs.
north 30° West from its south west corner also 666
vs. south 30° east from the north east corner of the
M. Gregg survey at... vs. passed about 20 vs. north
of John Sumpters residence at 1762 vs. the west
line of said Gregg survey 58 vs. south 30° east
from its north west corner at 1882 vs. the north
line of the L. Russell survey 106 vs. south 60° west
from its north east corner in all 1900.8 vs. to
the 3rd mile post an 8 inch square Cypress post
marked T.C.L.-3- on the north side said post is
standing in a high prairie farm.

F O U R T H M I L E :-

Thence ^{North} $89^{\circ} 05'$ west at 1526
vs. the west line of the S. Mitchell survey 301 vs.
south 30° east from its north west corner in all
1900.8 vs. to an 8 inch square Bois d'arc post
standing 8 vs. east of the east bank of an Artific-

Tarrant Co. Bdry. Line 2a

ial Pond in a small branch that runs north about 150 vs. into another branch, course east, said post is marked T.C.L. on north side.

5th Mile:-

Thence north $89^{\circ} 05'$ west at 1795 vs. crossed a branch, course north east in all 1900.8 vs. square Bois d'arc post marked T.C.L. 5 on north side ~~XXX~~ standing in hog wallow prairie from whence a 6 inch Bois d'arc post marked 5 standing in a south bend of said branch brs. south 146 1-2 vs December 3rd, 1891.

6th Mile:-

Thence north $89^{\circ} 05'$ west in all 1900.8 vs to an 8 inch square Bois d'arc post marked T.C.L. 6 on north side, said post is in a prairie farm that slopes to the south and 70 vs. north of a drain, course east.

7th Mile:-

Thence north $89^{\circ} 05'$ west 1900.8 vs. to an 8 inch Bois d'arc post marked T.C.L. 7 on north side and standing on north slope of a hill.

8th Mile:-

Thence North $89^{\circ} 08'$ west at 560 vs. the west line of the T.J. Hanks survey 593 vs. south 30° east from the south east corner of the J. Bridgman survey at 800 vs. timber at 1500 vs. large branch course west leaving same at 1590 vs. course north west at about 1640 vs. passed 3 vs. north of a Bee

Tarrant Co. Bdry. Line 2a

Tree at 1687 vs. the south line of J. Bridgman survey^{1053 vs from its S.W. corner} in all 1900.8 vs. to the 8th mile post an 8 inch square Bois d'arc marked T.C.L.8 on north side and standing in Walnut Creek Valley.

9th Mile:-

Thence north $89^{\circ} 08'$ west at 165 vs. Walnut Creek, course North east in all 1900.8 vs. to the 9th mile post an 8 inch square Bois d'arc standing in ground that slopes to the south about 53 vs. north of a small ravine, course east, whence a P.O. 12 inch brs. south 25° east 23 vs. bearing tree marked T cut in bark.

10th Mile:-

Thence north $89^{\circ} 11'$ west the Walker line plainly marked, as described in his field note, at 1452 vs. the west line of the S.S. Carpenter survey 182 vs. south 30° east from its north west corner in all 1900.8 vs. to the 10th mile post an 8 inch square Bois d'arc marked T.C.L.-10- on north side from which a 16 inch P.O. brs. south 58° west 2 1-2 vs. and a 12 inch P.O. brs. south 51° west 10 vs. each marked T in bark, said post is 179 vs. west of a branch that appears to run south but in reality runs north.

11th Mile:-

Thence north $89^{\circ} 08'$ west with old line, plainly marked, at 108 1-2 vs. crossed the east line of E. Gibbs survey 277 vs. north of its south

Tarrant Co. Bdry. Line 2a

east corner at 1082 vs. the west line of said Gibbs survey 298 vs. north of its south west corner at 1771 vs. passed the 11th mile post as set up by A.G. Walker a 24 inch (originally 20 inches when marked by Walker I cut off two inches of wood to find the mark) P.O. standing 10 vs. north of the line, said tree marked ~~XXXXXX~~ T.C.L.-XI-M cut in the wood, in all 1900.8 vs. to the 11th mile post an 8 inch square Bois d'arc standing in the north edge of a small glade prairie, said post is marked T.C.L.11 on north side a P.O. marked T brs. north 20° west 7 1-2 vs.

12th Mile:-

Thence north 89° 11' west at 186 varas the east line of the S. Johnson survey 498 varas north 30° west from its south east corner at 1045 varas the north line of said Johnson survey 142 varas north 60° east from its north west corner in all 1900.8 varas to 12th mile post an 8 inch square Bois d'arc in a farm about 130 varas north of a ~~xxxx~~ drain course east.

13th Mile:-

Thence north 89° 11' west with old line, at 365 vs. of William Nichols survey 565 varas north 30° west from its south west corner and 675 varas north 30° west from the south east corner of the W.R. Stout survey at 1180 varas the north line of said Stout survey 301 varas north 60° east from its north

Tarrant Co. Bdry. Line 29

line last cut at the W. line

7

west corner in all 1900.8 varas to the 13th mile post an 8 inch square Bois d'arc in deep sandy soil from said post a crooked top P.O. 8 inches brs. south 43° east 9 1-4 varas and an 8 inch P.O. brs. south 67° west 1 1-2 varas.

14th Mile:-

Thence north $89^{\circ} 08'$ west at 1860 varas a 12 inch P.O. stump on the west bank of a small branch, course north, at 1891 varas the east line of D. Poole survey 861 varas north of its south east corner, in all 1900.8 varas to 14th mile post an 8 inch square Bois d'arc marked T.C.L.14 on north side from which a 7 inch P.O. marked T. standing on west bank of small branch brs. east 38 varas.

15th Mile:-

Thence north $89^{\circ} 11'$ west with old line at 1090 varas Village Creek, course north east at 1750 varas said creek, course south east at 1845 varas said creek, course north east in all 1900.8 varas to the 15th mile post an 8 inch square Bois d'arc standing in the north bank of said creek, course east, said post is marked T.C.L.-15 on north side, from said post an 8 inch Chittum marked T brs. north $55^{\circ} 1-2'$ west 4 1-4 varas.

16th Mile:-

Thence north $89^{\circ} 11'$ west at 10 varas Village Creek, course nearly east, at 500 varas

Tarrant Co. Bdry Line 2a

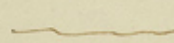
8

said creek, course north of east at 964 varas the Fort Worth and Alvirado road at 1477 varas the west line of A. Lee survey ⁽⁸⁾ 835 varas north of its south west corner at 1640 varas passed 6 varas south of a house on a small elevation, in all 1900.8 varas to the 16th mile post an 8 inch square Bois d'arc post marked T.C.L.-16 on north side of, said post ~~xxxxxxx~~ is 30 varas ~~xxxx~~ east of a small ravine, course south and 35 varas south of same ravine, course south west.

17th Mile:-

Thence north $89^{\circ}11'$ west at 1021 varas the M.K. and T.R.R. at 1569 varas the west line of Sarah Gray survey in all 1900.8 varas to the 17th mile post an 8 inch Bois d'arc on a mound in prairie farm.

18th Mile:-

North
Thence ^{North} $89^{\circ}11'$ west at 341 varas passed 3 varas north of a lone  14 inches P.O.

(no mark) at 400 varas the east edge of Brushy Mound at 1068 varas the north west line of H.G. Collett survey No. 8 and the south east line of H. Alsberry survey No. 4 at 1520 varas blazed a 5 inch P.O. on north east side, said place being the divide between two Brushy Mounds in all 1900.8 varas to the 18th mile post, an 8 inch square Bois d'arc on south side of a ridge, said post marked T.C.L.-18 on north side, from said

Tarrant Co. Bdry Line 2a

9

post a 5 inch P.O.brs.north 33° west 3 varas and
a 7 inch P.O.brs.south 68° east 8 varas, bearings
marked T.

December 7, 1891.

19th Mile:-

Thence north $89^{\circ} 11'$ west at 600 varas
the south west line of said Alsberry survey and
north east line of H.G.Collett survey survey No.6
at 788 varas a two foot post oak marked T.C.L.
at 812 varas a 30 inch P.O.brs.north 15 varas,
in all 1900.8 varas to the 19th mile post an 8
inch square Bois d'arc ~~standing~~ standing on the
west bank of a small ravine where it makes a short
turn from a west to north east course.

20th Mile:-

Thence north $89^{\circ} 11'$ west at 55 varas the
north west line of said Collett survey, 98 varas
north 45° east from the south east corner of J.W.
Gorbett survey at 95 varas the G., C. and S.F.R.R.,
course north 18° east at 855 varas the west line
of said Gorbett survey 84 varas north of its
south west corner at 1885 varas passed 45 varas
south of the south east corner of P.Caldwell sur-
vey, in all 1900.8 varas to the 20th mile post,
an 8 inch square Bois d'arc in ^{flat prairie} ~~flat~~ PRAIRIE

21st Mile:-

Thence north $89^{\circ} 11'$ west at 580 varas
a branch of Deer Creek at 1028 varas the north

Tarrant Co. Bdry. Line 2a

10

west line of H.G.Collett ~~xxxxxx~~ 320 acre survey
120 varas south 45° west from its north corner, in
all 1900.8 varas to 21st mile post, an 8 inch
square Bois d'arc on high prairie that slopes
to the south.

~~Was~~ December 8, 1891.

22nd Mile:-

Thence north $89^{\circ} 11'$ west at 297 varas
the west line of A.S.Yeung survey 280 varas south
of its north west corner and 342 varas south of
the north east corner of Joseph Boden survey at
1647 varas the west line of said Boden survey and
east line of Doggett survey, in all 1900.8 varas
to 22nd mile post, an 8 inch Bois d'arc in prairie
farm sloping to west.

23rd Mile:-

Thence north $89^{\circ} 11'$ west at 440 varas
branch-course north west at 937 varas small
branch, course north at 1109 varas the west line
of R.Daggett survey 335 varas south of its north
west corner and 86 varas south of the south east
corner of Socora Farming Co. survey in all 1900.8
to the 23rd mile post on the west slope of a
ridge, an 8 inch Bois d'arc marked T.C.L.-23 on
north side.

24th Mile:-

Thence north $89^{\circ} 11'$ west at 38 varas
the east line of S.B.Kirkham survey 142 varas

Tarrant Co. Bdry Line 2a

//

north of its south east corner and 55 varas south of the south west corner of said Socora Farming Co. survey at 85 varas passed three varas south of a well at ~~1250~~¹²⁵⁰ varas Rock Creek, course north, in all 1900.8 varas to the 24th mile post an 8 inch square Bois d'arc marked T.C.L.-24 on the north side, said post is about 30 varas south of a branch, course east and 12 varas south of a gravelly knoll.

25th Mile:-

Thence north $89^{\circ} 11'$ west at 705 varas the west line of W.N. Riddle survey 176 varas north of its south west corner and 334 varas north of the south east corner of R.L. Franklin survey, at 1676 varas the west line of said Franklin survey 340 varas north of its south west corner, in all 1900.8 varas to the 25th mile post an 8 inch square Bois d'arc on high prairie that slopes to the north east and in the east line of J.T. Gilleland survey 191 varas north of its south east corner.

26th Mile:-

Thence north $89^{\circ} 11'$ west at 1628 varas the west line of said Gilleland survey 216 varas north of its south east corner at 1683 varas drain, course north, in all 1900.8 varas to the 26th mile post, an 8 inch square Bois d'arc marked ~~XXXXXX~~ T.C.L.-26 and standing on north slope of hill

Tarrant Co. Bdry. Line 2a

12

about 60 varas east of a small drain that runs nearly east into another drain.

December 9, 1891.

27th Mile:-

Thence north $89^{\circ} 11'$ west at 1240 varas the east line of the John Hunter survey 85 varas south of its north east corner at 1320 varas Mustang Creek, course north east, in all 1900.8 varas to the 27th mile post, an 8 inch square Bois d'arc post, marked T.C.L.27 on the north side.

28th Mile:-

Thence north $89^{\circ} 11'$ west at 691 varas the west line of the John Hunter survey and the east line of the W.N. Hunter survey 61 varas south of its north west corner, in all 1900.8 varas to the 28th mile post, an 8 inch square Bois d'arc post marked T.C.L.-28, standing on high prairie land sloping to the east and 143 varas south of the Fort Worth and Rio Grande R.R.

29th Mile:-

Thence north $89^{\circ} 11'$ west at 440 varas passed 118 varas south of the south west corner of the A.J. Isaacs survey at 970 varas crossed the east line of the Johnson County School Land 50 varas south of the south west corner of the D. Morris survey, in all 1900.8 varas to the 29th mile post in a mound of stone on the east bank of a drain, course south east, opposite the mouth of a small drain from the west.

Tarrant Co. Bdry Line 2a

30th Mile:-
Thence north $89^{\circ}11'$ west 1900.8 varas to the 30th mile post, an 8 inch square Bois d'arc marked T.C.L.-30, standing in a prairie sloping to the west and 102 varas south of the Fort Worth and Rio Grande R.R., Thence $89^{\circ}11'$ west 168 varas to mound of stone about 60 varas east of a ravine where it appears to run north into Deer Creek and south into Mustang Creek, said mound of stone being at or near the south west corner of Tarrant County as set up by A.G.Walker in 1855 and is also 35 varas south of a flat stone lying on ground marked "1881" T-P., supposed to be stone placed by Finley and Ransom in 1881 for the south west corner of Tarrant County.

The above and foregoing is my report regarding the survey made by me in establishing the south boundary line of Tarrant County, which I did by retracing as nearly as could be ascertained the line as run by A.G.Walker in 1855, where the line was marked I did not disturb it, only marking the young timber with three hacks for side line and two hacks and a blaze for line trees.

I found the old line through the timber wherever there were old trees standing on the line. I found the line marks on trees where it crossed Mustang Creek at which point the line so marked was three varas north of my line.

Tarrant Co. Bdry Line. 2a

The course of the line is not exactly straight but varying ~~but~~ very little from a general course ~~xxxxxx~~ of north 89° 11' west, the same as that of the Orr line between Dallas and Collin Counties, which I have also traced.

The posts set up by me were each eight inches square and of material described in the foregoing field notes, five feet long and set three feet in the ground. All bearings ^{made} ~~xxxxxx~~ by me were cut in the bark of the trees, ~~while~~ those I found as made by Walker were cut in the wood.

I, J. J. Goodfellow, Special surveyor for Tarrant County, appointed to survey and define the south boundary line of Tarrant County do hereby certify that the above and foregoing is a true and correct statement of my acts in regard to the establishing of the said south boundary line of Tarrant County, and that the foregoing field notes with objects both natural and artificial as called for in same are true and correct.

Given under my hand, this the 28th day of December A.D. 1891.

J. J. Goodfellow

Special Surveyor for Tarrant County. *W. H. Aclair*
R. H. Aclair Special Surveyor for Johnson County Texas

Tarrant Co. Bdry Line 2a

Tarrant County) : ()
 No. 4598. vs.) : () Wednesday Dec 21st 1892.
 Johnson & Ellis) : ()
 Counties.) : ()

This matter this day coming before the Court for consideration upon the Report filed herein December 21st 1892 by J.J. Goodfellow, heretofore on to-wit: the 17th day of September A.D. 1892 appointed by this Court, Special Surveyor.

And it appearing to the Court that said Report is concurred in by R.H. Adair, Special Surveyor for Johnson County, Texas. And it further appearing to the Court that the County Court of Ellis County, Texas was duly notified that such a survey would be made, and of the time and the place of the beginning thereof, and that said Ellis County failed to have a representative in such survey, and said Report having been examined by the Court and in all things found correct. It is ordered by the Court that said Report be approved and recorded in the Deed Records of Tarrant County, Texas.

This 21st day of December A.D. 1892.

Robt G. Johnson,
 County Judge.

Tarrant Co. Bdry Line 2a

The State of Texas } : {
County of Tarrant } : {

I, John P. King, Clerk of the
County Court in and for Tarrant County Texas do
hereby certify that the above and foregoing is a
true and correct copy of the Original Order of
Court in Cause No. 4398 Tarrant County vs Johnson
and Ellis Counties.

Given under my hand and seal of
said Court at office in the
City of Fort Worth, Texas this
the 24th day of December A.D.
1892.

L.S.

John P. King
Clerk County Court Tarrant County Texas.

Tarrant Co. Bdry Line 2a

Filed for Record Dec, 21st 1892 at 5 O'Clock P.M.

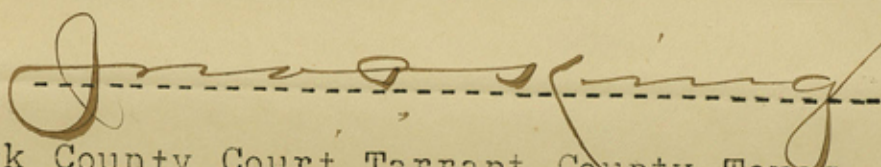
Recorded Dec, 24th 1892 at 10;25 O'Clock A.M.

Jno. P. King Co, Clerk.

By, W. E. Butler, D. C.

The State of Texas) ()
County of Tarrant,) () (I, John. P. King Clerk of ,
the County Court in and for Tarrant County Texas
do hereby certify that the above and foregoing is
a true and correct copy of the original Report,
made by J. J. Goodfellow, Special Surveyor for Tar-
rant County and R. H. Adair as Special Surveyor for
Johnson County in defining the line between,
Tarrant, and Ellis and Johnson Counties together
with the Supplemental Report as made by them, and
also the order of the County Judge of Tarrant,
County approving said Report,.

Witness my hand and seal of said
Court at my office in the City of
Fort Worth Texas on this the 24th,
day of December A, D. 1892.


Clerk County Court Tarrant County Texas.

Tarrant Co. Bdry Line 2a

Whereas since said suspension Ellis County did make an order, and had the line between Ellis and Dallas and Ellis and Tarrant Counties run, and the north west corner of Ellis County established upon the south line of Tarrant County as run by J.J. Goodfellow and defined in his report hereto attached.

We therefore ~~adopt~~ adopt the line as run and defined in the report, to which this supplemental report is attached and made a part.

Given under our hands, this the 27th day of September A.D. 1892.

J. J. Goodfellow
.....
Special Surveyor for Tarrant County.

Richard N. Adair
.....
Special Surveyor for Johnson County.

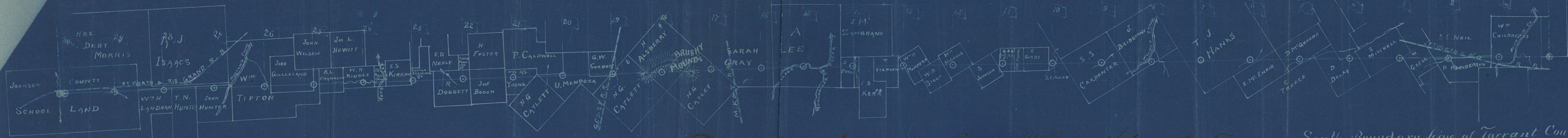
After a full investigation of the position of the south west corner of Dallas County, I am of the opinion that it, as now held, occupies as to north & south, very nearly the original position, and that the statute providing for the final resurvey of Dallas County has been fully complied with and that said corner was found to be "incorrect", but located fully as shown by the report of Mr. Ferris original locator of Dallas County.

Also that the said corner was found south of where a true location would place it but that said correction can not now be made and that said corner should stand in all future controversies as the true south west corner of same.

Tarrant Co. Bdry Line 2a

R. H. Adair *Stacy J. Cooper*

Tarrant Co. Bdry Line 2a



True northern boundary line of Tarrant County, Texas
 as resurveyed Nov. & Dec. 1891 and as reviewed June & July
 1892 based upon a final survey of Dallas Co. Tex. by
 surveyors John & Bernard with both being present and
 agreeing Dec. 5, 1892.
 Special Surveyor Johnson, Tex.

South Boundary line of Tarrant County
 as resurveyed Nov. & Dec. 1891
 J. Goodfellow
 Special Surveyor
 Tarrant County

Scale 2000 yards to Line