



GENERAL LAND OFFICE
AUSTIN, TEXAS

JERRY SADLER
COMMISSIONER

July 21, 1965

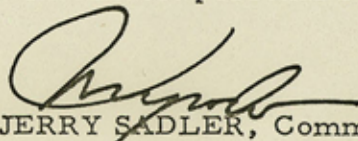
Judge Marvin B. Simpson
County Judge
Tarrant County
Fort Worth, Texas

Dear Judge Simpson:

Our office has completed the investigation and survey work on the ground of the county line between Parker and Tarrant Counties in accordance with your request. I am enclosing a copy of the proposed field notes and plat setting out in detail a description of this line along with a map.

I ask that the Commissioner's Court approve this line in accordance with your previous letter and forward the resolution to this office to be filed in our records along with the description that we have prepared. This will settle this long disputed location of the county line between your County of Tarrant and Parker County.

With kindest personal regards,


JERRY SADLER, Commissioner

JS:JG

Encl.

XERO
COPY

XERO
COPY

Tarrant Co. Bdry. Line 3

XERO
COPY

XERO
COPY

Pg. 1 of 14

Description of Relocation of the County Line
between Tarrant and Parker Counties

Beginning at a point 38.2 varas West of a concrete post with an underground mark consisting of a brass plug set in concrete under the post, which was set by R. G. Brown in 1964 for the Southwest corner of Tarrant County and the Southeast corner of Parker County.

Thence N. 1 degree 06.25 minutes E. at 128.0 varas pass 38.0 varas West of a 5/8th inch reinforcing bar in center of a county road, (T.C. Road No. 1042), at 139.7 varas pass 37.98 varas West of a 4 inch square concrete post set in the North fence line of said road; at 942 varas pass 36.7 varas West of a 5/8th inch reinforcing bar with aluminum plug set in fence line on the South line of the J. L. Goforth Survey, said plug being 354.6 varas West of its Southeast corner; at 1900.8 varas pass 35.1 varas West of concrete post set for Mile Post No. 1 by R. G. Brown, said post being 335.88 varas West of the East boundary line of the Goforth Survey.

Thence continue N. 1 degree 6 minutes 25 seconds E. at 3801.6 varas pass 32 varas West of Mile Post No. 2, a concrete post set in cultivated field by R. G. Brown, 189.6 varas East of the fence on West line of the M. Bonner Survey.

Thence continue N. 1 degree 06 minutes 25 seconds E. at 5702.4 varas pass 29.0 varas West of Mile Post No. 3, a concrete post set in pasture 151.2 varas West of the East line of the G. H. Tarpley Survey by R. G. Brown.

Thence continue N. 1 degree 06 minutes 25 seconds E. at 7603.2 varas pass 26.0 varas West of Mile Post No. 4, a concrete post set in pasture by R. G. Brown.

Thence continue N. 1 degree 06 minutes 25 seconds E. at 9504.0 varas pass 22.95 varas West of Mile Post No. 5, a concrete post set in a wooded pasture on East side of a small draw as set by Brown.

Thence continue N. 1 degree 06 minutes 25 seconds E. at 11,404.8 varas pass 19.9 varas West of Mile Post No. 6, a concrete post set in edge of cultivated field on West side of a small draw.

Thence continue N. 1 degree 06 minutes 25 seconds E. at 13,305.6 varas pass 16.86 varas West of Mile Post No. 7, a concrete post set on high rocky ridge, at 15,206.4 varas pass 13.81 varas West of Mile Post No. 8, a concrete post set in level pasture land, 295.9 varas North of fence on South line of the William Robinson Survey, and at 17,107.2 varas pass 10.76 varas West of Mile Post No. 9, a concrete post set in pasture 614.1 varas N. 1 degree 00 minutes 54 seconds E. from center line of main track of the Texas and Pacific Railroad.

Thence continue N. 1 degree 06 minutes 25 seconds E. at 19,008.0 varas pass 7.71 varas West of Mile Post No. 10, a concrete monument set in a pasture, and at 20,908.8 varas pass 4.65 varas West of Mile Post No. 11, a concrete post set in a pasture, and at 22,809.6 varas pass 1.6 varas West of Mile Post No. 12, a concrete post on East bank of a ravine on North side of a pile of rocks forming a retard dam in the ravine, and at 23,809.6 varas, a clump of Live Oaks, (5 trees 15 inches to 18 inches and 6 trees 8 inches to 10 inches) in an area about 25 feet in diameter and being the same clump of trees called for on Walkers line. The coordinates for this point being X = 1,985,047.3 and Y = 389,403.8.

Thence N. 1 degree 01 minutes 37 seconds E. at 24,710.4 varas pass 0.19 varas East of Mile Post No. 13, a concrete post set on the East side of a draw in a pasture; at 26,611.2 varas pass 0.58 varas East of Mile Post No. 14, a concrete post set in pasture; at 28,512.0 varas pass 0.98 varas East of Mile Post No. 15, a concrete monument set on Northeast slope of a hill in a pasture; at 30,412.8 varas pass 1.38 varas East of Mile Post No. 16, a concrete post set on rocky north slope in a wooded pasture; at 32,313.6 varas pass 1.77 varas East of Mile Post No. 17, a concrete post set on rocky north slope of a wooded pasture; at 34,214.4 varas pass 2.17 varas East of Mile Post No. 18, a concrete post set in a sandy field; at 36,115.2 varas pass 2.57 varas East of Mile Post No. 19, a concrete post set in wooded pasture; at 38,016.0 varas pass 2.96 varas East of Mile Post No. 20, a concrete post; at 39,916.8 varas pass 3.36 varas East of Mile Post No. 21, a concrete post set in cultivated field on north slope; at 41,840.6 varas pass 3.76 varas East of Mile Post No. 22, a concrete post set in East and West fence;

XERO COPY

XERO COPY

Tarrant Co. Bdry. Line 3

XERO COPY

XERO COPY

Pg. 2 of 14

B²

cont. 59137

XERO COPY

XERO COPY

XERO COPY

XERO COPY

Thence continue N. 1° 01' 37" E at 43,583.6 varas pass 4.12 varas East of a concrete monument set flush at intersection of North Boundary line of Stewart Street and Silver Cree-Azle road, at 43,616.0 varas pass 18.5 varas East of Porch on the Ash Creek Baptist Church building, and at 43,718.4 varas pass 4.15 varas East of Mile Post No. 23, a concrete Post in edge of woods 27.0 varas West of a house.

Thence continue N. 1° 01' 37" E. at 44,233.0 varas North line of Azle Feed Store building 14.2 varas from Northwest corner of building and 53.0 feet or 19. varas from Southwest corner of building, at 44,325.1 varas pass 4.28 varas East of Iron pin in centerline of Old State Highway 199, at 44,330.0 varas pass 13.1 varas West of Kilroys Liquor Store (burned down) at 44,400.0 varas pass through Cabin No. 5 of Redwood Motel at 44,451.2 varas pass 4.30 varas East of 5/8 reinforcement rod in Centerline of Locust Street (formerly Wayne Street), at 44,696.4 varas pass 4.36 varas East of concrete monument on South side of Rae Street 44,858.6 varas pass 4.39 varas East of concrete monument set 5 feet South of curb on Industrial Avenue, at, 44,913.4 varas South Wall of Buddies Supermarket 126.8 feet West of Southeast corner of building and 12.2 feet or 4.4 varas East of cut on wall as made by R. G. Brown marked T. C. and P. C. on wall, at 45,501.5 varas 183.3 feet West of Package Store on Access road, at 45,155.5 varas pass 4.45 varas East of a 5/8" reinforcing bar in center of State Highway No. 199, at 45,291.9 varas South wall of Azle Bowl building 27.3 feet East of Southwest corner of building and 38.1 feet West of Southeast corner of building, building is 144.0 feet long north and South, at 45,619.2 varas pass 4.55 varas East of Mile Post 24, a concrete Monument in back lot of resident in Azle 24.1 varas East of a North South fence and 17.3 varas South of East-West fence.

Thence continue N. 1° 01' 37" E 45,858.9 varas pass 4.60 varas East 4" Square concrete Monument set in on East-West fence, 210.45 varas West of Centerline of State Highway No. 730 said co-ordinates at concrete monument are X=1,986,132.0 and Y=450.619.1 at 46,845.3 varas pass 4.79 varas East of 5/8" reinforcement bar in center line of public road 175.9 varas West of Centerline of State F.M. Highway 730, at 46,854.3 varas pass 4.80 varas East of 4" Square concrete post in North fence line of road, and at 47,520.0 varas pass 4.95 varas East of Mile Post No. 25, a concrete Post set in back lot of resident, said line being 164.8 varas West of West Boundary line of State F. M. Highway No. 730.

Thence continuing N.1° 01' 37" E at 49.059.1 varas pass 5.25 varas East of a 4" square concrete post set in South fence line of County Road (T. C. Road No. 4118) and at 49,384.8 varas pass 5.33 varas East of Mile Post 26, a concrete post set on West side of deep draw; at 49,807.4 varas pass 5.41 varas East of a 4" Square post set in South Right of Way fence of State F. M. Highway No. 1542, at 49,825.2 varas pass 5.42 varas East of a 5/8" reinforcing bar in center of State F.M. Highway No. 1542, 144.2 varas West of Center line of State F. M. Highway No. 730, at 51,321.6 varas pass 5.74 varas East of Mile Post No. 27, Concrete Post gone, at 52,082.6 varas pass 5.89 varas East of a 4" Square concrete post in South fence of a county Road, (T. C. Road No. 4038) said line being 87.3 varas West of West right of Way line of State F. M. Highway 730, and at 53,222.4 varas Mile Post 29, concrete monument gone, line being 6.13 varas East of line as surveyed by R. G. Brown.

Thence continuing N. 1° 01' 37" E 54,808.4 varas pass 6.45 varas East of 4" Square concrete post set on West of top of a steep rocky hill, and at 55,123.2 varas pass 6.53 varas East of Mile Post No. 29, a concrete post set in pasture, at 55,559.2 varas pass 6.62 varas East of a 5/8" reinforcing bar in centerline of paving of State F. M. Highway No. 2257.0, said bar being 31.68 varas west of West right of Way line of State F. M. Highway No. 730, at 57,462.6 varas set Nail in West Right of Way line of State F. M. Highway No. 730, said corner being 7.02 varas East of a 6" X 6" concrete post set by R. G. Brown for the Northwest corner of Tarrant County and North-east corner of Parker County.

James E. McCarty
 James E. McCarty
 Licensed State Land Surveyor
 Registered Public Surveyor

Employed by the General Land Office

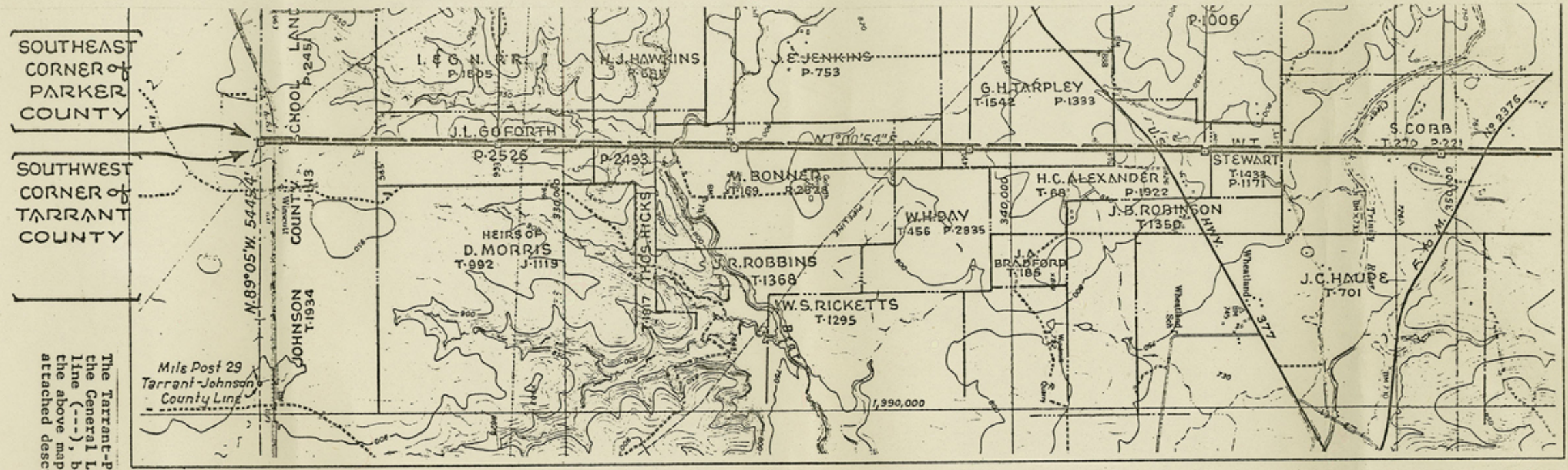
B³

counter 59138

Tarrant Co. Bdry. Line 3
 Pg. 3 of 14

cont'd 59139

XERO COPY

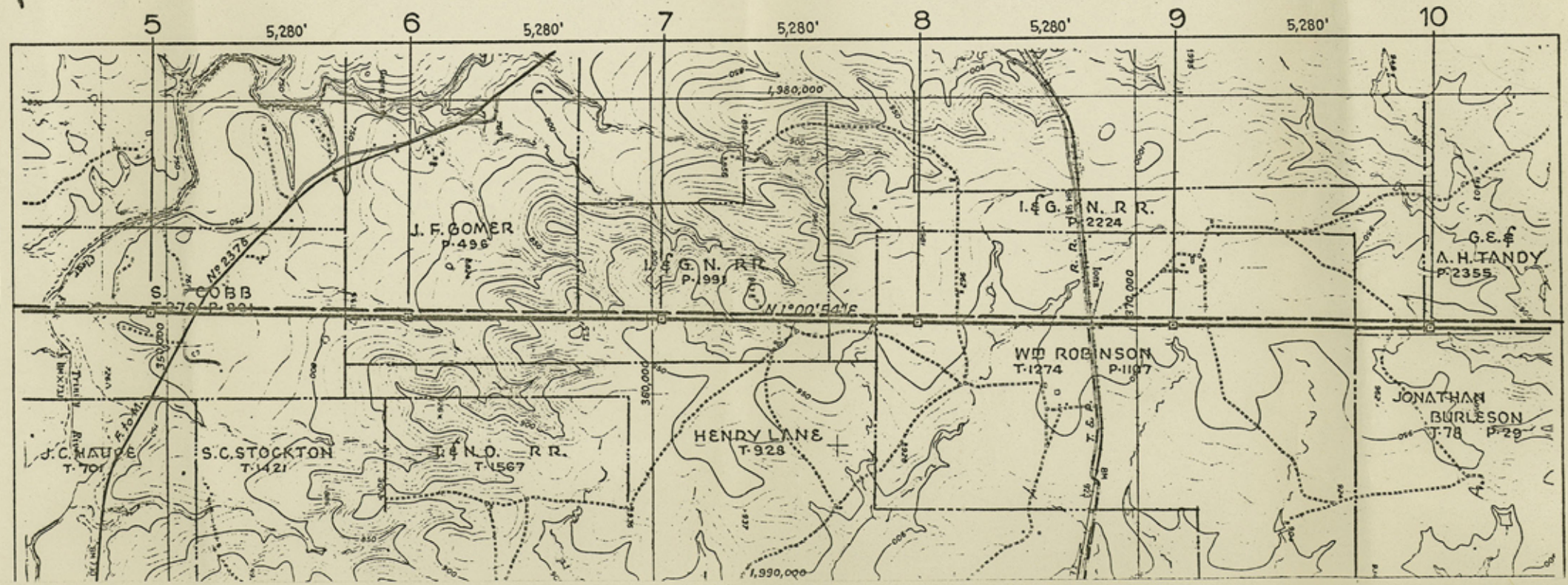
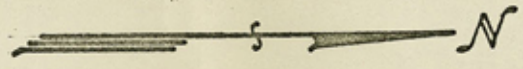


SOUTHEAST CORNER OF PARKER COUNTY

SOUTHWEST CORNER OF TARRANT COUNTY

Mile Post 29
Tarrant-Johnson
County Line

The Tarrant-Parker County Line as established by the General Land Office is depicted by a broken line (---), being west of the dark line shown on the above map and is more fully described by the attached description.



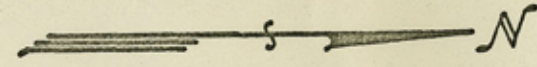
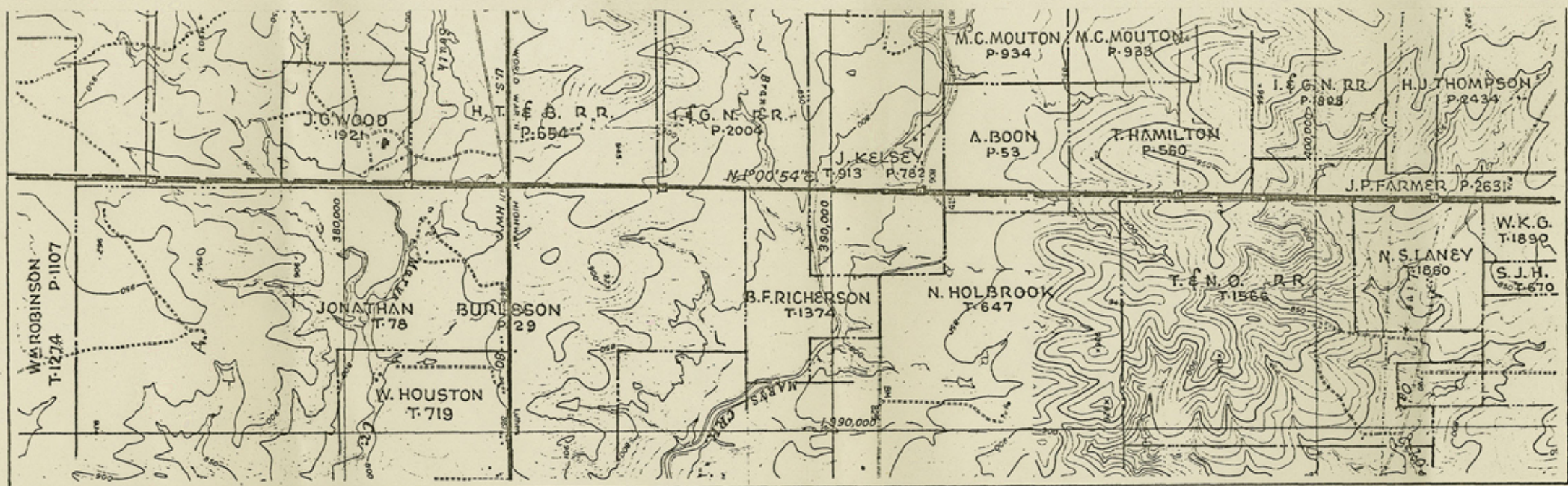
XERO COPY
Tarrant Co. Bdry Line 3
79-4 of 14

XERO COPY

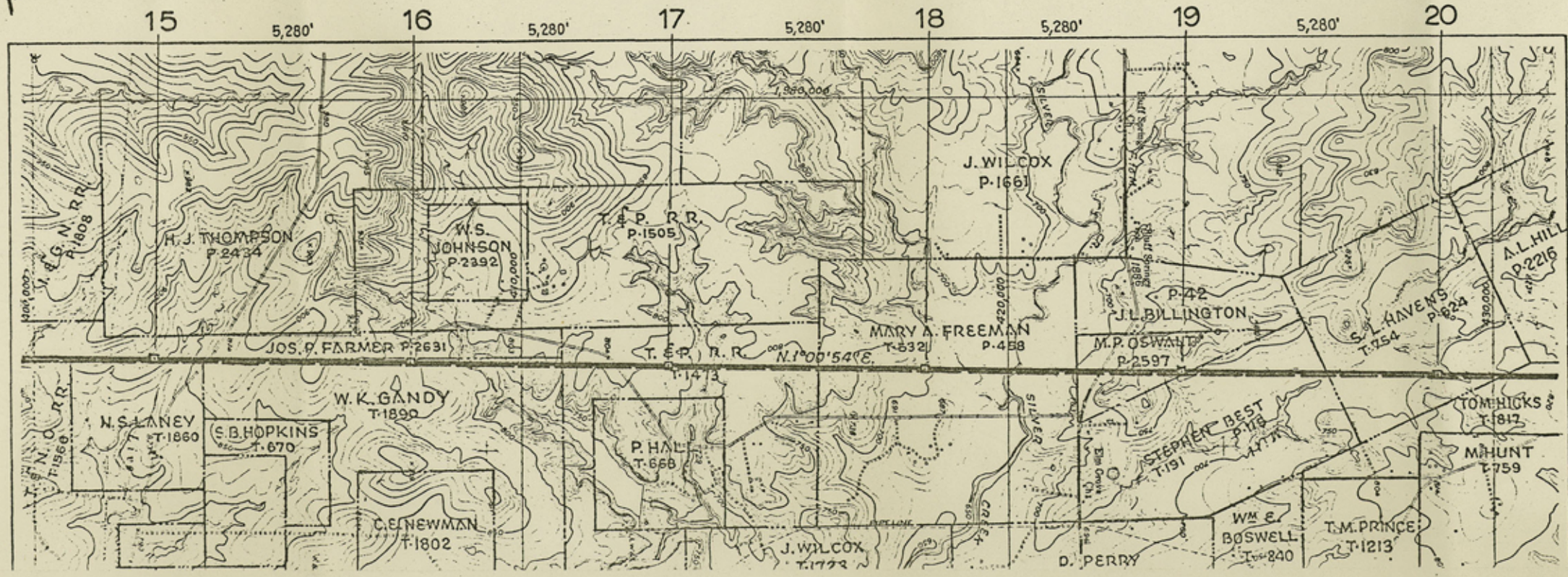
XERO COPY

Cont. 59140

XERO COPY



2



Tarrant Co. Bdy. Line 3 Pg. 5 of 14

XERO COPY

XERO COPY

87

Case 59141

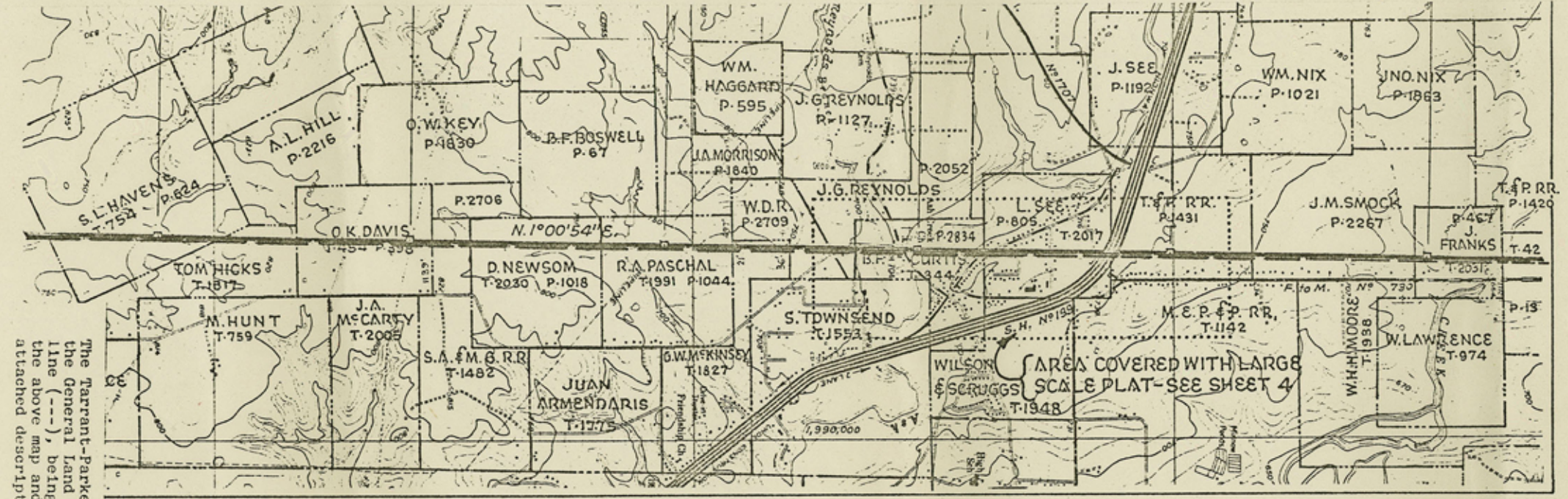
XERO COPY

XERO COPY

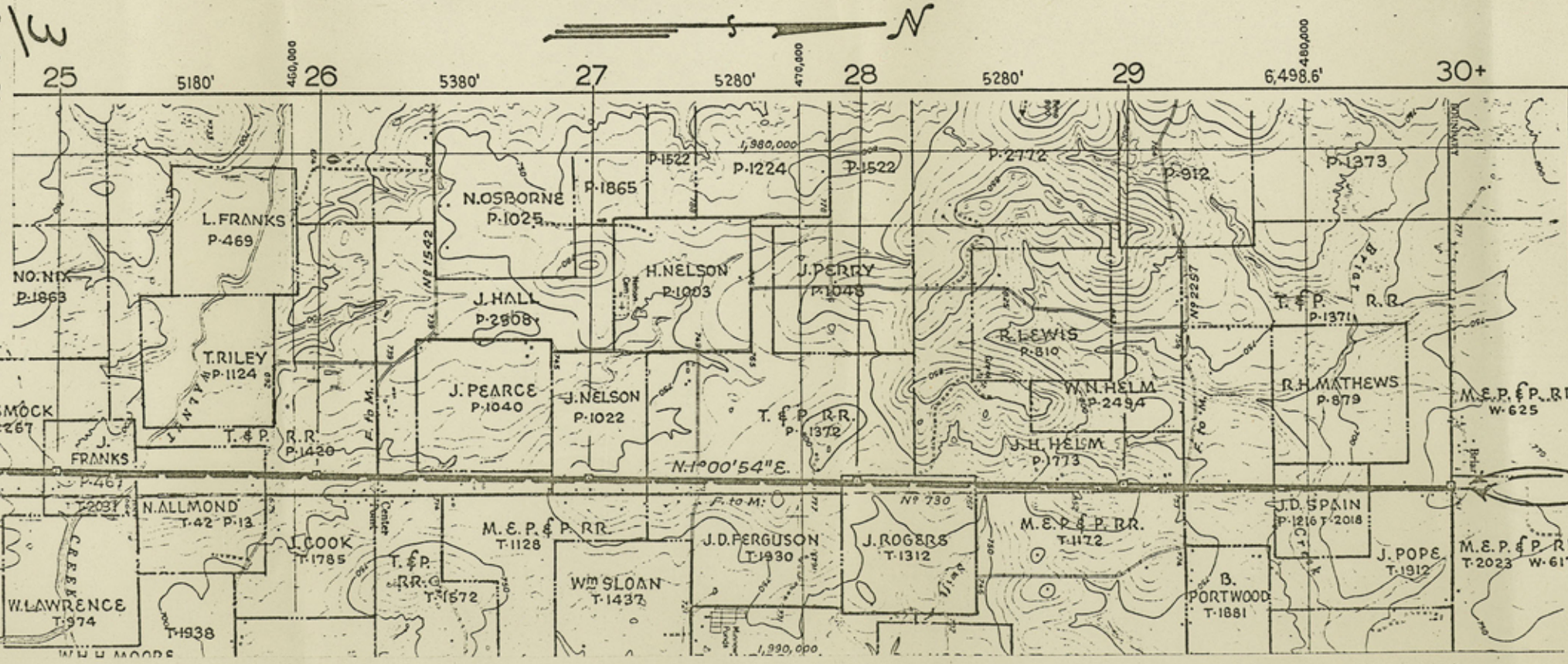
Tarrant Co. Bdy. Line 3 Pg. 6 of 14

XERO COPY

XERO COPY



The Tarrant-Parker County Line as established by the General Land Office is depicted by a broken line (---), being east of the dark line shown on the above map and is more fully described by attached description.



NORTHEAST
CORNER of
PARKER
COUNTY

NORTHWEST
CORNER of
TARRANT
COUNTY



\$SCRUGGS
 ~1948
 I-L-7 I-L-6 I-L-5
 I-L-3A
 I-L-2
 I-L-1

448,000
 2A 2A32A4
 GUESTVIEW
 2A2 2 1
 INWOOD RD.
 13
 ADD.
 12
 11

449,000

450,000

451,000

M.E.P. \$ P. R.R.
 T~1142

Flush Conc. Mon.
 M.P. 23+2716.6

Flush Conc. Mon.
 M.P. 23+3167.3'

Mark on Brick Wall
 M.P. 23+3347.1'

"T" on both curbs of Service Road

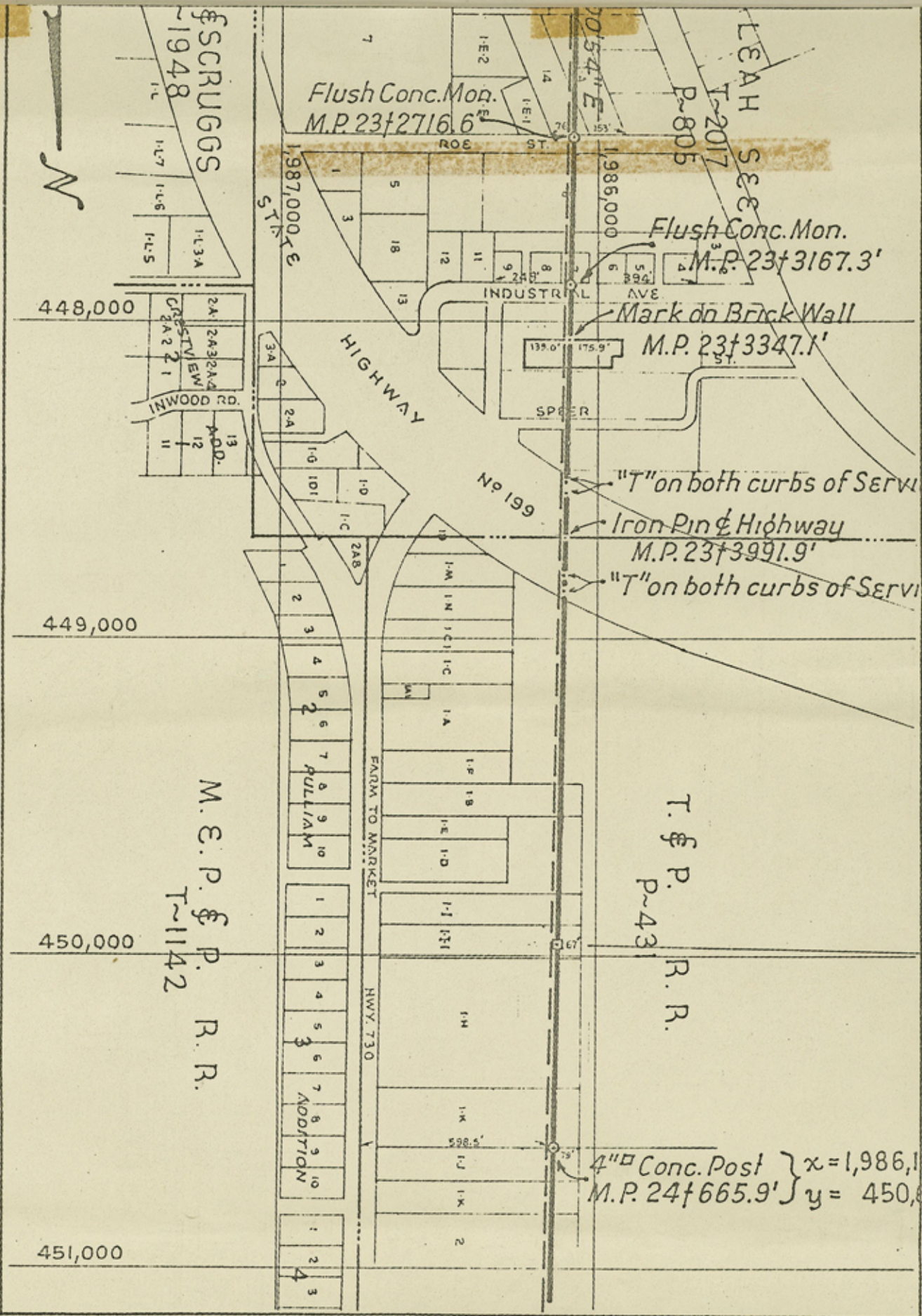
Iron Pin & Highway
 M.P. 23+3991.9'

"T" on both curbs of Service Road

T. & P.
 P~43
 R. R.

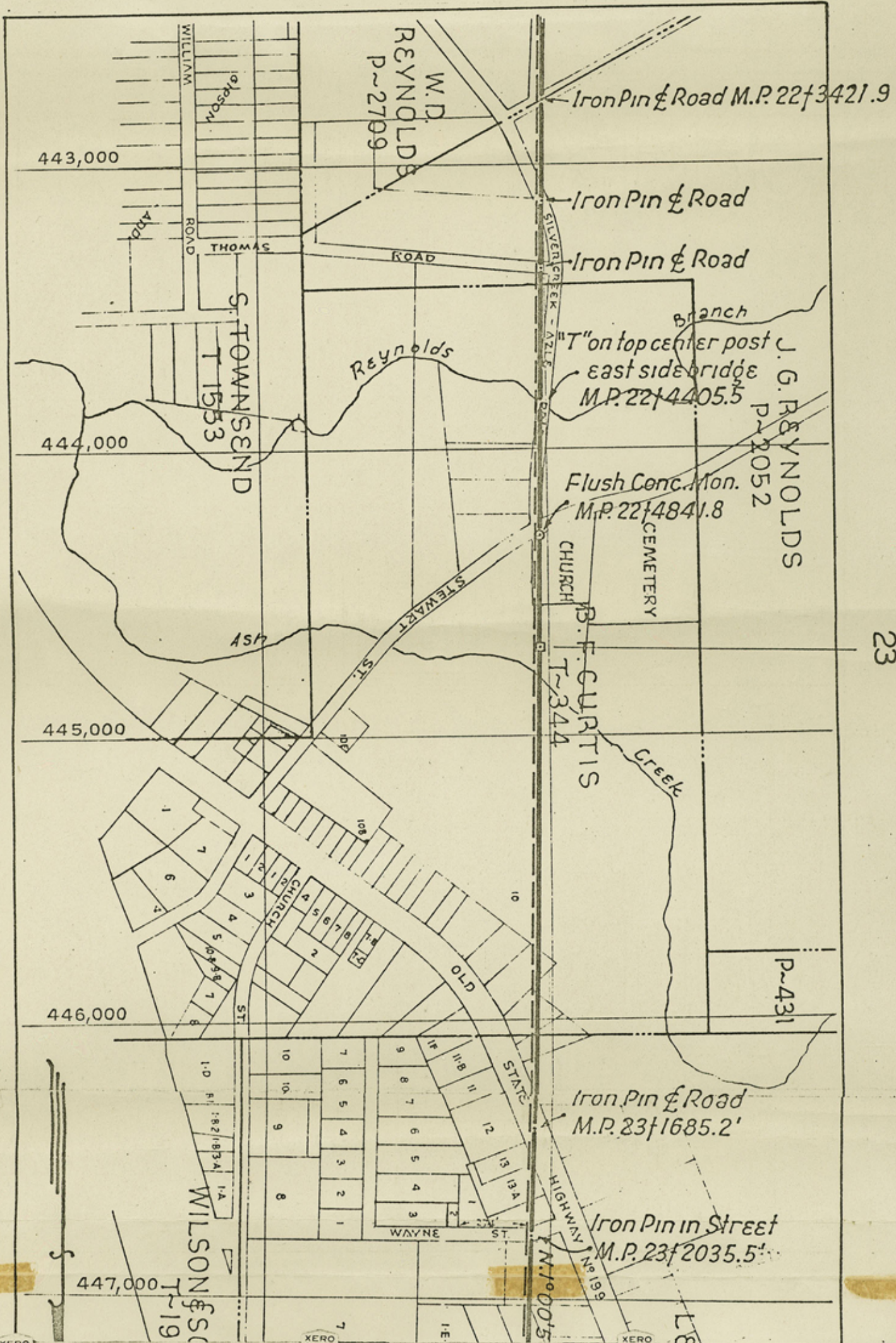
4" Conc. Post } x = 1,986,132.0
 M.P. 24+665.9' } y = 450,619.1

Tarrant Co. Bdry. Line 3
 B-7 of 14



counter 59142

The Tarrant-Parker County Line as established by the General Land Office is depicted by broken line (---), being east of the dark line shown on the City of Azle map and is more fully described by attached description.



23

59143

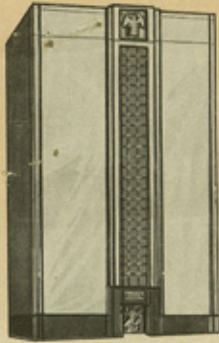
TARRANT COUNTY

FORT WORTH, TEXAS ✓

BRYAN HENDERSON (1)
C. H. (Punch) WRIGHT (2)

COMMISSIONERS
COURT

R. F. (Dick) LEWIS (3)
ROSCO MINTON (4)



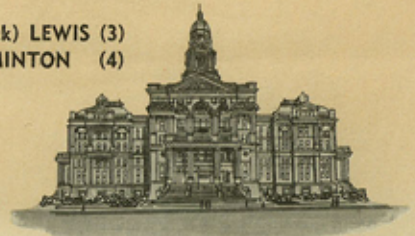
NEW CRIMINAL COURTS BUILDING



CIVIL COURTS BUILDING



CRIMINAL COURTS BUILDING



COURT HOUSE

MARVIN B. SIMPSON, JR.
COUNTY JUDGE

DEPARTMENT OF PUBLIC WORKS ✓

Aug. 11, 1965

STEVE CHAMPEAUX
DIRECTOR

R. L. BOURLAND, P.E.
ASST. DIRECTOR
(ENGINEERING)

①

Chief Clerk

Mr. Jerry Sadler
Commissioner General Land Office
Austin, Texas

RECEIVED

AUG 12 1965

General Land Office

Dear Sir:

In compliance with our request and your letter of July 21, 1965, we are enclosing a certified copy of the resolution accepting your recommendation of the West line of Tarrant County and the East line of Parker County.

Thank you very much for your valuable assistance in the settlement of differences.

Yours truly,

Steve Champeaux
Steve Champeaux
Director of Public Works

encl.

cc: Marvin B. Simpson, Jr.
County Judge

Tarrant Co Edry Line 3

RECEIVED

AUG 12 1965

General Land Office

NO. 36492

IN RE: TARRANT-PARKER COUNTY LINE

WHEREAS, heretofore in February, 1963, considerable confusion existed as to the location of the county boundary line as between Parker and Tarrant counties, and said counties, acting by and through their respective Commissioners Court, could not agree as to the true location of such common boundary line; whereupon Tarrant County selected and employed R. G. Brown, a licensed State Land Surveyor to survey out such boundary line. The County Court of Tarrant County notified the County Court of Parker County of such selection, and also of the time and place when and where such surveyor would begin his work of running out such common boundary line, and invited the Parker County Court to select a competent surveyor to work with the surveyor of Tarrant County in locating the correct boundary. Parker County did select a surveyor and he did work with the surveyor for Tarrant County, but after many months and much effort on the part of said surveyors for the respective counties, they were unable to agree as to the proper location of said boundary line. Whereupon the matter of disagreement was referred to the Honorable Jerry Sadler, Commissioner of the General Land Office of the State of Texas for his determination of the proper location of said boundary line, all as provided by Statute in such cases made and provided; and

WHEREAS, the Honorable Jerry Sadler, Commissioner of the General Land Office of the State of Texas, after receiving the workings of the two surveyors employed by the respective counties, and with the aid

Tarrant Co. Bdry. Line 3

XERO COPY

XERO COPY

Tarrant Co. Bdry. Line 3

XERO COPY

XERO COPY

XERO COPY XERO COPY XERO COPY XERO COPY

and assistance of James E. McCarty, a licensed State Land Surveyor employed by the General Land Office, proceeded to locate the common boundary line as between Tarrant and Parker counties, and did so locate such boundary line, and has so certified, and has furnished each of said counties a plat and field notes showing its location, said field notes being in words and figures as hereinafter set out, requesting the respective counties for approval, evidenced by a proper resolution of the Commissioners Court of each respective county, said field notes being in words and figures as follows:

Tarrant Co. Bdry. Line 3
Pg. 11 of 14

AND, WHEREAS, the Commissioners Court of Tarrant County, on this the 9th day of August, 1965, after full discussion and consideration of the premises, finds that the boundary line as fixed by the Commissioner of the General Land Office of the State of Texas, is fair, just and legal and same should be accepted, ratified and adopted as the true boundary line between Parker County and Tarrant County by the Commissioners Court of Tarrant County.

IT IS THEREFORE moved by Commissioner MINTON and seconded by Commissioner LEWIS that said survey and location of the true boundary line between Parker County and Tarrant County as made by the Commissioner of the General Land Office of the State of Texas, be accepted, ratified and adopted by the Commissioners Court of Tarrant County as the true and correct boundary between said counties, and that a copy of this resolution be forwarded to the General Land Office to become a part of the records of that office. Said motion upon a vote was unanimously adopted, and it is so ordered.

XERO COPY

XERO COPY

Tarrant Co. Bdry. Line 3

XERO COPY

XERO COPY

Pg. 12 of 14

B5 counter 59147

THE STATE OF TEXAS |
COUNTY OF TARRANT |

I, W. O. "RED" COWEN, Clerk of the County Court and Ex-Officio Clerk Commissioners' Court of Tarrant County, Texas, certify that the above and foregoing is a true and correct copy of Commissioners' Court Order No. 36492 "RESOLUTION ACCEPTING COUNTY LINE BETWEEN TARRANT AND PARKER COUNTIES AS RECOMMENDED BY JERRY SADLER, STATE OF TEXAS LAND COMMISSIONER."

as same appears on file and of Record in Minute Book 51, at Page 206, Commissioners' Court Records of said County.


WITNESS my hand and the Seal of said Court at my office in the City of Fort Worth, Texas, this the 9th day of August A. D. 1965.

(Seal)

W. O. "RED" COWEN, CLERK
COUNTY COURT AND EX-OFFICIO
CLERK COMMISSIONERS' COURT
TARRANT COUNTY, TEXAS

BY: Maurine Glover
~~XXXXXXXXXX~~, Deputy
Maurine Glover,

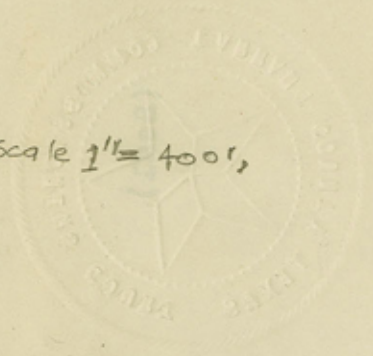
17

Tarrant Co Bdry  Line 3

Tarrant Co. Line.

See also Map K-7-58

(K-7-58 is R.G. Brown's plat, in 4 sheets, scale 1" = 400', of his work on Tarrant/Parker Line)



[Faint, mirrored text from the reverse side of the page, including 'THE STATE OF TEXAS' and 'COUNTY CLERK']

Walter D. Glover,
TARRANT COUNTY, TEXAS
COUNTY CLERK AND EX-OFFICIO
CLERK

Walter D. Glover,

Tarrant Co Bdry. Line #3
cont. 59149

August 12, 1965

Mr. Steve Champeaux
Director of Public Works
Tarrant County
Fort Worth, Texas

Dear Mr. Champeaux:

I received your letter dated August 11 in which you enclosed a resolution of acceptance of the boundary line between Tarrant and Parker Counties. I appreciate the fine cooperation we have had from officials of Tarrant County. It has been a pleasure working with all of you.

Sincerely yours,

JERRY SADLER, Commissioner

JS/jg

cc: Marvin B. Simpson, Jr.
County Judge