

RECEIVED

MAR 10 1965

General Land Office

Parker-Tarrant County Line Survey

I have made a study of the report submitted by Mr. Brown, also the maps of his line which was submitted with his report. I wish to state that several trips were made over the line by Mr. Brown and myself before Mr. Brown began his survey. We first met at the County line on Feb. 11, 1963. We were never able to pin down any portion of the line as to witness trees and other land marks except in a general way. We found some submerged tree stumps at the North line which we decided might be some of the witness trees described by A. G. Walker, who made the original survey in 1855. For want of anything better we used one of these stumps and set a stake for the Northwest corner of Tarrant County. I later found reference to a grant to the T & P RR in 1872. This grant described the County line as being located one mile East of the Northwest corner of the survey. In chaining East from this corner I found that the measured distance placed the corner about 70' East of the point as located from the tree stump and so notified Mr. Brown. Since Mr. Brown did not begin his survey until late summer I was instructed by the Parker County Court to run a preliminary line South from the Northwest corner of Tarrant County in an endeavor to find any points on the line which might be of help. I could find none and upon reaching a point South of US 80 it was decided that no further work would be done pending the start of the survey to be made by Mr. Brown. My line as projected was somewhat East of the line finally run and adopted by Mr. Brown as being the correct location of the County line.

I met Mr. Brown and his field party at the NW corner of Parker County late in the summer of 1963. We attempted to establish a line running South but due to weather conditions and equipment failure we were unable to accomplish much. It was decided to wait for more favorable weather. At a later date I had a call from Mr. Brown informing me that his party was working at a certain point on the line and for me to drive out there. I was unable to locate the field party. I later made several efforts to find out what was going on but with little success. Since I had been appointed by Parker County to work with Tarrant County I felt that I should have been consulted or at least advised by Mr. Brown as to the status of the survey. I had no further word, with the exception of a few phone calls from Mr. Brown, until he had finished his line, set Mile Posts and completed his report and Maps.

Mr. Brown ran a line from the above mentioned stake at the Northwest corner of the line to the group of live oaks described by Walker in his 1855 survey and then projected his line from there to the Southwest corner of Tarrant County. Mr. Walker began his survey at the Southwest corner of Tarrant County and ran North. Mr. Walker began at a point 60 varas East of a drain at the County line. This drain is there, very much in evidence and apparently used by Tarrant County in a previous survey. Mr. Brown's Mile Post is considerably East of the point described. Had Mr. Brown projected his line from South to North thru the same group of live oaks his line at the Northwest corner of Tarrant County would have been approximately 300' East of the County line Mile Post as now located.

I wish to call your attention to a reference made by Mr. Walker to a small creek near Center Point at MP 26. Mr. Walker stated that his line was 140' East of the Creek while Mr. Brown set a Mile Post approximately 50' West or a difference of 190'. Mr. Brown measured his distance from South to North as did Mr. Walker. At the group of live oaks at Mary's Creek, a distance of

Tarrant Co. Bdry. Line 5

over 12 miles, the distance measured by Walker and Brown is exactly the same. At the Northwest corner of Tarrant County Mr. Brown's measurement exceeds that of Mr. Walker by 887'. Mr. Murphy surveyed the County line one year later than Walker. He measured the line to be 630' shorter than Brown. This indicates that there is some question as to the reliability of the location of the witness tree which is the only tie we have to the County line and the point used by Mr. Brown in making his survey. As opposed to this point there is a well defined drain at the South end of the County which is visible for all to see and inspect.

I feel that had Mr. Brown and I worked a little more closely in conjunction with each other I could have offered the above objections at an earlier date and possibly made my report much sooner.

G. F. Mann, Prof. Engineer

RECEIVED

MAR 10 1965

General Land Office

BROWN and DAVIES

ENGINEERS

FORT WORTH 4 TEXAS

March 8, 1965

Honorable Judge Marvin Simpson
and County Commissioners of
Tarrant County, Texas
Court House
Fort Worth, Texas

Re: Tarrant-Parker County Line.

Gentlemen:

Attached hereto are three sets of Exhibit 'A', Report and Field Notes, and three sets of Exhibit 'B', Maps of the County Line, as prepared by me. Also included are three copies of the Report made by Mr. G. F. Mann, Special Surveyor for Parker County, that were given to me by Judge Gabe T. Vick of Parker County.

I wish to take this opportunity to clarify some of the statements in Mr. Mann's Report that appear to be in conflict with my findings. Mr. Mann's statement that the southwest corner of Tarrant County could be located 60 varas from a drain called for by Mr. Walker in his original field notes is not wholly substantiated in fact. Since Walker's original location, a railroad fill has been constructed about 300 ft. north of the southwest corner of Tarrant County with a culvert through the fill flowing north. This change in the natural drainage and the fact that I personally have knowledge that the area in which the corner lies has been in cultivation or used as a hog lot since 1924 causes me to place little weight to a location from a presently existing drain. Mr. Goodfellow had some doubts about the corner location in his survey of 1891 when he stated that the 'said mound of stone being at or near the southwest corner of Tarrant County as set by A. G. Walker in 1855--'. If the 80 vara difference on the south line between the Mustang Creek crossing calls of Walker and Goodfellow is carried on from Goodfellow's 29 Mile Post, the corner as now set would be 57 ft. too far east.

Mr. Mann takes exception to the location of the line as established at Mile Post 26 because of the side location of a small creek. Mr. Walker had his Mile Post 26 placed 1700 varas (4722 ft.) north of Walnut Creek while the present Mile Post 26 is set 3530 ft. north of Walnut Creek. From a point on the line 1700 varas north of Walnut Creek there is a small creek 350 ft. to the west (Walker calls for a

R. G. BROWN
JAS. B. DAVIES, JR.
PHONE ED-5-3154
1225 FAIRMOUNT AVE.

copy 59163

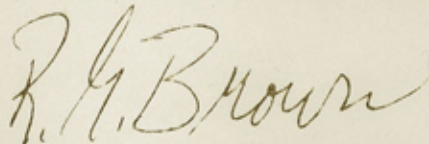
Tarrant Co. Bdry Line 5

Tarrant-Parker County line---March 8, 1965

creek about 51 varas west). I was aware of this relation at the time the line was run, but did not choose to give much weight to this call because the creek now runs through a flat, sandy bottom that has been filled with sand and silt washed down from the eroded hills in the vicinity. There is evidence of several old channel locations in this flat and it is possible that one of them could have been within the limits called for by Walker.

The Report, Field Notes and Maps submitted to you are the result of a complete and thorough investigation and survey of the Original County Line as run and established by A. G. Walker in 1855 and meets and fulfills the descriptions and calls as nearly as is possible.

Respectfully submitted,



R. G. Brown, Special Surveyor
For Tarrant County

Tarrant Co. Bdry. Line 5

RECEIVED

MAR 10 1965

EXHIBIT "A"

General Land Office

REPORT AND FIELD NOTES FOR COUNTY LINE
BETWEEN TARRANT AND PARKER COUNTIES, TEXAS

R. G. Brown, Special Surveyor for Tarrant County, and G. F. Mann, Special Surveyor for Parker County, met on the Tarrant-Parker County Line on Feb. 11, 1963 as set forth in Tarrant County Commissioners Court order No. 34314 to re-establish the line between Tarrant and Parker Counties.

Copies of the field notes of the west line of Tarrant County as run by A. G. Walker in 1855 and the east line of Parker County as run by Lewellen Murphy in 1856 were used as the basis for recovery of the line. Aerial photographs, recent (1961) and old (1942), as well as the 7.5 minute Series Topographic Maps (1955) of the U. S. Geological Survey were used as a base to plot and identify points and objects described or found.

A search was made for all objects described in the field notes. The greatest interest was taken in descriptions that were on line or had side ties and the crossings were used for location along the line. Tree calls were of little value because of the long lapse of time, 108 years, and because of the loss of many trees in the area as the result of a seven year drouth that lasted from 1950 through 1957.

The first located description with a side call going north from the southwest corner of Tarrant County was for Walker's call for a house at Mile Post 3 plus 600 varas, the southwest corner of the house being 26 varas east of the line. The only evidence of such a house was broken glass and crockery as well as square cut nails. The line as finally run falls just west of this site.

The next located description with a side tie was Walker's call for Mile Post 11 which fell in a bend of South Mary's Creek. The Mile Post call to be 200 varas north of the creek and about 80 varas east of the creek. The line as finally run falls as close to this point as is possible to determine by measurements from the existing creek.

Walker's Mile Post 12 calls to be on the east bank of a deep ravine course north. The line as finally run crosses the north end of a north-south ravine and New Mile Post 12 is set in the east bank of the ravine.

At Walker's Mile Post 12 plus 1000 varas is a call for 12 Live Oaks 5 inches each from which a large grove of Live Oaks bears N 80° W about one half mile and the Live Oak clump calls to be 100 varas short of the call for the main fork of Mary's Creek. This clump of Live Oaks now consists of 5 Live Oaks 15" to 18" in diameter and 6 Live Oaks 8 to 10

inches in diameter standing inside a 25 ft. circle. There is still a large grove of Live Oaks that bear N 80° W, 2000 ft. The center of this clump of Live Oaks was used as one of the control points of the line as finally run.

Walker's Mile Post 13 calls to be on the east bank of a drain course south. New Mile Post 13 is on the east bank of a drain.

At Walker's Mile Post 15 plus 1200 varas there is a call for a Live Oak post in a pile of rock on the south side of the Belknap (Fort Worth to Fort Belknap) Road. The rocks have probably been gone a long time, but the wagon ruts are still there.

The country south of Mile Post 16 is mostly open prairie land with timber in the river and creek bottoms while to the north the country is scattered woods and sandy fields. Walker used trees for mile posts or as witnesses in the north part of his line. None of these trees were found. Lewellen Murphy's notes indicate that his line was marked or witnessed by trees alone and none of these trees were found.

At Mile Post 29 plus 960 varas Walker calls for his line to pass on 'the east side of a very large and bold running spring'. The spring has now been dammed up to make a pond and the location of the original spring cannot be determined exactly. The line as finally run falls through the pond and seems to be to the east side of what appears to be the main stream of the spring.

Walker witnessed the northwest corner of Tarrant County with four Post Oak trees. None of these trees are now standing. The stump of a very large Post Oak is still in evidence and the tree is identifiable on the 1942 aerial photographs. The Tarrant County Surveyors records show that the J. Pope Survey northwest corner was the northwest corner of Tarrant County and used the same call for some of the witness trees. Examination of this Survey indicates that the stump was one of the witness trees, a Post Oak that bears S 83° W, 22 varas from the County corner. The northwest corner of Tarrant County and the northeast corner of Parker County was set from this stump and is adopted as the corner.

The Special Surveyor for Parker County was not satisfied with the findings in the north part of the line and ran a random line from the adopted northeast corner of Parker County to a point about Walker's Mile Post 11. Points reckoned on this line agreed favorable with the final line.

The final line was established as a straight line using the agreed common north corner of the line between Tarrant and

Parker Counties as one point and the clump of Live Oaks at Walker's Mile Post 12 plus 1000 varas as the second point. This section of line was projected south to intersect with the south line of Tarrant County as established by J. J. Goodfellow in 1891. Mile Posts 28 and 29 on the south line of Tarrant County are still in place and the line between these posts was extended to the west to an intersection to establish the southwest corner of Tarrant County and the southeast corner of Parker County.

The entire line was run on line, there being no offsets or deviations from the straight course. Control measurements were made on the entire length of the line with electronic measuring devices, the Tellurometer and the Geodimeter, and distances from control points to Mile Posts and other ties were taped on line. Bearings and coordinates shown are for the North Central Texas Zone of Texas on the Lambert Coordinate System. The North end of the line is tied to U. S. Coast and Geodetic Survey triangulation Stations Smith and Green. The south end of the line is tied to triangulation Stations Monroe 2 and Dickson. Mile Posts were set by Tarrant County Engineering Department under the supervision of Steve Champeaux at points established by the Special Surveyors. All mile and corner posts, hereinafter called 'regular posts', are precast stone (concrete) six inches square in section, five feet long, set three feet in the ground and with the appropriate mile or corner designation cast in the post as well as the letters TC. All mile posts are set at one mile intervals (5280.0 ft. or 1900.8 varas horizontal measurement) except Mile Post 22 which was moved north to fall in a fence at the land owners request and Mile Post 26 which was moved south because the exact mile fell in the bottom of a deep draw. Additional posts, monuments and points were set along the line and are described in the following field notes;

BEGINNING at the southwest corner of Tarrant County and the southeast corner of Parker County as established by projecting the south line of Tarrant County as marked by Mile Posts 28 and 29 set in 1891 by J. J. Goodfellow to an intersection with the common line between Tarrant and Parker Counties as established from well identified points on the original line run by A. G. Walker in 1855. Said corner is marked with a regular post with an underground mark consisting of a brass plug set in concrete under the post, is N 89° 05' W, 5445.4 ft. from Mile Post 29 on the south line of Tarrant County and whose Lambert Grid Coordinates are x-1,983,875.7, y-323,277.2;

FIRST MILE: Thence N 1° 00' 54" E, at 285.55 ft. the center line of the Santa Fe Railroad; at 355.7 ft. a 5/8" reinforcing bar set in the center of a county road (T. C. Road No. 1042); at 388.3 ft. a 4" square concrete post set in north fence line of said road; at 2617.1 ft. a 5/8" reinforcing bar with aluminum plug set in fence line on the south line of the J. L. Goforth Survey 985 ft. west of its southeast corner; at

Tarrant Co. Bdry Line 5

5280.0 ft. MILE POST 1, a regular post set in the west side side of a clump of small trees on the southwest slope of a hill and being 933 ft. west of the east line of the said Goforth Survey;

SECOND MILE: Thence N 1° 00' 54" E, at 367.1 ft. a 4" square concrete post set on top of a rocky ridge in pasture land; at 3955 ft. the center of Bear Creek, course east, 100 ft. wide; at 5280.0 ft. MILE POST 2, a regular post set in a cultivated field 526.8 ft. east of the fence on the west line of the M. Bonner Survey, a 20 penny nail driven in the south prong of a Bois d'Arc clump bears N 35° 18' W, 169.1 ft.;

THIRD MILE: Thence N 1° 00' 54" E, at 5280.0 ft. MILE POST 3, a regular post set in a pasture 420 ft. west of the east line of the G. H. Tarpley Survey;

FOURTH MILE: Thence N 1° 00' 54" E, at 3145.6 ft. a fence on the north line of the G. H. Tarpley Survey 369 ft. west of the northwest corner of the said Tarpley Survey; at 3302.1 ft. a 4" square concrete post on a high ridge; at 4151.5 ft. a 5/8" reinforcing bar with an aluminum plug set in the center of the paving on U. S. Highway No. 377; at 5280.0 ft. MILE POST 4, a regular post set in a pasture;

FIFTH MILE: Thence N 1° 00' 54" E, at 90.1 ft. the fence on the south line of the W. T. Stewart Survey 600 ft. east of the southwest corner of said Stewart Survey; at 1679.7 ft. the center of a county road (T. C. Road No. 1101) with 0.6 ft. square concrete posts set in the north and south right of way fences 20.1 ft. from the center line and being 617 ft. east of the northwest corner of the said Stewart Survey; at 3042 ft. the center of the Clear Fork of the Trinity River, course east, 70 ft. wide; at 5280.0 ft. MILE POST 5, a regular post set on the east side of a small draw in a wooded pasture;

SIXTH MILE: Thence N 1° 00' 54" E, at 945.2 ft. a 5/8" reinforcing bar with aluminum plug set in the center of the paving on State F-M Highway No. 2376 which runs northwest-southeast; at 4002.9 ft. the south line of the J. F. Gomer Survey 79.5 ft. west of a flat, set stone marked 'SE COR J F GOMER'; at 5280.0 ft. MILE POST 6, a regular post set in the edge of a cultivated field on the west side of a small draw;

SEVENTH MILE: Thence 1° 00' 54" E, at 3552.9 ft. the north line of the J. F. Gomer Survey 17.5 ft. west of a flat, set stone marked 'NE COR J F GOMER'; at 5280.0 ft. MILE POST 7, a regular post set on a high rocky ridge;

EIGHTH MILE: Thence N 1° 00' 54" E, at 4458 ft. fence on the south line of the Wm. Robinson Survey; at 5280.0 ft. MILE POST 8, a regular post set in level pasture land;

Tarrant Co. Bdry, Line 5

NINTH MILE: Thence N 1° 00' 54" E, at 3457.2 ft. a 0.6 ft. square concrete post set in the south right of way of a county road; at 3477.8 ft. a 5/8" reinforcing bar with copper plug set in the center of a east-west county road (T. C. Road No. 1024); at 3574.2 ft. center line of main track of the Texas & Pacific Railroad; at 5280.0 ft. MILE POST 9, a regular post set in a pasture;

TENTH MILE: Thence N 1° 00' 54" E, at 5280.0 ft. MILE POST 10, a regular post set in a pasture;

ELEVENTH MILE: Thence N 1° 00' 54" E, at 4676 ft. the center of South Mary's Creek, course east, 40 ft. wide; at 5280.0 ft. MILE POST 11, a regular post set in a pasture;

TWELFTH MILE: Thence N 1° 00' 54" E, at 1948.3 ft. the south right of way fence of U. S. Highway No. 80, 12.6 ft. west of a concrete ROW Monument; at 2025.8 ft. the center line of the south paved lane of said highway; at 2071.3 ft. the center line of the north paved lane of said highway; at 2129.4 ft. the north right of way fence of said highway 10.0 ft. west of a concrete ROW Monument; at 4331.3 ft. a 5/8" reinforcing bar with aluminum plug set on a rocky ridge; at 5280.0 ft. MILE POST 12, a regular post set in the east bank of a ravine on the north side of a pile of large rock forming a retard dam in the ravine;

THIRTEENTH MILE: Thence N 1° 00' 54" E, at 1672.9 ft. the the southwest corner of the B. F. Richerson Survey bears east 23.1 ft.; at 2777 ft. a clump of Live Oaks (5 trees 15" to 18" and 6 trees 8" to 10") in an area about 25 ft. in diameter and being the same clump of trees call for on Walker's line; at 2927.3 ft. a set stone in a fence corner, the westerly northwest corner of the Richerson Survey, bears west 2.0 ft.; at 2998 ft. the center of Mary's creek, course east, 100 ft. wide; at 5280.0 ft. MILE POST 13, a regular post set on the east side of a draw in a pasture;

✓ FOURTEENTH MILE: Thence N 1° 00' 54" E, at 132.0 ft. a 5/8" reinforcing bar with copper plug set in the center of a northeast-southwest road (T. C. Road No. 1022) with 0.6 ft. square concrete posts on line in the right of way fences 28.8 ft. north and 37.9 ft. south of the reinforcing bar; at 450 ft. the south line of the A. Boon Survey 425 ft. west of its southwest corner; at 5280.0 ft. MILE POST 14, a regular post set in a pasture;

✓ FIFTEENTH MILE: Thence N 1° 00' 54" E, at 5280.0 ft. MILE POST 15, a regular post set on the northeast slope of a hill in a pasture;

SIXTEENTH MILE: Thence N 1° 00' 54" E, at 1068.7 ft. a 0.6 ft. square concrete post with a 'T' cut on top in the southwest right of way fence of White Settlement Road (T. C. Road No. 1007); at 1102.6 ft. a railroad spike in the center of said

road; at 1136.5 ft. a 0.6 ft. square concrete post set in the northeast right of way line of said road; at 4884.6 ft. a 0.6 ft. square concrete post set on the south side of a pasture road at the top of a rocky slope to the north; at 5280.0 ft. MILE POST 16, a regular post set on a rocky north slope in a wooded pasture;

SEVENTEENTH MILE: Thence N 1° 00' 54" E, at 4155.5 ft. a square concrete post set in the southeast right of way fence of a county road (T. C. Road No. 1007); at 4187.1 ft. a 5/8" reinforcing bar with aluminum plug set in the center of said road; at 4224.4 ft. a 0.6 ft. square concrete post set in the northwest right of way fence of said road; at 5280.0 ft. MILE POST 17, a regular post set on a rocky north slope in a pasture;

EIGHTEENTH MILE: Thence N 1° 00' 54" E, at 3052.5 ft. the fence on the south line of the Mary A. Freeman Survey; at 5280.0 ft. MILE POST 18, a regular post set in a sandy field;

NINETEENTH MILE: Thence N 1° 00' 54" E, at 1865 ft. the center of Silver Creek, course southeast, 100 ft. wide; at 3651.6 ft. a 5/8" reinforcing bar with aluminum plug set in the center of the paving of State F-M Highway No. 1886; at 4327.7 ft. a 4" square concrete post set on a rocky, timbered ridge; at 5280.0 ft. MILE POST 19, a regular post set in a wooded pasture;

TWENTIETH MILE: Thence N 1° 00' 54" E, at 221.5 ft. the fence on the west line of the Stephens Best Survey; at 3018 ft. the north line of said Best Survey 1239 ft. easterly from its northwest corner; at 3154 ft. the center of Mill Creek, course southeast, 40 ft. wide; at 5280.0 ft. MILE POST 20, a regular post.

TWENTY-FIRST MILE: Thence N 1° 00' 54" E, at 4018.9 ft. a 4" square concrete post set in the south right of way fence of a county road; at 4037.5 ft. a 5/8" reinforcing bar set in the center of said county road; at 5280.0 ft. MILE POST 21, a regular post set in a cultivated field on a north slope;

TWENTY-SECOND MILE: Thence N 1° 00' 54" E, at 420 ft. the fence on the north line of the O. K. Davis Survey 1139 ft. west of its northeast corner; at 5344.0 ft. MILE POST 22, a regular post set in an east-west fence;

TWENTY-THIRD MILE: Thence N 1° 00' 54" E, at 1263 ft. the fence on the north line of the R. A. Paschal Survey 497 ft. east of the northwest corner of said Paschal Survey and 21 ft. east of the northerly southwest corner of the G. W. Mc Kinsey Survey on the north line of the said Paschal Survey; at 2461.6 ft. the fence on the north line of the G. W. Mc Kinsey Survey 36 ft. east of the northwest corner of the G. W. Mc Kinsey Survey; at 3321.9 ft. a 5/8" reinforcing bar with aluminum plug set in the center of a public road 166 ft.

Tarrant Co. Bdry. Line 5

westerly from the center of the Silver Creek-Azle Road; at 3675.7 ft. a 5/8" reinforcing bar with aluminum plug set in the center of the Silver Creek-Azle Road; at 3895 ft. a 5/8" reinforcing bar with aluminum plug set in the center of Thomas Road 55 ft. easterly from the center line of the Silver Creek-Azle Road; at 4405.5 ft. a 'T' cut on the top of the center guard post on the east side of the Reynolds Branch bridge; at 4841.8 ft. a 4" square concrete monument set flush with the ground on the north side of Stewart Street in Azle at the intersection of Stewart Street and the Silver Creek-Azle Road; at 5216.0 ft. MILE POST 23, a regular post set on the south bank of Ash Creek;

TWENTY-FOURTH MILE: Thence N 1° 00' 54" E, at 96 ft. the center of Ash Creek, course east, 130 ft. wide; at 1685.2 ft. a 5/8" reinforcing bar with aluminum plug set in the center of the paving of Old State Highway 199; at 2035.5 ft. a 5/8" reinforcing bar with aluminum plug set in the center of Wayne Street in Azle; at 2716.6 ft. a square concrete monument set flush on the south side of Roe Street in Azle; at 3167.3 ft. a square concrete flush monument set 5 ft. south of the curb on Industrial Ave.; at 3347.1 ft. a vertical mark cut in the brick on the south wall of a brick store building about 4.5 ft. above the walk and marked PC on the west side and TC on the east side and said mark being 175.9 ft. from the west end of the building and 139.0 ft. from the east end of the building; at 3991.9 ft. a 5/8" reinforcing bar with aluminum plug set in the center of State Highway No. 199, a reference 'T' is cut on the paving slab on the line 26.9 ft. south and 26.6 ft. north; at 5280.0 ft. MILE POST 24, a regular post set in the back lot of a residence in Azle 67 ft. east of a north-south fence and 48 ft. south of an east-west fence;

TWENTY-FIFTH MILE: Thence N 1° 00' 54" E, at 665.9 ft. a 4" square concrete post set in a east-west fence 598.5 ft. west of the center line of State F-M Highway No. 730 and whose Lambert Grid Coordinates are x-1,986,132.0, y-450,619.1; at 3405.8 ft. a 5/8" reinforcing bar with copper plug set in the center of a public road 503 ft. west of the west right of way line of State F-M Highway No. 730; at 3430.8 ft. a 4" square concrete post set in the north fence line of said public road; at 5280.0 ft. MILE POST 25, a regular post set in the back lot of a residence 471.5 ft. west of the west right of way line of State F-M Highway No. 730;

TWENTY-SIXTH MILE: Thence N 1° 00' 54" E, at 1650 ft. the center of Walnut Creek, course east, 90 ft. wide; at 4275.2 ft. a 4" square concrete post set in the south fence line of a county road (T. C. Road No. 4118); at 5180.0 ft. MILE POST 26, a regular post set on the west side of a deep draw in a bend of the draw;

TWENTY-SEVENTH MILE: Thence N 1° 00' 54" E, at 1173.9 ft. a 4" square concrete post set in the south right of way fence

of State F-M Highway No. 1542; at 1223.4 ft. a 5/8" reinforcing bar with aluminum plug set in the center of the paving of said F-M highway 415.7 ft. west of the center line of State F-M Highway No. 730; at 4643.4 ft. the fence on the south line of the J. Nelson Survey 357.5 ft. west of the southeast corner of the said Nelson survey at the center of State F-M Highway No. 730; at 5380.0 ft. MILE POST 27, a regular post set in the back lot of a residence;

Fd — TWENTY-EIGHTH MILE: Thence N 1° 00' 54" E, at 2113.8 ft. a 4" square concrete post set in the south fence line of a county road (T. C. Road No. 4038) 259 ft. west of the west right of way line of State F-M Highway No. 730; at 5280.0 ft. *Gow* MILE POST 28, a regular post set in a cultivated field;

Fd — TWENTY-NINTH MILE: Thence N 1° 00' 54" E, at 4405.6 ft. a 4" square concrete post set on the west side of the top of a steep rocky hill; at 5280.0 ft. MILE POST 29, a regular post set in a pasture;

fd — THIRTIETH MILE: Thence N 1° 00' 54" E, at 1211.0 ft. a 5/8" reinforcing bar with aluminum plug set in the center of the paving of State F-M Highway No. 2257, 88 ft. west of the west right of way line of State F-M Highway No. 730; at 3419 ft. a point on the south bank of a circular pond about 75 ft. in diameter fed by a spring originating in the south bank of the pond west of the line; at 4777.3 ft. a 5/8" reinforcing bar with a copper plug set in the north fence line of the J. D. Spain Survey 500 ft. east of the northwest corner of said Spain Survey and 42 ft. west of the west right of way line of State F-M Highway No. 730; at 6498.6 ft. the NORTHWEST CORNER of Tarrant County and the NORTHEAST CORNER of Parker County, a regular post with an underground *fd.* mark consisting of a brass plug set in concrete under the post, said post being 19.5 ft. west of the west right of way of State F-M Highway No. 730, in a east-west fence line and whose Lambert Grid Coordinates are x-1,986,702.8, y-482,841.5.

Survey completed October 1964.

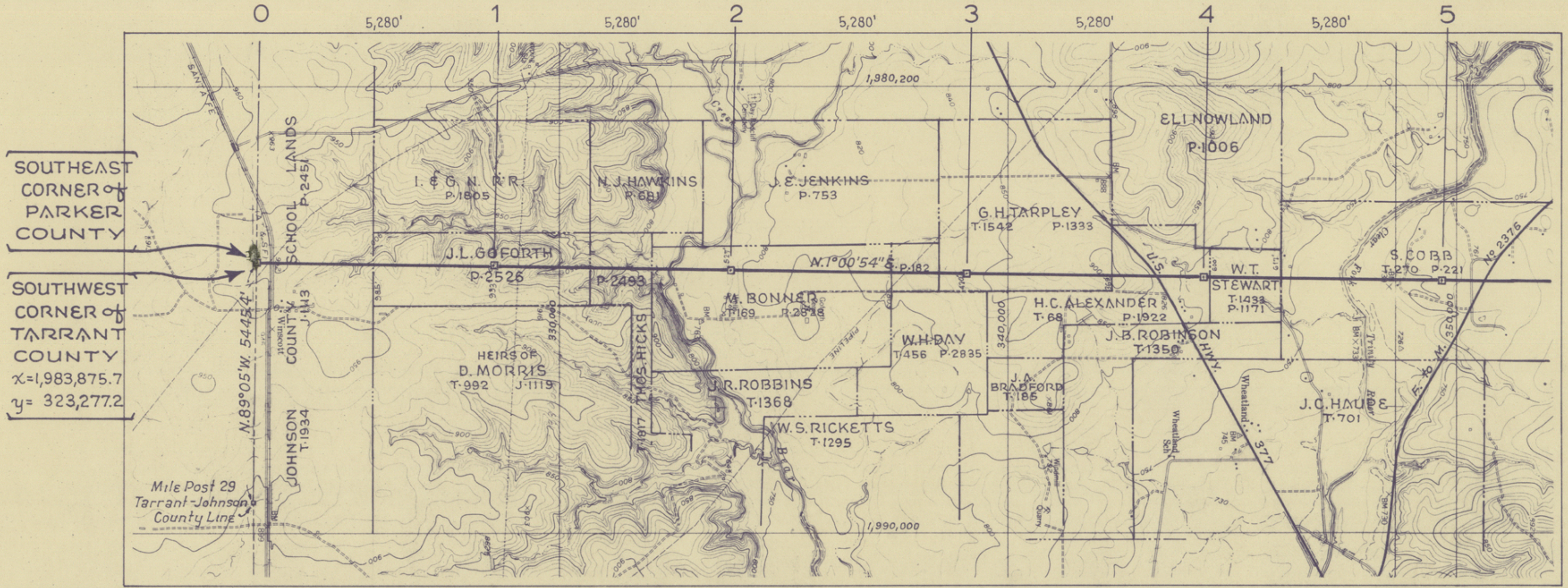


R. G. Brown

R. G. Brown, Special Surveyor for Tarrant Co.

G. F. Mann, Special Surveyor for Parker Co.

Tarrant co. Bdry. Line 5



SOUTHEAST CORNER of PARKER COUNTY

SOUTHWEST CORNER of TARRANT COUNTY

$x = 1,983,875.7$

$y = 323,277.2$



MILE 0 to MILE 10

LINE BETWEEN TARRANT and PARKER COUNTY TEXAS

SCALE 1 INCH = 2000 FEET

NOTE ~ Grid lines, coordinates and bearings are based on Lambert coordinate system North Central Zone of Tex..

RECEIVED

MAR 10 1965

General Land Office

EXHIBIT "B"

R. H. Brown

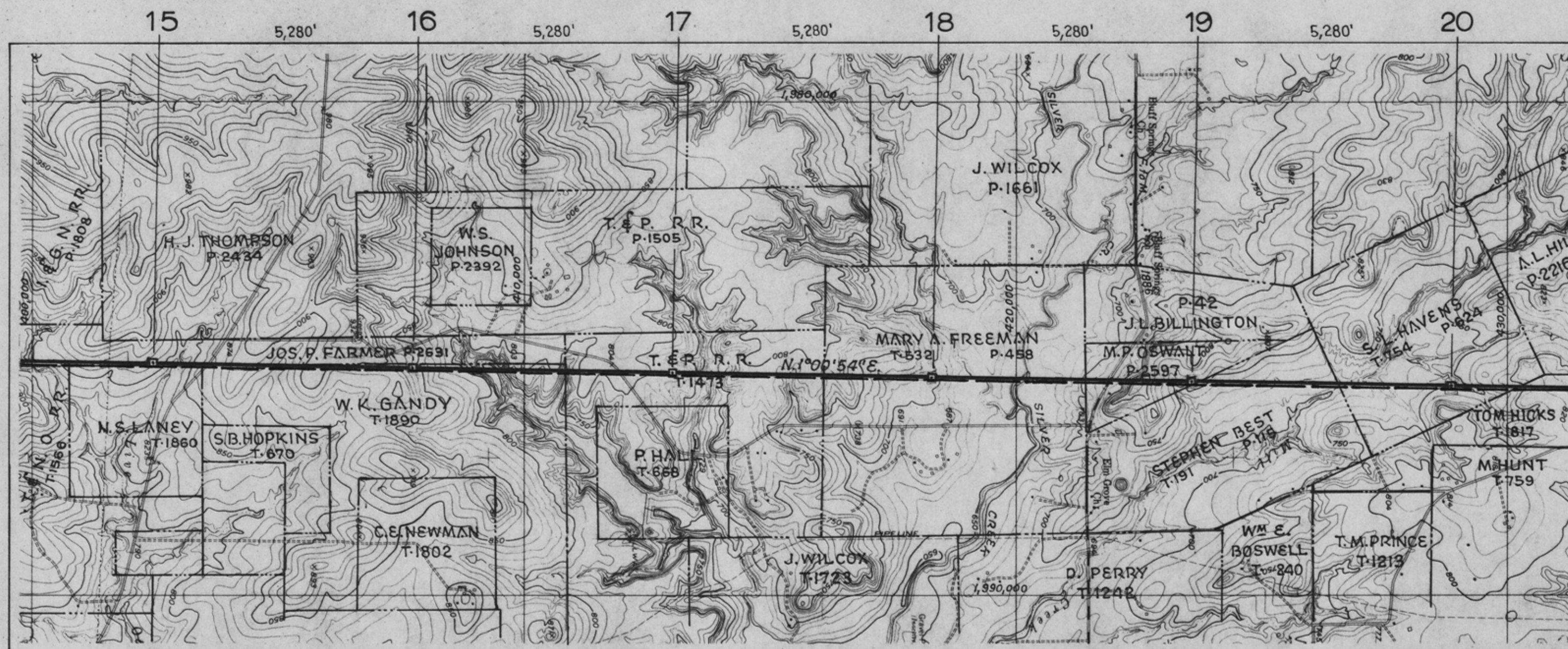
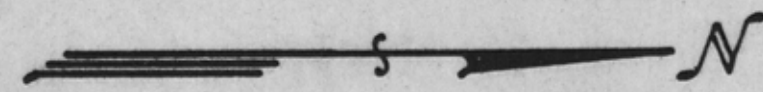
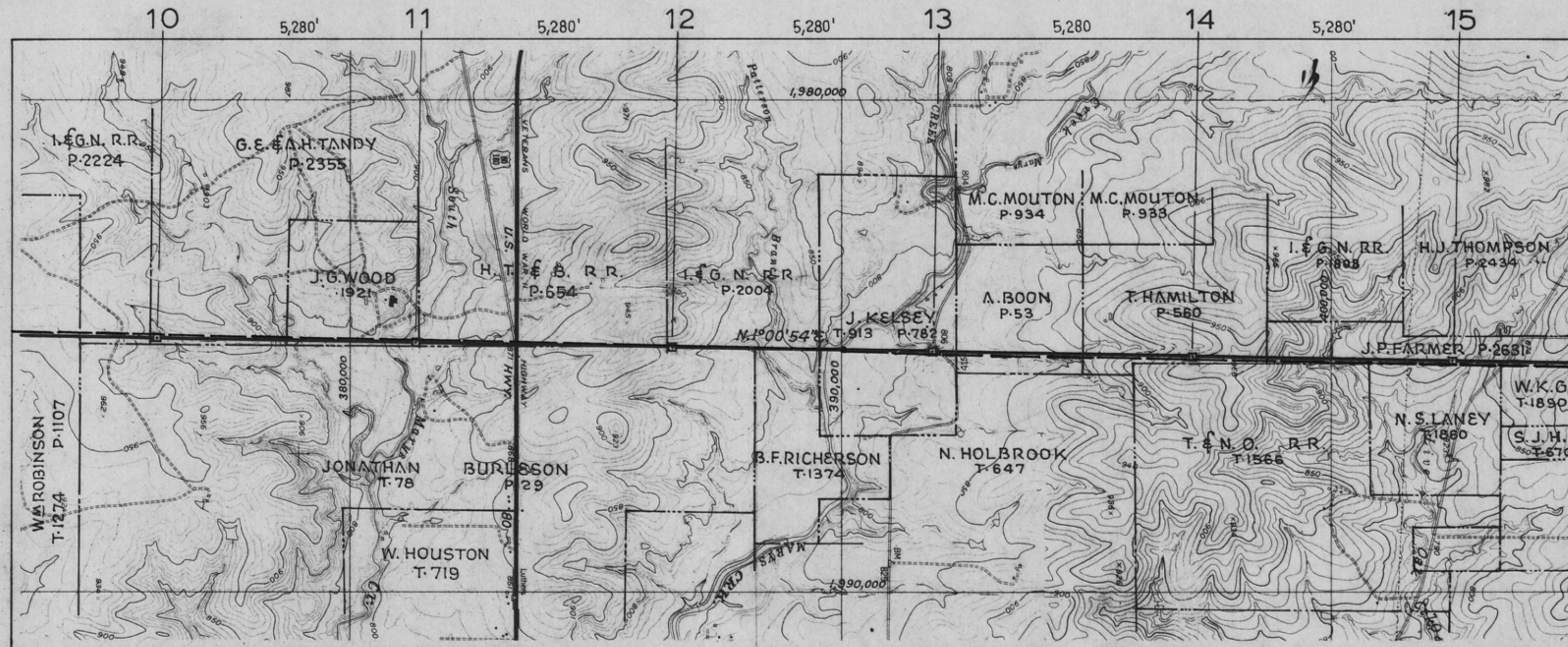
SPECIAL SURVEYOR TARRANT CO.

SPECIAL SURVEYOR PARKER CO.



Base Map - U.S. Geological Survey 7.5' series topographic maps - Cresson, Alledo, Springtown S.E. and Azle.

Conten 65351



MILE 10 *to* MILE 20
LINE BETWEEN TARRANT and PARKER COUNTY TEXAS

SCALE 1 INCH = 2000 FEET

NOTE - Grid lines, coordinates and bearings are based on Lambert coordinate system North Central Zone of Tex.

RECEIVED
 MAR 10 1965
 General Land Office

EXHIBIT "B"

R. A. Brown
 SPECIAL SURVEYOR FOR TARRANT CO. ★ SPECIAL SURVEYOR FOR PARKER CO.



Base Map - U.S. Geological Survey 7.5' series topographic maps - Cresson, Aledo, Springtown S.E. and N.31E.

County 65352

The Tarrant-Parker County Line as established by the General Land Office is depicted by a broken line (---), being east of the dark line shown on the above map and is more fully described by attached description.

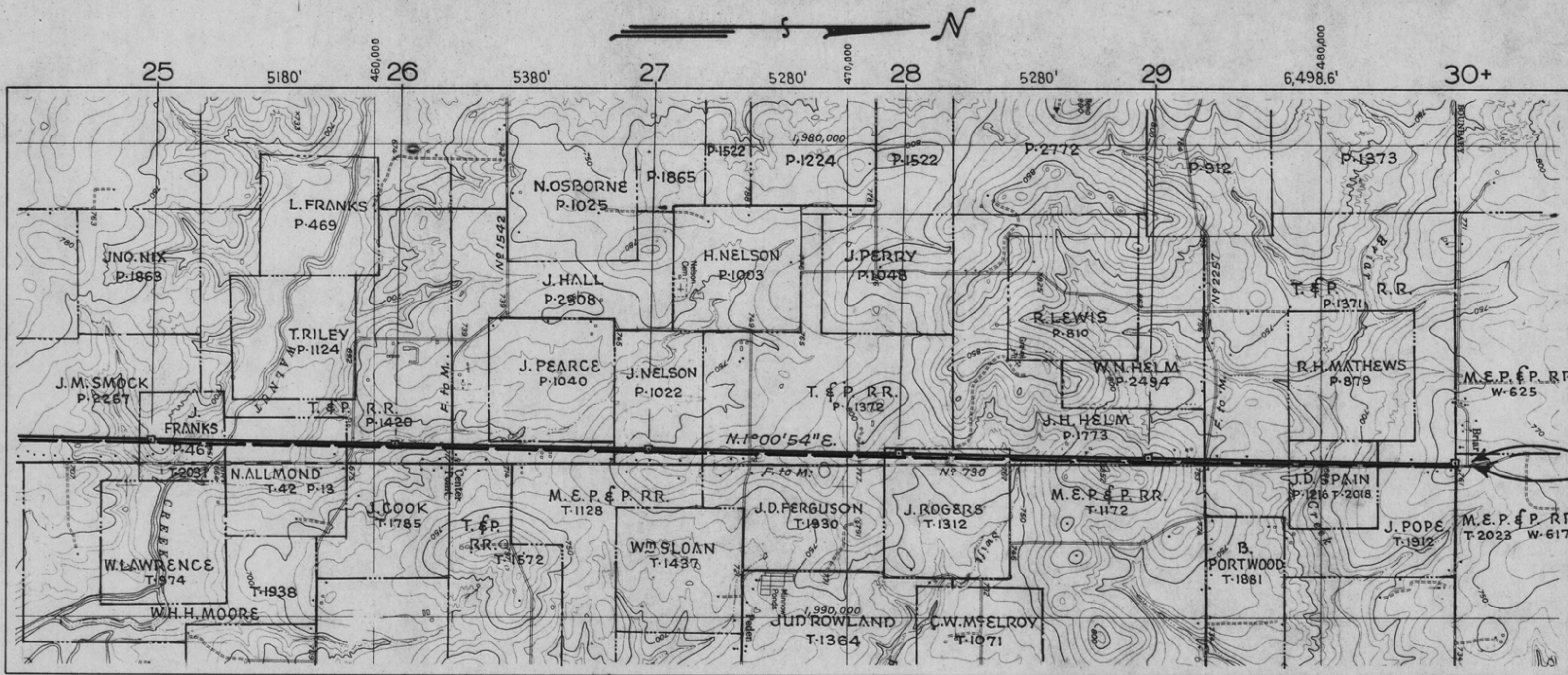
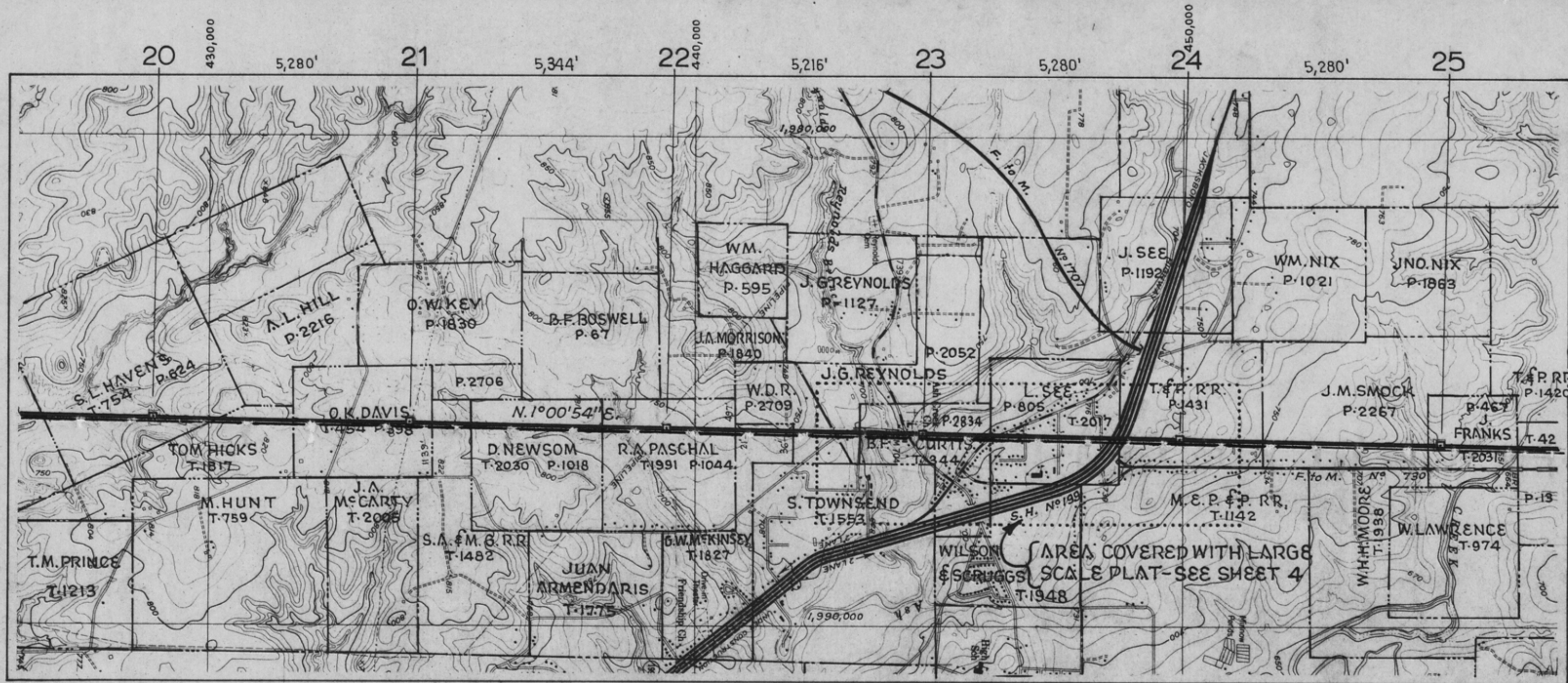


EXHIBIT "B"

NORTHEAST CORNER OF PARKER COUNTY

NORTHWEST CORNER OF TARRANT COUNTY
 x=1,986,702.8
 y= 482,841.5

R. G. Brown
 SPECIAL SURVEYOR FOR TARRANT CO.

SPECIAL SURVEYOR FOR PARKER CO.



RECEIVED
 MAR 10 1965
 General Land Office

MILE 20 to MILE 30 LINE BETWEEN TARRANT and PARKER COUNTY TEXAS

SCALE 1 INCH = 2000 FEET

NOTE ~ Grid lines, coordinates and bearings are based on Lambert coordinate system North Central Zone of Tex.

Base Map - U.S. Geological Survey 7.5' series topographic maps - Cresson, Alamo, Springtown S.E. and N3E.

SHEET 3 of 4 SHEETS

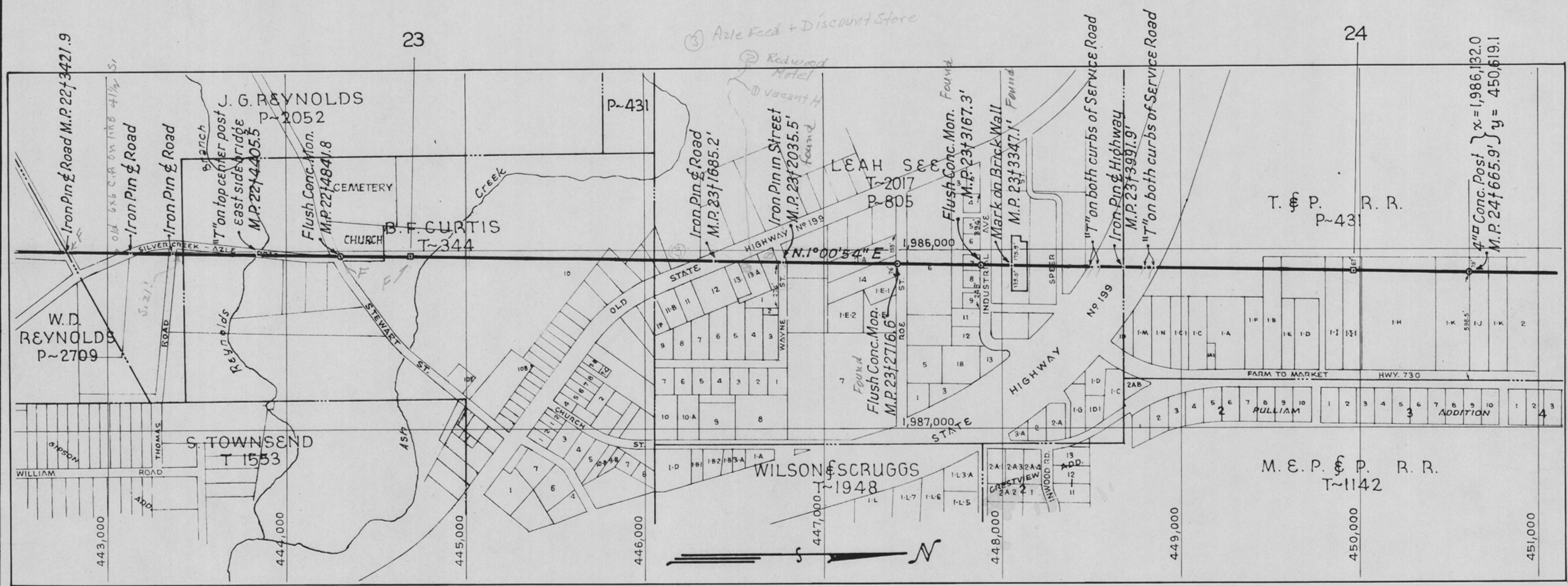


EXHIBIT "B"



R. G. Brown
SPECIAL SURVEYOR for TARRANT CO.



SPECIAL SURVEYOR for PARKER CO.

MILE 22.6 to MILE 24.2 LINE BETWEEN TARRANT and PARKER COUNTY TEXAS

SCALE 1 INCH = 400 FEET

NOTE ~ Grid lines, coordinates and bearings are based on Lambert coordinate system North Central Zone of Tex.

RECEIVED
MAR 10 1965
General Land Office

Base Map - U.S. Geological Survey 7.5' series topographic maps - Cresson, Alamo, Springtown S.E. and Azle. ~ ~