

Tom Green Co
County Texas

Filed Febry 23/88

See endorsement of Co. and
~~Tom Green Co (John Zackey)~~
on back of letter from Co
Clk of Tom Green Co (Jno
Zackey, dated Febry 22/88
Apr. 2/88 G. N. Ransom

Tom Green Co Bdry Line 1

San Angelo Texas

November 1887

To The Commissioners Court of Tom Green
County;

In Obedience to an Order of
Your Hon Court passed the 12th day
of September A.D. 1887 ordering H. B. Hamer
County Surveyor of Tom Green County
to meet the Surveyor of Runnels County
to assist him in surveying the
boundary line between Runnels
and Tom Green Counties and make
report of same

I Submit the following Report
and Sketch of Survey
to wit; a survey by H. B. Hamer
and H. E. Dickerson County of Runnels Co. Texas

Beginning at the S.W. corner of Runnels County
a stone monument marked 30 S.W. Cor R.C. the
same being one hundred varas North and four
hundred and twenty five varas West of the S.E. Cor
of Survey N^o sixty two P. & N. O. R. Co. Thence North
at 985 varas cross a creek, at one mile a stone
monument set in the ground, marked on East
side R.C. one M. on the W side P. G. Co. 1 M. at 2 M^o
monument set in ground marked R.C. 2 M. on East
side. and P. G. Co. 2 M. on W side. At 3 miles monument
set in ground marked on East side R.C. 3 M^o and
P. G. Co. 3 M. on West side. At 3 M^o 210 varas cross creek.
At 4 M^o stone monument in the ground marked on
East side R.C. 4 M. and on the W side P. G. Co. 4 M.
At 4 M^o 320 varas cross creek. At 5 m a stone monument
marked on the E side R.C. 5 m, and on the W side
P. G. Co. 5 m. At 6 m a monument in the ground
marked on the E side R.C. 6 m and on the W side
P. G. Co. 6 m and 114 varas cross creek and at 1177
rs cross another creek. At 7 m a stone monument
marked on the East side R.C. 7 m. and on the
W side P. G. Co. 7 M. At 8 m a stone monument
marked on the East side R.C. 8 m and on the
W side P. G. Co. 8 m. At 9 m. stone monument marked
on East side R.C. 9 m. and on W side P. G. Co. 9 M.
At 10 m a stone monument marked on East side
R.C. 10 m and on W side P. G. Co. 10 m. At 11 m.
a stone monument marked R.C. on East side
R.C. 11 m. and on W side P. G. Co. 11 m. At 12 m a
stone monument marked on East side R.C. 12 m
and on the W side P. G. Co. 12 m. At 13 M^o 192 varas

cross creek. At 13 ms a stone monument marked on
East side R. C. 13 m. and on the W. side T. G. Co 13 m.
At 14 ms a monument marked on East side R. C. 14 m.
and on the W. side T. G. Co 14 m. At 15 ms a stone
monument marked on East side R. C. 15 m. and
on the W. side T. G. Co 15 m. At 16 ms a stone monument
marked on the East side R. C. 16 m and on the W.
side T. G. Co 16 m. At 16 miles and 1445 varas cross a
branch. At 16 Ms 1652 varas south bank of Colorado
River. A stone and S. 60. E. 3730 varas, and 1380 varas
S 30 W from the S. W. cor of Sec No 219. At 17 Ms a stone
monument marked on the East side R. C. 17 m. and
on the W. side 17 m. At 17 Ms and 1680 varas a point
500 varas N. 60 W from the N. E. cor of Sec No 220.
At 18 ms a stone monument marked on the East
side R. C. 18 m. and on the West side T. G. Co 18 m.
At 19 ms a stone monument marked on the East
side R. C. 19 m. and on the West side T. G. Co 19 m.
At 20 Ms a stone monument marked on the East
side R. C. 20 m. and on the West side T. G. Co 20 m.
At 21 ms a stone monument marked on the East side
R. C. 21 m. and on the West side T. G. Co 21 m.
At 22 Ms a stone monument marked on the East
side R. C. 22 m. and on the West side T. G. Co 22 m.
which monument is 80 varas North and 540
varas East of the N. W. Cor of Sec No 24 E & W T
R. R. Co. At 23 m a stone monument marked on
the East side R. C. 23 m. and on the West side
T. G. Co 23 m. At 23 M. 910 varas cross a creek.
At 24 Ms a stone monument marked R. C. 24 m on
the East side and T. G. Co 24 m. on the West side.

At 25 ms a stone monument marked on the East side R. C. 25 m and on the West side T. G. Co. 25 m.

At 25 ms 680 varas top of mountain. At 26 ms a monument on North side of the top of m^t marked on East side R. C. 26 m and on the West side T. G. Co. 26 m.

At 27 ms a stone monument marked on the East side R. C. 27 m. and on the West side T. G. Co. 27 m.

At 28 ms a monument on top of Mountain marked on the East side R. C. 28 m. and on the West side T. G. Co. 28 m.

At 28 ms and 1260 varas cross Oak Creek. At 14 varas a point from which the S. E. cor of the Martinez bar is West 2969 varas and 8600 varas.

At 29 m a monument in valley marked on the East side R. C. 29 m and on the West side T. G. Co. 29 m.

At 30 ms a stone monument marked on the East side R. C. 30 m and on the West side T. G. Co. 30 m. At 30 ms and 140 varas a point from which Fort Chadbourne is 330 1/2 West and at 1460 varas Fort Chadbourne is 27 1/2 West

31 varas. At 31 ms a stone monument marked R. C. on East side and T. G. Co. 31 m on West side.

At 32 m a stone monument marked on the East side R. C. 32 m. and on the West side T. G. Co. 32 m.

At 33 m a stone monument marked on the East side R. C. 33 m and on the West side T. G. Co. 33 m.

At 34 m a stone monument marked on the East side R. C. 34 m and on the West side T. G. Co. 34 m. The same being on the South line of Polk County and the N. E. corner of Tom Green County.

At 35 m a stone monument marked on the East side R. C. 35 m and on the West side T. G. Co. 35 m.

The State of Texas
County of Tom Green

I John Suckey Clerk of the County Court and for said State and County do hereby certify that the foregoing instrument of writing is a true and correct copy of the Report of H. B. Farver County Surveyor of Tom Green County of a survey of the boundary line of Tom Green County between said County and Runnels County

attest John Suckey Clerk of the County Court and ex officio Clerk of the Commissioners Court of Tom Green Co

GIVEN UNDER MY HAND AND OFFICIAL SEAL THIS 22nd DAY OF

July 1858

John Suckey
Clerk

Tom Green Co. Bary Line

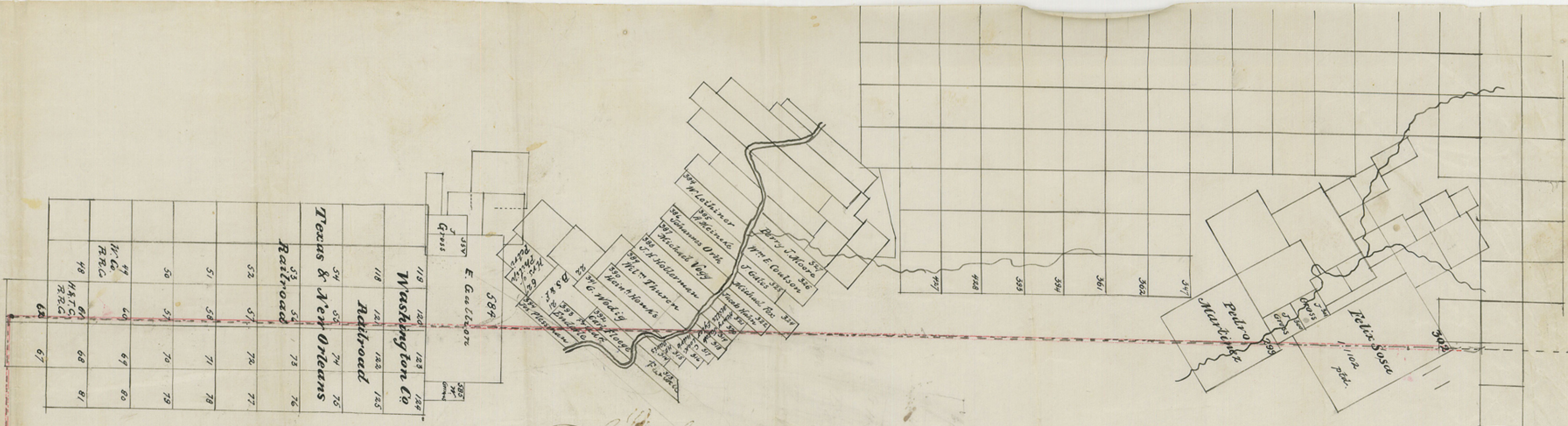
Line between
Runnels
&
Tom Green Co

Filed Nov 16th 1887

John Suckey
Clerk

Filed Feb. 23/88

Abstract Corrected
March 9/88
Runnels



I, A. B. Turner County Surveyor, Tom P. Moore do hereby certify that the above is a true and correct sketch of the boundary line surveyed between Tom Moore and Rummel's counties and that connecting with known boundary corner

A. B. Turner
 County Surveyor

N 42 E
 instead of N 30 E

cut 59334