

San Angelo Texas  
Nov 1887

To the Honorable Commissioners Court of Tom Green County  
In obedience to an order of your Honorable  
Court, directing A. B. Towner County Surveyor  
of Tom Green County, to meet the Surveyor of  
Midland County and such other Surveyors  
as may be necessary, on the 18<sup>th</sup> day of August  
1887, to survey and establish the N.E. corner of  
Tom Green County.

passed June 13 1887.

I proceeded to the place ordered by said  
Court on the day aforesaid with Deputy Surveyor  
U. G. Taylor and met Mosely County  
Surveyor of Midland County and in  
compliance with said order established  
the said corner and herewith respectfully  
submit the following sketch and report of  
survey to wit -

Beginning at the North East corner  
of Pannels County at a stone 2 1/2 feet out of the  
ground marked on East side N W corner C. C.  
30 M 1885. On West side N E cor R C 1885.  
Thence due West 30 miles and established the  
North East corner of Tom Green County a monument  
3 feet high marked on the West side N E cor  
T G C<sup>o</sup> near cedar knoll from which the West  
point of Mountain brs N 47 1/2 W. the East of another  
brs N 22 E. a bushy top mountain brs S 71 E a  
round rough hill brs S 35 1/2 W about 200 rods.  
The North West corner of Rays Preemption Survey  
brs N 65 W 33 rods. Nipple Peak brs S 44 1/2 W.  
Thence West at 1 mile a monument mdd N L T G C<sup>o</sup> 1 M.

Tom Green Co. Dry. Line #2

At 54 miles monument mtd N L T & C<sup>2</sup> 54 miles, at 285 cross branch  
 . 55 . . . . . 55 . at 587 no cross cross  
 ft 600 no S of N. E cor 147, S. E. cor 146 Blk 29. H &  
 N. H. R. R. Co & N H cor line 3 Blk 7 H & S. C. R. R. Co  
 at 795 no cross Mustang Creek 150 no S of  
 D. Barnetts house.

At 56 miles monument mtd N L T & C<sup>2</sup> 56 miles, at 980 ft of Barnett Pt  
 . 57 . . . . . 57 . on East side Road  
 . 58 . . . . . 58 . at 490 cross, 975 no cross  
 . 59 . . . . . 59 . at crossing of Dry branch  
 . 60 . Stone monument 3 feet high set in ground  
 made for the North West cor of Tom Green County on  
 head of draw, marked on South side NW Cor T & C<sup>2</sup>  
 from which a mt about 250 no on N ft of mountain  
 bro N 63 N. a stone mtd West 124 no, from which said  
 stone mtd. Signal Pt of mt N 20 1/2 N. Gap in Signal  
 mt N 23 1/2 N. Top of Round mt N 21 E large magnite  
 on North edge of Mountain bro S 68 E. White spot on West  
 end Red Ridge of Mountains N 32 1/2 E.

Thence we proceeded from said North West corner  
 of Tom Green County, West 30 miles and established  
 the North West <sup>East</sup> corner of Midland County, with the  
 Surveyor of Midland County. Thence with the  
 North line of Midland County 30 miles to the North  
 West cor of Midland County a Monument 3 feet  
 high mtd NW Cor M C<sup>2</sup> and find said corner  
 to be 1700 no N and 3 1/2 miles E of the N H cor of  
 Survey No 1 Block #1 Township N<sup>2</sup> 1 south the  
 corner referred to as the beginning pt in a  
 survey made for the purpose of ascertaining  
 the area of Hard, Loving and Lane Counties  
 in a report made to the Commissioners Court  
 Aug 8<sup>th</sup> 1887. to which this is supplemental

2850  
475  
2325

and a final Report of the same, which after making proper correction and additional surveying and measuring from proper and established corners as above referred to in this our final report

We find the area of Loving County to be  $742\frac{1}{4}$  square miles  
Craw County to be 719 square miles,  
and Hard County to be  $727\frac{1}{2}$  square miles.

A. B. Tarrow  
County Surveyor Tom Green Co Tex  
W. G. Taylor Deputy Surveyor

Chairmen

L. J. B. Chetwood }  
Wm Johnson } A. B. Tarrow County Surveyor of Tom Green  
Graham } County appointed by the Commissioners Court  
Thos Burnett } of Tom Green County to <sup>assist in</sup> surveying & marking

the north line of Tom Green County, and calculating the area of the New Counties of Ward, Ector and Loving Counties do hereby certify that the line was surveyed and marked in accordance with law and and that the marks both natural and artificial are truly described and that the connections with known surveys are correct

A. B. Tarrow  
Co Surveyor Tom Green Co  
Texas

2700  
2950  
6650  
9350

The State of Texas  
County of Tom Green I John S. [unclear]  
Clerk of the County Court in and for  
said State and County do hereby certify  
that the foregoing instrument of writing  
is a true and correct copy of the  
report of A. B. Tarrow County Surveyor  
of Tom Green County in establishing  
the north boundary line of Tom

Tom Green Co  
Edg. Lm # 2

Green County as the same appears  
of Record in the Records of the Commission  
Court of said County

Attest John Sackett, Clerk  
County Court and ex officio Clerk  
Commissioners Court of Town  
Green County

Given under my hand  
and seal this 27<sup>th</sup> day of  
July 1888

John Sackett  
Clerk



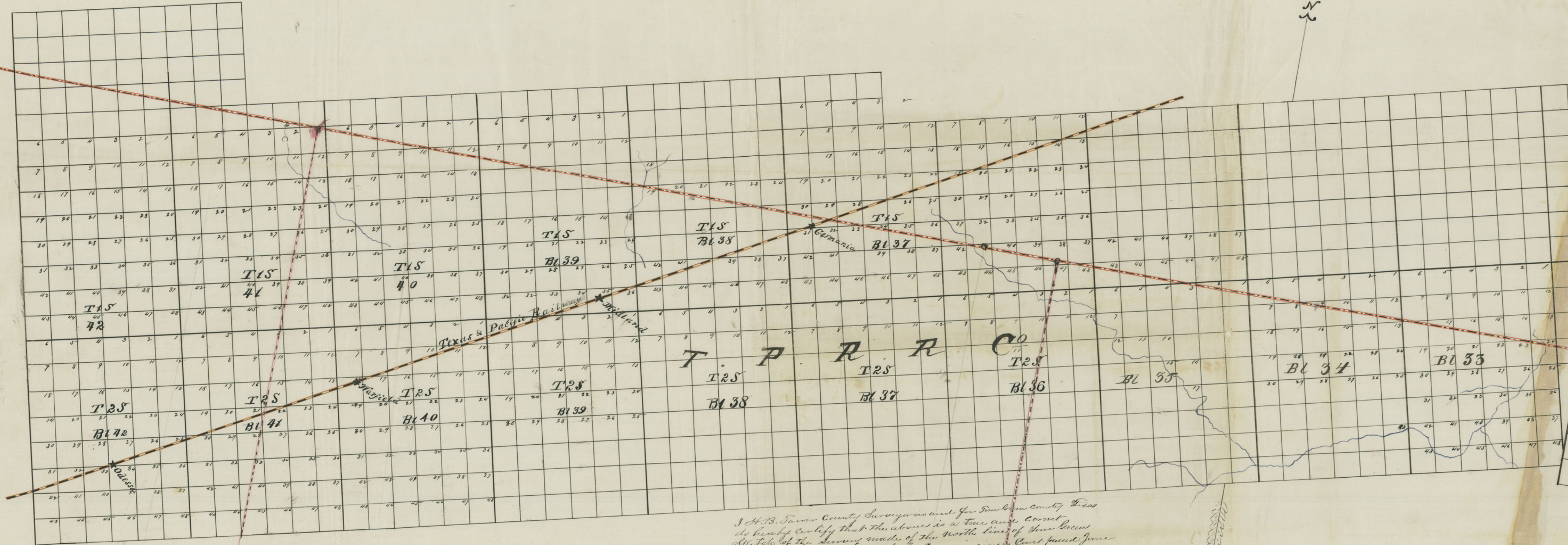
orig. 21. June of J. B. Co

Tom Green Co ~~4~~ Bary Line 2

Filed Aug 8<sup>th</sup> 1888

John S. Lusk

books let 7, 9, 10



I, A. B. Jones, County Surveyor and for Donnell County, Iowa do hereby certify that the above is a true and correct copy of the Survey made of the North line of these lands County, made by order of the Commissioner of Land and Survey Iowa 1854

A. B. Jones  
County Surveyor Iowa



Geo. R. Jones