

The State of Texas, } To the Hon. Commissioner Court
Tom Green County } of Tom Green County, Texas:

In obedience to an order of your Honorable Court Passed the 12th day of May A.D. 1890. directing the Surveyor of Tom Green County, H.B. Torver to meet the Surveyor of Coke County, on the 2d day of June A.D. 1890 (the same being Monday) and establish by actual survey on the ground the South line of Coke County Texas, and the north line of Tom Green County Texas, to the south west corner of said Coke County, and to make a full and complete survey as required by Law:

I respectfully submit the following report of said survey as above ordered and directed and accompanying sketch as required by Law.

The Surveyor of Coke County failing to meet me at said S.E. corner of Coke County as ordered by the Court. I proceeded to, and made the following survey to wit:

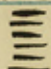
Beginning at a point 930 hrs N 22 1/2° W from the N.W. corner of Survey No. 73 N. Co. R. R. Survey, the same being the S.E. corner of Survey No. 74 same Company on the west line of Russell County Texas at which point I established the north east corner of Tom Green County, and the southeast corner of Coke County Texas by placing a large monument in the ground 5 feet high marked on the south side NE COR TGC and on the north side SE COR CC from which a point of Hill. Brs N 14 E another pt of Hill Brs S 66 1/2 E.

Thence West at 1 mile placed stone in ground 3 feet high mka on N side C Co 1 m + on S side TGC 1 m

Tom Green Co Bathy Line 3

- 1 at 2 miles Stone 3 feet high mkd as above
 2 " 3 " " " " " " " "
 3 " 4 " " " " " " " " on
 4 side point of hill. at 4 miles 990 yrs Cross Cedar
 5 creek
 6 at 5 miles a monument marked as above from
 7 which a Live Oak 12 in dia brs N 10 E mks C Co
 8 3 yrs at 300 yrs Road place Rock mks Co Line
 9 at 6 miles on top of mountain at 6 miles and 1740
 10 yrs yrs cross mustang creek
 11 At 7 miles a stone monument in flat south of
 12 Rapdales Preemption at 7 miles + 270 yrs cross
 13 another Prong of Mustang creek
 14 at 8 miles a st. monument mark as above from
 15 which the NE Cor of Sur No. 16 D. mo. Co brs N 61 E
 16 270 yrs. at 8 miles + 1800 yrs Cross D creek
 17 at 9 miles Stone monument marked as above
 18 at 9 miles and 1350 yrs cross Crow Nest creek at
 19 1560 yrs Cross Road at 10 miles Stone monument
 20 mkd on N side C. Co 10 N + on south side T G Co 10 N
 21 At 11 miles Stone monument mkd as above
 22 at 11 " and 600 yrs Cross East line of "V.P" Pas-
 23 ture fence at 11 miles and 1440 yrs. Cross Road place
 24 mkd mks Co L at 12 Stone monument mks T G Co
 25 12 N on S side and C Co 12 N on N side. at 12 miles
 26 + 390 yrs v Road at 12 miles 490 yrs pass 10 yrs north
 27 of Rock House in South end of Beau metton Red
 28 Creek
 29 at 13 miles Stone monument marked on S side
 30 T G Co 13 N on N side C Co 13 N
 31 at 14 miles Stone monument mkd as above
 32 " " " + 1830 yrs cross Bald Eagle Creek
 " " " " 1845 " " Road
 at 15 " Stone monument on E side of mountain mark
 as above

- 1 at 16 miles Stone monument marked as above
2 at 17 miles Stone monument mk as above
3 at 18 " " " " "
4 " " " and 2700rs has 1200rs north from the S.E.
5 Corner of Survey no. 642 at 18 miles 1700rs cross East
6 Grape Creek
7 at 19 miles Stone monument mk on N side C Co 19
8 m on S side T G Co 19 m
9 at 20 miles Stone monument mkd as above
10 at 20 " x 1620rs cross West Grape Creek Road
11 At 21 miles a Stone monument 30rs E of West
12 Grape Creek at 21 miles x 30rs cross Grape Creek
13 at 22 miles Stone monument at East end of
14 mountain, mkd on N. side C. Co 22 M x S Side
15 T G Co 22 M
16 at 23 miles Stone monument marked as above
17 at 24 miles " " " as above
18 " " " 780rs cross creek
19 at 25 miles a Stone monument mkd on S side
20 T G Co 25 M on N side C. Co 25 m
21 at 26 miles Stone monument mk as above
22 " " " x 930rs Cross Chack creek
23 at 27 miles Stone monument at NE Pt of hill marked
24 as above 27 m
25 at 28 miles on W side of hill a Stone monument
26 mkd on S side T G Co 28 M x N side C Co 28 M
27 at 29 miles Stone monument in Vally
28 at 29 " x 630rs Cross Spur oak creek
29 A 30 miles Stone monument mkd mkd as above
30 x 30 m at 30 miles x 30rs cross Road
31 at 31 miles Stone monument 40rs W of Road mkd
32 on N side C Co 31 m on S side T G Co 31 m

1 At 32 miles stone monument mk on N side C Co. 32
2 m on S side T G Co 32 m x 1800 rs cross walnut
3 creek mhd Pecan Tree 

4 At 33 miles stone monument at 33 miles x 570
6 rs cross North Concho River 368 rs below the lower
6 corner Sur No x 325 rs below the mouth
7 of Mulberry creek

8 At 34 mile large stone monument mhd on N
9 side S.W. cor. C. Co on S. side NW cor T G Co.
10 from which Gogatha Mt has a 62 W the N
11 Point of another has S 47 1/2 W. a 20 rs N 79 W

12 July 1890
13 H. D. Farner
14 County Surveyor Tom Green Co
15 Texas.

H. D. Farner

Report 2

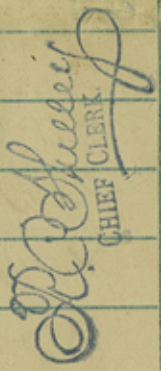
21 This Aug 1890

22 E. Duggan
County Clerk

23 Dr Felix Probst
Deputy

24 & Sime Cook Co

Filed Decemb. 18th 1890.


CHIEF CLERK

Tom Green Co Bary Line 3



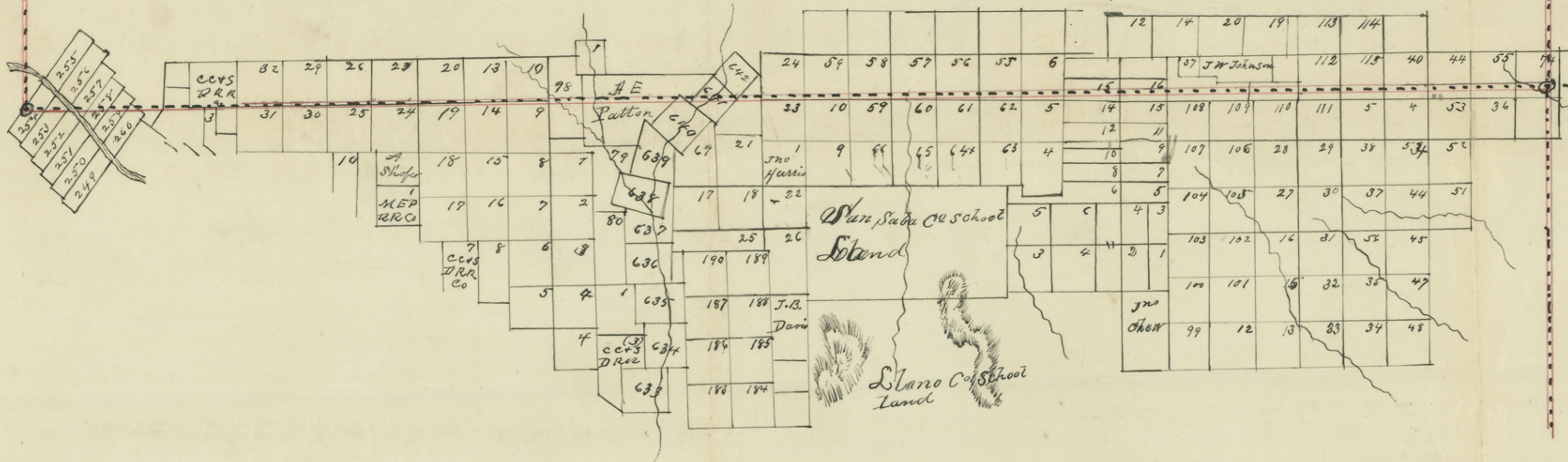
State of Texas, I, E. Duggan, Clerk of the
County of Tom Green, County Court within and for Tom Green
County, Texas, do hereby certify that the foregoing ^{and} hereto
attached 3 pages ^{and} 15 lines of manuscript contain a true
^{and} correct copy of the original report of H. B. James, County
Surveyor of Tom Green County, Texas, ^{and} field notes a survey of the
boundary line between Cope ^{and} Tom Green Counties, Texas,
now on file in my office, ^{and} recorded in the minutes of the
Commissioners Court of Tom Green County, Texas.

Witness my hand ^{and} the seal of said court at
office in San Angelo, this the 10th day of October, A.D. 1890

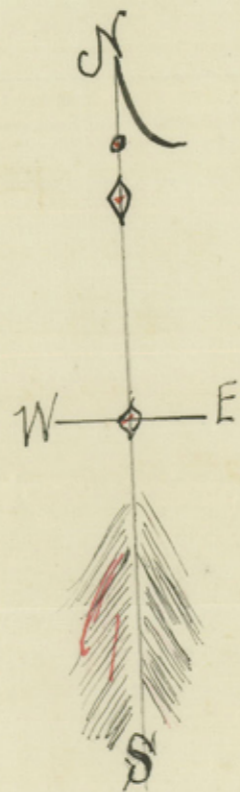
E. Duggan, Clerk
County Court Tom Green County, Texas.

By Felix Probandt Deputy

COKE C^o



Runnels County



The State of Texas & I the Tarrant County Surveyor of Tarrant County, Texas do hereby certify that the above sketch is a true and correct representation of the South line of Coke County and the North line of Tarrant County as surveyed by order of the Commissioners Court of Tarrant County, May 12th 1890. and surveyed June 3rd 4th 5. 6. 7. & 8. of June 1890.

H. B. Tarver
Co Sur Tarrant County Texas.

Filed Aug 12/1890

Ed Duggan County Clerk
By Felix Probandt Deputy.

