

Travis Co ~~5~~ Bar- u Line 2

TRAVIS-BASTROP
-Boundary-

Filed Oct 10th 1925

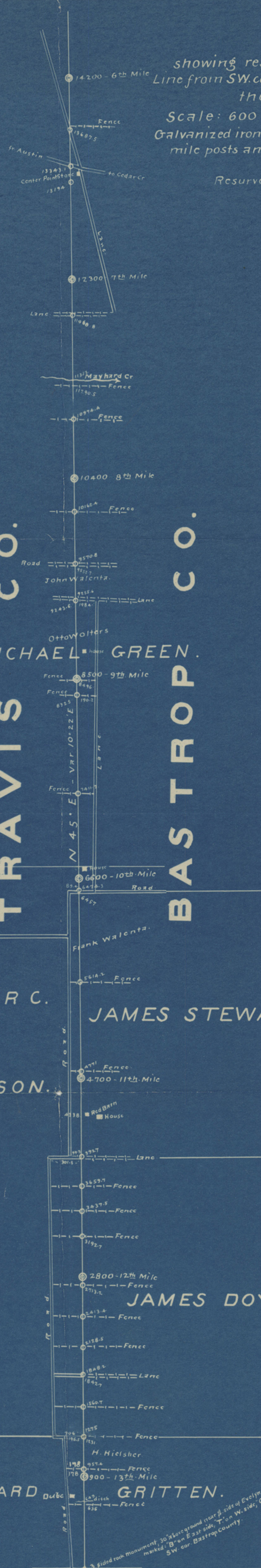
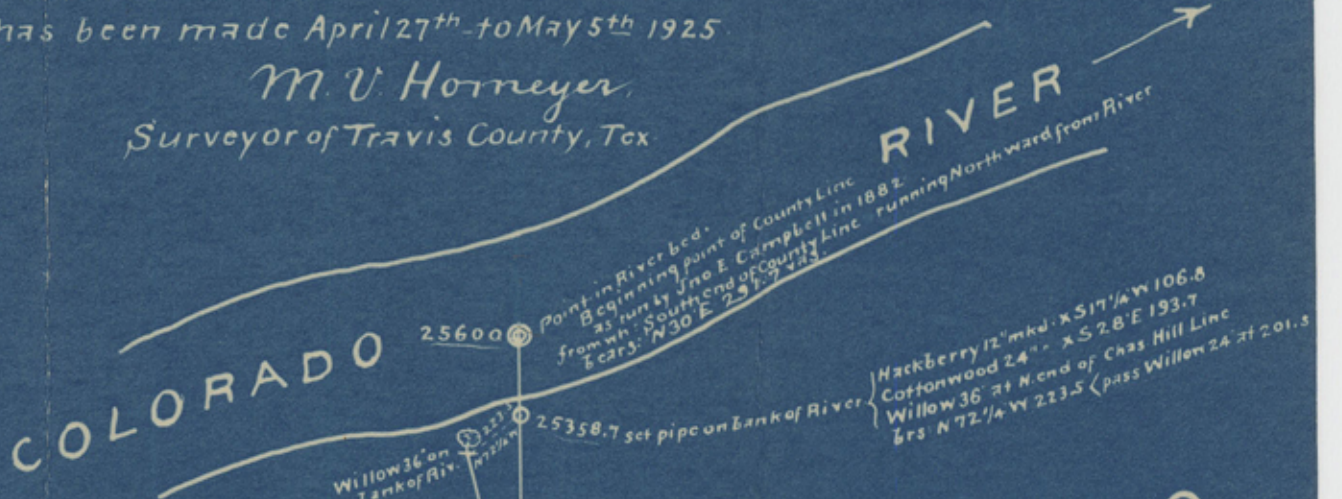
MAP

showing resurvey of Travis-Bastrop County Line from SW. corner of Bastrop County NE. ward to the Colorado River.

Scale: 600 vas. = 1 inch. — Variation: 10° 22' E.
Galvanized iron pipes 3 x 1 1/2" were used to designate the mile posts and crossings of fences as shown on map thus: "⊙-○."

Resurvey has been made April 27th to May 5th 1925.

M. V. Horneyer,
Surveyor of Travis County, Tex.



TRAVIS CO.
BASTROP CO.
MICHAEL GREEN.
OTTO WALTERS
JOHN WALTERS
FRANK WALTERS

PETER C. HARRISON.
JAMES STEWART.

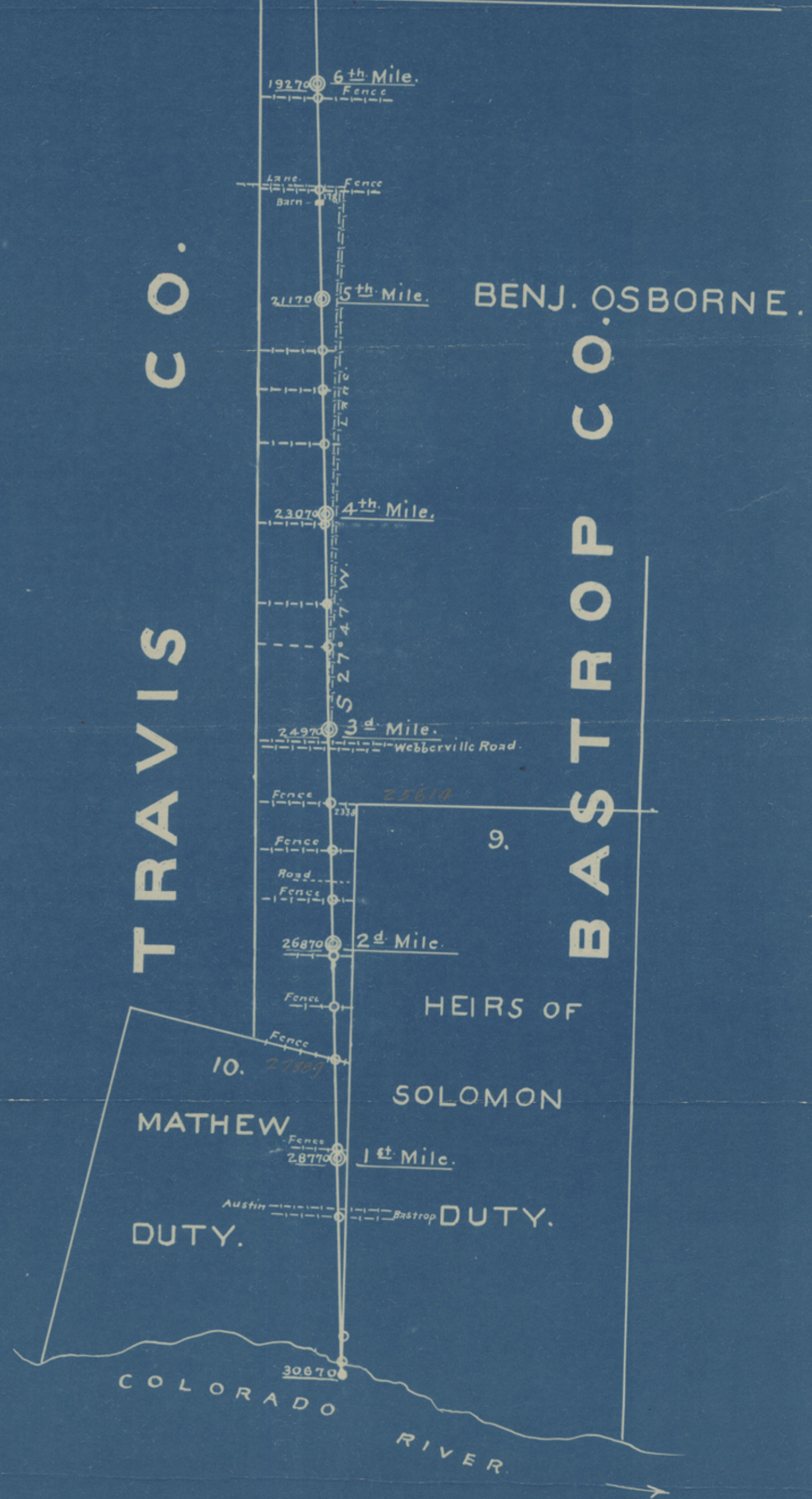
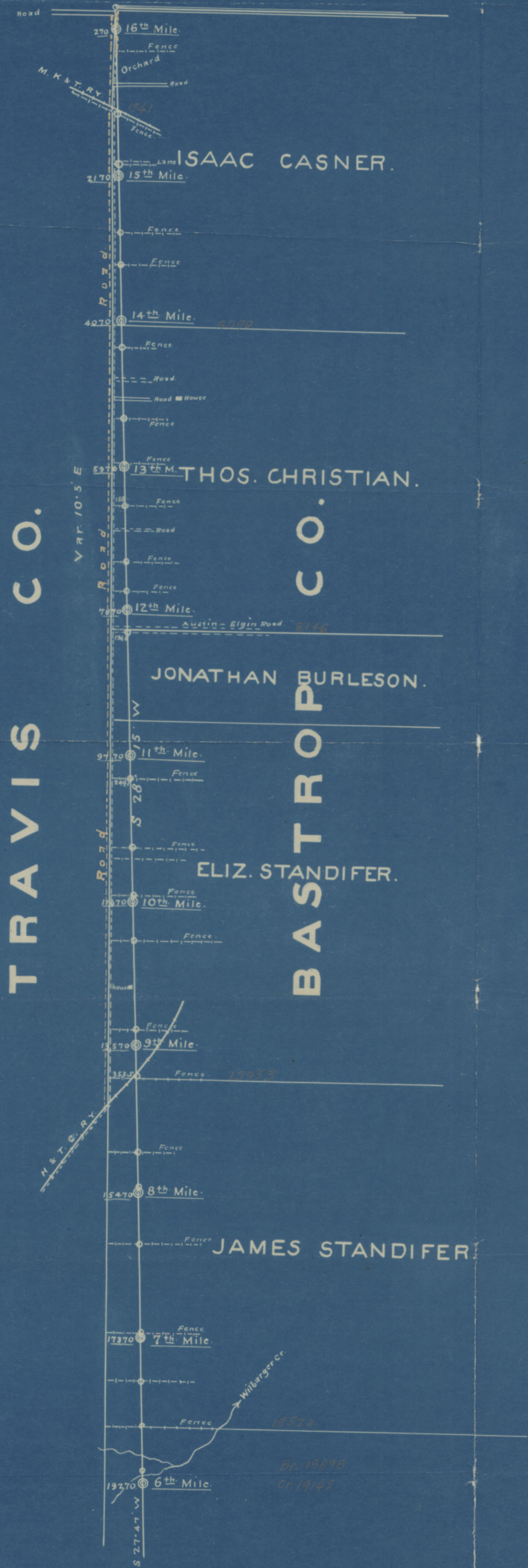
JAMES DOYLE.
H. HIELSHER.
EDWARD GRITTEN.

JAMES S. MONTGOMERY.

Guided rock monument 30' above ground near S. side of Evelyn Road marked: B on E 2nd side, T on W side, C on S side SW. cor. Bastrop County

WILLIAMSON CO.

JAMES STANDIFER.



Scale: 1000 varas = 1 inch.
 Variation: 10.5° E.
 Above County Line was resurveyed in April 1925.
 The pipes used were galvanized iron pipes 3' x 1 1/2".
 and were set at the end of each mile and at the crossing of fences.
 M. V. Hornyer,
 Surveyor of Travis County, Tex.