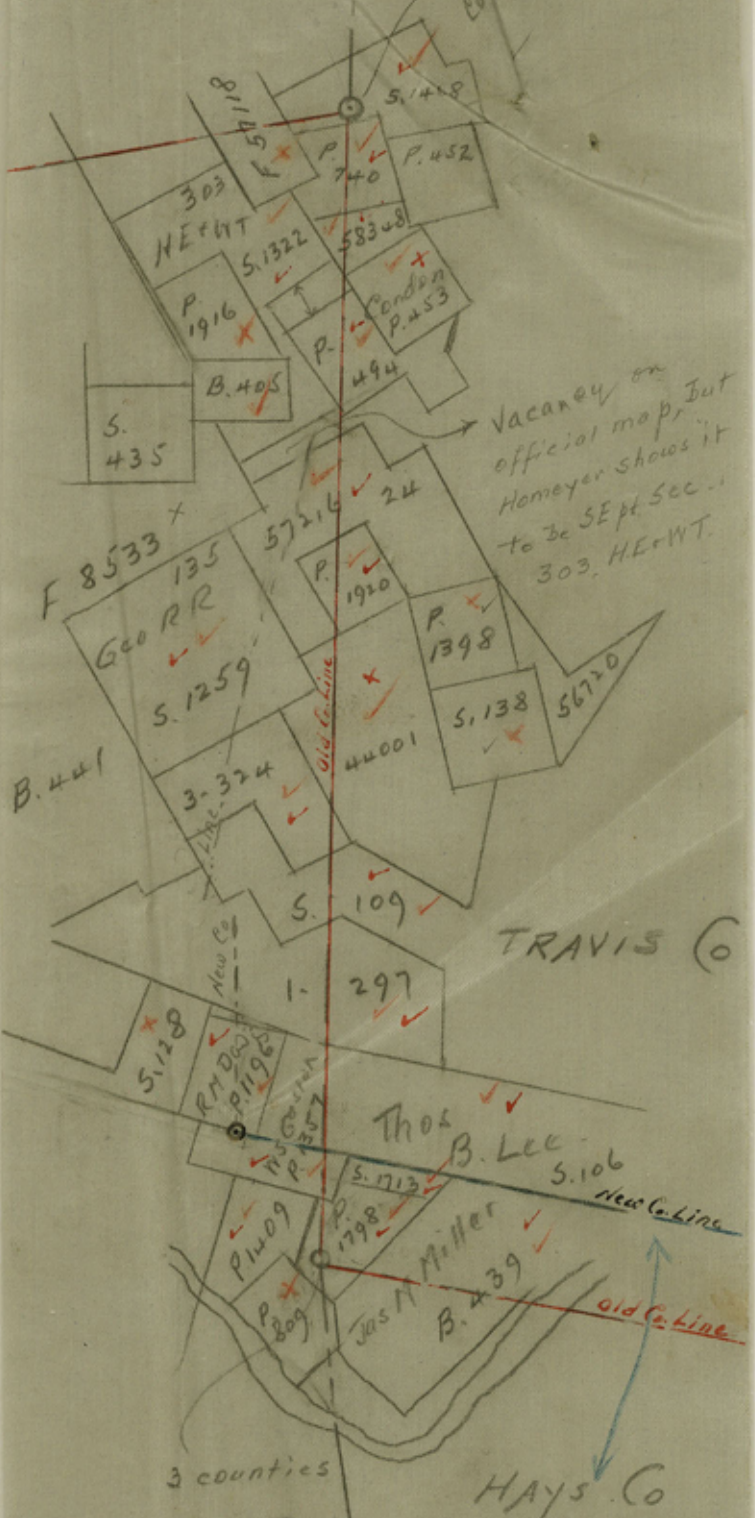


BURNET Co

3 Counties



Vacancy on official map, but Homeyer shows it to be SE pt Sec. 1 303. HErWT.

TRAVIS Co

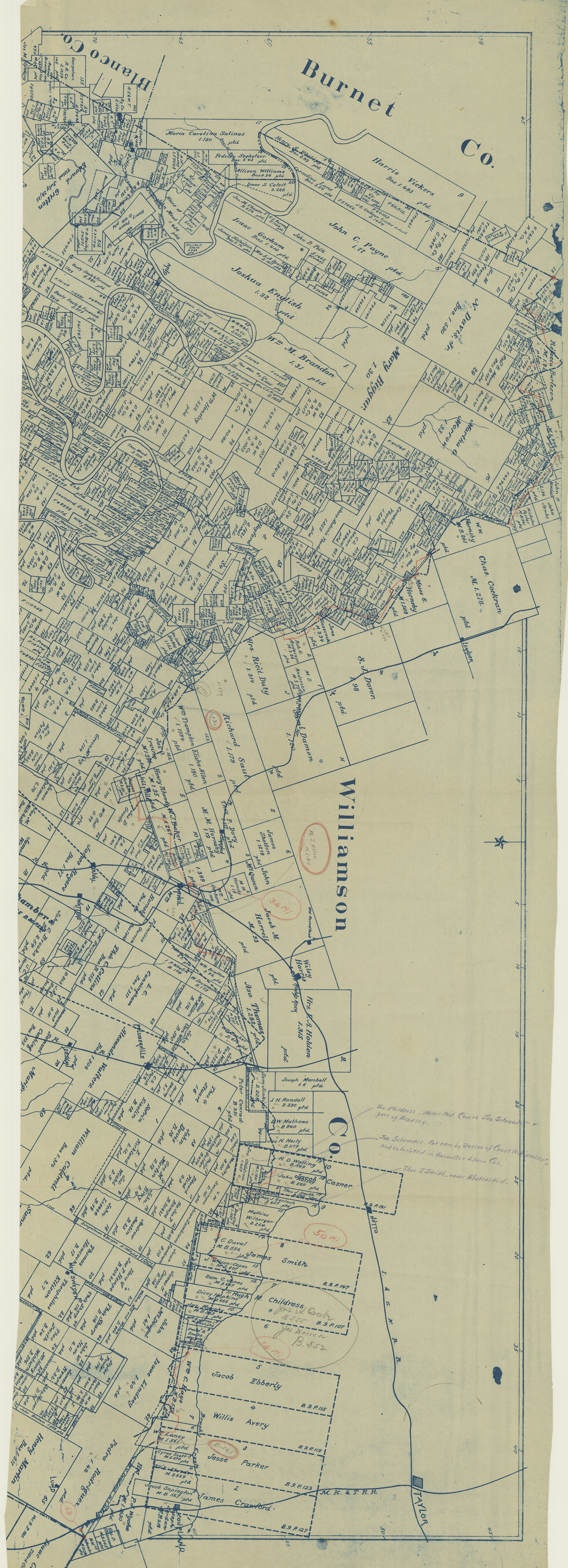
HAYS Co

BLANCO Co

3 counties

(12-2-30) water 54430

Burnet Co.



Williamson

The Childress - Near Hld. Covers The Schroed
part of Bradley.

The Schroeder. Pat can by Decree of Court W. Williamson
and relocated in Gonzales Llano Co.

Thos J Smith, never Abstracted.

Casner

ADITTO

I. & G. N. R. R.

50

50

50

50

50

50

50

50

50

50

81

Travis -
Williamson

Abstract in Vol. 54

