

3
TO THE HONORABLE COUNTY COURT OF TRAVIS COUNTY
TO THE HONORABLE COUNTY COURT OF HAYS COUNTY AND
TO THE HONORABLE COMMISSIONERS' COURT OF TRAVIS AND HAYS COUNTIES, TEXAS

Gentlemen:

Pursuant to your order on the 8th day of March A. D. 1954, to Tom A. Breeze, Hays County Surveyor and to Marlton O. Metcalfe, Travis County Surveyor to survey and mark the lines between the said Hays and Travis Counties, Texas, as agreed upon by the Commissioners' of the County Courts of Hays and Travis Counties, Texas, we submit our report, field notes and maps as requested by the said Courts.

For the most westerly corner of Travis and Hays Counties, Texas, in the east line of Blanco County, we found a pointed stone approximately three feet in height, about eighteen inches across the base and about six inches thick set in an old rock mound, said stone being marked T on the Travis County side and H on the Hays County side. This stone was set for the corner of the Hays, Travis and Blanco Counties by M. V. Homeyer, Surveyor of Travis County, Texas, and Frank Nowlin, Special Surveyor for Blanco County, Texas, on April 29, 1930. From this stone we found the original bearing trees as called for in the Homeyer and Nowlin Report and Field Notes, an 8" Live Oak marked x bears S 72° 15' E 5.3 varas and a 6" Live Oak marked x bears S 42° 00' W 10.0 varas (burnt on the northeast face in 1954) this corner was replaced in 1954 with a concrete monument 12" at the top, 24" at the base and approximately 2½ feet above the ground with a round bronze plate set in the top.

At the common corner of Hays and Travis Counties, in the northwest line of Caldwell County, at the intersection of the DeWitt Colony line and with the old San Antonio-Nacogdoches Road as agreed upon by the Commissioners' Courts of Hays and Travis Counties, this corner we marked with a concrete monument being 12" at the top, 24" at the base and about 2½ feet in height with a round bronze plate set in the top at the intersection of the DeWitt Colony line with the southeast line of the old San Antonio-Nacogdoches Road, said

Travis Co Bdry Line 6

DeWitt Colony line being established by T. Z. Breeze, County Surveyor of Hays County, Texas, at the request of the Honorable Hays County Commissioners' and being varified by Marlton O. Metcalfe, County Surveyor of Travis County, Texas, the location of said DeWitt Colony line being established as follows:

"Herein is contained a report of my findings concerning the location of the South corner of Travis County, Texas, same being the East corner of Hays County, Texas, said corner also being a point in the North West line of Caldwell County, Texas. The information contained herein is compiled from actual Surveys made on the ground by me the 10th, 11th, 12th, and 13th days of March, 1954.

The corner herein referred to has been described as the point of intersection of the De Witt Colony line with the South East line of the Old San Antonio-Nacogdoches Road. To establish this point of intersection it became necessary to verify the correctness of the present location of said Colony Line Road, said roadway being well defined and used, in part, as a public roadway.

To begin this Survey I located on the ground the original rock mound called for at the South corner of the Isaac Allen Survey, Abstract 549, patented March 12, 1853, said rock mound also being the West corner of the Jonathon Burleson Survey No. 12.

The original Survey Notes on both the Allen and Burleson Surveys call for this corner to be a point in the De Witt Colony line.

I then began running a transit line N 45° W from this original corner and at 1270.0 varas, the original call distance in Patent Notes of the Allen Survey, I intersected the center line of a hard top County Road, said center line being the recognized West corner of the Isaac Allen Survey, the South corner of the T. J. Holton Survey, Abstract No. 561, patented March 26, 1853, and also being a point in the West line of the J. H. Bowman Survey.

Continuing on course of N 45° W, and following the general line of said Colony Road, at 2378.6 varas from the West corner of said Isaac Allen Survey, I passed the recognized occupation North corner of the J. H. Bowman Survey, same being the East corner of the Isaac Jackson Survey and upon examination of this area was able to locate an original Mesquite tree called for".

Being satisfied that we were on the DeWitt Colony line we continued on N 45° 00' W, being also the northeast line of the Isaac Jackson Survey and the southwest line of the Thomas J. Hatton Survey to an intersection of the southeast line of the old San Antonio-Nacogdoches Road as fenced and used upon the ground previous to the year 1932, this point being also in the northwest line of a community cemetery, said corner being also near the west corner of the Thomas J. Hatton Survey and the most northerly corner of the John Mott Survey as fenced and used upon the ground.

As previously instructed a line between the recognized common corner of Hays, Travis and Blanco Counties and the agreed common corner in the northwest line of Caldwell County, at the intersection of the DeWitt Colony line with the old San Antonio-Nacogdoches Road, a line was run between these two monuments and starting at the common corner of Hays, Travis and Blanco Counties, a concrete monument was placed at each mile point and on each Highway and County Road, for the purpose of a magnetic bearing, an observation was made on polaris at each end of the line and on the 18 mile post, an average bearing being based upon the 18 mile post which is S 50° 29' E this bearing being used throughout the foregoing description in the field notes describing the Hays and Travis County line as follows:

Beginning at a concrete monument at the common corner of Hays and Travis Counties in the southeast or east line of Blanco County, said concrete monument being 12" at the top, 24" at the base and approximately 2½ feet in height, above the ground, with a round bronze plate set in the top, from which an 8" Live Oak marked x bears S 72° 15' E 5.3 varas and a 6" Live Oak marked x bears

bears S 42° 00' W 10.0 varas, said monument being on the W. S. Gaston Survey #24 partially in Blanco, Hays and Travis Counties;

THENCE with the agreed Hays and Travis County Line, S 50° 29' E at 154.8 varas passing the southwest corner of the R. M. Davis Survey #23 and being also a corner of the W. S. Gaston Survey #24, at 575.0 varas intersecting the southeast line of the W. S. Gaston Survey #24, being also the northwest line of the Thomas B. Lee Survey #430, from which point a bolt set in an old rock mound at the most westerly corner of the Thomas B. Lee Survey #430, and being also the north corner of the M. L. Kellogg Survey #8 bears S 40° 00' W 7.8 varas, said corner being identified by its original bearing trees a 12" Live Oak (dead in 1954) bears S 83° 15' E 74.0 varas and a 14" Live Oak (stump in 1954) bears S 44° 25' E 29.15 varas, at 1900.8 varas set Mile Post #1;

From Mile Post #1 continuing S 50° 29' E, at Mile Post #1 / 141.64 varas the most easterly corner of the M. L. Kellogg Survey #8 and the most northerly corner of the James M. Miller Survey #491, being an old rock mound as identified by its original bearing tree a 30" Live Oak (stump in 1954) bears N 80° 00' E 38.5 varas, said rock mound bears N 42° 23' W 33.9 varas, at Mile Post #1 / 1857.15 varas the most northerly corner of the E. M. Shahan Survey #59 and being also the most easterly corner of the James M. Miller Survey #491, being a set stone in an old rock mound bears S 37° 25' W 54.6 varas, in all 1900.8 varas set Mile Post #2;

From Mile Post #2 continuing S 50° 29' E, at Mile Post #2 / 850.0 varas, more or less, crossing the center of the Pedernales River, at Mile Post #2 / 1832.8 varas intersecting the east line of the Washington Hammett Survey, being also a west line of the C & M. RR. Co. Survey #171, and from which point an iron stake in a rock mound for the most southerly corner of the Washington Hammett Survey and the northeast corner of the North 1/2 of the C. & M. RR. Co. Survey #172 and a corner of the C. & M. RR. Co.

Survey #171, and being also a corner of the J. B. Hammett Survey bears S 24° 32' W 117.5 varas, in all 1900.8 varas set Mile Post #3;

From Mile Post #3 continuing S 50° 29' E 1900.8 varas set Mile Post #4;

From Mile Post #4 continuing S 50° 29' E 1900.8 varas set Mile Post #5;

From Mile Post #5 continuing S 50° 29' E 1900.8 varas set Mile Post #6;

From Mile Post #6 continuing S 50° 29' E, at Mile Post #6 / 794.6 varas set a concrete monument in the west line of Bell Spring Road, said monument marked Travis and Hays, at Mile Post #6 / 1482.8 varas intersecting the east line of the Hinton Curtis Survey #46 and the west line of the Juana Rodriguez Survey #42, from which point a rock mound at the northwest corner of the Juana Rodriguez Survey #42, being also a corner of the G. C. and S. F. RR. Co. Survey #170 bears N 29° 02' E 326.7 varas, in all 1900.8 varas set Mile Post #7;

From Mile Post #7 continuing S 50° 29' E 1900.8 varas set Mile Post #8;

From Mile Post #8 continuing S 50° 29' E, at Mile Post #8 / 522.6 varas set a concrete monument in the west line of the Brooks Ranch Road, said concrete monument marked Travis and Hays, in all 1900.8 varas set Mile Post #9;

From Mile Post #9 continuing S 50° 29' E, at Mile Post #9 / 1404.1 varas intersecting the east line of the Juana Rodriguez Survey #42 and the west line of the H. J. Dorrah Survey #103, from which point an old rock mound at the southwest corner of the H. J. Dorrah Survey #103 and the northwest corner of the Charles Wilcox Survey #36 bears S 29° 37' W 634.7 varas, at Mile Post # 9 / 1661.0 varas crossing a creek, in all 1900.8 varas set Mile Post #10;

From Mile Post #10 continuing S 50° 29' E, at Mile Post #10 / 1082.8 varas intersecting the east line of the H. J. Dorrah Survey #103 and the west line of the H. J. Dorrah Survey #16, from which point an old rock mound in the south line of the Mary J. Hunter Survey #94, for a corner of the H. J. Dorrah Survey #16, and the most easterly northeast corner of the H. J. Dorrah Survey #103 bears N 29° 29' E 50.3 varas, in all 1900.8 varas set Mile Post #11;

From Mile Post #11 continuing S 50° 29' E, at Mile Post #11 / 607.0 varas set a concrete monument on the west side of the Fitzhugh Road, marked Travis and Hays, at Mile Post #11 / 1663.1 varas to a point and from which point a bolt and rock mound at the northwest corner of the Herman Benson Survey #139, being also a corner of the John Bolinger Survey #140 bears S 0° 39' E 366.25 varas, in all 1900.8 varas set Mile Post #12;

From Mile Post #12 continuing S 50° 29' E, at Mile Post #12 / 775.3 varas set a concrete monument at the intersection of the east side of the Fitzhugh-Cedar Valley Road marked Travis and Hays, at Mile Post #12 / 1044.0 varas crossing Barton Creek, at Mile Post #12 / 1231.7 varas set a concrete monument at the intersection of the west line of the Fitzhugh-Cedar Valley Road, said concrete monument marked Travis and Hays, in all 1900.8 varas set Mile Post #13;

From Mile Post #13 continuing S 50° 29' E, at Mile Post #13 / 803.1 varas set a concrete monument at the intersection of the west line of the Fitzhugh-Cedar Valley Road, said monument marked Travis and Hays, at Mile Post #13 / 1475.6 varas intersecting the east line of the N. Johnson Survey #623 and a west line of the S. F. I. W. Co. Survey #2, from which point an iron stake set in an old rock mound at the northeast corner of the N. Johnson Survey #623 and the southeast corner of the J. J. Hyatt Survey bears N 0° 41' W 293.2 varas, in all 1900.8 varas set Mile Post #14;

From Mile Post #14 continuing S 50° 29' E, at Mile Post #14 / 557.4 varas intersecting the east line of the S. F. I. W. Co. Survey #4, from which point the most easterly southeast corner of the said S. F. I. W. Company Survey #4 bears S 29° 19' W 29.4 varas, and an iron stake set in an old rock mound at the original southwest corner of the Mrs. Susannah Holland Survey #545 bears N 29° 19' E 29.7 varas, at Mile Post #14 / 1294.0 varas crossing Long Branch, in all 1900.8 varas set Mile Post #15;

From Mile Post #15 continuing S 50° 29' E, at Mile Post #15 / 1463.2 varas set a concrete monument on the southeast side of the Austin-Fredericksburg Road, also known as U. S. Highway #290 marked Travis and Hays, in all 1900.8 varas set Mile Post #16;

From Mile Post #16 continuing S 50° 29' E, at Mile Post #16 / 986.2 varas intersecting the south line of the W. S. Holton Survey #57 and the north line of the Richard Hailey Survey #35, from which point an old rock mound at the original northwest corner of the Richard Hailey Survey #35 and the northeast corner of the F. Willie Survey #72, in the south line of the W. S. Holton Survey #57 as identified by its original bearing tree a 16" Live Oak marked x bears S 85° 00' W 9.0 varas, said old rock mound bears S 88° 50' W 749.9 varas, in all 1900.8 varas set Mile Post #17;

From Mile Post #17 continuing S 50° 29' E 1900.8 varas set Mile Post #18;

From Mile Post #18 continuing S 50° 29' E, at Mile Post #18 / 260.0 varas crossing Bear Creek, at Mile Post #18 / 1775.8 varas set a concrete monument on the east line of the Austin-Driftwood Road, also known as Farm to Market Road #1826, said monument marked Travis and Hays, in all 1900.8 varas set Mile Post #19;

From Mile Post #19 continuing S 50° 29' E 1900.8 varas set Mile Post #20;

From Mile Post #20 continuing S 50° 29' E, at Mile Post #20 \angle 1567.0 varas crossing Bear Creek, in all 1900.8 varas set Mile Post #21;

From Mile Post #21 continuing S 50° 29' E, at Mile Post #21 \angle 1302.7 varas crossing the east line of the J. E. Crawford Survey #26 and the west line of the John G. McGeehee Survey #6, in all 1900.8 varas set Mile Post #22;

From Mile Post #22 continuing S 50° 29' E, at Mile Post #22 \angle 1034.8 varas set a concrete monument in the south line of Bear Creek Road, said monument marked Travis and Hays, in all 1900.8 varas set Mile Post #23;

From Mile Post #23 continuing S 50° 29' E, at Mile Post #23 \angle 296.0 varas set a concrete monument at the intersection of the west line of Bear Creek Road, said monument marked Travis and Hays, at Mile Post #23 \angle 1110.7 varas set a concrete monument on the north line of Bear Creek Road, said concrete monument marked Travis and Hays, at Mile Post #23 \angle 1454.1 varas set a concrete monument on the north line of Bear Creek Road, said concrete monument being marked Travis and Hays, in all 1900.8 varas set Mile Post #24;

From Mile Post #24 continuing S 50° 29' E, at Mile Post #24 \angle 807.8 varas set a concrete monument on the northwest side of Birkner Road, from Buda to Manchaca, said monument marked Travis and Hays, at Mile Post #24 \angle 1306.0 varas crossing Little Bear Creek, in all 1900.8 varas set Mile Post #25;

From Mile Post #25 continuing S 50° 29' E, crossing Bear Creek twice, in all 1900.8 varas set Mile Post #26;

From Mile Post #26 continuing S 50° 29' E, crossing Little Onion Creek, at Mile Post #26 \angle 700.1 varas crossing the center line of the Missouri Pacific Lines and the I. & G. N. RR. in all 1900.8 varas set Mile Post #27;

From Mile Post #27 continuing S 50° 29' E, at Mile Post #27 \angle 589.0 varas crossing Onion Creek, at Mile Post #27 \angle 1385.8 varas set a concrete monument on the southeast line of the old Post Road, said monument marked Travis and Hays, at Mile Post #27 \angle 1701.2 varas set a concrete monument on the southeast side of U. S. Highway #81, from Austin to San Antonio, said monument marked Travis and Hays, in all 1900.8 varas set Mile Post #28;

From Mile Post #28 continuing S 50° 29' E, at Mile Post #28 \angle 653.3 varas set a concrete monument on the south line of Turnerville Road, said concrete monument being marked Travis and Hays, in all 1900.8 varas set Mile Post #29;

From Mile Post #29 continuing S 50° 29' E 1900.8 varas set Mile Post #30;

From Mile Post #30 continuing S 50° 29' E, at Mile Post #30 \angle 725.7 varas, more or less, crossing the center line of the South Turnerville Road, which is also the east line of the William Porter Survey #6 and the west line of the William P. Corbin Survey #7, and from which point the southeast corner of the William Porter Survey #6 and the southwest corner of the William P. Corbin Survey #7 bears S 1° 21' E 1870.0 varas, more or less, at Mile Post # 30 \angle 734.5 varas set a concrete monument on the east line of the South Turnerville Road, said concrete monument marked Travis and Hays, in all 1900.8 varas set Mile Post #31;

From Mile Post #31 continuing S 50° 29' E 1900.8 varas set Mile Post #32;

From Mile Post #32 continuing S 50° 29' E, at Mile Post #32 \angle 1329.0 varas set a concrete monument on the west side of Yeager Hill Road, said concrete monument being marked Travis and Hays, said monument being also near the west line of the Sarah Gainer Survey #7, and the east line of the William P. Corbin Survey #7, in all 1900.8 varas set Mile Post #33;

From Mile Post #33 continuing S 50° 29' E 1900.8 varas set
Mile Post #34;

From Mile Post #34 continuing S 50° 29' E, at Mile Post
#34 / 743.3 varas set a concrete monument on the west side of
Upchurch Road, said monument marked Travis and Hays, in all
1900.8 varas set Mile Post #35;

From Mile Post #35 continuing S 50° 29' E 1900.8 varas set
Mile Post #36;

From Mile Post #36 continuing S 50° 29' E 67.2 varas to a
concrete monument 12" at the top, 24" at the base and approximately
2½ feet in height, with a bronze plate set in the top, at the
intersection of the DeWitt Colony Line, with the southeast line
of the old San Antonio-Nacogdoches Road previous to the year
1932, for the common corner of Travis and Hays Counties, Texas,
in the northwest line of Caldwell County, Texas, as agreed
upon by the County Commissioners' Courts of Hays and Travis
Counties, Texas.

That I, T. A. Breeze, County Surveyor of Hays County, Texas,
and I, Marlton O. Metcalfe, County Surveyor of Travis County, Texas,
do each hereby certify that the said survey was actually made
upon the ground by us, and according to law; that the limits,
boundaries and corners, with the marks, both natural and artificial,
are truly described in the foregoing plat and field notes as we set and
found them on the ground.

Certified to this 20 day of January A. D. 1955.

T. A. Breeze
T. A. Breeze
County Surveyor of Hays County, Texas

Marlton O. Metcalfe
Marlton O. Metcalfe
County Surveyor of Travis County, Texas

THE STATE OF TEXAS |
COUNTY OF TRAVIS |

I, EMILIE LIMBERG, Clerk of the County Courts of Travis County, Texas, do hereby certify that the foregoing pages contain a true and correct copy of the following papers, to-wit.

1. Field Notes County Line between Hays & Travis Counties

Vol. 2 Page 389

~~in Cause No.~~ _____, _____

as the same appear on file in my office and of record (Book and page as shown above) Commissioners'^{Court} Minutes of the County Court of Travis County, Texas.

WITNESS my hand and seal of office on this the 13 day of May, A. D., 19 55.

EMILIE LIMBERG
Clerk, County Courts,
Travis County, Texas,

By A. Gillespie
Deputy



11

Travis Co B-1-g Line 6

RECEIVED

MAY 17 1955

GENERAL LAND OFFICE

copy 59444

D-25

DATE 5/16 1955

HON. J. EARL RUDDER
LAND COMMISSIONER

DEAR SIR:

ATTACHED IS \$ _____ DOLLARS

CASH FEES
CHECK TO COVER INTEREST ON THE FOLLOWING:
DRAFT RENTAL

1 Copy of Travis - Hays
County Line

1 Copy of Sketch of
Grid Co. Line

YES

RECEIVED

MAY 17 1955

GENERAL LAND OFFICE

④

RECEIPT
PLEASE MAIL COPIES TO MR.
STATEMENT

From
Commissioner's Court

STREET Travis Co.

CITY Austin

ORDER BY Jef

STREET _____

CITY _____

Travis Co Bdry Line 6

June 20, 1955

Honorable County Judge
Hays County
San Marcos, Texas

Dear Sir:

Relative to the county boundary line between Travis and Hays Counties recently completed by Messrs Metcalfe and Breeze, it is necessary that the field notes and map be recorded by the County Clerk in both counties.

We have been furnished a certified copy of the map and field notes and a certificate showing that these have been filed of record in the County Court of Travis County. It is necessary that we have an affidavit set out that these instruments have been filed of record in the County Court of Hays County, giving the Book Number, Page and Date of recording.

Sincerely yours,

EARL RUDDER, COMMISSIONER

BY:

William Shirriffs
Engineering Department

WS:mlc

Travis Co Bdty Line 6

route 59446

HAYS AND TRAVIS COUNTY LINE

SURVEY BY:
 T.A. BREEZE
 County Surveyor, Hays Co.

MARLTON O. METCALFE
 County Surveyor, Travis Co.

BY ORDER OF THE COMMISSIONERS COURTS

HAYS COUNTY	TRAVIS COUNTY
C.M. Decker Eugene Easley A. Spence Hekaf Robert Saunders Virgil G. Carr	County Judges Tom E. Johnson Arthur D. Swenson N. L. Gault Robert E. Barker A. L. Bothe
Comm. Prec. # 1	Comm. Prec. # 2
Comm. Prec. # 3	Comm. Prec. # 4

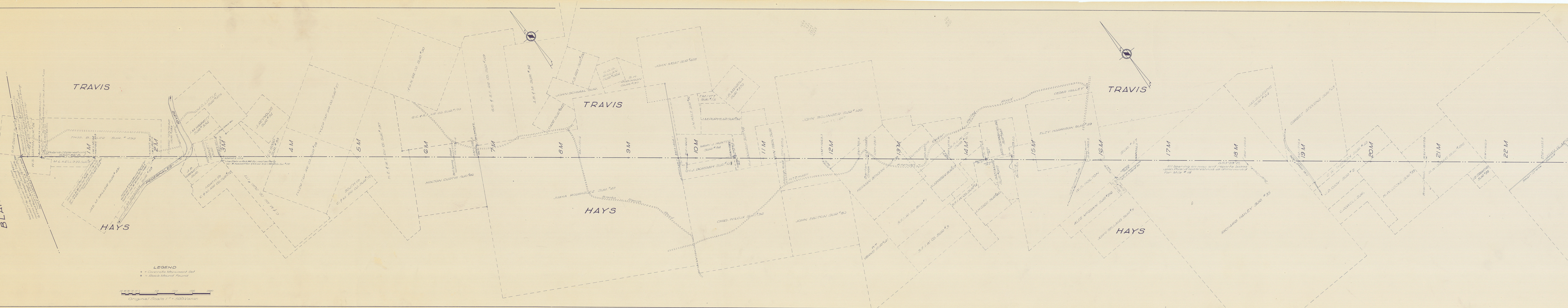
All bearings on map and reports based upon 23.9100 observations as determined for Mile # 19, S40°29'1"E.

THE STATE OF TEXAS
COUNTY OF HAYS AND TRAVIS

That T. A. Breeze, County Surveyor, Hays County, Texas, and Marilton O. Metcalfe, County Surveyor, Travis County, Texas, do hereby certify that the foregoing survey was made by us on the ground, and according to law, that the limits, boundaries and corners, with the marks, both natural and artificial, are truly described in the foregoing report as we found them on the ground. Certified to this 10th day of December 1954.

T.A. Breeze
 T.A. Breeze
 County Surveyor, Hays Co., Texas.

Marilton O. Metcalfe
 Marilton O. Metcalfe
 County Surveyor, Travis Co., Texas.



LEGEND
 • = Concrete Monument Set
 ○ = Rock Mound Foundation

Original Scale 1" = 500' Vertical

